

美国《工程索引》(EI Compendex) 收录期刊

CODEN JDXGAH



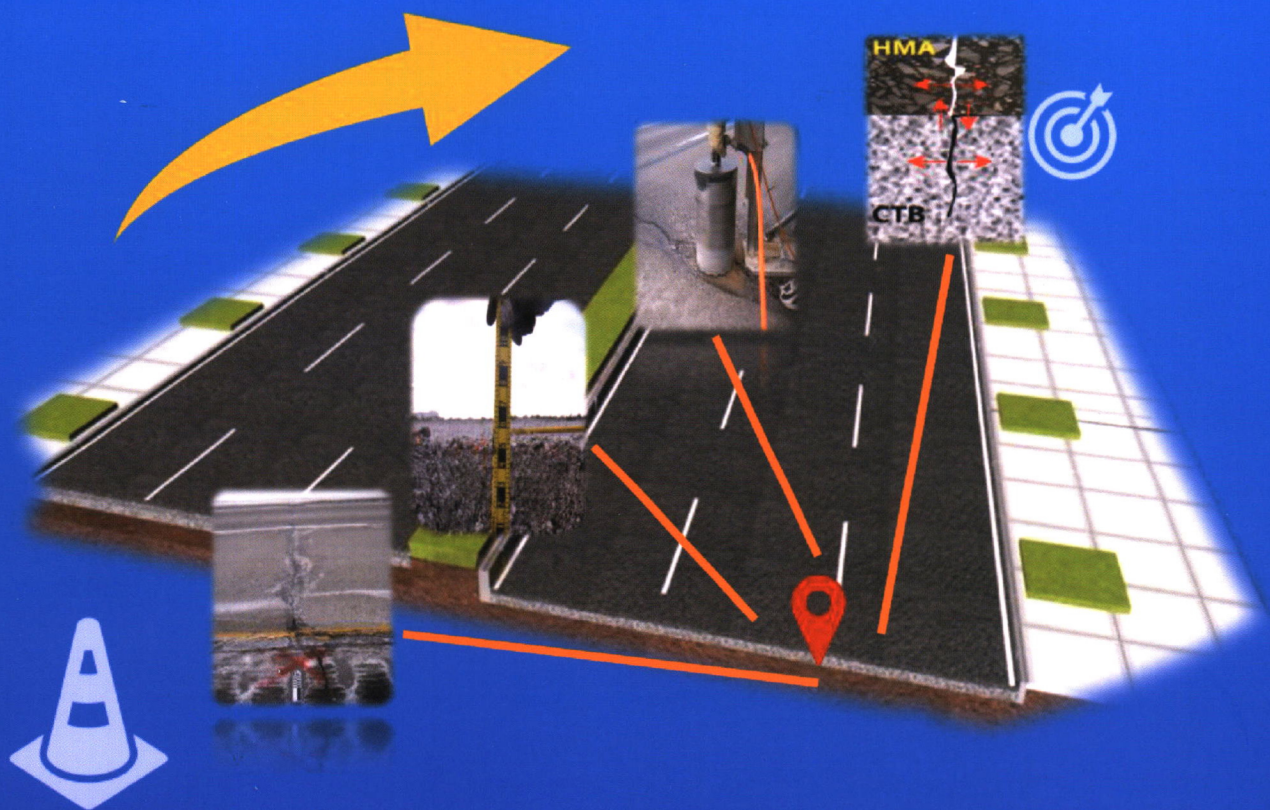
CN 22-1341/T



# 吉林大学学报

## 工学版

Journal of Jilin University  
Engineering and Technology Edition



**封面文章** | 张阳, 王傲鹏, 张靖霖, 马涛, 陈思宇  
水泥稳定碎石材料干燥收缩研究综述



万方数据

2  
2023

第53卷 第2期  
Vol.53 No.2

中国·长春  
Changchun, China

# 吉林大学学报(工学版)

第 53 卷 第 2 期

2023 年 2 月

## 目 次

### 综述

- 水泥稳定碎石材料干燥收缩研究综述 ..... 张 阳, 王傲鹏, 张靖霖, 等 (297)
- 配电网拓扑辨识研究综述及展望 ..... 王 果, 郭文凯, 王长春 (312)
- 可控电抗器研究综述及展望 ..... 田铭兴, 王田戈, 张慧英, 等 (328)

### 车辆工程·机械工程

- 单双搭接接头经高温老化后的失效对比 ..... 王登峰, 陈宏利, 那景新, 等 (346)
- 基于主成分分析阈值选取的挖掘机主泵载荷谱外推 ..... 陈晋市, 张森森, 王普长, 等 (355)
- 一类多刚性限幅振动系统的动态稳定性分析 ..... 杨 艳, 侍玉青, 张晓蓉, 等 (364)

### 材料科学与工程

- 氮掺杂  $\text{Co}/\text{Co}_3\text{O}_4/\text{C}$  核壳纳米粒子作为锂电池负极材料的性能  
..... 魏素凤, 平 昕, 李春霖, 等 (376)

### 交通运输工程·土木工程

- 基于模糊双边界网络模型的道路运输效率评价 ..... 王占中, 蒋 婷, 张景海 (385)
- 城市轨道交通网络韧性评估及恢复策略 ..... 马 敏, 胡大伟, 舒 兰, 等 (396)
- 考虑智能网联车队强度的混合交通流基本图模型 ..... 罗瑞发, 郝慧君, 徐桃让, 等 (405)
- 电动载货三轮车风险行为及影响因素分析 ..... 贺 宜, 孙昌鑫, 彭建华, 等 (413)
- 考虑清空时间的双向队首绿波协调控制数解算法 ..... 卢 凯, 徐广辉, 叶志宏, 等 (421)
- 基于循环神经网络的城市轨道交通短时客流预测 ..... 张惠臻, 高正凯, 李建强, 等 (430)
- 城市轨道交通站点吸引范围及强度建模 ..... 王 菁, 万 峰, 董春娇, 等 (439)
- 考虑柔性车道设置的公交优先信号设计 ..... 李 津, 孙雨彤, 魏小忠, 等 (448)
- 基于 MIMIC 与机器学习的出租车驾驶员交通事故诱因分析  
..... 潘恒彦, 张文会, 梁婷婷, 等 (457)
- 考虑时变交通拥堵的纯电动物流车路径规划模型 ..... 孙宝凤, 姚天姿, 陈雨琦 (468)
- 基于改进 Jaya 算法的双资源约束柔性作业车间调度 ..... 郭 鹏, 赵文超, 雷 坤 (480)
- 基于 Timoshenko 梁理论的钢-混组合梁动力折减系数 ..... 孙琪凯, 张 楠, 刘 潇, 等 (488)
- 高压脉冲放电破碎混凝土梁试验 ..... 王晓东, 李宁静, 李 强 (496)
- 预制预装修模块化建筑连接节点抗震性能 ..... 闫清峰, 张纪刚, 王 涛, 等 (505)
- 曲线桥梁车桥耦合振动数值分析方法 ..... 韩智强, 谢 刚, 周勇军, 等 (515)
- 电热型融雪沥青路面传热特性研究 ..... 刘状壮, 张有为, 季鹏宇, 等 (523)

- 基于力学响应分析方法的导电橡胶复合路面铺装技术……………魏海斌, 马子鹏, 毕海鹏, 等 (531)
- 栓钉剪力连接件力学性能分析……………匡亚川, 陈立斌, 李超举, 等 (538)

### 计算机科学与技术

- 基于集合阻塞的不确定系统中传感器选择方法……………欧阳丹彤, 孙 睿, 田新亮, 等 (547)
- 基于多源大数据分析的图像特征智能识别模型……………樊 敏, 宋世军 (555)
- 基于CEEMDAN理论的堆积层滑坡位移区间预测模型及仿真……………吴 剑, 许 斌 (562)
- 基于物体语义栅格地图的语义拓扑地图构建方法……………祁贤雨, 王 巍, 王 琳, 等 (569)
- 用于脑组织分割的多尺度注意网络……………刘近贞, 高国辉, 熊 慧 (576)
- 基于残差网络的弯道增强车道线检测方法……………时小虎, 吴佳琦, 吴春国, 等 (584)

### 通信与控制工程

- 基于混沌麻雀搜索算法的TDOA/FDOA定位 ……………国 强, 朱国会, 李万臣 (593)

# Journal of Jilin University (Engineering and Technology Edition)

Vol. 53 No. 2

Feb. 2023

## Contents

- Dry shrinkage in cement-stabilized macadam: a review  
.....ZHANG Yang, WANG Ao-peng, ZHANG Jing-lin, et al. (297)
- Overview and prospect of distribution network topology identification  
.....WANG Guo, GUO Wen-kai, WANG Chang-chun(312)
- Overview and prospect of controllable reactor  
.....TIAN Ming-xing, WANG Tian-ge, ZHANG Hui-ying, et al. (328)
- Failure comparison of single and double lap joints after high temperature aging  
.....WANG Deng-feng, CHEN Hong-li, NA Jing-xin, et al. (346)
- Extrapolation of excavator main pump load spectrum based on threshold selection for principal component analysis  
.....CHEN Jin-shi, ZHANG Miao-miao, WANG Pu-chang, et al. (355)
- Dynamic stability analysis of a amplitude-limited vibration system with multiple rigid constraints  
.....YANG Yan, SHI Yu-qing, ZHANG Xiao-rong, et al. (364)
- N-doped Co/Co<sub>3</sub>O<sub>4</sub>@C core-shell nanoparticles as anode materials for lithium-ion batteries  
.....WEI Su-feng, PING Xin, LI Chun-lin, et al. (376)
- Evaluation of road transportation efficiency based on fuzzy double frontiers network model  
.....WANG Zhan-zhong, JIANG Ting, ZHANG Jing-hai(385)
- Resilience assessment and recovery strategy on urban rail transit network  
.....MA Min, HU Da-wei, SHU Lan, et al. (396)
- Fundamental diagram model of mixed traffic flow of connected and automated vehicles considering vehicles degradations and platooning intensity  
.....LUO Rui-fa, HAO Hui-jun, XU Tao-rang, et al. (405)
- Risk behaviors and influencing factors of cargo electric tricycles  
.....HE Yi, SUN Chang-xin, PENG Jian-hua, et al. (413)
- Algebraic method of bidirectional green wave coordination control for the head of the platoon considering the clearance time  
.....LU Kai, XU Guang-hui, YE Zhi-hong, et al. (421)
- Short-term passenger flow forecasting of urban rail transit based on recurrent neural network  
.....ZHANG Hui-zhen, GAO Zheng-kai, LI Jian-qiang, et al. (430)
- Modelling on catchment area and attraction intensity of urban rail transit stations  
.....WANG Jing, WAN Feng, DONG Chun-jiao, et al. (439)
- Design of bus priority signal considering flexible lane setting  
.....LI Jin, SUN Yu-tong, WEI Xiao-zhong, et al. (448)
- Inducement analysis of taxi drivers' traffic accidents based on MIMIC and machine learning  
.....PAN Heng-yan, ZHANG Wen-hui, LIANG Ting-ting, et al. (457)
- Electric delivery vehicle routing problem optimization model with time-varying traffic congestion  
.....SUN Bao-feng, YAO Tian-zi, CHEN Yu-qi(468)
- Dual-resource constrained flexible job shop optimal scheduling based on an improved Jaya algorithm  
.....GUO Peng, ZHAO Wen-chao, LEI Kun(480)

- Dynamic reduction coefficients of steel-concrete composite beam based on Timoshenko beam theory  
.....SUN Qi-kai, ZHANG Nan, LIU Xiao, et al. (488)
- Experimental on crushing of concrete beams by high-voltage pulse discharge  
.....WANG Xiao-dong, LI Ning-jing, LI Qiang(496)
- Seismic performance of connection joints between prefabricated prefinished volumetric construction  
.....YAN Qing-feng, ZHANG Ji-gang, WANG Tao, et al. (505)
- Numerical analysis method of vehicle-bridge coupling vibration of curved bridge  
.....HAN Zhi-qiang, XIE Gang, ZHOU Yong-jun, et al. (515)
- Study on heat transfer characteristics of electric heating snow melting asphalt pavement  
.....LIU Zhuang-zhuang, ZHANG You-wei, JI Peng-yu, et al. (523)
- Conductive rubber composite pavement paving technology based on mechanical response analysis method  
.....WEI Hai-bin, MA Zi-peng, BI Hai-peng, et al. (531)
- Analysis of mechanical properties of stud shear connectors  
.....KUANG Ya-chuan, CHEN Li-bin, LI Chao-ju, et al. (538)
- Set blocking-based approach to sensor selection in uncertain systems  
.....OU-YANG Dan-tong, SUN Rui, TIAN Xin-liang, et al. (547)
- Intelligent recognition model of image features based on multi-source big data analysis  
.....FAN Min, SONG Shi-jun(555)
- Displacement interval prediction model and simulation of accumulation landslide based on ceemdan theory  
.....WU Jian, XU Bin(562)
- Semantic topological map building with object semantic grid map  
.....QI Xian-yu, WANG Wei, WANG Lin, et al. (569)
- Multi-scale attention network for brain tissue segmentation  
.....Liu Jin-Zhen, Gao Guo-Hui, Xiong Hui(576)
- Residual network based curve enhanced lane detection method  
.....SHI Xiao-hu, WU Jia-qi, WU Chun-guo, et al. (584)
- TDOA/FDOA localization based on chaotic sparrow search algorithm  
.....GUO Qiang, ZHU Guo-hui, LI Wan-chen(593)

- ☆《中文核心期刊要目总览》收录期刊
- ☆中国科学引文数据库(CSCD)核心期刊
- ☆中国科技核心期刊
- ☆《科技期刊世界影响力指数(WJCI)报告》收录期刊(Q1区)
- ★美国《工程索引》(EI Compendex)收录期刊
- ★美国《化学文摘》(CA)收录期刊
- ★俄罗斯《文摘杂志》(AJ)收录期刊
- ★美国《剑桥科学文摘》(CSA)收录期刊
- ☆中国知网收录期刊
- ☆中国科技论文在线收录期刊
- ☆《中国学术期刊文摘》等国内十多种文摘收录期刊

# 吉林大学学报(工学版)

JILIN DAXUE XUEBAO (GONGXUE BAN)

JOURNAL OF JILIN UNIVERSITY  
(Engineering and Technology Edition)

月刊 1957年创刊

Monthly, Started in 1957

第53卷 第2期(总第232期) 2023年2月

Vol. 53 No.2 (Sum 232) Feb. 2023

主管单位: 中华人民共和国教育部

Responsible Institution Ministry of Education, the  
People's Republic of China

主办单位: 吉林大学

Sponsored by Jilin University

主 编: 任露泉

Editor-in-Chief Ren Lu-quan

执行主编: 张祥合

Executive Editor-in-Chief Zhang Xiang-he

编辑出版:《吉林大学学报(工学版)》编辑部  
(长春市人民大街5988号 130022)

Edited and Published by Editorial Board of Journal of  
Jilin University(Engineering and Technology Edition)

电话: 0431-85095297

(5988 Renmin Street, Changchun 130022, China)

电子邮箱: xbgxb@jlu.edu.cn

Tel: 86-0431-85095297

网址: <http://xuebao.jlu.edu.cn/gxb>

E-mail: xbgxb@jlu.edu.cn

Website: <http://xuebao.jlu.edu.cn/gxb>

印 刷: 吉林省保隆冠彩印刷有限公司

Printed by Jilin Baolong Guancai Printing Co.,Ltd.

发行范围: 公开发行

Issue Scope Public Issue

国内发行: 中国邮政集团有限公司吉林省报刊发行分公司

Domestic Distributor Distribution Company for Newspaper and  
Journals of Jilin Province

国外发行: 中国国际图书贸易集团有限公司

Overseas Distributor China International Book Trading Corporation  
(P.O.Box 399 Beijing 100048, China)

(北京399信箱, 邮编100048)

中国标准连续出版物号 ISSN 1671-5497  
CN 22-1341/T

发行代号 国内 12-46  
国际 BM4549

国内定价 60.00元/册  
720.00元/年

