

美国《工程索引》(EI Compendex) 收录期刊

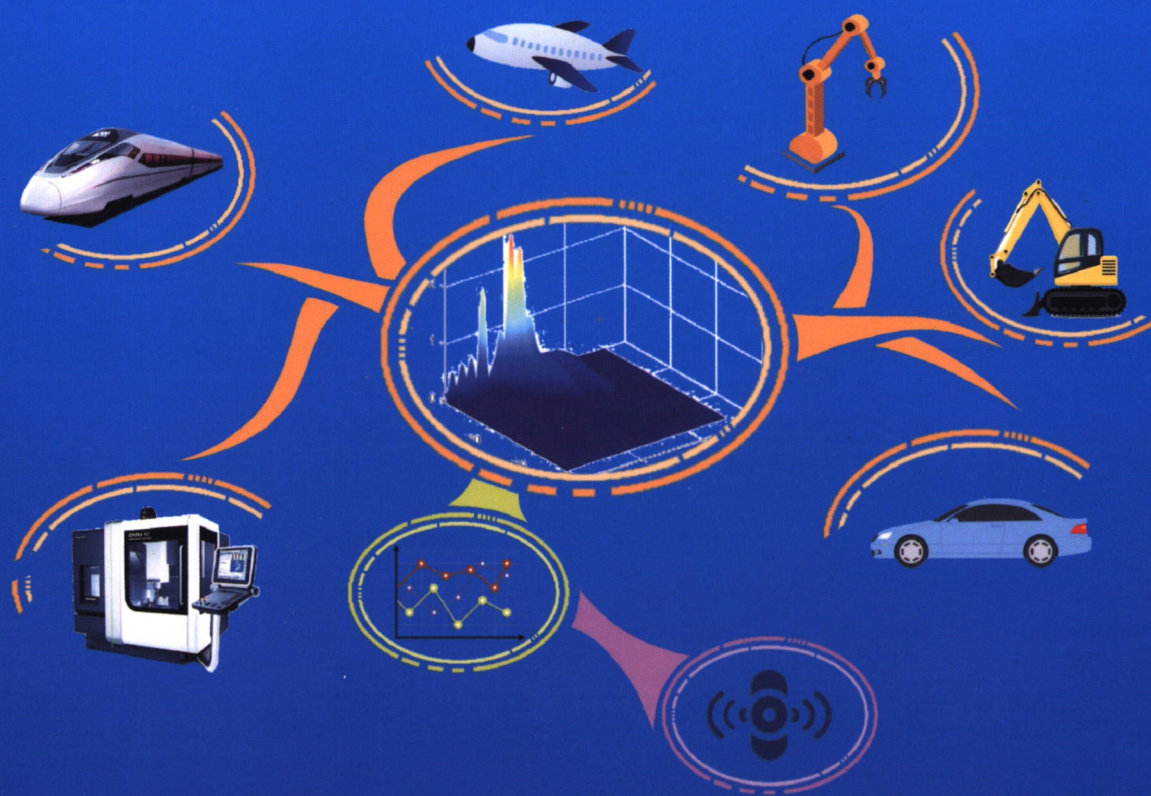
CODEN JDXGAH



吉林大学学报

工学版

Journal of Jilin University
Engineering and Technology Edition



封面
文章

于立娟, 安 阳, 何佳龙, 李国发, 王升旭
机电装备载荷谱外推技术研究进展及发展趋势



万方数据

4
2023

第53卷 第4期
Vol.53 No.4
中国·长春
Changchun, China

吉林大学学报(工学版)

第 53 卷 第 4 期

2023 年 4 月

目 次

综述

机电装备载荷谱外推技术研究进展及发展趋势于立娟, 安 阳, 何佳龙, 等 (941)

车辆工程·机械工程

高原状态下甲醇替代率对柴油机燃烧与排放的影响王 建, 于 威, 王 斌 (954)

板簧式弹性金属车轮胎面弹片结构优化金敬福, 董新桔, 贾志成, 等 (964)

嵌入控制油腔的静压主轴轴心运动主动控制分析与试验陈淑江, 徐春望, 路长厚, 等 (973)

吸能与压溃位移约束下的轨道车辆前端结构抗撞性优化李本怀, 刘艳文, 王 璐, 等 (982)

基于粒子群优化算法-长短时记忆模型的刀具磨损预测方法吴 飞, 农皓业, 马晨浩 (989)

空冷中冷器百叶窗翅片结构参数优化李 胜, 朱 佳, 黄德惠, 等 (998)

基于 NSGA-II 的斜齿轮宏观参数多目标优化杨红波, 史文库, 陈志勇, 等 (1007)

交通运输工程·土木工程

基于 V2I 通信的交叉口车辆碰撞预警方法赵 睿, 李 云, 胡宏宇, 等 (1019)

定位噪声统计特性未知的变分贝叶斯协同目标跟踪陈小波, 陈 玲 (1030)

基于共享单车骑行轨迹的骑行质量识别方法胡 莹, 邵春福, 王书灵, 等 (1040)

考虑能量消耗的纯电动物流车柔性时间窗路径规划问题孙宝凤, 刘娇娇, 姚天姿, 等 (1047)

商品车多式联运联盟成员选择及利益分配贾洪飞, 徐英俊, 杨丽丽, 等 (1060)

交通需求估计下的检测器布局 and 手机数据扩样推断孙 超, 尹浩为, 汤文蕴, 等 (1070)

基于鲁棒优化的不确定需求下应急物资配送多目标决策模型龙海波, 杨家其, 尹 靓, 等 (1078)

车联网环境下考虑遵从程度的混合流量逐日均衡常玉林, 徐文倩, 孙 超, 等 (1085)

基于数字图像相关技术的钢筋混凝土梁裂缝试验熊二刚, 巩忠文, 罗佳明, 等 (1094)

双柱式高墩桥梁整体稳定性的实用算法兰树伟, 周东华, 陈 旭, 等 (1105)

干湿循环与交变荷载作用下混凝土硫酸盐侵蚀损伤关博文, 邱文锦, 王发平, 等 (1112)

温缩作用下双层连续配筋混凝土路面配筋率设计参数对比分析

.....杨 帆, 李琛琛, 李 盛, 等 (1122)

回热对低温大质流密度实验系统能耗影响徐振军, 张瑞凤, 陈嘉祥, 等 (1133)

计算机科学与技术

基于自监督学习的单目图像深度估计算法白 琳, 刘林军, 李轩昂, 等 (1139)

基于分割方法的繁体中文报纸文本检测姜 宇, 潘家锋, 陈何淮, 等 (1146)

基于多尺度特征的行人重识别属性提取新方法	于 鹏, 朴 燕	(1155)
基于部分最大可满足性问题的动态系统中最小故障检测隔离集求解方法	欧阳丹彤, 孙 睿, 田新亮, 等	(1163)
基于模糊近似度的隐私敏感数据过滤算法	方朝剑, 胡新荣	(1174)
基于谱聚类的不确定数据集中快速离群点挖掘算法	康耀龙, 冯丽露, 张景安, 等	(1181)
通信与控制工程		
基于猫群算法的震动感知周界安防系统	周求湛, 冀泽宇, 王 聪, 等	(1187)
多属性融合分布式光纤导水裂隙带高度预测方法	冀汶莉, 田 忠, 柴 敬, 等	(1200)
基于多模态自注意力网络的视频记忆度预测	吕 卫, 韩稼泽, 褚晶辉, 等	(1211)
农业工程·仿生工程		
残膜捡拾打包机的设计与试验	张学军, 黄 爽, 史增录, 等	(1220)
鲜食玉米仿生摘穗装置设计与试验	朱光强, 李天宇, 周福君, 等	(1231)
基于灌溉引水渠介质的膜秆分离装置设计与试验	陈 永, 陈学庚, 何浩猛, 等	(1245)

Journal of Jilin University (Engineering and Technology Edition)

Vol. 53 No. 4

Apr. 2023

Contents

Research progress and development trend of extrapolation method in electromechanical equipment load spectrum	YU Li-juan, AN Yang, HE Jia-long, et al. (941)
Effects of methanol substitution percent on combustion and emission of diesel engines under plateau condition	WANG Jian, YU Wei, WANG Bin(954)
Optimization of the tread plate-spring structure of flexible metal wheel with plate-spring	JIN Jing-fu, DONG Xin-ju, JIA Zhi-cheng, et al. (964)
Analysis and experiment of active motion control of hydrostatic spindle embedded with control recess	CHEN Shu-jiang, XU Chun-wang, LU Chang-hou, et al. (973)
Crashworthiness optimization for frontal-end structure of rail vehicle constrained with absorbed energy and crushed displacements	LI Ben-huai, LIU Yan-wen, WANG Lu, et al. (982)
Tool wear prediction method based on particle swarm optimizationlong and short time memory model	WU Fei, NONG Hao-ye, MA Chen-hao(989)
Structural parameters optimization of louver fins of air-cooled charge air cooler	LI Sheng, ZHU Jia, HUANG De-hui, et al. (998)
Multi-objective optimization of macro parameters of helical gear based on NSGA- II	YANG Hong-bo, SHI Wen-ku, CHEN Zhi-yong, et al. (1007)
Vehicle collision warning method at intersection based on V2I communication	ZHAO Rui, LI Yun, HU Hong-yu, et al. (1019)
Variational Bayesian cooperative target tracking with unknown localization noise statistics	CHEN Xiao-bo, CHEN Ling(1030)
Identification of road riding quality based on shared bike trajectory data	HU Ying, SHAO Chun-fu, WANG Shu-ling, et al. (1040)
Electric delivery vehicle routing problem with flexible time window integrated with energy consumption estimation	SUN Bao-feng, LIU Jiao-jiao, YAO Tian-zi, et al. (1047)
League member selection and benefit distribution of commercial vehicles multi-modal transportation	JIA Hong-fei, XU Ying-jun, YANG Li-li, et al. (1060)
Sensor deployment strategy and expansion inference of mobile phone data for traffic demand estimation	SUN Chao, YIN Hao-wei, TANG Wen-yun, et al. (1070)
Multi-objective decision-making on emergency material distribution under uncertain demand based on robust optimization	LONG Hai-bo, YANG Jia-qi, YIN Liang, et al. (1078)
Day-to-day equilibrium of hybrid traffic considering obedience degree under internet of vehicles environment	CHANG Yu-lin, XU Wen-qian, SUN Chao, et al. (1085)
Experiment on cracks in reinforced concrete beams based on digital image correlation technology	XIONG Er-gang, GONG Zhong-wen, LUO Jia-ming, et al. (1094)
Practical calculation method for the critical bearing capacity of double column bridge with high piers	LAN Shu-wei, ZHOU Dong-hua, CHEN Xu, et al. (1105)
Damage of concrete subjected to sulfate corrosion under dry-wet cycles and alternating loads	GUAN Bo-wen, DI Wen-jin, WANG Fa-ping, et al. (1112)
Numerical simulation of continuously reinforced concrete pavement with double-layer reinforcement under effect of	

- temperature shrinkageYANG Fan,LI Chen-chen,LI Sheng, et al. (1122)
- Influence for backheating on low temperature high mass experimental system
.....XU Zhen-jun,ZHANG Rui-feng, CHEN Jia-xiang, et al. (1133)
- Depth estimation algorithm of monocular image based on self-supervised learning
.....BAI Lin,LIU Lin-jun,LI Xuan-ang, et al. (1139)
- Segmentation-based detector for traditional Chinese newspaper
.....JIANG Yu,PAN Jia-zheng, CHEN He-huai, et al. (1146)
- New method for extracting person re-identification attributes based on multi-scale features
.....YU Peng,PIAO Yan(1155)
- Approach for generating minimal fault detectability and isolability set in dynamic system based on partial maximum
satisfiability problemOUYANG Dan-tong,SUN Rui,TIAN Xin-liang, et al. (1163)
- Privacy-sensitive data filtering algorithm based on fuzzy approximationFANG Chao-jian,HU Xin-rong(1174)
- Fast outlier mining algorithm in uncertain data set based on spectral clustering
.....KANG Yao-long,FENG Li-lu,ZHANG Jing-an, et al. (1181)
- Seismic sensing perimeter security system based on cat swarm algorithm
.....ZHOU Qiu-zhan,JI Ze-yu,WANG Cong, et al. (1187)
- Prediction of water-flowing height in fractured zone based on distributed optical fiber and multi-attribute fusion
.....JI Wen-li,TIAN Zhong,CHAI Jing, et al. (1200)
- Multi-modal self-attention network for video memorability prediction
.....LYU Wei,HAN Jia-ze,CHU Jing-hui, et al. (1211)
- Design and test of the remaining film picking and baling machine
.....ZHANG Xue-jun,HUANG Shuang,SHI Zeng-lu, et al. (1220)
- Design and experiment of bionic ear picking device for fresh corn
.....ZHU Guang-qiang,LI Tian-yu,ZHOU Fu-jun, et al. (1231)
- Design and experiment of separation device of plastic film and cotton stalks based on irrigation diversion channel media
.....CHEN Yong,CHEN Xue-geng,HE Hao-meng, et al. (1245)

- ☆ 《中文核心期刊要目总览》收录期刊
- ☆ 中国科学引文数据库 (CSCD) 核心期刊
- ☆ 中国科技核心期刊
- ☆ 《科技期刊世界影响力指数 (WJCI) 报告》收录期刊 (Q1区)
- ★ 美国《工程索引》(EI Compendex) 收录期刊
- ★ 美国《化学文摘》(CA) 收录期刊
- ★ 俄罗斯《文摘杂志》(AJ) 收录期刊
- ★ 美国《剑桥科学文摘》(CSA) 收录期刊
- ☆ 中国知网收录期刊
- ☆ 中国科技论文在线收录期刊
- ☆ 《中国学术期刊文摘》等国内十多种文摘收录期刊

吉林大学学报 (工学版)

JILIN DAXUE XUEBAO (GONGXUE BAN)

JOURNAL OF JILIN UNIVERSITY
(Engineering and Technology Edition)

月刊 1957年创刊

Monthly, Started in 1957

第53卷 第4期 (总第234期) 2023年4月

Vol. 53 No.4 (Sum 234) Apr. 2023

主管单位: 中华人民共和国教育部

Responsible Institution Ministry of Education, the
People's Republic of China

主办单位: 吉林大学

Sponsored by Jilin University

主 编: 任露泉

Editor-in-Chief Ren Lu-quan

执行主编: 张祥合

Executive Editor-in-Chief Zhang Xiang-he

编辑出版: 《吉林大学学报(工学版)》编辑部
(长春市人民大街5988号 130022)

Edited and Published by Editorial Board of Journal of
Jilin University(Engineering and Technology Edition)
(5988 Renmin Street, Changchun 130022, China)

电话: 0431-85095297

Tel: 86-0431-85095297

电子邮箱: xbgxb@jlu.edu.cn

E-mail: xbgxb@jlu.edu.cn

网址: <http://xuebao.jlu.edu.cn/gxb>

Website: <http://xuebao.jlu.edu.cn/gxb>

印 刷: 吉林省保隆冠彩印刷有限公司

Printed by Jilin Baolong Guancai Printing Co.,Ltd.

发行范围: 公开发行

Issue Scope Public Issue

国内发行: 中国邮政集团有限公司吉林省报刊发行分公司

Domestic Distributor Distribution Company for Newspaper and
Journals of Jilin Province

国外发行: 中国国际图书贸易集团有限公司

Overseas Distributor China International Book Trading Corporation
(P.O.Box 399 Beijing 100048, China)

(北京399信箱, 邮编100048)

中国标准连续出版物号 ISSN 1671-5497
CN 22-1341/T

发行代号 国内 12-46
国际 BM4549

国内定价 60.00元/册
720.00元/年

