

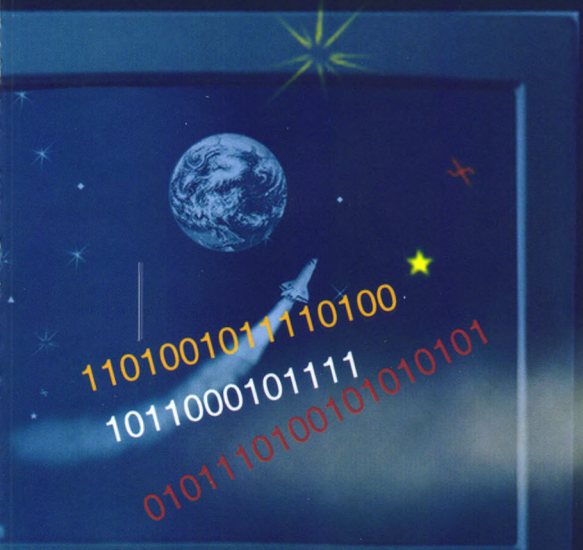


中文核心期刊
中国计算机用户协会会刊

ISSN 1006-9348

计算机仿真

COMPUTER SIMULATION



12
2015

ISSN 1006-9348



万方数据

目次

第十届中国系统建模与仿真技术高层论坛开幕词	何秋茹(I)
第十届中国系统建模与仿真技术高层论坛闭幕词	韩力群(II)
军事领域仿真	
基于网络空间作战防御威胁态势评估研究	李宗育,王劲松,李大亮(1)
潜艇报警鱼雷制导方式的模式识别方法	郑文恩,刘剑,肖明彦(6)
线导鱼雷模拟器尾流自导弹道建模设计	叶慧娟,王鹏,毛向辉(10)
波浪相位对航行体出水姿态影响数值仿真研究	刘可,潘文良,李智生(15)
夜视环境下的雷达遥感图像的小特征分割仿真	唐昌华,庄庆华(22)
航空航天领域仿真	
一种飞机地面集中除冰的新型优化调度方法	吴孟丽,于梦飞,周蕊,李世伟(26)
飞艇DC-DC配电器供电系统优化设计	宋青,李兆杰(30)
基于抖动激光陀螺频域特征的信号优化方法	李瑞,陆志东,岳亚洲,周琪(36)
动态飞行模拟器停机运动控制方法	胡荣华(41)
基于优先级的卫星终端双队列缓存管理算法	别玉霞,杨超,刘海燕(46)
无尾桨直升机航向操纵系统气动特性分析	陈晨,李凤鸣,陈志超(51)
无人机对地自主攻击方法仿真与研究	徐敏云,王洁,罗畅,谭诗利(55)
基于扩展目标的航空器轨迹冲突探测方法	李波睿,周音,彭茜,慕春棣(60)
基于神经网络的机翼气动参数预测仿真研究	刘昕(67)
关于航空器异常数据检测仿真研究	姜滨,杨杰明(72)
能源领域仿真	
串联超级电容组的能效均衡优化控制	李桂丹,彭亮,李华,邵鹏(76)
双馈风机的两种负荷频率控制方法分析与比较	周蓉,陈雯,谭文(81)
基于滑模变结构双馈风力发电机直接功率控制	王君瑞,彭飘飘,刘凡齐(85)
过热汽温串级控制系统IMC PID参数整定	胡文斌,陈庆辉,孙明,刘森(89)
微电网建模及并网控制的优化过程仿真	程海军,鲁宝春,姜丕杰(94)
交通体系与工具仿真	
电动轮汽车悬架的匹配与分析	郭浩敏,陈勇(98)
关于混合动力汽车节能减排优化控制研究	凌滨,马梅(102)
电动汽车电机双闭环差速控制策略研究	王丰元,谢宪毅,何建勇,徐巧妮(107)
多信息融合车辆行驶状态估计方法研究	李宁,李刚,解瑞春,袁航(113)
基于车前脸HOG特征的车辆识别方法研究与实现	张红兵,李海林,黄晓婷,马守磊(119)
基于停站运营的地铁车厢温度场影响数值分析	姜亚欣,尧辉明(124)
电动汽车PMSM滑模变结构控制	刘庆华,吕永健,阳杰(129)
雨天雾气干扰下的车牌图像识别技术仿真	张晓娟(133)
信息仿真	
巷道无线信道相干带宽及其影响因素的研究	成凌飞,高鹏飞,王利超(137)
基于多线程和缓存机制的定时器管理算法	倪桂强,陈志龙,姜劲松,马遥(142)
相控阵天线辐射电磁场空间分布研究与仿真	吴博,刘鹏远,张智慧(146)
关于海上通信多径衰落的仿真研究	史经展,宗鹏(152)
微博虚假信息传播模型的仿真研究	魏德志,陈福集,郑小雪(158)
社交网络通信目标检测优化仿真研究	封红旗,沈田予,杨长春(164)
基于高阻抗表面的小型化微带天线的特性分析	曹芳铭,王素玲,王志军(168)
制造业仿真	
盾构机多小齿轮和大齿轮传动动力学仿真分析	文桂林,魏复超,卿启湘,刘杰(172)
薄膜节流器对静压导轨工作性能的影响	胡均平,兰文军,李科军,刘成沛(177)
仿真应用研究	
起重机车轮运行稳定性控制仿真研究	王卫辉,晁苏全,魏云平,赵辉(183)
高速大惯性液压伺服系统高精度控制研究	周开,李维嘉(187)
基于噪声函数的随机风场作用的动态布料研究	赖秋凤,侯进(192)
基础振动下蓄能器动态特性研究	姜东身,杨忠炯,周立强,袁宏亮(197)
建筑施工中钢框架晃动下抗震性数学建模分析	郭汉东(202)
三维图像运动特征配准方法研究与仿真	黄秀花(206)
基于流固耦合的通信用单管塔抗风仿真研究	杜文嫒,张朋波,高永强,张研(210)

仿真方法与算法

- 基于粒计算和模拟退火的 K-medoids 聚类算法 蒋 君,徐蔚鸿,潘 楚(214)
一种差分进化和模拟退火粒子群混合算法 杜 松,周健勇(218)
基于任务和用户属性的工作流任务分配算法 姜劲松,杨 波,缪志敏,朱宝山(222)
保结构及无源性的 H_2 模型降阶方法 徐康丽,杨志霞,蒋耀林(226)
移动增强现实三维注册中特征提取算法改进 王文润,王阳萍(231)
粒子群算法中粒子轨迹特性研究 韩 璞,孟 丽,王 彪,王东风(235)

仿真系统

- 励磁装置在线测试数字仿真系统的研究 李志军,李成龙,张俊良(241)

仿真网络化

- 无线传感复杂网络拓扑控制研究 王传云,尹 燕(246)
基于物联网的危重病人体征监测报警方法研究 丁慧洁(251)
海量非线性网络流量数据分类模型的仿真分析 刘 彤(255)
网络增广链的最优路径选择模型仿真分析 詹 雯(259)
物联网自治区域内的网络路径规划建模研究 郑富娥,程 钢(263)
一种易于更新的室内导航路网构建方法 徐战亚,钟赛尚,王媛媛(267)
复杂网络数据流的入侵数据检测方法仿真 王翠娥,李香林,崔冬华(272)
关于物联网环境下能量损耗优化调度建模仿真 刘明利,刘 洋(276)
基于半群结构的网络通信加密方法仿真 李 凤,张勇飞(280)
传感器数据定位测距算法优化仿真与研究 程 钢,郑富娥(284)
基于节点状态演变及能量约束的延迟容忍网络 陈慧英(287)
基于服务质量的 LTE-A 无线资源管理算法 王 端,魏雪峰,薛 凡(292)

仿真智能化

- 一种交互式多机器人复杂系统仿真方法研究 马 礼,蒯 亮,杨银刚(298)
滑模控制在桥式起重机运动控制中的应用研究 张金星,杜文正,谢 政,吴 鹏(303)
海绵膜复卷机收卷系统建模及张力控制 朱 好,郭永洪(307)
关于发动机点火提前角优化控制研究与仿真 冯辉宗,杨 广,袁荣棣,谢闵君(312)
两种多体机器人高速避障控制研究 卓 娜,高 岩,刘 磊(318)
基于人耳听觉特性的语音识别预处理研究 张 毅,黎小松,罗 元,吴承军(322)
关于建筑物图像提取优化仿真研究 刘 博,徐丽华,卢盛昌(327)
基于船舶中舵操纵稳定性优化控制研究 魏登明,李海艳(332)
桥式起重机定位及防摆的最优迭代控制 付子义,袁海国(337)
IMS 离线计费系统自适应均衡负载算法的研究 王青松,马瑞萍,李 爽(341)
深海五功能电动机械手误差建模与仿真 范云龙,张奇峰,张竺英(345)
仿人机器人眼部运动准确控制与实现 信继忠,柯显信,杨 阳,尚宇峰(349)
基于组合模型的极端降水预测方法 王 寻,万定生,唐 娟(354)
大系统理论在变风量空调系统中的应用 杨世忠,任庆昌(360)
地质勘探中海量杂波数据优化检测 司红伟,刘 伦(364)
直流电机跟踪误差时变约束控制 陈丽君,姚建勇,杨贵超(368)
基于优化混沌 PWM 激励序列的超声测距系统 王 俊,白 云,高育鹏,彭 程(373)
基于改进蚁群算法高速采集图像模糊区域分割 蒋伟杰(377)
篮球运动员过度训练对肘膝关节损伤建模仿真 彭发胜(382)
多小波包框架下 EMD-CIIT 去噪方法研究 王唯嘉,肖明清,张 磊,陈茂才(386)
弱关联 web 数据分类方法优化研究与仿真 邵海军(392)
云数据融合过程的优化方法研究与仿真 狄 婧(396)
大气 PM_{2.5} 污染指数预测优化模型仿真分析 李 嵩,王 冀,张丹闯,夏 葳(400)
三维多媒体视觉图像运动行为仿真研究 金 晖(404)
基于神经网络的磁流变阻尼器逆向模型辨识研究 要会娟,浮 洁,张丽香(408)
IMC 的优化设计及其在热工系统中的应用研究 马晓兰,韩 璞,胡 艳,孙宇笛(413)
智能家居中的串联网络优化控制模型仿真 张 琰,龚义建,李道清(416)

仿真服务化

- 重型燃气轮机天然气供应系统建模及仿真 孟 成,刘 伟,忻建华(420)
基于可控调节的半导体调光照明研究与仿真 何小利,宋 钰(425)
大型无线网络入侵安全风险等级评估 钱 扬,张金波,吴一阳(430)
大型数据库中的最优数据查询图的设计与仿真 常琳林(434)
密集人流区域的合理化调度数学建模仿真 高菲菲(438)
海量短文本实时挖掘方法的研究与仿真 朱贺军,马 丁(442)
异常网络环境下云计算资源需求预测模型仿真 兰长明,李昆仑,熊 婷(447)
人体运动姿态图像矫正识别仿真研究 冷纪岚(451)
关于旅游消费者购买指数预测建模仿真研究 龙映宏,李布明(455)

CONTENTS

Modeling Cyberspace Defence Combat Situation Assessment by Using Fuzzy Dynamic Bayesian Network	LI Zong - yu, WANG Jin - song, et, al (1)
Discriminance of Submarine Alarm Torpedo Guidance Way Based on Pattern Recognition	ZHENG Wen - en, LIU Jian, et, al (6)
Design of Wake Homing Trajectory Model for Wire - guided Torpedo	YE Hui - juan, WANG Peng, et, al (10)
Research on Gesture of Vehicle Exiting from Different Phase Position of Wave by Numerical Simulation Method	LIU Ke, PAN Wen - liang, et, al (15)
Small Feature Segmentation Simulation of Radar Remote Sensing Images under Night Vision Environment	TANG Chang - hua, ZHUANG Qing - hua (22)
A New Optimal Scheduling Method of Ground Centralized Aircraft De - icing Process	WU Meng - li, YU Meng - fei, et, al (26)
Optimization Design of DC - DC Distributors Power Supply System Used in Airships	SONG Qing, LI Zhao - jie (30)
A Signal Optimization Method Based on Frequency Domain Characteristics of Dithered Laser Gyro	LI Rui, LU Zhi - dong, et, al (36)
Shutdown Movement Control for Dynamic Flight Simulator	HU Rong - hua (41)
Satellite Terminal Dual Queue Buffer Management Algorithm Based on Priority	BIE Yu - xia, YANG Chao, et, al (46)
Aerodynamic Analysis of Cross Section of Tail Boom for NOTOR	CHEN chen, LI Feng - ming, et, al (51)
Research on UCAV Attacking Manner Against Ground Moving Targets	XU Qi - yun, WANG Jie, et, al (55)
Aircraft Trajectory Conflict Detection Method Based on Extended Object	LI Bo - rui, ZHOU Yin, et, al (60)
Simulation of Airfoil Plunging Aerodynamic Parameter Prediction Based on Neural Network	LIU Xin (67)
Aircraft Abnormal Data Mining Method Based on Fuzzy Closer Algorithm	JIANG Bin, YANG Jie - ming (72)
Optimal Control of Equalization Circuit for Ultra - Capacitors	LI Gui - dan, PENG Liang, et, al (76)
Comparison of Two Frequency Control Strategies by DFigs	ZHOU Rong, CHEN Wen, et, al (81)
Direct Power Control for Doubly Fed Induction Generator Based on Sliding Mode Variable	WANG Jun - rui, PENG Piao - piao, et, al (85)
Tuning of PID Arguments for Superheated Steam Temperature Cascade Control System Based on IMC Theory	HU Wen - bin, CHEN Qing - hui, et, al (89)
Micro Power Grid Modeling and the Optimization Process of the Grid Control Simulation	CHENG Hai - jun, LU Bao - chun, et, al (94)
Simulation and Matching of Suspension of an Electric Vehicle with Hub - Motors	GUO Hao - min, CHEN Yong (98)
Study on Optimization Control of HEV Energy Conservation and Emission Reduction	LING Bin, MA Mei (102)
Electric Vehicle Motor Double Closed Loop Speed Control Strategy of Difference	WANG Feng - yuan, XIE Xian - yi, et, al (107)
Study on Vehicle Driving State Estimation Based on Multiple Information Fusion	LI Ning, LI Gang, et, al (113)
Research and Implementation of Vehicle - Type Recognition Method Based on HOG Features of Vehicle Frontal Face	ZHANG Hong - bing, LI Hai - ling, et, al (119)
Numerical Analysis of the Effect to Temperature Field Base on Stop Operation in Metro Vehicle Carriage	JIANG Ya - xin, YAO Hui - ming (124)
Sliding Mode Variable Structure Control of Electric Vehicles PMSM	LIU Qing - hua, LV Yong - jian, et, al (129)
Simulation of License Plate Image Recognition Technology under Fog Interference in Rainy Day	ZHANG Xiao - juan (133)
A Study of Coherence Bandwidth of Wireless Channel and its Influencing Factors in Tunnel	CHENG Ling - fei, GAO Peng - fei, et, al (137)
Timer Management Algorithm Based on Multithreading and Cache Mechanism	NI Gui - qiang, CHEN Zhi - long, et, al (142)
Research and Simulation about Distribution of Electromagnetic Field Beamed by Phased Array Antenna	WU bo, LIU Peng - yuan, et, al (146)
Simulation Research on Multipath Fading of Maritime Communication	SHI Jing - zhan, ZONG Peng (152)
Simulation Research on Propagation Model of Micro - Blog False Information	WEI De - zhi, CHEN Fu - ji, et, al (158)
Simulation of Mining Method for Special Objects in Social Networks	FENG Hong - qi, SHEN Tian - yu, et, al (164)
Radiation Characteristics of Miniaturized Microstrip Patch Antennas Embedded in the High Impedance Surface	CAO Fang - ming, WANG Su - ling, et, al (168)
Dynamic Simulation of Multiple Active Pinions and Gear Transmission System of Shield Tunneling Machine	WEN Gui - lin, WEI Fu - chao, et, al (172)
Influence of Membrane Restrictor on Performance of Hydrostatic Slid	HU Jun - ping, LAN Wen - jun, et, al (177)
Simulation of Stability Control of Crane Wheel Running	WANG Wei - hui, CHAO Su - quan, et, al (183)
Research on High - Precision Control for Hydraulic Servo System with High Speed and Large Inertia	ZHOU Kai, LI Wei - jia (187)
Research on Dynamic Effect of Cloth in Random Wind Field Based on Noise Function	LAI Qiu - feng, HOU Jin (192)
Research on Dynamic Characteristics of Accumulator under Conditions of Foundation Vibration	JIANG Dong - shen, YANG Zhong - jiong, et, al (197)
Mathematical Modeling Analysis of Earthquake Resistance for Steel Framework Shaking in Construction	GUO Han - dong (202)
Research and Simulation of Non - Rigid Registration Method for Three - Dimensional Image Movement Process	HUANG Xiu - hua (206)
Single Pipe Communication Tower Wind - Resistance Analysis Based on FSI	DU Wen - man, ZHANG Peng - bo, et, al (210)
Improved K - medoids Clustering Algorithm Based on Many Factors	JIANG Jun, XU Wei - hong, et, al (214)

Hybrid Algorithm of Differential Evolution and Simulated Annealing Particle Swarm Optimization	DU Song,ZHOU Jian - yong (218)
A Workflow Task Assignment Method based on the Properties of Task and User	JIANG Jin - song, YANG Bo, et, al (222)
Structure - Preserving and Passivity - Preserving H ₂ Model Order Reduction Method	XU Kang - li, YANG Zhi - xia, et, al (226)
An Improved Feature Extraction Algorithm of 3d Registration in Mobile Augmented Reality	WANG Wen - run, WANG Yang - ping (231)
Characteristics of Particle Trajectory in Particle Swarm Optimization	HAN Pu, MENG Li, WANG Biao, et, al (235)
Research on Digital Simulation System of Online Test for Excitation Device	LI Zhi - jun, LI Cheng - long, et, al (241)
Research on Topology Control in Wireless Sensor Networks Based on Complex Network Theory	WANG Chuan - yun, YIN Yan (246)
Monitoring Alarm Method of Critical Ill Patient Vital Signs Based on Internet of Things	DING Hui - jie (251)
Simulation Analysis of Nonlinear Classification Model for Huge Amounts of Network Traffic Data	LIU Tong (255)
Simulation Analysis of Optimal Path Selection Model on Network Augmented Chain	ZHAN Wen (259)
IoT Autonomous Region Network Path Planning Modeling Study	ZHENG Fu - e, CHENG Gang (263)
Indoor Navigation Network Construction Method with Ability to Update Conveniently	XU Zhan - ya, ZHONG Sai - shang, et, al (267)
Complex Network Simulation Data Flow of Spatial Data Detection Method	WANG Cui - e, LI Xiang - lin, et, al (272)
Modeling and Simulation of Energy Loss Optimization Scheduling under Internet of Things	LIU Ming - li, LIU Yang (276)
Network communication encryption method based on the structure of semigroup simulation	LI Feng, ZHANG Yong - fei (280)
A Sensor Positioning Ranging Algorithm and Its Simulation	CHENG Gang, ZHENG Fu - e (284)
Delay Tolerant Network Based on Node State Evolution and Energy Confinement	CHEN Hui - ying (287)
QoS - Based Radio Resource Management Algorithm in LTE - A	WANG Duan, WEI Xue - feng, et, al (292)
Research on Simulation Method of Interactive Multi Robot in Complex System	MA Li, KUAI Liang, et, al (298)
Application of Feedback Linearization and Sliding Mode Control for 2D Overhead Crane	ZHANG Jin - xing, DU Wen - zheng, et, al (303)
Molding and Tension Control of Sponge Membrane Winding System	ZHU Hao, GUO Yong - hong (307)
GA - Based Fuzzy Optimal Control of Ignition Advance Angle	FENG Hui - zong, YANG Guang, et, al (312)
High Speed Obstacle Avoidance Control for Two Robots Stud	ZHUO Na, GAO Yan, et, al (318)
Pretreatment of Speech Recognition Based on Human Auditory Characteristics	ZHANG Yi, LI Xiao - song, et, al (322)
Simulation of Extraction and Optimization for Building Image	LIU Bo, XU Li - hua, et, al (327)
Optimization Control Research Based on Rudder Steering Stability	WEI Deng - ming, LI Hai - yan (332)
Position Tracking and Anti - Swing for Bridge Crane Based on Optimal Iterative Learning Control	FU Zi - yi, YUAN Hai - guo (337)
Self - Adaptive Load Balancing Algorithm Based on IMS Offline Billing System	WANG Qing - song, MA Rui - ping, et, al (341)
Error Modeling and Simulation of A Deep - Sea 5 - Function Electric Manipulator	FAN Yun - long, ZHANG Qi - feng, et, al (345)
Accurate Control and Realization of Humanoid Robot Eye Movement	XIN Ji - zhong, KE Xian - xin, et, al (349)
A Method for Prediction of Extreme Precipitation Based on Combined Model	WANG Xun, WAN Ding - sheng, et, al (354)
Application of Large Scale System Theory in Variable Air Volume Air Conditioning Systems	YANG Shi - zhong, REN Qing - chang (360)
Data Optimization Test of Huge Amounts of Clutter in Geological Exploration	SI Hong - wei, LIU Lun (364)
Tracking Error Time - Varying Constraint Control for DC Motors	CHEN Li - jun, YAO Jian - yong, et, al (368)
Ultrasonic Ranging System Based on Optimized Chaotic PWM Excitation Sequence	WANG Jun, BAI Yun, et, al (373)
Fuzzy Region Segmentation of High Speed Acquisition Images Based on Improved Ant Colony Algorithm	JIANG Wei - jie (377)
Basketball Player Overtraining Modeling and Simulation to Elbow Knee Joint Injury	PENG Fa - sheng (382)
Research on EMD - CIIT Denoising under Frame of Multiwavelet Packets	WANG Wei - jia, XIAO Ming - qing, et, al (386)
Optimization Research and Simulation of Weak Association Web Data Classification Method	SHAO Hai - jun (392)
Optimization Method and Simulation of Cloud Data Fusion Process	DI Jing (396)
Simulation Analysis of Prediction Optimization Model for Atmospheric PM2.5 Pollution Index	LI Song, WANG Ji, et, al (400)
Simulation of 3D Multimedia Visual Image Motion Behavior	JIN Hui (404)
Study of Inverse Model Identification for a Magneto - Rheological Damper Based on Neural Network	YAO Hui - juan, FU Jie, et, al (408)
Optimization Design of Internal Model Controller and its Application in Thermal System	MA Xiao - lan, HAN Pu, et, al (413)
Simulation of Optimal Control Model of Series Network in Smart Home	ZHANG Yan, GONG Yi - Jian, et, al (416)
Modeling and Performance Simulation of Gas Supply System in Gas Turbine Power Plants	MENG Cheng, LIU Wei, et, al (420)
Research and Simulation of Semiconductor Lighting Based on Controllable Regulation	HE Xiao - li, SONG Yu (425)
Intrusion Security Risk Assessment for Large Scale Wireless Networks	QIAN Yang, ZHANG Jin - bo, et, al (430)
Design and Simulation of Optimal Data Query Figure in Large Database	CHANG Lin - lin (434)
Modeling and Simulation of Reasonable Scheduling in Dense Traffic Area	GAO Fei - fei (438)
Research and Simulation of Real Time Mining Method for Massive Short Text	ZHU He - jun, MA Ding (442)
Model Simulation of Demand Prediction for Cloud Computing Resources under Abnormal Network Environment	LAN Chang - ming, LI Kun - lun, et, al (447)
Three Dimensional Motion Pattern Recognition Posture Correction	LENG Ji - lan (451)
Modeling and Simulation of Purchase Index Prediction for Tourism Consumers	LONG Ying - hong, LI Bu - ming (455)

叶舞纷飞 仿若

JANUARY

S	M	T	W	T	F	S
					1	2
3	4	5	6	7	8	9
10	11	12	13	14	15	16
17	18	19	20	21	22	23
24	25	26	27	28	29	30
31						

FEBRUARY

S	M	T	W	T	F	S
	1	2	3	4	5	6
7	8	9	10	11	12	13
14	15	16	17	18	19	20
21	22	23	24	25	26	27
28	29					

MARCH

S	M	T	W	T	F	S
	1	2	3	4	5	6
7	8	9	10	11	12	13
14	15	16	17	18	19	20
21	22	23	24	25	26	27
28	29	30	31			

APRIL

S	M	T	W	T	F	S
					1	2
3	4	5	6	7	8	9
10	11	12	13	14	15	16
17	18	19	20	21	22	23
24	25	26	27	28	29	30

MAY

S	M	T	W	T	F	S
	1	2	3	4	5	6
7	8	9	10	11	12	13
14	15	16	17	18	19	20
21	22	23	24	25	26	27
28	29	30	31			

JUNE

S	M	T	W	T	F	S
	1	2	3	4		
5	6	7	8	9	10	11
12	13	14	15	16	17	18
19	20	21	22	23	24	25
26	27	28	29	30		

JULY

S	M	T	W	T	F	S
					1	2
3	4	5	6	7	8	9
10	11	12	13	14	15	16
17	18	19	20	21	22	23
24	25	26	27	28	29	30
31						

AUGUST

S	M	T	W	T	F	S
	1	2	3	4	5	6
7	8	9	10	11	12	13
14	15	16	17	18	19	20
21	22	23	24	25	26	27
28	29	30	31			

SEPTEMBER

S	M	T	W	T	F	S
					1	2
3	4	5	6	7	8	9
10	11	12	13	14	15	16
17	18	19	20	21	22	23
24	25	26	27	28	29	30

OCTOBER

S	M	T	W	T	F	S
						1
2	3	4	5	6	7	8
9	10	11	12	13	14	15
16	17	18	19	20	21	22
23	24	25	26	27	28	29
30	31					

NOVEMBER

S	M	T	W	T	F	S
	1	2	3	4	5	6
7	8	9	10	11	12	13
14	15	16	17	18	19	20
21	22	23	24	25	26	27
28	29	30				

DECEMBER

S	M	T	W	T	F	S
					1	2
3	4	5	6	7	8	9
10	11	12	13	14	15	16
17	18	19	20	21	22	23
24	25	26	27	28	29	30
31						

CALENDAR 2016

联系电话：010-57793698

地址：北京市阜成路14号

邮政编码：100048

网址：www.compusimu.com