



QK2058513

CN 14-1154/11d

机械管理开发

MECHANICAL MANAGEMENT AND DEVELOPMENT

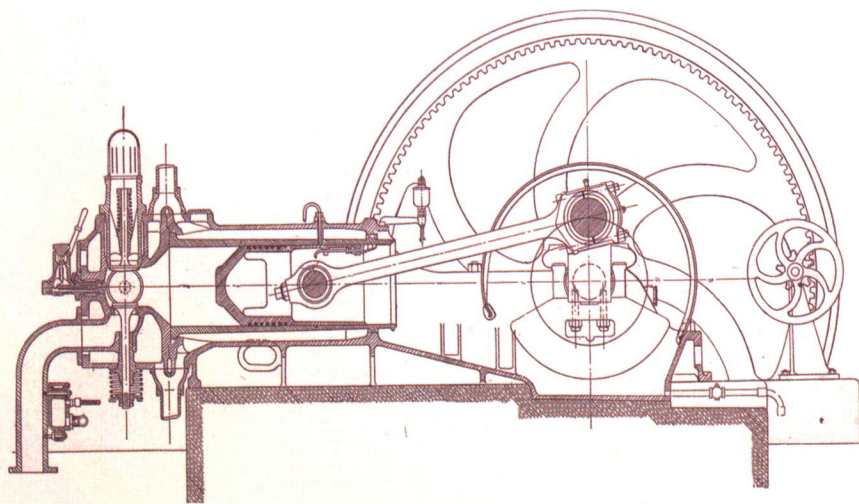
主管单位：山西省工业和信息化厅

编辑出版：山西经济和信息化出版传媒中心

山西省一级（优秀）期刊

2020年第**12**期

第35卷（卷终） 总第212期



- 中国核心期刊（遴选）数据库收录期刊
- 中国期刊全文数据库全文收录期刊
- 中国学术期刊网络出版总库全文收录期刊
- 中国学术期刊综合评价数据库来源期刊
- 中国学术期刊（光盘版）全文收录期刊
- 中文科技期刊数据库（维普网）收录期刊
- 万方数据—数字化期刊群全文上网期刊

ISSN 1003-773X



9 771003 773208

定价：人民币20元

万方数据

目 次

·设计理论与方法·

高原环境下矿用挖掘机的特殊设计	职 彦(1)
麻家梁矿 PF6/1542 型转载机中部槽优化设计布置研究及应用	胡亚芳(3)
带式输送机转载点降尘系统的研究与试验	范鹏伟(5)
皮带机布料臂架参数优化研究	王 琦(7)
矿用提升机垂悬钢丝绳回收装置设计研究	马晓锋(10)
选煤厂筛分装置的分析及优化设计	夏 扬(13)
关于煤矿井筒电热风机组及其控制系统的设计研究	王洪海(15)
自动浇花系统的设计	王志强(17)
卡轨车轨道运输方案设计及试验研究	张 冬(20)
张力自动平衡悬挂装置检测系统的分析与应用	张克军(22)
锚杆锚索联合支护的结构设计及数值模拟分析	杨 扬(24)
皮带输送机卷带装置的设计及试验	史晋岳(26)
综采工作面放顶煤液压支架设计	祖海军(28)
煤矿主通风机在线监控系统优化设计分析	范 进(31)
巷道锚杆支护参数的优化及对比研究	陈国华(33)
矿井通风机安全监测数据传输系统设计研究	霍晋保(35)
煤炭井下斜巷跑车防护装置的布置设计	翟政凯(38)
煤矿运输巷锚杆锚索联合支护技术的设计与应用	王晓波(39)
复合顶板支护设计方案	苑 杰(42)
交错式掘进超前支护装置安全互锁液控的设计与应用	王文胜,侯晓飞,马 隼,王璟耀(45)
矿井提升机载荷监测系统设计研究	杨瑞芳(47)

·机械分析与设计·

电子伺服压机在变速器轴承装配中的运用	张晓红(50)
汽车变速箱动力学仿真优化	李晓宁(52)
齿轮油对重卡变速器高低挡切换性能影响	刘 强(54)
矿用提升机天轮轮体结构分析与优化设计	何洪亮(56)
5.6 m 液压支架掩护梁静力学分析	崔拥军(59)
关于 B737NG 滑油滤旁通故障的分析	崔仁华(61)
巷道锚杆支护围岩加固体稳定性研究	张雪峰(64)
锚杆预应力对巷道支护效果的影响	耿志飞(66)
煤矿用防爆电梯闸瓦发热问题分析与改进	郭昊琛(68)
带式输送机故障及智能保护装置的应用分析	曹继东(71)
掘进机截割头振动机理研究及测试验证	王 永(73)
大采高液压支架的结构优化及安全性分析	韩海清(75)
一种皮带机机尾防堆煤装置的分析与应用	王 琴(78)
一种具有调节功能的皮带机运输装置的分析与应用	刘志伟(80)
基于多体动力学的复合振动筛的仿真分析	常园园(82)
磁选机不同磁场分布对磁选效果的影响模拟分析	刘学勤(84)
DTL120 型矿用带式输送机滚筒的结构性能研究	王 智(86)
基于 AMT 等加速控制的带式输送机启动特性研究	李鹏洲,张彦丽(88)
不同张紧方式下带式输送机的动态特性分析	秦 岩(91)
矿用自动气动挡车门的设置及应用	郭晋鹏,吴利学(93)
采煤机截线距对滚筒截割性能的影响	史虎平(95)
采煤机摇臂可靠性数值模拟研究	王志波(97)
一种智能化液压支架的分析与应用	王常军(99)

不同预应力下巷道支护效应的数值模拟分析	任学军(101)
一种巷道用皮带机尾浮煤清扫装置的分析与应用	贾海峰(103)
重型刮板输送机电机功率平衡控制技术研究	梁宝林,高大伟,李 军(105)
煤矿提升绞车新型制动装置研究	赵 鑫(108)
矿用通风机主轴的强度分析与改进优化研究	许佳庆(111)
SGZ800/800 型刮板输送机链轮的结构性能研究	张鹏举(114)
选煤用振动筛横梁断裂问题分析与改进	李永强(117)
采煤机断裂液压拉杆修复技术探析	杨 光(120)
一种煤矿供电电流保护装置的设计分析与应用	智焕梅(123)
·测试与诊断技术·	
带式输送机故障分析及安全诊断系统的设计研究	张丽娟(126)
提升机远程监测及异常诊断系统的研究	牛海兵(128)
基于智能诊断技术及虚拟仪器技术的某型桥故障诊断系统	王添禹,雷智强,郭 磊(130)
采煤机传动装置故障诊断系统的研究	卢闫满(134)
·实践与应用·	
高压水除鳞电气控制系统的优化措施	连瑞钢(137)
矿用刮板输送机刮板链 E 型螺栓失效分析与改进应用	王宇飞(140)
龙王沟煤矿 61605 综放工作面安装工艺研究	苏 愷(142)
巷道带式输送机变频自动张紧装置应用	刘建君(145)
煤矿供电变压器的改造	白玉静(147)
同煤集团 13 臂掘锚一体机的改造与应用	宋昊婷(149)
空气炮在解决料仓堵塞中的应用研究	郜 杰(152)
综合机械化采煤回采巷道布置及工艺参数设计	寇海萍(154)
液压自移式设备列车在综采工作面的应用	曹 立(156)
深部大巷破碎围岩注浆加固技术应用	解超超(158)
矿用带式输送机跑偏分析及纠偏装置应用	薛治东(160)
石膏石矿通风系统的安全性试验及措施	张晓芳(162)
综采工作面液压支架快速安装工艺应用	郁海超(164)
虎龙沟煤矿综放支架优化应用研究	冯建亮(166)
极软岩大断面切眼施工技术	白雪岩,李旭阳,伊冠松(168)
大采高液压支架快速安装技术在新景矿的应用	荆俊杰(170)
高压永磁电机及远程变频智能控制系统的应用	赵 亮(172)
岩巷快速掘进优化设计及应用	王晓明(175)
综采工作面自动化集控技术应用分析	张志文(177)
注浆锚索在综采工作面回采巷道超前支护中的应用	朱 峰(179)
DTL140/32/110 型煤矿用带式输送机控制系统技术改造及其应用效果	暴跃新(182)
选煤厂干扰床分选机的实践应用效果研究	田盼盼(184)
掘进机新型拖缆装置应用分析	李江飞(187)
煤巷掘进合理空顶距留设及施工优化	李小亮(189)
·自动化技术与设计·	
液晶面板组装工艺的研究与设计	王 芳(192)
采煤机自动调高系统的滑模控制研究	张志忠(194)
矿井无线瓦斯监控系统的设计与应用	汪圣良(197)
电站和变电站继电保护系统可靠性的优化方案	姚君峰(200)
智能化工作面系统可靠性研究	阎 伟(202)
变频节能技术在矿用带式运输机上的应用与研究	张冰峰,郑锁珍(204)

带式输送机监控系统研究	张子洋(206)
电池无轨胶轮车状态的实时数据监测系统研究	乔伟伟(208)
井下盘区泵房自动化排水系统的研究	赵 彤(210)
掘进机自动化功能的升级设计与应用	贺亚发(212)
关于 PLC 在选煤控制系统中的应用研究	王燕云(214)
选煤厂输送带巡检装置及其监控系统的设计	李新剑(216)
矿业企业矿井提升机电控系统设计方案的研究	栗中华(219)
关于晋煤集团寺河矿智能化工作面的研究分析	郭 凯(222)
矿井提升机电气节能控制系统的设计与应用	王建龙(225)
液压支架电液控制系统的设计与调试	李亚飞(227)
煤矿低压馈电开关智能保护技术研究	朱宏博(229)
煤矿主井皮带输送机在线监测系统研究	宋振海(231)
基于超宽带技术的掘进机自主定位定向方法研究	段笑蔚(234)
煤矿井下供电设备在线监测系统的研究	赵聪敏(236)
采煤机自动调高电气控制系统的设计及功能实现	吉嘉楠(238)
郭庄煤矿甲烷浓度监测系统的设计实现	李亚超(240)
智能化采煤工作面自动化技术应用研究	韦 瑜(242)
带式输送机智能控制系统的应用	张倩倩(244)
重介质选煤自动化控制系统的设计	张梦瑶(246)
带式输送机制动系统电气及液压控制系统的设计	原云锋(248)
选煤厂重介质分选过程悬浮液密度智能控制系统研究	张 平(250)
防爆无轨胶轮车安全保护系统的研究	孙知宇(253)
悬臂式掘进机巷道断面自动成形方案研究与应用	邢勇锋(256)
选煤厂煤泥压滤智能控制系统设计	韩 龙(259)
矿用多电机驱动刮板输送机功率平衡控制研究	吴佳佳(262)
关于 MG930-WD 采煤机智能调控系统的研究	康 贵(265)
EBZ260 型掘进机电控系统升级设计研究	宋若杰(268)
·专题与综述·	
降低锻造成本途径及效果探析	于 华(271)
斜巷运输机电设备现场安全管理	杨士伟(273)
矿井复杂煤层区域的综合防火技术分析	续云飞(275)
基于大数据的机动车环境污染检测系统的研究与应用	张 剑,黄旭哲(277)
视觉识别系统在岸桥自动化中的应用分析	许跃骞(279)
数控机床维修技术的探讨	叶忠立(282)
柴油机用于水面舰艇动力装置的技术特点及应用研究	伍赛特(284)
·经验交流·	
WK-35 挖掘机变频系统光纤触发故障分析	周 荣(288)
同煤集团挖金湾煤业移变绕组频繁烧损原因分析	徐 静(290)
矿井通风机维护及主要故障排除方法探究	周玉芹(292)
煤矿井下液压支架常见故障分析及预防措施	毛伟洪(294)
矿用隔爆开关整定及故障处理分析	阎振奇(296)
煤矿刮板输送机常见故障及改进措施研究	张少华(298)
煤矿风机房噪声治理研究	刘萃萃(300)
皮带输送机运输问题与效率优化的研究	卢 凯(302)

注:带★号的为基金资助论文

期刊基本参数: CN 14-1134/TH*1986*m*A4*303*zh*P*¥ 20.00*5000*129*2020-12

CONTENTS

Special Design of the Mine Excavator with the Altitude Environment	Zhi Yan(1)
Design and Application of Optimization Design and Layout of Middle Slot of PF6/1542 Transfer Machine in Majialiang Mine	Hu Yafang(3)
Study and Test of Dust Control System for Transfer Point of the Belt Conveyor	Fan Pengwei(5)
Study on the Optimization of the Parameters of the Distribution Arm of the Belt Conveyor	Wang Qi(7)
Design and Research of Recycle Device for Vertical Suspension Wire Rope of Mine Hoist	Ma Xiaofeng(10)
Analysis and Optimization Design of Screening Device in Coal Preparation Plant	Xia Yang(13)
Study on Design of Electric Hot Air Unit and Its Control System in Coal Mine	Wang Honghai(15)
Design on Automatic Watering System	Wang Zhiqiang(17)
Design and Test Study of Rail Transit Scheme for Car-rail Car	Zhang Dong(20)
Research and Application of Automatic Balance Suspension System for Wire Rope Tension	Zhang Kejun(22)
Structural Design and Numerical Simulation Analysis of Combined Bolt and Anchor Cable Support	Yang Yang(24)
Design and Test of Belt Coiling Device of Belt Conveyor	Shi Jinyue(26)
Design of Hydraulic Support for Caving Coal in Fully Mechanized Mining Face	Zu Haijun(28)
Optimization Analysis of On-line Monitoring System of Main Fan in Coal Mine	Fan Jin(30)
Optimization and Comparative Study of Bolt Support Parameters in Roadway	Chen Guohua(36)
Design and Research of Data Transmission System for Safety Monitoring of Mine Ventilator	Huo Jinbao(35)
A Brief Discussion on the Design of the Protection Device of the Roadster in Coal Underground Slanting Lane	Zhai Zhengkai(38)
Design and Application of Combined Bolt and Anchor Cable Support Technology in Coal Mine Transport Lane	Wang Xiaobo(39)
Design of Composite Roof Support	Yuan Jie(42)
Design and Application of Safety Interlocking Liquid Control for Staggered Tunneling Advance Support Device	Wang Wensheng, Hou Xiaofei, Ma Jun, Wang Jingyao(45)
Design and Research on Load Monitoring System of Mine Hoist	Yang Ruifang(47)
Application of Electronic Servo Press in Assembly of Transmission Bearing	Zhang Xiaohong(50)
Optimization of Dynamic Simulation of Automobile Gearbox	Li Xiaoning(52)
Influence of Gear oil on Shift Performance of Heavy Truck Transmission	Liu Qiang(54)
Structure Analysis and Optimization Design of the Pulley Body of the Hoist	He Hongliang(56)
5.6 m Static Analysis of Hydraulic Support Cover Beam	Cui Yongjun(59)
Analysis on Fault of B737NG Sliding Oil Filter	Cui Renhua(61)
Stability of Bolt-supported Rock Reinforcement in Roadway	Zhang Xuefeng(64)
Influence of Bolt Prestress on the Support Effect of Roadway	Geng Zhifei(66)
Analysis and Improvement of Heating Problem of Explosion-proof Elevator Brake Shoes Used in Coal Mine	Guo Haouchen(68)
Application Analysis of Faults and Intelligent Protection Device for Belt Conveyor	Cao Jidong(71)
Study on Vibration Mechanism of Cutting Head of Roadheader	Wang Yong(73)
Structural Optimization and Adaptability Analysis of Large Mining High Hydraulic Support	Han Haiqing(75)
Analysis and Application of a Belt Machine Tail Coal-proof Device	Wang Qin(78)
Analysis and Application of a Belt Transport Device with Adjusting Function	Liu Zhiwei(80)
Simulation Analysis of the Multi-Dynamic Composite Shaker	Chang Yuanyuan(82)
Analysis on the Effect of Different Magnetic Field Distribution of Magnetic Separator on Magnetic Separation Effect	Liu Xueqin(84)
A Study on the Structural Properties of DTL120 Type Belt Conveyor Roller	Wang Zhi(86)
A Study on Starting Characteristics of Belt Conveyors Based on AMT and Other Accelerated Control	Li Pengzhou, Zhang Yanli(88)
Dynamic Characteristics Analysis of Belt Conveyor under Different Tension	Qin Yan(91)
Setting and Application of Automatic Pneumatic Block Door for Mining	Guo Jinpeng, Wu Luxue(93)
Influence of Cut Line Distance of Shearer on Cutting Performance of Roller	Shi Huping(95)
Numerical Simulation of Rocker Arm Reliability of Shearer	Wang Zhibo(97)
Analysis and Application of an Intelligent Hydraulic Support	Wang Changjun(99)
Numerical Simulation Analysis of the Support Effect of Different Prestressed Roadways	Ren Xuejun(101)
Analysis and Application of a Coal Cleaning Device for Tailing of Belt Conveyor for Roadway	Jia Haifeng(103)
Research on Power Balance Control Technology of Heavy Duty Scraper Conveyor Motor	Liang Baolin, Gao Dawei, Li Jun(105)
On the New Type Brake Device for Coal Mine Lifting Winch	Zhao Xin(108)
Study on Strength Analysis and Improvement Optimization of Main Spindle of Mine Fan	Xu Jiaqing(111)
A Study on the Structure and Performance of SGZ800/800 Scraper Conveyor Sprocket	Zhang Pengju(113)
Analysis and Improvement of Beam Fracture of Vibrating Screen for Coal Preparation	Li Yongqiang(117)
Analysis on Repairing Technique of Break-up Hydraulic Pull Rod in Shearer	Yang Guang(120)
Analysis and Application of a Power Supply Current Protection Device in Coal Mine	Zhi Huanmei(123)
Fault Analysis and Safety Diagnosis System Design of Belt Conveyor	Zhang Lijuan(126)
Research on Remote Monitoring and Abnormal Judgment System of Hoist	Niu Haibing(128)
A Fault Diagnosis System Based on Intelligent Diagnosis Technology and Virtual Instrument Technology	Wang Tianyu, Lei Zhiqiang, Guo Lei(130)
Study on Fault Diagnosis System of Shearer Transmission Device	Lu Yanman(134)
Optimal Measures for Electric Control System of High Pressure Water Sealing	Lian Ruiqiang(137)
Failures and Optimization of E Bolts of Scraper Conveyor	Wang Yufei(140)
Installation Technology of 61605 Fully Mechanized Working Face in Longwanggou Coal Mine	Su Xing(142)
Application of Frequency Converter Automatic Tensioning Device for Belt Conveyor	Liu Jianjun(145)
Transformation of the Coal Mine Power Supply Transformer	Bai Yujing(147)
Reconstruction and Application of Arm-excavating Anchor Integrated Machine in Datong Coal Mine Group	Song Haoting(149)
Study on the Application of Air Gun in Solving Blockage of Silo	Gao Jie(152)

Layout and Process Parameter Design of Mining Roadway in Comprehensive Mechanized Coal Mining	Kou Haiping(154)
Application of Hydraulic Self-moving Equipment Train in Fully Mechanized Mining Face	Cao Li(156)
Application of Grouting Reinforcement Technology in Broken Surrounding Rock of Deep Roadway	Xie Chaochao(158)
Analysis and Application of Deviation Correction Device for Belt Conveyor	Xue Zhidong(160)
Safety Test and Strategy of Ventilation System in Shigaoshi Coal Mine	Zhang Xiaofang(162)
Rapid Installation Technology of Hydraulic Support in Fully Mechanized Mining Face	Yu Haichao(164)
Optimal Application of Fully Mechanized Support in Hulonggou Coal Mine	Feng Jianliang(166)
Construction Technology of Large Section Cut-hole in Soft Rock	Bai Xueyan, Li Xuyang, Yi Guansong(168)
Application of Rapid Installation Technology of Large Mining High Hydraulic Support in Xinjing Mine	Jing Junjie(170)
Application of High Voltage Permanent Magnet Motor and Remote Frequency Conversion Intelligent Control System	Zhao Liang(172)
Optimization Design and Application of Rapid Tunneling in Rock and Lane	Wang Xiaoming(175)
Application Analysis of Automatic Central Control Technology in Fully Mechanized Mining Face	Zhang Shiwen(177)
Application of Grouting Anchor Cable in Advance Support of Mining Roadway in Fully Mechanized Mining Face	Zhu Feng(179)
Analysis on Technical Transformation and Application Effect of Belt Conveyor Control System for DTL140/32/110 Coal Mine	Bao Yuexin(182)
Research on Practical Application Effect of Interference Bed Separator in Coal Preparation Plant	Tian Panpan(184)
Application of New Towing Cable Device in Roadheader	Li Jiangfei(187)
Reasonable Spacing of Empty Roof and Optimization of Construction in Coal Tunneling	Li Xiaoliang(189)
Research and Design of Liquid Crystal Panel Assembly Process	Wang Fang(192)
Study on Sliding Mode Control of Shearer Automatic Height Adjustment System	Zhang Zhizhong(194)
Design and Application of Wireless Gas Monitoring System	Wang Shengliang(197)
Research on Improving Reliability of Relay Protection System in Power Station and Substation	Yao Junfeng(200)
Research on Reliability of Intelligent Working Face System	Yan Wei(202)
Application and Research of Frequency Conversion Energy Saving Technology in Mine Belt Transport	Zhang Bingfeng, Zheng Suozhen(204)
Research on Monitoring System of the Belt Conveyor	Zhang Ziyang(206)
Research of Real-time Data Monitoring System for the Status of Railless Rubber Wheel in Contemporary Coal Mine	Qiao Weiwei(208)
Study on Automatic Drainage System of the Pump House in Underground Pan District	Zhao Tong(210)
Application and Design of Automatic Function Upgrading of the Roadheader	He Yafa(212)
Application of PLC in Coal Preparation Control System	Wang Yanyun(214)
Design of Inspection Device and Monitoring System of Conveyor Belt in Coal Preparation Plant	Li Xinjian(216)
Research on the Design Scheme of Mine hoist Electronic Control System in Mining Enterprises	Li Zhonghua(219)
Research and Analysis on Intelligent Chemical Workface in Sihe Mine of Jin Coal Group	Guo Kai(222)
Design and Application of Energy-saving Control System Mechanical and Electrical Gas in Mine Lift	Wang Jianlong(225)
Design and Adjustment of Hydraulic Support Electro-hydraulic Control System	Li Yafei(227)
Research on Intelligent Protection Technology of Low Voltage Feed Switch in Coal Mine	Zhu Hongbo(229)
Research on On-line Monitoring System of Main Well Belt Conveyor in Coal Mine	Song Zhenhai(231)
Research on Self-positioning Orientation Method of Roadheader Based on Ultra Wide Band Technology	Duan Xiaowei(234)
Research on On-line Monitoring System of Power Supply Equipment in Coal Mine	Zhao Congmin(236)
Design and Function Realization of Automatic High Regulating Electrical Control System for the Shearer	Ji Jianan(238)
Design of Methane Concentration Monitoring System in Guozhuang Coal Mine	Li Yachao(240)
Application of Intelligent Mining Face Automation Technology	Wei Yu(242)
Application Research of Intelligent Control System for the Belt Conveyor	Zhang Qianqian(244)
Design of Automatic Control System for Heavy Medium Coal Selection	Zhang Mengyao(246)
Design of Electrical and Hydraulic Control System for the Belt Conveying Mechanism	Yuan Yunfeng(248)
Research on the Intelligent Control System of Suspension Density in Heavy Medium Sorting Process of Coal Preparation Plant	Zhang Ping(250)
Study on Safety Protection of Explosion-proof Railless Rubber Wheel Car	Sun Zhiyu(253)
Research and Application of Automatic Section Forming Scheme of Cantilever Roadheader	Xing Yongfeng(256)
Design of Intelligent Control System for Coal Slurry Pressure Filter in Coal Preparation Plant	Han Long(259)
The Power Balance Control of Multi-motor Drive Scraper Conveyor	Wu Jiajia(262)
A Study on Intelligent Control System of MG930-WD Shearer	Kang Gui(265)
Design of EBZ260 Model Roadheader Electric Control System	Song Ruojie(268)
The Ways to Reduce Forging Cost and Its Effects	Yu Hua(271)
On-site Safety Management of Transportation Mechanical and Electrical Equipment in Slant Lane	Yang Shiwei(273)
Analysis of Comprehensive Fire Protection Technology in Complex Coal Mine Area	Xu Yunfei(275)
Research and Application of Vehicle Ring Pollution Detection System Based on Big Data	Zhang Jian, Huang Xuzhe(277)
Application of Visual Recognition System in Shore Bridge Automation	Xu Yueqian(279)
Discussion on Maintenance Technology of NC Machine Tool	Ye Zhongli(282)
Characteristics and Application of Diesel Engine for Surface Ship Power Installation	Wu Saite(284)
Analysis of Optical Fiber Trigger Failure of Frequency Conversion System of WK-35 Excavator	Zhou Rong(288)
Analysis on the Cause of Frequent Burning of Moving Winding of Wajinwan Coal Industry in Datong Coal Mine Group	Xu Jing(290)
Probe into Maintenance of Mine Ventilator and Main Trouble Shooting Methods	Zhou Yuqin(292)
Common Fault Analysis and Preventive Measures of Hydraulic Support in Coal Mine	Mao Weihong(294)
Setting of Flameproof Switch for Mine and Analysis of Fault Treatment	Yan Zhenqi(296)
Study on Common Fault and Improvement Measures of Coal Mine Scraper Conveyor	Zhang Shaohua(298)
Countermeasures for Noise Control in Coal Mine Fan House	Liu Cuiping(300)
Study on Efficiency Optimization of Belt Conveyor	Lu Kai(302)



大运汽车
DAYUNAUTO

V9

为高端而生
伴重任而行



大运V9 6X4牵引车



大运重卡官方公众微信
账号：山西大运汽车销售有限公司
销售热线：0359-2537999 2537333
公司网站：www.dayunmotor.com



大运重卡服务公众微信
账号：大运重卡服务
服务热线：400-653-9898
出品：山西大运汽车销售有限公司

地址：山西省运城市运城经济技术开发区机场大道1号
邮编：044000 <http://www.dayunmotor.com>
销售电话：0359-2537999 2537333
传真：0359-2537209 服务热线：400-653-9898