

QK2304851

机械管理开发

MECHANICAL MANAGEMENT AND DEVELOPMENT

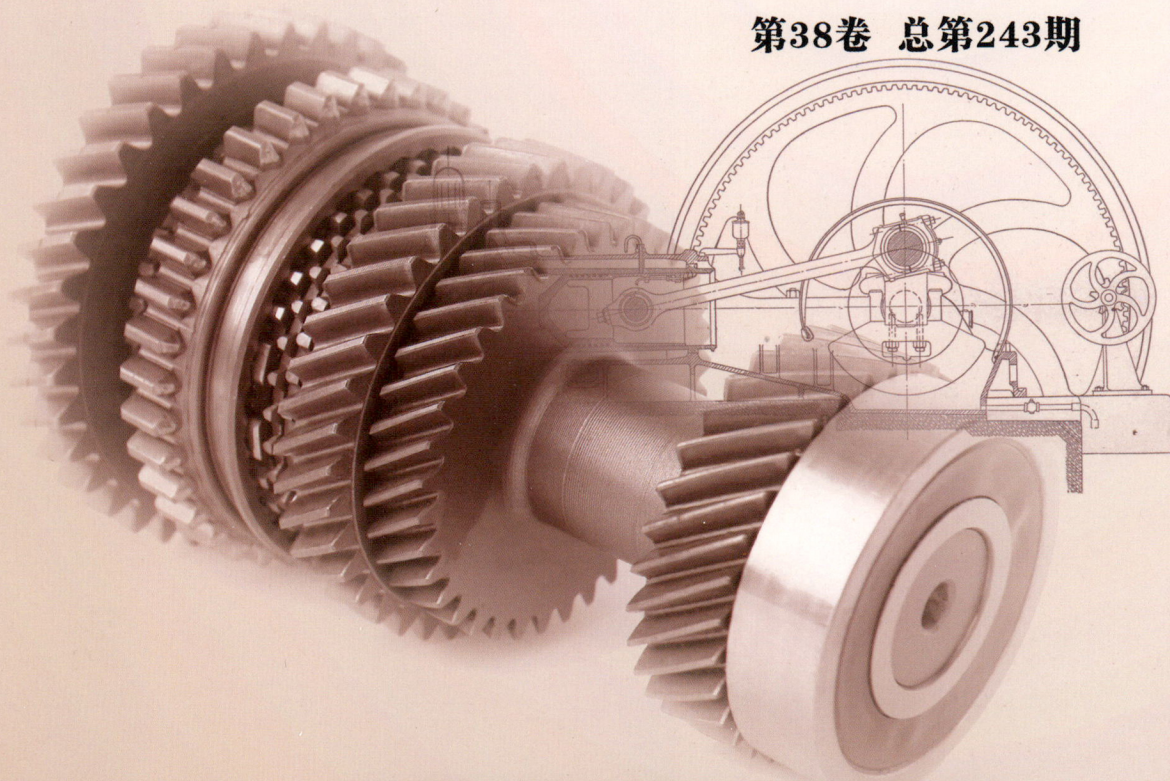
主管单位：山西省工业和信息化厅

主办单位：山西经济和信息化出版传媒中心

山西省一级（优秀）期刊

2023年第7期

第38卷 总第243期



- 中国核心期刊（遴选）数据库收录期刊
- 中国期刊全文数据库全文收录期刊
- 中国学术期刊网络出版总库全文收录期刊
- 中国学术期刊综合评价数据库来源期刊
- 中国学术期刊（光盘版）全文收录期刊
- 中文科技期刊数据库（维普网）收录期刊
- 万方数据—数字化期刊群全文上网期刊

ISSN 1003-773X



9 771003 773239

定价：人民币20元

万方数据

目 次

·试验研究·

基于 ANSYS 的一种长大件工装底座的静态结构分析	饶 金,陈川龙(1)
基于地铁车辆定频和变频空调能耗及舒适性研究	章贺磊,薛世城(5)
滚珠丝杠用 60° 角接触球轴承支撑结构分析	宗 华(8)
高速大功率柴油机连杆大端孔椭圆度加工与控制	吴 鑫,李晓霞,李二红,李 峥,田 甜,刘 磊(10)
综采工作面采煤机滚筒叶片磨损问题研究	武慧文(15)
热压工艺参数对蜂窝夹层结构浸润性的影响	王宇豪,崔 旭(17)
旋流器离心浓缩工艺参数的优化	徐 达(21)
直壁件数控渐进成形厚度均匀化研究*	赵欣琦,张博文,韩文浩,张敬东,朱 虎(23)
煤矿液压支架使用时整体结构性能分析	郝立光(26)
润滑剂改善柴油机缸盖与螺栓结合面接触性能的研究	刘志刚,冀树德,张兴刚,张 科,贾 伟,齐国栋,高 巍,毛玉欣,陈卓群(28)
沥青路面热风喷枪预混合系统改进性能研究*	江殿臣,王业双,孙 桓,袁 磊,关继仁,姜玉荷,唐 丹(32)
碳纤维复合材料用于新能源电池箱的研究	赵宜阳,葛良玉,郑江文(34)
复合工况下液压支架顶梁及底座的应力作用仿真分析	张 荣(36)
矿井主排水泵采用变频前置泵提高运行效率的研究	李连芳(39)
基于有限元分析带式输送机机架结构仿真分析	张 鹏(42)
刮板输送机中部槽磨损问题分析与改进策略研究	韩煜斌(44)
破碎机粉尘数值模拟及除尘器的选择	张 龙(47)
基于 AMESim 液压支架的动态特性仿真分析	马 帅(49)
全地面起重机动力传动技术分析	马 峰(52)
选煤厂振动筛减振技术研究	马 杰(54)
煤矿通风机变频特性实验及实例分析	郭全武(56)
截齿安装约束的动力学性能研究	孙增乐(58)
液压支架双伸缩立柱在冲击载荷下的受力仿真研究	梁凯杰(60)
参数变化对水力旋流器流场的影响	郭丹丹(62)
重介质旋流器系统对煤泥性质的影响分析	张 凯(65)
采煤机截割煤岩石的数值模拟研究	郝 伟(67)
结构参数和操作参数对压滤机过滤效果的影响	史文亮(69)
矿井提升机主轴螺栓布置方式对其连接性能的影响分析	祁 冀(72)
选煤厂弧形筛筛板的柔化及仿真分析	宋 丹(74)
基于模糊控制实现采煤机的自动化调速控制	薛 锐(76)
液压支架偏心载荷作用下疲劳寿命的分析	胡彩霞(79)

重介质旋流器入口压力和悬浮液密度控制研究	韩变变(81)
带式输送机运行过程动态优化控制设计及实验研究	朱晓倩(83)
新型动态扫流板压滤机实验研究	杨怀杰(86)

·专题综述·

基于 CDIO 导向的应用型本科高校单片机课程改革研究*	孙晓雪,雷立群(88)
轨道交通站内智能储物设施研究与设计	于 瀛(91)
我国自主 / 遥控水下机器人研究现状*	王福利,任宝祥(94)
基于 CAM 技术的数控加工课程改革的研究*	王紫民,刘晓瑞,荆忠亮(97)
煤矿提升机制动系统故障检测方案的设计与验证	茹庆锋(100)

·结构设计·

机械手的结构设计及 PLC 控制	孙晓红(103)
带式输送机尾部驱动张紧力自动调节研究	陈召霞(105)
基于磁力检测法的磁滞回线检测装置开发*	吕广源,杨晓惠,李鹏飞,陈 龙(108)
综合机械化采煤的设备选型及总体配套设计研究	杨 峰(110)
分选机的设计及试验研究	张 静(112)
长距离运输带式输送机张紧力控制装置研究	曹 伟(115)
刮板输送机中部槽结构设计优化研究	杨向峰(117)
煤矿换杆液压钻车的设计及应用	周晓芬(120)
起重机的防摆控制研究	方 静(122)
架空乘人楔形钢丝绳断绳抓捕装置的设计与仿真分析	樊嘉楠(125)
煤矿液压支架中自动加压装置的设计及应用研究	赵 军(127)
煤矿液压支架立柱油缸结构设计	陈海斌(130)
带式输送机快速换带系统的设计及应用	李志刚(132)
全液压坑道钻机定向制动装置的设计及试验	唐辉辉(134)
选煤厂圆管带式输送机桁架梁结构的优化设计	席亚峰(137)
适用于机械化采煤工作面转载机的设计	陈 璐(139)
提高回流焊用异步电动机的耐热耐磨性技术探讨	李敏超(141)
提升机张力平衡装置的设计	许兴文(144)
高频振动筛的优化设计及静动力学分析	徐建云(146)
带式输送机跑偏原因分析及纠偏装置的设计	张 斌(148)

·优化改造·

垃圾焚烧发电锅炉省煤器吊挂装置研究	陈 玲,刘 鹏,陈锋利(151)
通风机的技术改造及工程应用效果	黄汉斌(153)
车用传动轴的优化设计研究	徐江涛(155)

自动上料装置桁架轻量化设计	范永彬,高建平,方 崧,王俊锋,宣守锐(158)
综采工作面设备列车优化改进及应用	谢经京(160)
采煤机牵引机构接触应力分析及其结构优化研究	杨晓林(163)
破碎围岩巷道变形特征及支护优化	刘瑞生(165)
复杂煤层条件下滚筒截割性能参数优化分析	杜利伟(168)
矿用液压支架顶梁结构强度优化措施	孙雪峰(170)
矿用配电装置枪栓式两防锁的设计	郭 波(172)
关于煤矿带式输送机传动滚筒的优化设计及其应用	李 帆(174)
新型矿用带式输送机托辊有限元分析及结构优化	翟建忠(177)
大断面巷道破碎顶板支护优化	李 璋(179)
模糊 PID 在煤矿空压机节能控制系统中的应用	石晓涛(181)
煤矿用硬岩巷道智能化钻装锚掘进机设计	杨 磊(184)
高应力大倾角切眼综掘施工工艺优化	苏泽明(186)
煤矿提升机卷筒装置辐板结构的优化设计	李志超(188)
煤矿巷道快速掘进支护方案优化研究	高子健(191)
煤矿掘进机电缆牵引装置的改造及应用	宋志伟(193)
·自动化系统设计·	
基于 PLC 的立体仓储控制系统设计*	程 晟(195)
射线辐射成像绿通车综合检测系统设计	李卫锋(199)
基于 PLC 控制器的煤矿卡轨车控制系统研究	霍志峰(201)
工程装备电控系统故障检测技术研究	杨志英,张建华(204)
采煤机摇臂智能调高控制系统设计与功能实现	刘俊强(207)
基于负载预测的刮板输送机调速控制研究	史瑞姣(209)
全断面掘进机推进系统的电液控制系统研究	庞燕飞(212)
基于视频图像车型识别的门架稽核系统的设计与研究	杜浩然(214)
矿用空压机智能联控分析	张 杰(217)
基于 PLC 的矿井通风机运行状态监测及预警体系的应用研究	陈浩锐(219)
煤矿机械液压故障及处理分析	赵佳祥(221)
井下电机车调度监控自动化设计	田少帅(223)
神经网络在带式输送机张紧力控制系统中的应用与对比	吕 杰(225)
悬臂式掘进机远程监控系统设计及应用	刘小龙(228)
运输顺槽无轨自移列车系统研发及应用	王 东(230)
矿用电机车变频调速系统研究	郭军凯(232)
采煤机电磁调速控制系统设计	白建云(234)

矿井动叶可调主通风机集中控制系统的设计与应用	郭大海(237)
煤矿工作面需风量预测及通风机智能调速控制	石永宽(239)
综采工作面液压支架远程控制技术研究及应用	杨书明(241)
基于 PLC 实现提升机变频调速控制系统的设计与仿真	明 澍(243)
·经验交流·	
铁路实施小型养路机械维养的实践探讨	李 喆(246)
某型桥梁装备液压系统典型回路故障分析与排除	张 洪,胡雪豪(248)
煤气压缩机防喘策略研究	侯靖宇(251)
皮带输送机安装维护对跑偏问题的影响及处理措施	许 强(253)
·技术应用·	
煤矿巷道围岩变形实测分析及现场工业性试验	吴力超(255)
超声波技术在发动机再制造中的研究与应用*	王连宏,李 峥,李晓霞,张雪冬,王 刚(257)
钢铁企业动旋转设备振动信号采集技术研究及应用	冯 杰,马刘斌,范小军,梁晓凤,王 鑫,何英锋(260)
孤岛工作面过空巷安全技术研究	申明明(262)
锦瑞煤业 8102 回风顺槽切顶卸压沿空留巷应用研究	王强强(265)
掘进巷道应力区支护技术	卢 义, 张安慎(268)
双电机采煤机协同控制研究	蒋 政(270)
综采工作面回撤通道支护优化研究	李乐飞(272)
综采工作面回撤三角区掩护支架组设计及应用分析	刘号兵(275)
薄煤层螺旋钻机开采工艺的研究	杨 飞(277)
远程智能控制技术在煤矿压风机控制中的应用	王慧杰(279)
山西某矿 60105 工作面回风顺槽支护技术研究	赵 岩(281)
主动支护技术在综放工作面回采巷道超前支护中的应用	吕 梁(284)
三电平变频调速技术在立井提升机的应用研究	宁连旭(286)
全煤巷道掘进漏顶分析及治理技术研究	赵志勇(289)
远距离喷浆机组高效喷浆工艺研究与应用	张 靖(291)
大采高机械化采煤工作面围岩控制技术研究	胡鹏鹏(294)
提升机直流调速控制策略及现场调试	刘愿圆(296)
基于锚索注浆技术的深部高地应力巷道支护实践	马俊杰(298)
软岩巷道支护方案实施及变形监测	柳长荣(301)
选煤厂精煤均质中煤泥破碎搅拌机应用分析	武永旺(303)

注:带★号的为基金资助论文

期刊基本参数: CN 14-1134/TH*1986*m*A4*304*zh*P*¥20.00*3000*124*2023-07

CONTENTS

•Experimental Study•

- Static Structure Analysis of the Frock Base for a Long and Big Component Based On ANSYS
..... Rao Jin, Chen Chuanlong(1)
- Study on Energy Consumption and Comfort Based on Fixed Frequency and Variable Frequency Air
Conditioning of Metro Vehicles Zhang Helei, Xue Shicheng(5)
- Analysis of the Support Structure of 60° Angular Contact Ball Bearings for Ball Screws Zong Hua(8)
- Machining and Control of Ovalness of Large End Bores in High Speed High Power Diesel Engine Connecting Rods
..... Wu Xin, Li Xiaoxia, Li Erhong, Li Zheng, Tian Tian, Liu Lei(10)
- Study on the Wear of Coal Mining Machine Roller Blades at Header Working Face Wu Huiwen(15)
- Influence of Hot Pressing Process Parameters on the Wettability of Honeycomb Sandwich Structures
..... Wang Yuhao, Cui Xu(17)
- Optimisation of Cyclone Centrifugal Concentration Process Parameters Xu Da(21)
- Study on Thickness Homogenization of CNC Progressive Forming of Straight-Walled Parts
..... Zhao Xinqi, Zhang Bowen, Han Wenhao, Zhang Jingdong, Zhu Hu (23)
- Analysis of the Overall Structural Performance of the Hydraulic Support in Coal Mines in Use
..... Hao Liguang(26)
- Improvement of Contact Performance between Cylinder Head and Bolt of Diesel Engine through Lubricant
..... Liu Zhigang, Ji Shude, Zhang Xinggang, Zhang Ke, Jia Wei, Qi Guodong, Gao Wei,
Mao Yuxin, Chen Zhuoqun (28)
- Research on the Improved Performance of Hot Air Gun Premixing System for Asphalt Pavement
..... Jiang Dianchen, Wang Yeshuang, Sun Huan, Yuan Lei, Guan Jiren, Lou Yuhe, Tang Dan(32)
- Research on Carbon Fiber Composite Materials Used for New Energy Battery Boxes
..... Zhao Yiyang, Ge Liangyu, Zheng Jiangwen(34)
- Simulation Analysis of Stress Action under Composite Conditions at the Base of Hydraulic Support Roof Beam
..... Zhang Rong(36)
- Study on Improving the Operating Efficiency of Mine Main Drainage Pump by Using Frequency
Conversion front Pump Li Lianfang(39)
- Simulation Analysis of Belt Conveyor Frame Structure Based on Finite Element Analysis Zhang Peng(42)
- Analysis of Wear Problems and Improvement Strategies of the Central Groove of a Scraper Conveyor
..... Han Yubin(44)
- Numerical Simulation of Crusher Dust and Selection of Dust Collector Zhang Long(47)
- Simulation of Dynamic Characteristics of Hydraulic Supports in AMESim-Based Mechanized Coal Mining Process
..... Ma Shuai(49)
- Analysis of All-Terrain Crane Power Transmission Technology Ma Feng(52)
- Research on Vibration Reduction Technology for Coal Processing Plant Vibrating Screen Ma Jie(54)
- Experiment and Example Analysis of Coal Mine Ventilation Fan Frequency Conversion Characteristics
..... Guo Quanwu(56)
- Study of the Dynamics of the Mounting Constraints of Cut-Off Teeth Sun Zengle(58)
- Simulation Study on the Force of Double Telescopic Column of Hydraulic Support under Impact Load
..... Liang Kaijie(60)
- Effect of Parameter Changes on the Flow Field of Hydrocyclones Guo Dandan(62)
- Analysis of the Effect of Heavy Media Cyclone System on Coal Slurry Properties Zhang Kai(65)
- Numerical Simulation Study of Coal Mining Machine Cutting Coal Rock Hao Wei(67)
- Influence of Structural and Operational Parameters on the Filtration Effect of Filter Presses Shi Wenliang(69)
- Analysis of the Influence of Bolt Layout on the Connection Performance of the Main Shaft of Mine Hoists
..... Qi Ji(72)
- Softening and Simulation Analysis of Curved Screen Plates in Coal Processing Plants Song Dan(74)
- Automatic Speed Control of Coal Mining Machine Based on Fuzzy Control Xue Rui(76)
- Analysis of the Fatigue Life of Hydraulic Supports under Eccentric Load Hu Caixia(79)
- Study on the Control of Inlet Pressure and Suspension Density of Heavy Media Cyclone Han Bianbian(81)
- Dynamic Optimization Control Design and Experimental Study of Belt Conveyor Operation Process
..... Zhu Xiaoqian(83)
- Experimental Study of a New Dynamic Swept-Flow Plate Filter Press Yang Huaijie(86)
- Subject Review•
- A Study on the Reform of Microcontroller Curriculum Based on CDIO Orientation in Applied
Undergraduate Universities Sun Xiaoxue, Lei Liqun(88)
- Research and Design of Intelligent Storage Facilities in Rail Transit Stations Yu Ying(91)
- Research Status of Autonomous/Remote-controlled Underwater Vehicles in China ... Wang Fuli, Ren Baoxiang(94)
- Research on the Reform of CNC Machining Curriculum Based on CAM Technology
..... Wang Zimin, Liu Xiaorui, Jing Zhongliang(97)

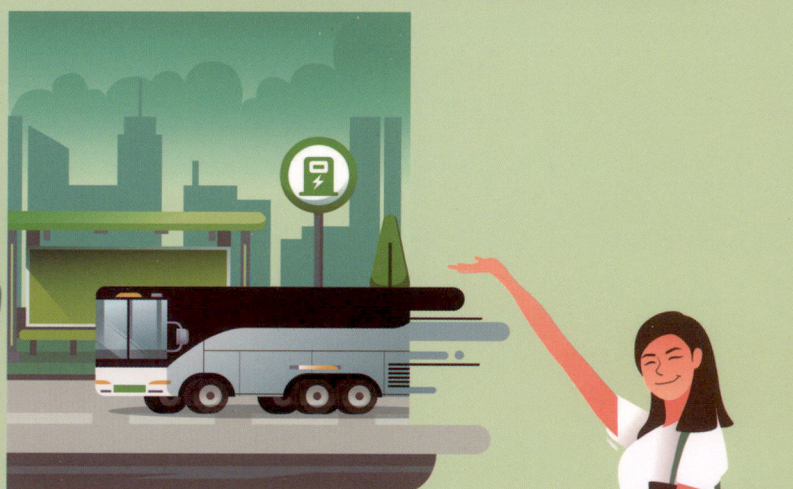
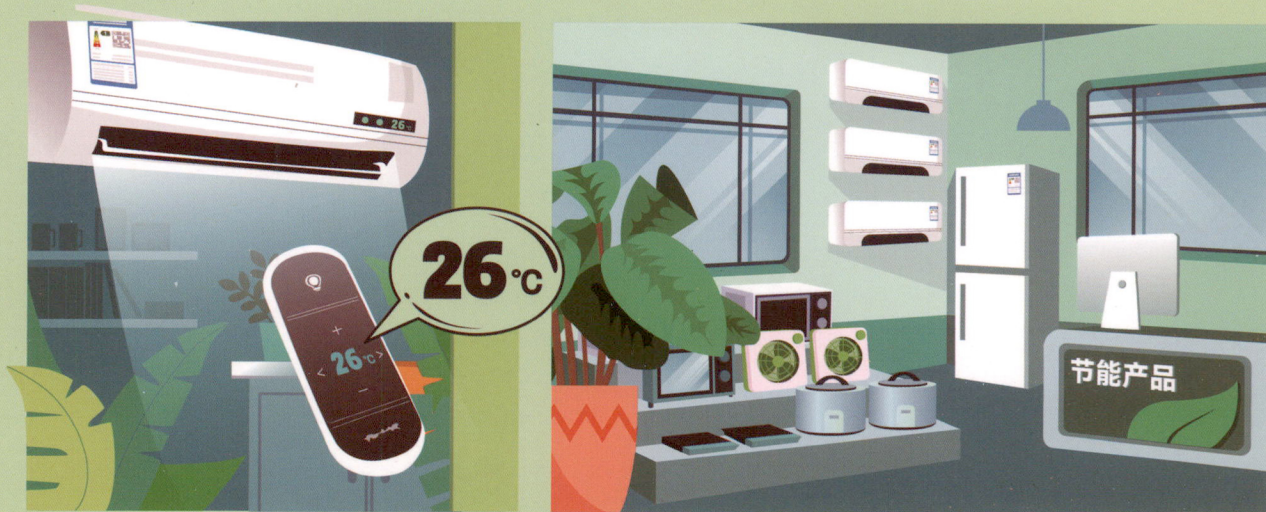
Design and Validation of a Fault Detection Scheme for Coal Mine Hoist Braking Systems	Ru Qingfeng(100)
·Structural Design·	
Structural Design of Manipulator and PLC Control	Sun Xiaohong(103)
Research on Automatic Adjustment of Belt Conveyor Tail Drive Tensioning Force	Chen Zhaoxia(105)
Development of Hysteresis Line Detection Device Based on Magnetic Detection Method	Lyu Guangyuan, Yang Xiaowei, Li Pengfei, Chen Long(108)
Research on Equipment Selection and Overall Supporting Design of Integrated Mechanized Coal Mining	Yang Feng(110)
Design and Experimental Study of Sorting Machine	Zhang Jing(112)
Study of Tensioning Force Control Devices for Long Distance Transport Belt Conveyors	Cao Wei(115)
Study on the Optimization of the Design of the Central Structure of Scraper	Yang Xiangfeng(117)
Design and Application of Hydraulic Drilling Carriage for Rod Changing in Coal Mines	Zhou Xiaofen(120)
Research on Anti-Swing Control of Cranes	Fang Jing(122)
Design and Simulation Analysis of an Overhead Rider Wedge Rope Breakage Catching Device	Fan Jianan(125)
Design and Application of Automatic Pressurization Device in the Hydraulic Support of Coal Mine	Zhao Jun(127)
Research on the Structural Design of Hydraulic Support Column Cylinder in Coal Mine	Chen Haibin(130)
Design and Application of a Quick Belt Change System for Belt Conveyors	Li Zhigang(132)
Design and Test of Directional Braking Device for Fully Hydraulic Pit Drilling Rigs	Tang Huihui(134)
Optimal Design of Frame Beam Structure of Round Pipe Belt Conveyor in Coal Processing Plant	Xi Yafeng(137)
Design of a Loader Suitable for Mechanised Coal Mining Workings	Chen Lu(139)
Technology of Improving the Heat and Wear Resistance of Asynchronous Motors for Reflow Soldering	Li Minchao(141)
Design of Tension Balancing Device for a Hoist	Xu Xingwen(144)
Optimal Design and Static Dynamics Analysis of High Frequency Vibrating Screen	Xu Jianyun(146)
Analysis of the Causes of Belt Conveyor Runout and Design of Deflection Correction device	Zhang Bin(148)
·Optimisation and Reconstruction·	
Study on Coal Saver Hanging Device of Waste-to-Energy Boiler	Chen Ling, Liu Peng, Chen Fengli(151)
Technical Transformation of Ventilation Fans and the Effect of Engineering Applications	Huang Hanbin(153)
Study on the Optimal Design of Automotive Drive Shafts	Xu Jiangtao(155)
Lightweight Design of Trusses for Automatic Loading Devices	Fan Yongbin, Gao Jianping, Fang Yu, Wang Junfeng, Xuan Shourui(158)
Application of Optimization and Improvement of Equipment Train at Working Face	Xie Jingjing(160)
Research on Contact Stress Analysis of Coal Mining Machine Traction Mechanism and Its Structural Optimization	Yang Xiaolin(163)
Deformation Characteristics and Support Optimization of Fractured Surrounding Rock Roadway	Liu Ruisheng(165)
Optimization of Drum Cut-Off Performance Parameters under Complex Coal Seam Conditions	Du Liwei(168)
Measures to Optimize the Structural Strength of Mining Hydraulic Support Roof Beam	Sun Xuefeng(170)
Design of Gun Bolt Type Two-Proof Lock for Mining Distribution Units	Guo Bo(172)
On the Optimal Design of Coal Mine Belt Conveyor Drive Pulley and Its Application	Li Fan(174)
Finite Element Analysis and Structural Optimization of New Mining Belt Conveyor Rollers ...	Zhai Jianzhong(177)
Optimization of Fractured Roof Support in Large Cross-Sectional Roadways	Li Zhang(179)
Application of Fuzzy PID in Coal Mine Air Compressor Energy Saving Control System	Shi Xiaotao(181)
Design of Intelligent Drilling and Loading Anchor Roadheader for Hard Rock Roadways in Coal Mines	Yang Lei(184)
Optimisation of the Construction Process for High Stress Large Inclination Angle Cuttings	Su Zeming(186)
Study on the Optimization Design of Spoke Plate Structure of Coal Mine Hoist Reel Device	Li Zhichao(188)
Study on Optimization of Rapid Tunneling Support Scheme for Coal Mine Roadway	Gao Zijian(191)
Modification and Application of Cable Traction Device for Coal Mine Tunneling Machine	Song Zhiwei(193)
·Automation System Design·	
PLC-Based Stereo Storage Control System Design	Cheng Sheng(195)
Design of a Comprehensive Inspection System for Green Pass Vehicles with Radioactive Radiography	Li Weifeng(199)
Research on PLC Controller-based Control System for Coal Mine Chuck Rail Cars	Huo Zhifeng(201)
Research on Fault Detection Technology of Engineering Equipment Electronic Control System	Yang Zhiying, Zhang Jianhua(204)
Design and Functional Implementation of Intelligent Height Adjustment Control System for Coal Mining Machine Rocker Arm	Liu Junqiang(207)
Research on the Speed Control of Scraper Based on Load Prediction	Shi Ruijiao(209)

Research on Electro-Hydraulic Control System of Propulsion System of Full-Section Roadheading Machine	Pang Yanfei(212)
Design and Research of Gantry Auditing System Based on Video Image Model Recognition	Du Haoran(214)
Analysis of Intelligent Joint Control of Mining Air Compressors	Zhang Jie(217)
Application of PLC-based Monitoring and Early Warning System for Mine Ventilation Fan Operation Status	Chen Haorui(219)
Analysis of Hydraulic Failure and Handling of Coal Mine Machinery	Zhao Jiayang(221)
Design of Automation for Dispatching and Monitoring of Underground Motor Vehicles	Tian Shaoshuai(223)
Application and Comparison of Neural Networks in Belt Conveyor Tensioning Force Control Systems	Lyu Jie(225)
Design and Application of Remote Monitoring System for Cantilevered Roadheader	Liu Xiaolong(228)
Development and Application of Trackless Self-Moving Train System for Transporting Down-Slot	Wang Dong(230)
Research on Frequency Conversion Speed Control System of Mining Motor Vehicle	Guo Junkai(232)
Design of Electromagnetic Speed Control System for Coal Mining Machine	Bai Jianyun(234)
Design and Application of a Centralized Control System for Adjustable Main Ventilation Fans in Mines with Moving Leaves	Guo Dahai(237)
Prediction of Air Demand at Coal Mine Working Face and Intelligent Speed Control of Ventilation Fan	Shi Yongkuan(239)
Research and Application of Remote Control Technology for Hydraulic Support at Header Working Face	Yang Shuming(241)
PLC-based Design and Simulation of a Frequency-Controlled Hoist Speed Control System	Ming Shu(243)
·Experience Exchange·	
Practical Discussion on the Implementation of Small Road Maintenance Machinery Maintenance in Railways	Li Zhe(246)
Analysis and Troubleshooting of Typical Circuit Faults of the Bridge Equipment's Hydraulic System	Zhang Hong, Hu Xuehao(248)
Research on Anti-Surge Strategies for Gas Compressors	Hou Jingyu(251)
Influence of Belt Conveyor Installation and Maintenance on the Problem of Runout and Measures	Xu Qiang(253)
·Technology Application·	
Actual Analysis of Coal Mine Roadway Rock Deformation and Field Industrial Testing	Wu Lichao(255)
Research and Application of Ultrasonic Technology in Engine Remanufacturing	Wang Lianhong, Li Zheng, Li Xiaoxia, Zhang Xuedong, Wang Gang(257)
Research and Application of Vibration Signal Acquisition Technology for Dynamic Rotating Equipment in Iron and Steel Enterprises	Feng Jie, Ma Liubin, Fan Xiaojun, Liang Xiaofeng, Wang Xin, He Yingfeng(260)
Study on the Safety Technology of Crossing Empty Lanes at Isolated Working Faces	Shen Mingming(262)
Application of Cutting the Top and Unloading the Pressure along the Empty Stay in the 8102 Return Wind Chute of Jinrui Coal Industry	Wang Qiangqiang(265)
Support Technology in Stress Zone of Driving Roadway	Lu Yi, Zhang Anshen(268)
Research on Cooperative Control of Dual Motor Coal Mining Machines	Jiang Zheng(270)
Study on Optimization of Support for Retraction Channel of Header Working Face	Li Lefei(272)
Design and Application Analysis of Covering Bracket Group in the Retraction Triangle of Varied Mining Face	Liu Haobing(275)
Study of Auger Mining Process for Thin Coal Seams	Yang Fei(277)
Application of Remote Intelligent Control Technology in Coal Mine Compressor Control	Wang Huijie(279)
Research on the Support Technology of the Return Wind Chute of a Mine in Shanxi 60105 Working Face	Zhao Yan(281)
Application of Active Support Technology in the Over-Support of the Recovery Lane of a Comprehensive Working Face	Lyu Liang(284)
Application of Three-Level Variable Frequency Speed Control Technology in Vertical Shaft Hoist	Ning Lianxu(286)
Analysis of Roof Leakage in All-Coal Roadway Excavation and Management Technology	Zhao Zhiyong(289)
Research and Application of High-efficiency Slurry Spraying Process for Long-distance Slurry Spraying Unit	Zhang Jing(291)
Research on the Control Technology of Surrounding Rock in Large Mining Height Mechanized Coal Mining Working Face	Hu Pengpeng(294)
DC Speed Control Strategy for Hoist and Field Commissioning	Liu Yuanyuan(296)
Practice of Deep high Ground Stress Roadway Support Based on Anchor Cable Grouting Technology	Ma Junjie(298)
Implementation of Soft Rock Roadway Support Scheme and Deformation Monitoring	Liu Changrong(301)
Application of Coal Slurry Crushing Mixer in Coal Processing Plant Homogenization of Fine Coal	Wu Yongwang(303)



2023年全国节能宣传周

7月10日-16日



节能降碳 你我同行

山西省高质量转型发展研究院 宣

万方数据

