

中国科技核心期刊
中文核心期刊
中国科学引文数据库来源期刊

建筑科学[®]

BUILDING SCIENCE

QK2303234

6

2023

第39卷 第6期
VOL.39 NO.6

◆ 中华人民共和国住房和城乡建设部主管

◆ 中国建筑科学研究院有限公司主办

可持续建筑 *Sustainable Building*



《中国科学引文数据库》来源期刊
 中文核心期刊
 中国科技核心期刊
 《中国学术期刊(光盘版)》
 检索与评价数据规范》执行优秀期刊



建筑科学

JIANZHU KEXUE

(月刊)

第 39 卷 第 6 期 (总第 311 期)

2023 年 6 月出版

(1985 年创刊)

主 办:中国建筑科学研究院有限公司
 编 辑:《建筑科学》编辑部
 地 址:北京北三环东路 30 号
 邮 编:100013
 电 话:010-64693291
 电子邮箱(投稿邮箱):bjb365@126.com
 主 编:黄世敏
 副 主 编:徐 伟
 “可持续建筑”编辑组

执行主编:俞英鹤
 责任编辑:俞英鹤
 编 辑:陈 辛

* * * * *

印 刷:北京时捷印刷有限公司
 国内发行:全国各地邮局订阅
 国外发行:中国国际图书贸易总公司
 (北京 399 信箱)
 邮发代号:2-381
 国外代号:BM4129
 国内统一刊号:CN11-1962/TU
 国外标准刊号:ISSN1002-8528
 零 售:《建筑科学》编辑部发行室
 广告经营许可证:京朝工商广字第 0209
 号(101)

目 次

理论 & 实验研究

基于红外图像特征的建筑外墙热工缺陷快速识别方法
 鲁友存,端木琳,王宗山(1)

含盐加气混凝土吸湿行为的实验研究
 何 建,李 琼,孟庆林,任 鹏,黎 珊,吴昊天(10)

建筑整窗隔声性能的预测方法研究
 蔡阳生,张存勳,陈位凤,袁旻志,刘东升(18)

基于运行调控的热源塔噪声控制策略研究 李梦圆,梁彩华,陈肖楠(25)

建筑构件隔声现场测量的近场声全息方法及其应用研究
 熊 威,王红卫,张光耀(32)

夏热冬冷地区典型空调人行为模式提取及应用研究
 吴 奕,燕 达,周 欣,钱明杨,晋 远,刘 华(40)

烹调油烟产生颗粒物 PM_{1.0} 的散发特征及浓度预测
 张金萍,张岩桐,张严匀(50)

赣中地区既有村镇住宅人居环境物理环境研究
 郭娟利,李铭晨,李美玲,王志刚,周扬空(59)

MOF 调湿内饰面的温湿度调节与节能效果研究
 付 林,茅振东,冯 驰,张会波(69)

基于 PET 的湿热地区冬季树木对小气候影响的实测研究
 何 昊,陈 光,陈漪淇,赵立华(80)

滨海建筑环境短时空气盐雾浓度测定方法
 唐 佑,孟庆林,王 凯,赵鹤阳,任 鹏(89)

敦煌传统民居气候适应性营建特征分析研究 刘奔腾,李梦瑶,张雪梅(98)

临街步行空间声环境舒适的视听影响因素研究
 任欣欣,杜 杉,薛依杉,袁旻志,邵社刚(109)

利用“眼动-视野”模型的室内人眼光暴露测算方法 何思琪,严永红(117)

基于一种光散射仪器室内细颗粒物监测结果准确性及影响因素的探究
 袁 扬,柳 靖,张正正,李志强(130)

地理管地源热泵系统分层与均质模型对比分析
 张钰昕,王 悦,周庭正,彭清元,刘贤燕,李 勇,王 勇(136)

严寒寒冷地区高大空间建筑太阳能采暖保证率分析
 范征宇,葛碧秋,刘加平(143)

《中国科学引文数据库》来源期刊
中文核心期刊
中国科技核心期刊
《中国学术期刊(光盘版)》
检索与评价数据规范》执行优秀期刊



建筑科学

JIANZHU KEXUE

(月刊)

第39卷第6期(总第311期)

2023年6月出版

(1985年创刊)

计算分析

基于深度学习的城市屋顶光伏面积识别及光伏发电潜力研究

…………… 刘梦月,彭佳强,肖睿,陈熙,宋梦宇,邓章,陈毅兴(151)

基于分段线性回归的风机盘管空调系统需求响应量化研究

…………… 宋佳明,彭晋卿,曹静宇,殷荣欣,李思慧,邵滢莹(159)

采集即模拟:互联网时代下人流模拟的新方法 …… 孙澄宇,邹明妍,李舒阳(170)

使用 BSDF 数据的教室黑板面反射眩光模拟分析

…………… 陈亚楠,遇大兴,边宇(178)

北京地区既有建筑立面改造中垂直百叶外遮阳设计研究

…………… 胡映东,姜忆南,梁鑫慧(183)

论坛

基于末端调节信号的空调冷冻水变流量运行策略

…………… 方志,梁彩华,白曦(189)

低碳社区清洁能源冷热电联供系统优化研究

…………… 禹丽爽,曾渊,李南帆,王波,张思瑞,李昊(197)

窗外自然景观对人员主观感知及生理指标的影响

…………… 杜玉娇,李念平,周琳莹,姜颖,李晓俊(206)

农村室内热环境对老年人心血管生理参数的影响研究

…………… 顾月,李岩学,贾致伟,高伟俊(213)

坊巷历史街区生理与心理感知效益研究 …… 黄淑萍,葛敏晔,董建文(219)

建筑性能优化设计中优化算法的最佳参数设置研究

…………… 司秉卉,张林斌,李艳霞,石那(226)

上海住宅建筑能效提升目标和技术路径探讨

…………… 潘黎,张文字,杨建荣,赵德印(238)

城市空间形态对热岛效应的影响研究:方法与进展

…………… 张茜,周典,段城江(244)

透光可调围护结构研究发展综述及前景展望

…………… 陈庆英,夏大为,黄宇,吴会军(256)

地热清洁供暖实施现状及对策研究——基于某省实地调研

…………… 侯隆澍,刘幼农,丁洪涛,王珊珊,程杰(266)

承德地区生物质燃料应用于冬季清洁供暖的实践与分析

…………… 李效禹,徐伟,马骊,史琳,

王选,张昕宇,李冰,高桐,李伟,胡启旺,赵万元(273)

* * * * *

[期刊基本参数] CN11-1962/TU * 1985 * b * 16 * 284 * zh * P * ¥15.00 * 8000 * 33 * 2023-06

BUILDING SCIENCE

(Monthly Journal)

No. 6 Vol. 39, June 2023

(Initial Issue in 1985)

Director: China Academy of Building
Research

Edited & Published: Editorial Committee of
BUILDING SCIENCE

Address: 30 Bei San Huan Dong Lu,
Beijing 100013, China

Tel: 86-10-64693291

E-mail: bjb365@126.com

Chief Editor: HUANG Shimin

Vice Chief Editor: XU Wei

"Sustainable Building" Editorial Team

Executive Chief Editor: YU Yinghe

Responsible Editor: YU Yinghe

Editor: CHEN Xin

* * * * *

Distributed in China:

Post Office Code Name 2-381

Distributed Abroad:

China International Book Trading
Corporation

(GUO JI SHU DIAN)

P.O.Box 399, Beijing, China

CONTENTS

Theoretical & Experimental Study

- A Rapid Identification Method for Thermal Defects of Building Exterior Walls Based on Infrared Image Features *LU Youcun, DUANMU Lin, WANG Zongshan* (1)
- Experimental Research on Hygroscopic Behavior of Autoclaved Aerated Concrete Contaminated with Salt
.....*HE Jian, LI Qiong, MENG Qinglin, REN Peng, LI Shan, WU Haotian* (10)
- Research on Prediction Methods for the Sound Insulation Performance of Windows
CAI Yangsheng, ZHANG Cunxu, CHEN Weifeng, YUAN Minmin, LIU Dongsheng (18)
- Study on Noise Control Strategy of Heat Source Tower Based on Operation Regulation
..... *LI Mengyuan, LIANG Caihua, CHEN Xiaonan* (25)
- Study on Near-field Acoustic Holography Method and Its Application in Field Measurement of Sound Insulation of Building Components
..... *XIONG Wei, WANG Hongwei, ZHANG Guangyao* (32)
- Study on the Extraction and Application of Typical Occupant Behavior Patterns of Air-conditioning in Hot Summer and Cold Winter Regions
... *WU Yi, YAN Da, ZHOU Xin, QIAN Mingyang, JIN Yuan, LIU Hua* (40)
- Emission Characteristics and Concentration Prediction of Particulate Matter PM_{1.0} Produced by Cooking Oil Fume
..... *ZHANG Jinping, ZHANG Yantong, ZHANG Yanyun* (50)
- Study on the Indoor Habitat Physical Environment of Existing Village Houses in Central Jiangxi Area
...*GUO Juanli, LI Mingchen, LI Meiling, WANG Zhigang, ZHOU Yangkong* (59)
- Study on the Temperature and Humidity Regulation and Energy Saving Effect of MOF Humidity-controlling Interior Surface
..... *FU Lin, MAO Zhendong, FENG Chi, ZHANG Huibo* (69)
- Pet-based Field Research on the Influence of Trees on Microclimate in Hot and Humid Areas in Winter *HE Hao, CHEN Guang, CHEN Yiqi, ZHAO Lihua* (80)
- Method for Determination of Short-time Airborne Salt Fog Concentration in Coastal Building Environment
..... *TANG You, MENG Qinglin, WANG Kai, ZHAO Heyang, REN Peng* (89)
- Analytical Study on the Features of Climate Adaptability Construction of Traditional Residences in Dunhuang *LIU Benteng, LI Mengyao, ZHANG Xuemei* (98)
- Study on Audio-visual Factors Influencing the Environmental Quality of Acoustic Comfort of Pedestrian Streets with Vehicular Roads
.....*REN Xinxin, DU Shan, XUE Yishan, YUAN Minmin, SHAO Shegang* (109)
- Calculation and Measurement of Light Exposure of Human Eyes in Indoor Space Based on the Gaze-dependent Visual Field Model *HE Siqi, YAN Yonghong* (117)
- Study on the Accuracy of Indoor Fine Particulate Matter Monitoring Results Based on a Light Scattering Instrument and Its Influencing Factors
..... *YUAN Yang, LIU Jing, ZHANG Zhengzheng, LI Zhiqiang* (130)
- Comparative Analysis of Layered and Homogeneous Models for Ground Source Heat Pump System *ZHANG Yuxin, WANG Yue, ZHOU Tingzheng, PENG Qingyuan, LIU Xianyan, LI Yong, WANG Yong* (136)
- Analysis on the Solar Heating Fraction of Large-scale Buildings in Severe-cold and Cold Regions *FAN Zhengyu, GE Biqu, LIU Jiaping* (143)

BUILDING SCIENCE

(Monthly Journal)

No. 6 Vol. 39, June 2023

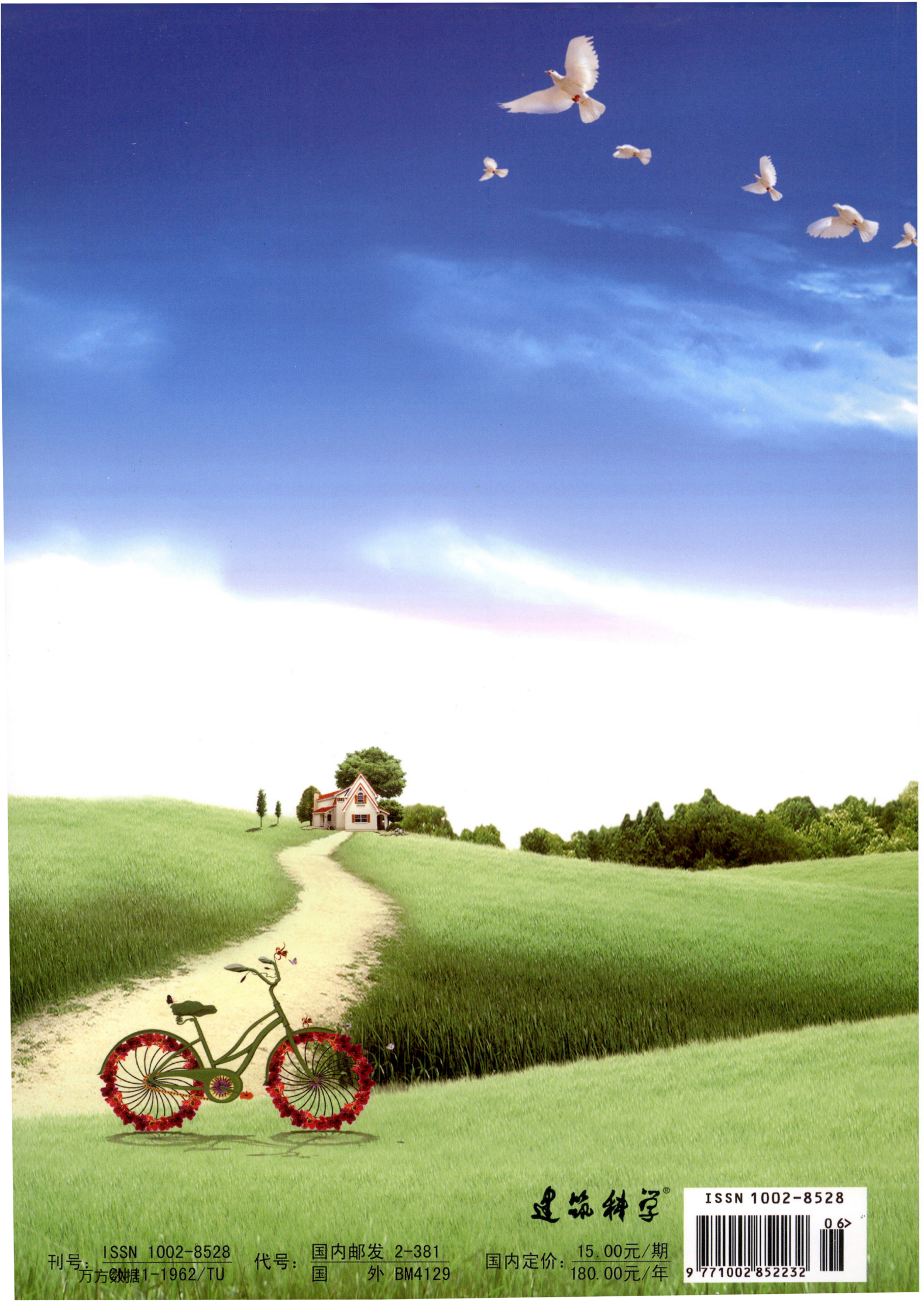
(Initial Issue in 1985)

Computational Analysis

- Study on Deep Learning-based Roof Photovoltaic Area Identification and Photovoltaic Power Generation Potential *LIU Mengyue, PENG Jiaqiang, XIAO Rui, CHEN Xi, SONG Mengyu, DENG Zhang, CHEN Yixing* (151)
- Quantification Study on the Demand Response of Fan-coil Air-conditioning Systems Based on the Piecewise Linear Regression Model *SONG Jiaming, PENG Jinqing, CAO Jingyu, YIN Rongxin, LI Sihui, TAI Yingying* (159)
- Sampling as Simulating: A Web-based Approach of Pedestrian Simulation
..... *SUN Chengyu, ZOU Mingyan, LI Shuyang* (170)
- Simulation Analysis of Reflection Glare Within the Blackboard of Classrooms Using BSDF Data *CHEN Yanan, YU Daxing, BIAN Yu* (178)
- Study on the Design of Vertical Louver External Shading in the Facade Reconstruction of Existing Buildings in Beijing
..... *HU Yingdong, JIANG Yinan, LIANG Xinhui* (183)

Forum

- Variable Flow Operation Strategy of Air-conditioning Chilled Water Based on Terminal Regulation Signals *FANG Zhi, LIANG Caihua, BAI Xi* (189)
- Optimization of Combined Cooling, Heating and Power System Using Clean Energy for Low-carbon Communities
..... *YU Lishuang, ZENG Yuan, LI Nanfan, WANG Bo, ZHANG Sirui, LI Hao* (197)
- Effects of Natural View from Windows on Subjective Perceptions and Physiological Indicators
..... *DU Yujiao, LI Nianping, ZHOU Linxuan, JIANG Ying, LI Xiaojun* (206)
- A Study on the Effect of Rural Indoor Thermal Environment on Cardiovascular Physiological Parameters in the Elderly
..... *GU Yue, LI Yanxue, JIA Zhiwei, GAO Weijun* (213)
- Study on Physiological and Psychological Perception Effects of Historic Blocks
..... *HUANG Shuping, GE Hongye, DONG Jianwen* (219)
- Research on Optimal Parameter Settings of Optimization Algorithms in Building Performance Optimization
..... *SI Binghui, ZHANG Linying, LI Yanxia, SHI Xing* (226)
- Discussion on Energy Efficiency Improvement Target and Technical Path for Residential Buildings in Shanghai
..... *PAN Li, ZHANG Wenyu, YANG Jianrong, ZHAO Deyin* (238)
- Study on the Influence of Urban Morphology on Urban Heat Island: Methods and Progress *ZHANG Xi, ZHOU Dian, DUAN Chengjiang* (244)
- A Review and Prospect on Research Progress of Adjustable Transparent Envelope ...
..... *CHEN Qingying, XIA Dawei, HUANG Yu, WU Huijun* (256)
- Research on Implementation Status and Countermeasures of Geothermal Clean Heating—Based on the Field Investigation in a Province
..... *HOU Longshu, LIU Younong, DING Hongtao, WANG Shanshan, CHENG Jie* (266)
- Practice and Analysis of Biofuel Heating Applied for Clean Heating in Winter in Chengde *LI Xiaoyu, XU Wei, MA Li, SHI Lin, WANG Xuan, ZHANG Xinyu, LI Bing, GAO Tong, LI Wei, HU Qiwang, ZHAO Wanyuan* (273)



建筑科学®

ISSN 1002-8528

刊号: ISSN 1002-8528
万方数据 1-1962/TU

代号: 国内邮发 2-381
国 外 BM4129

国内定价: 15.00元/期
180.00元/年



9 771002 852232