

建筑学报

2017 | 04 | NO. 583

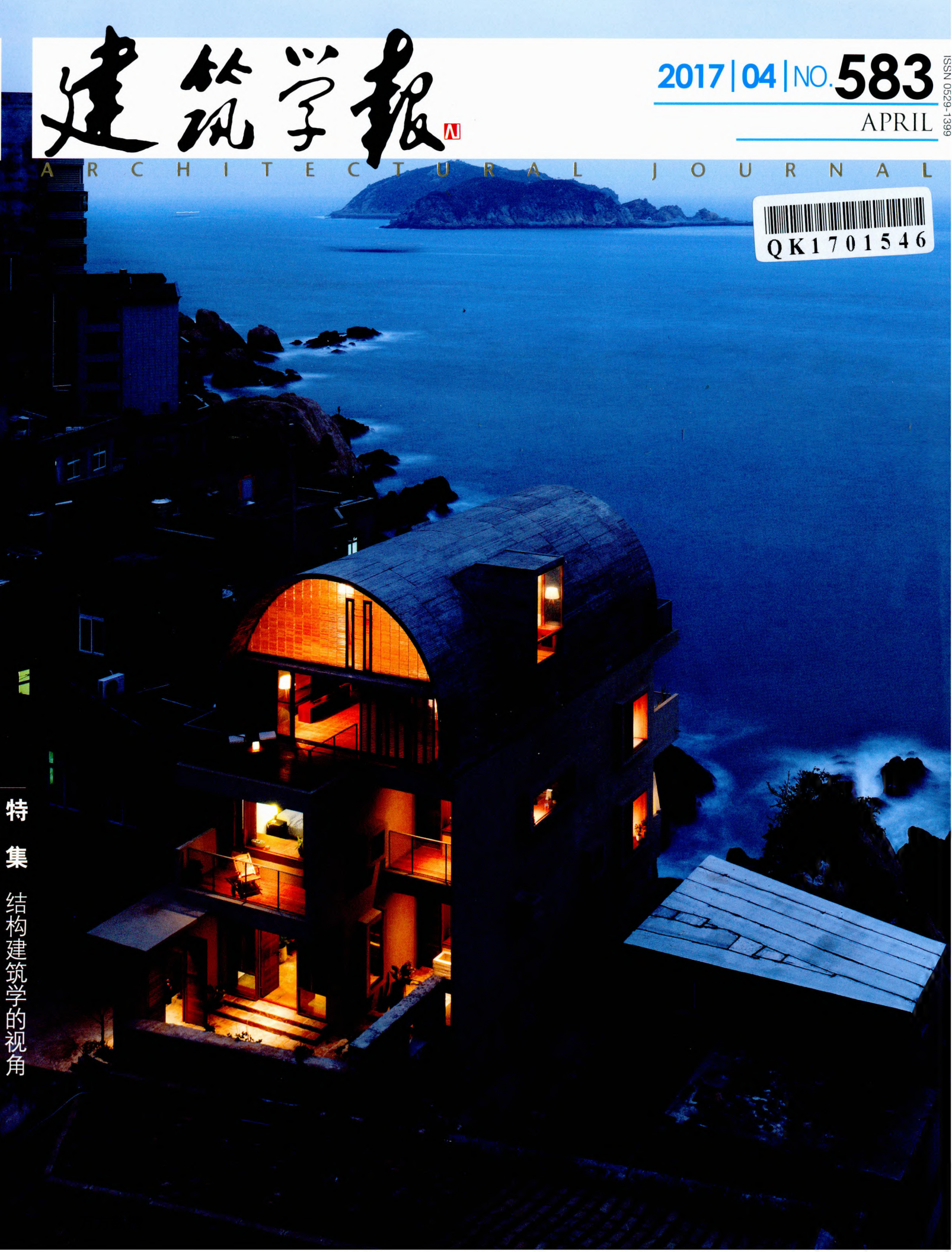
APRIL

ARCHITECTURAL JOURNAL



ISSN 0529-1399

特集
结构建筑学的视角



1 特集 结构建筑学的视角

- 1 理论·实践·教育：结构建筑学十人谈
〔叶静贤 钱晨〕
- 12 结构形态的操作：从概念到意义
〔郭屹民〕
- 15 访谈：反结构表现主义的建筑设计
〔坂本一成 奥山信一〕
- 23 采用表皮结构与芯柱结构的结构建筑学设计方法
〔竹内彻 / 陈星辰 译〕
- 28 结构师视角的“结构建筑学”
〔周健 汪大绥〕

32 作品

- 32 船长之家改造 | 直向建筑 |
- 39 船长之家的过程与启示：多义的浮现
〔张婷〕
- 44 平田农耕博物馆 | DnA 建筑设计事务所 |
- 49 松阳樟溪红糖工坊 | DnA 建筑设计事务所 |
- 52 松阳乡村实践
——以平田农耕博物馆和樟溪红糖工坊为例
〔徐甜甜 汪俊成〕
- 56 深深·深宅 | 素建筑设计事务所 |
- 61 一次无意识的回归
——“深深·深宅”设计回顾
〔马科元 郭少珣〕
- 64 杭州师范大学仓前校区核心区综合体 | 维思平建筑设计 |
- 69 流动的舞台·互联的舞台·平静的舞台
〔陈凌 曲克明〕
- 71 札记
- 71 上海科技大学科技塔设计
〔刘彬〕

目次

建筑学报

2017|04|NO. 583

76 专题

- 76 意外与必然
—— RCR 建筑作品与特点综述
[宋玮 田唯佳]

82 设计研究

- 82 历史文化街区的“微更新”
—— 南京老门东三条营地块设计研究
[叶露 王亮 王畅]
- 87 原真性思想下蒙古包住居文化的现代转译
[白丽燕 梅洪元]
- 91 利用“镜面反射”增加日照、节能减排的实验
[吴正旺 吴彦强]
- 95 以大学为依托的养老社区模式分析
—— 美国大学养老社区经验借鉴
[蔡慧 王哲]
- 100 养老设施中公共浴室类型和设计研究
[钟琳 张玉龙 周燕珉]

105 传统建筑

- 105 福建传统民居色彩区域性研究
[吴素婷 汪斌斌 陈祖建 施并塑]
- 110 鼓浪屿传统民居建筑板门研究
[成丽 邱梦妍]
- 116 广府传统建筑柱础样式的起源与演变
[陈丹 程建军]

1 Special Collection: An Archi-Neering Design Perspective

1 Theory, Practice, and Education: A Ten-People Conversation

of Archi-Neering Design

> *Ye Jingxian, Qian Chen*

12 Maneuvering Structural Form: From Concept to Meaning

> *Guo Yimin*

15 Interview: Anti-Structural Expressionism in Architectural Design

> *Sakamoto Kazunari, Okuyama Shinichi*

23 An Archi-Neering Design Method That Uses Grid-Skin Structure and Spine Concept

> *Toru Takeuchi*

28 Archi-Neering Design from a Structural Engineer's Perspective

> *Zhou Jian, Wang Dasui*

32 Works

32 Renovation of the Captain's House | [Vector Architects](#) |

39 Process and Lessons of the Renovation of the Captain's House:

The Value of Ambiguity

> *Zhang Ting*

44 Pingtian Agricultural Museum | [DnA_Design and Architecture](#) |

49 Songyang Zhangxi Brown Sugar Workshop

| [DnA_Design and Architecture](#) |

52 Rural Practices in Songyang

Examples of Pingtian Agricultural Museum and Songyang Zhangxi Brown Sugar

Workshop

> *Xu Tiantian, Wang Juncheng*

56 Deep³ Courtyard | [SU Architects](#) |

61 An Unconscious Return

The Design of Deep³ Courtyard in Retrospect

> *Ma Keyuan, Guo Shaoxun*

64 The Campus City: A Complex at the Core Area of the Cangqian

Campus of Hangzhou Normal University | [WSP Architects](#) |

69 A Stage of Fluidity, Connectivity and Tranquility

> *Chen Ling, Qu Keming*

71 Notes

71 On the Design of the Tech-Tower in ShanghaiTech University

> *Liu Bin*

76 Special Topic

76 Unexpectedness and Inevitability

Works and Characteristics of RCR Architects

> *Song Wei, Tian Weijia*

82 Research on Design

82 Micro-Regeneration of a Historic and Cultural District

On the Design of the Three-Camp Land Parcel in Laomendong, Nanjing

> *Ye Lu, Wang Liang, Wang Chang*

87 Modern Translation of the Yurt Culture under the Idea of Authenticity

> *Bai Liyan, Mei Hongyuan*

91 An Experiment of Using Mirror Reflection to Improve Natural Lighting and Reduce Energy Consumption and Carbon Emission

> *Wu Zhengwang, Wu Yanqiang*

95 An Analysis of the Model of University-Based Retirement Communities

Learning from American Experiences

> *Cai Hui, Wang Zhe*

100 A Study of the Categories and Designs of Public Bathhouses as Part of Facilities for the Elderly

> *Zhong Lin, Zhang Yulong, Zhou Yanmin*

105 Traditional Architecture

105 A Study on the Regional Identity of the Color on Traditional Houses in Fujian

> *Wu Suting, Wang Binbin, Chen Zujian, Shi Bingsu*

110 A Study on Plank Doors of Vernacular Dwellings at Kulangsu

> *Cheng Li, Qiu Mengyan*

116 The Origin and Evolution of the Column Base in Traditional Guangfu Architecture

> *Chen Dan, Cheng Jianjun*



扫一扫观看精彩视频

麦DSV总部大楼

Longlight 5 - 25°



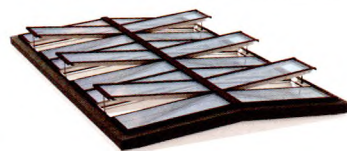
Wall-mounted Longlight 5 - 40°



Ridgelight 25 - 40°



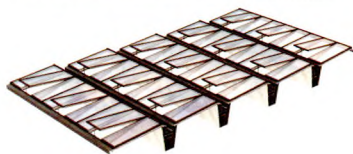
Ridgelight at 5° with Beam



Northlight 40 - 90°



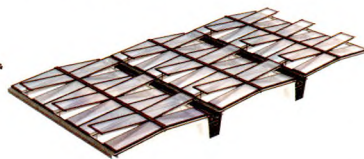
Atrium Longlight 5 - 25°



Atrium Ridgelight 25 - 40°



Atrium Ridgelight at 5° with Beam



威卢克斯VMS模块化智能系统窗

公共建筑 | 工业建筑 | 住宅

- ◆ 原装欧洲进口，装配式一体化全预制系统，模块化设计理念
- ◆ 乐高积木式安装，窗体间无梁自支撑结构，组装体系安全快捷
- ◆ 全智能隐藏式电机，一体化遮阳系统，可配套风雨感应装置
- ◆ 标准模块自由组合，多种规格及应用方案，单窗开启可达3平米
- ◆ 严格的防水抗风压性能，优异的保温及耐热性能，适用于各种极端气候
- ◆ 适用于各种建筑类型的中庭、地下及屋顶等空间，(5-90度)斜面、平顶、立面、阳光房均可安装。

* 以上数据均由威卢克斯提供

威卢克斯(中国)有限公司 电话: 0316-607 2776 手机: 139 3163 2311 网址: www.VELUX.com.cn



威卢克斯官方微信



ISSN 0529-1399



9 770529 139178

邮发代号 国内: 2-192 | 国外: M82

国内统一刊号: CN 11-1930/TU | 国际标准刊号: ISSN 0529-1399 | 定价: ¥36.00 \$25US

万方数据