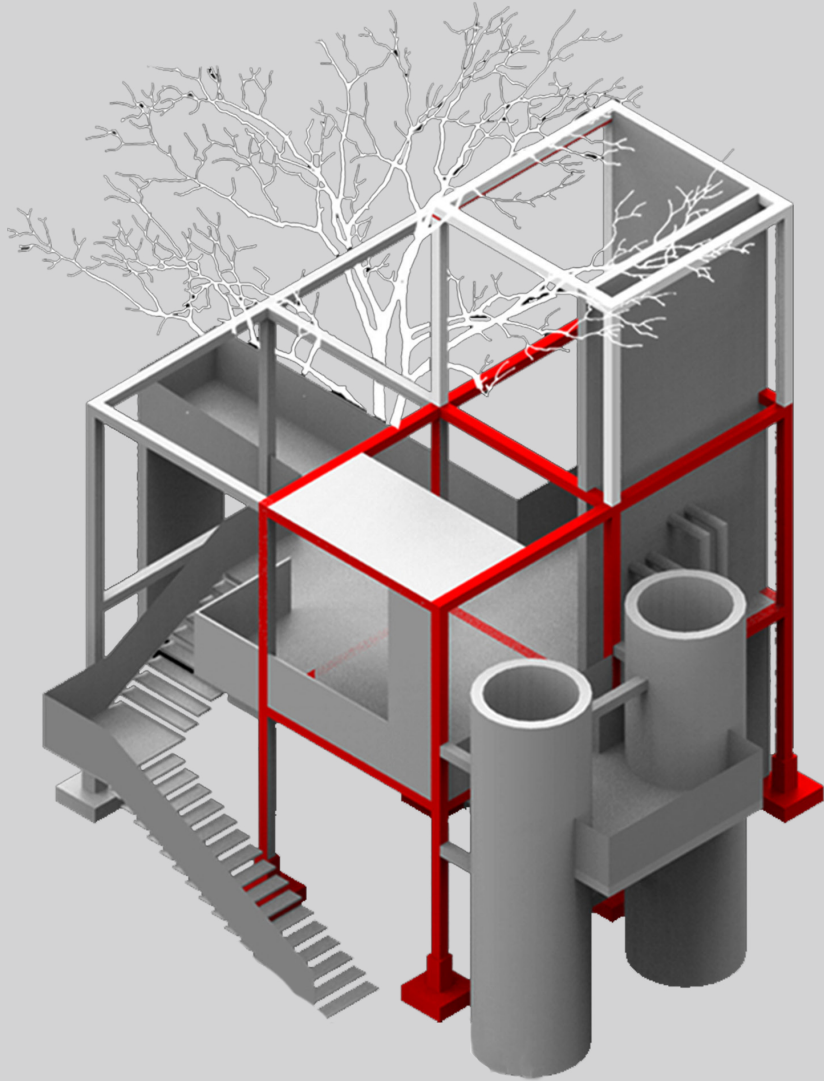




Architecture & Culture

建筑与文化



ISSN 1672-4909



2020/12/No.201

目录 CONTENTS

- A&C 卷首语** 011 铭记革命历史 传承红色文化 / 本刊编辑部
- A&C 关注** 012 基于国际文化遗产展示与阐释理论对上海红色遗址遗迹展示与阐释现状的思考 / 任伟 陈显鸿 杜明
- A&C 齐康专栏** 020 绿色城市生态技术 / 齐康
- A&C 都市设计** 022 岳西天鹅广场高位转换框支剪力墙结构设计 / 赵勇
026 桁架式梁筏基础在三门峡商会大厦中的应用 / 史江涛
- A&C 陈设艺术** 030 藏在华侨城老房子中的“艺术博物馆” / 刘艺
- A&C 理论研究** 036 基于“互联网+”的建筑理论课教学研究——以“公共建筑设计原理”教学设计为例 / 沈纲
039 景观BIM 流程在户外小气候设计中的辅助应用研究 / 李天劼 梅 敬
042 “未来社区”背景下“居住区规划”课程教学改革研究 / 张琳娜 张弦波 程安燕 郑朝灿
045 浅析历史建筑的价值及保护——以浙西地区为例 / 姚自强 孙亚丽 张英铭
047 基于信息空间理论的马坝蜡染保护和传播策略研究 / 宋冬梅 吴剑锋 刘肖健
050 基于GIS和RS的吉林省农村居民点空间分布的区域差异性研究 / 李冰心 张琦琦
053 户外运动室内化——购物中心的新奇特运动项目研究 / 翟佳威 李玲玲
055 乡村振兴背景下的北京村庄规划转型研究 / 胡艳晶
058 寒地街区式商业综合体室外行人热舒适研究 / 严婧宸 梁 静
061 基于空间句法的合肥市老城区地铁站域步行空间认知研究 / 汪 琪
064 韧性视角下不同发展阶段三角洲地区水管理演进与优化策略研究 / 马博轩 王可欣 汪 民
068 南京市老旧小区“老幼复合型公共空间”研究 / 龙旭 黄照 任静茹 林鑫
070 乡村地区基础教育设施均等化目标实现路径研究——以张家港市小学校为例 / 王 明
072 后疫情时代地摊经济空间模式及其合理规划策略研究 / 许若奇 于文波
074 基于POI数据的城市服务设施分布与空间格局研究——以大连市中心城区为例 / 张晶宇 范熙晖
076 基于用户需求的博物馆智慧导览设计研究 / 朱昱宁 谢冰瑶 徐博群
078 泛江南地区传统城市色彩特征与应用实践研究 / 郭红雨
082 基于价值保全和数字仿真的密集型历史聚落性能化消防规划路径 / 李新建
084 晋东南宋金建筑结构特征初探 / 柴琳
086 《园冶》新解——造园美学的运用与追求美好生活的探究 / 庄召建 梅 青
088 基于文脉主义的历史文化街区空间活力营造研究——以洛阳老城西南隅片区为例 / 王沛雨 张仲雅
- A&C 案例解读** 090 基于规划审批项目的开发区“三次创业”成熟期转型研究——以杭州下沙经济技术开发区为例 / 李王鸣 武悦 章明宇
093 紧凑型山地大学校园的人性化空间设计特征研究——以香港大学为例 / 叶丹 蒋希冀
095 “深港双城双年展”视角下探讨展览与城市双向关系 / 曾晴 白静
097 重构失落的时光链——浅谈景德镇老城既有建筑改造设计 / 陈洁 蔡露 李婷
100 社会关系重构下全龄共享养老住区设计探究——以苏州桃花坞大街240号小区改造为例 / 陈秋杏
102 基于“区域公园”策略的工业遗产再生研究——以德国鲁尔区埃姆歇公园为例 / 丁凡 刘鹏
104 国土空间规划背景下村庄用地规模核定探索——以义乌市为例 / 方晓 陈前虎 杜文杨
106 如何实现桥梁建筑景观美学与使用功能的统一——以重庆市东水门长江大桥为例 / 孙玉莲 张玉平 汲生虎 张刚
108 赣派传统村落特色风貌分析——以江西宜丰天宝古村为例 / 肖芬 程晓慧 桂美乐 吴琼
111 活力复兴导向下青岛里院保护与更新策略研究——以广兴里为例 / 张 靓
114 老旧社区外部空间适老化改造的设计前期分析方法研究——以哈尔滨市花园街道辖区为例 / 卫大可 陈雪娇
119 基于场所精神浅谈历史街区改造中的地方特色建设——以席力图召五塔寺区段保护更新为例 / 希木力格 郝占国
122 合肥市公园绿地植物群落物种多样性与生态效益分析——以杏花公园、庐州公园、天鹅湖公园为例 / 胡雅馨 李鹏宇
124 江苏省传统村落空间形态特征研究——以丹阳市柳茹村为例 / 睦 樱 李鹏宇
126 浅析乡村历史文化遗产保护——以辽宁省明长城为例 / 王双琳 范熙晖 周嘉璐
128 存量规划背景下旧住宅区改造评价体系研究——以深圳市罗湖区为例 / 李世雄 赵宁 江丹 熊博
131 健康公平视角下城乡医疗服务设施配置评价与建议——以长沙市为例 / 吴美佳 范睿思

CONTENTS

- 011** Remember the Revolutionary History, Spreading and Inheriting Red Culture
- 012** Applying the International Cultural Heritage Presentation and Interpretation Theory in Shanghai Red Heritage Sites
- 020** Green City and Ecological Technology
- 022** Design of Frame–Shear Wall Structure with High Transfer Floor of Yuexi Swan Square
- 026** The Use of the Beam Raft Foundation with Truss in Sanmenxia Chamber of Commerce Building
- 030** "An Art Museum" Hidden in the Old Houses of OCT (Oversea Chinese Town)
- 036** Research on the Teaching of Architectural Theory based on "Internet +" : Taking the Teaching Design of "Principles of Public Building Design" as an Example
- 039** Research on the Auxiliary Appliance of BIM Process for Landscape Architecture in Outdoor Microclimate Design
- 042** Research on the Class Teaching Reform of "Residential District Planning" under the Background of "Future Community"
- 045** Analysis on the Value and Protection of Historical Buildings: Taking Western Zhejiang as an Example
- 047** Research on Maba Batik Protection and Communication Strategy based on Information Space Theory
- 050** Research on Regional Differences in Spatial Distribution Pattern of Rural Settlement in Jilin Province based on Geographic Information System and Remote Sensing
- 053** Outdoor Sports Indoor: Study on the New Fancy Sports in Shopping Malls
- 055** Research on Beijing Village Planning Transformation under the Background of Rural Revitalization
- 058** Study on Outdoor Pedestrian Thermal Comfort of Block–style Commercial Complex in Cold Regions
- 061** Cognitive Study of Pedestrian Space in the Subway Station Area of Hefei Old City based on Spatial Syntax
- 064** Research on the Evolution and Optimization of Water Management in Deltas at Different Development Stages from the Perspective of Resilience
- 068** Research on the "Old and Young Compound Public Space" in the Old Community of Nanjing
- 070** Research on the Path to the Equalization of Basic Education Facilities in Rural Areas: Taking Zhangjiagang City Primary School as an Example
- 072** Study on the Spatial Pattern and Rational Planning Strategy of Stall Economy in the Post Epidemic of COVID–19
- 074** Research on the Distribution of Urban Service Facilities and Urban Spatial Pattern based on POI Data: Taking the Downtown Area of Dalian as an Example
- 076** Design of Museum Smart Guide based on User Demand
- 078** Study on the Traditional Urban Color Features and Application in River South Region in China
- 082** Proposals of Performance–based Fire Protection Planning for Dense Historic Areas based on Value Preservation and Digital Simulation
- 084** A Preliminary Study on the Structural Characteristics of the Buildings in Song and Jin Dynasties in Southeast Shanxi Province
- 086** A New Interpretation of Yuan Ye: A Study on the Application of Garden–making Aesthetics and Pursuing a Better Life
- 088** A Study on the Construction of Space Vitality in Historical and Cultural Block based on Cultural Perspective: Taking the Southwest Corner of Luoyang Old City as an Example
- 090** Research on the Mature Stage of "Third Transition" of Development Zone based on Planning Approval Projects: A Case of Hangzhou Xiasha Economic and Technological Development Zone
- 093** Study on the Design Characteristics of Humane Spaces in the Compact Mountain University Campus: Taking the University of Hong Kong as an Example
- 095** Exploring the Two–way Relationship between Exhibition and City from the Perspective of Shenzhen–Hong Kong Bi–city Biennale of Urbanism/Architecture
- 097** Reconstruct Lost Time Chain: Discussion on the Reconstruction Design of Existing Buildings in Jingdezhen Old City
- 100** Probe into the Design of Aged–sharing Community based on the Reconstruction of Social Relations: Taking the Renovation of 240 Taohuawu Street in Suzhou as an Example
- 102** Research on the Regeneration of Industrial Heritage based on the Regional Park Strategy : Taking Emscher Park in Ruhr Area, Germany as an Example
- 104** Exploration of Village Land Scale Verification under the Background of Spatial Planning : Taking the Yiwu City as an Example
- 106** How to Realize the Unity of Bridge Construction Landscape Aesthetics and Use Function: Taking Dongshuimen Yangtze River Bridge in Chongqing as an Example
- 108** Analysis on the Characteristic Features of Gan Traditional Villages: A Case Study of Tianbao Ancient Village in Yifeng, Jiangxi Province
- 111** Research on the Strategies of Protection and Renewal of Qingdao Liyuan under the Guidance of Vitality Renaissance: A Case Study of Guangxingli
- 114** Study on the Pre–design Analysis Method for the Age–responsive Environmental Reconstruction in External Space of the Old Community: Taking Harbin City's Huayuan Sub–district Office Area as an Example
- 119** Discussion on the Construction of Local Features in the Reform of Historical Streets based on the Spirit of Place: A Case Study of Xilituzhao Wuta Temple Section
- 122** Species Diversity and Ecological Benefit Analysis of Plant Community in Hefei Park Green Space: Taking Xinghua Park, Luzhou Park, Swan Lake Park as Examples
- 124** Study on the Spatial Morphological Characteristics of Traditional Villages in Jiangsu Province: Taking Liuru Village in Danyang as an Example

CONTENTS

2020/12/No.201



国家自然科学基金
国家社科基金重大项目
国家社科基金艺术学项目
国家自然科学基金青年项目
国家科技支撑计划项目
国家重点研发计划课题
中国自然科学基金青年基金
中央高校基本科研业务青年教师科研创新基金
中央高校基本科研业务专项资金
中国博士后科学基金
中国清洁发展机制基金赠款项目
中国国家留学基金
科技部科技支撑计划
教育部人文社会科学研究青年基金项目
“十三五”国家重点研发项目
国家级大学生创新创业训练计划支持项目
住房城乡建设部科学技术结合项目
福建省自然科学基金项目
福建省教育厅资助项目
辽宁省博士启动基金项目
辽宁省社会科学规划基金项目
江西省艺术科学规划项目
湖南省研究生科研创新项目
湖南省社科基金
湖南省教育厅“十二五”重点科学资助项目
河南省高等学校重点科研项目
河南省科技攻关计划项目
广东省自然科学基金项目
湖北省教育厅人文社科项目
吉林省社科基金项目
吉林省教育厅社科项目
陕西省科技统筹创新工程计划项目
内蒙古工业大学科学研究项目
高等学校博士学科点专项科研基金资助项目等
选择本刊发表文章

- 134 空间设计中文化意向的表达策略研究——以苏州博物馆新馆为例 / 程学四
136 价值视域下陕西“三线工业”旧址保护与再生研究 / 刘怡 雷耀丽

A&C 景观园林

- 138 中国古典园林铺地文化研究 / 周婷婷 武文婷
140 晚明闽地园林山石空间营造理法探析 / 吴怡婧 周向频
144 自然观之形塑——园林叠石对于景观教学之启示 / 曾齐宝 周祎铭

A&C 城市营造

- 146 基于城市触媒理论的历史街区更新策略 / 齐洋毅 鞠伟
148 紧凑城市理论下城市绿色开放空间发展经验与启示 / 尹宇辰 郑志元 高天雅
150 城市开放空间体系建构下的“共享空间” / 黄中山
152 基于集约理论的绿色文化综合体设计策略研究——以卫辉市五馆三心项目为例 / 韦峰 杨笑然 余冰 郅建华
155 景观都市主义视角下城市垃圾填埋场治理初探——以尼日利亚拉各斯Olusosun 设计竞赛为例 / 邓瑞钧 曾晴 白静
158 “隔而不离”——公共卫生事件下城市社区风貌的培育与展望 / 谢空 颜建雄
160 小城镇城区职住失衡问题解决策略研究——以广德市国土空间规划城区空间规划为例 / 陶雨薇 崔小平 李艳蕾
162 秦岭山地城市的通风潜力评估与改善策略——以商洛市中心城区为例 / 曹象明 蔡娟娟 王海峰 赵涛
165 中华人民共和国成立以来城镇化的演进历程与未来发展方向 / 杨爽 吴若兰
167 基于城市特色塑造的建筑文化遗产更新利用研究 / 夏晓雯
169 快速城镇化地区乡村振兴发展策略探究——以苏州市为例 / 吴若兰 杨爽
171 苏州失地农民安置社区微更新设计研究——以高新区华通社区为例 / 胡李平
173 苏州新区交通拥堵分析与缓解策略探究——以苏州市塔园路、邓尉路交叉口为例 / 崔嘉佳
175 城镇特色空间建构与塑造——以冶山老镇区城市设计为例 / 胡幸 陈卓
179 基于“城市缝合”理念的铁路车站区域更新策略探究——以上海南站及其周边区域为例 / 朱彦波 闻增鑫

A&C 探索发现

- 182 当代新媒体艺术的形式与技术实现探究 / 吕欣 李云龙
185 绿色住宅有利于提升企业价值吗？——基于上市房地产企业的实证研究 / 陆梦璐 黄忠华
189 乡村聚落边界形态求取的量化方法探析 / 浦欣成 王颖佳 黄倩
192 场地自然的解读与再生 / 陈超 张秀珍
195 吉林省老工业基地文化旅游开发及生态保护策略探析 / 苑宏刚 齐伟民 田婧
197 方案阶段日照分析策略——基于“居住区规划设计”课程教学的思考 / 尹旭红 卢天佑 龔晶娟
200 小小园林：儿童游戏空间模式语言的类比与建构浅议 / 张斯曼 张馨元 朱晓桐 孙磊磊
202 健康环境设计下的室内菜市场自然通风与室内采光探索 / 蔚澜 李早
204 路易斯·康建筑“风格”背后的造型建构哲学 / 徐帆
207 促进校城协同创新的城市型大学更新策略 / 梁悦 费腾
210 国土空间规划背景下农村产业发展的规划应对 / 周鑫
212 传统村落空间形态的句法研究初探——以鄂东麻城市深沟浣为例 / 袁媛 李鹏宇
214 基于透明性理论的幼儿园建筑空间营造方法探讨 / 于丹丹 郝占国
217 县级全民健身馆与体育馆相结合的设计探索 / 王伟 叶洋
220 转向日常生活视角的旧城更新——让日常生活成为公众艺术 / 芦静
223 大学生社交行为视角下高校餐饮空间优化建议 / 李锶炀 白小鹏
226 基于叙事理论的当代小型殡仪馆发展现状探析 / 贺鑫

A&C 建筑纪实

- 228 纪念性建筑空间的叙事性表达 / 左光之 周柯伊
230 福州上下杭近代建筑砖砌构造特点及成因 / 王晨雨 林志森 马非
233 宏村传统民居病害问题的评估策略与认定机制研究 / 李汀坤 张明皓 孙晓红
236 “公交都市”背景下的现代山地都市空间发展认知 / 胡玲熙

A&C 地域建筑文化

- 240 地域建筑空间文化评析——以张珂、张利和何崑三位建筑师的作品为例 / 王晓飞
243 乡村振兴下大湘西地区传统民居吊脚楼的保护与更新认知 / 杨福翠 姜德心 王兆涵 向俊米 谢文海
245 早期建筑中木板溯源及晋东南斗子形制地域分布考 / 段恩泽 张程雅
248 景德镇历史街区街巷空间特征研究——以彭家弄历史街区为例 / 占媛园 李鹏宇
250 地域文化引导下的传统乡村有机更新——以合肥六家畈村为例 / 万晓敏
252 登封市柏石崖传统村落建筑及文化景观活化设计探析 / 韩韦吾
254 从陆巷古村看传统聚落空间的营建智慧 / 黄雨悦 王海宁
257 冀南英谈古寨历史文化特色与保护探究 / 高瞻 张晶
260 文化景观——亚太地区柬埔寨吴哥遗产保护管理重拾的新策略 / 伍沙
264 巴蜀元代建筑的地域性与时代性——以阆中五龙庙文昌阁为例 / 马婕 韩农晨 杨孟儒 王泊寒 杨涛 陈蔚

A&C 建筑实录

- 268 可持续场地评估系统的实际应用——以芝加哥海军码头为例 / 严雯琪 刘晓明

- 126 A Brief Analysis of the Protection of Rural Historical and Cultural Heritage: Taking the Ming Great Wall in Liaoning Province as an Example
- 128 Research on the Evaluation System of Old Residential Area Reconstruction under the Background of Inventory Planning: A Case Study of Luohu District, Shenzhen City
- 131 Assessment and Suggestions on the Configuration of Medical Service Facilities in Urban and Rural Areas from the Perspective of Health Equity: A Case Study of Changsha City
- 134 Study on the Expression Strategy of Cultural Intention in Space Design: Taking the New Suzhou Museum as an Example
- 136 Study on Protection and Regeneration of "Third-Line" Industry Site under the View of Heritage Value in Shaanxi Province
- 138 Research on the Paving Culture of Chinese Classical Gardens
- 140 Analysis on the Construction Theory and Method of Rock Space in Fujian Gardens in Late Ming Dynasty
- 144 Shaping the View of Nature: Enlightenment of the Gardens Piled-up Rocks on Landscape Teaching
- 146 Protection and Renewal Strategy of Historic District based on Urban Catalyst Theory
- 148 Experience and Enlightenment of Urban Green Open Space Development under Compact City Theory
- 150 "Shared Space" under the Construction of Urban Open Space System
- 152 Research on the Design Strategy of Green Cultural Complex based on the Intensive Theory: Taking Five Venues and Three Center Project in Weihui City as an Example
- 155 A Preliminary Study on Municipal Landfill Renovation from the Perspective of Landscape Urbanism: Taking the Design Competition of Olusosun, Lagos, Nigeria as an Example
- 158 "Isolation, but Association": Cultivation and Prospect of Urban Community Features under Public Health Emergency
- 160 Research on the Solution to Imbalance between Job-Housing in Urban Areas of Small Towns: Taking Urban Spatial Planning of Guangde City's Territorial Space Planning for Example
- 162 The Ventilation Potential Evaluation and Improvement Strategies of Qinling Mountains Cities: Taking the Central Area of Shangluo City as an Example
- 165 The Evolution Process and Future Development Direction of Urbanization since the Establishment of People's Republic of China
- 167 Research on Renewal and Utilization of Architectural Cultural Heritage based on Urban Characteristics
- 169 Study on the Development Strategy of the Rural Revitalization in Rapid Urbanization Area: Taking Suzhou City as an Example
- 171 Research on the Micro-renewal Design of Resettlement Community for Landless Farmers in Suzhou: Taking Huatong Community in Suzhou National Hi-Tech District as an Example
- 173 Analysis of Traffic Congestion in Suzhou New District and Exploration of Mitigation Strategies: Taking the Intersection of Tayuan Road and Dengwei Road in Suzhou City as an Example
- 175 The Construction and Shaping of Characteristic Space of Town: Taking the Urban Design of Yeshan Town as an Example
- 179 Research on the Urban Renewal Strategy of Railway Station Area based on Urban Sewing Concept: A Case Study of Shanghai South Station and its Surrounding Area
- 182 Research on the Form and Technology Realization of Contemporary New Media Art
- 185 Is Green Residence Conducive to Firm Value?: Empirical Study on Listed Real Estate Enterprises
- 189 Analysis of Quantitative Methods of Obtaining the Boundary Shape of Rural Settlements
- 192 Interpretation and Regeneration of Site Nature
- 195 Study on the Cultural Tourism Development and Ecological Protection Strategy of Old Industrial Base of Jilin Province
- 197 Sunshine Analysis Strategy in Scheme Stage: Based on the Thinking of the Course Teaching of *Residential District Planning and Design*
- 200 Mini Garden: A Brief Analogy and Construction of Language Pattern for Children Game Spaces
- 202 Natural Ventilation and Indoor Daylighting in Indoor Vegetable Market under Healthy Environment Design
- 204 Massing Construction Philosophy of the Louis Kahn's Architectural Form
- 207 Urban University Renewal Strategy to Promote University-City Collaborative Innovation
- 210 Planning and Response of Rural Industrial Development under the Background of Territorial Spatial Planning
- 212 A Preliminary Study on the Syntax of Traditional Village Spatial Form: Taking Shengou Village in Macheng City, East Hubei Province as an Example
- 214 Discussion on Space Construction Methodology of Kindergarten Buildings based on Transparency Theory
- 217 Exploration on the Combination of County National Fitness Center and Gymnasium
- 220 Renewal of the Old City Turning to the Perspective of Daily Life: Making Daily life a Public Art
- 223 Suggestions on the College Catering Space Optimization from the Perspective of College Students' Communicative Action
- 226 Analysis on the Development of Contemporary Small Funeral Home based on Narrative Theory
- 228 The Expression of Narrative Space in Memorial Architecture
- 230 The Brick Structure Characteristics and its Origin of Modern Buildings in the Shang-xia-hang Area of Fuzhou
- 233 Research on Evaluation Strategies and Identification Mechanism of Decay Phenomena within Hongcun Traditional Dwellings
- 236 The Cognition of the Modern Mountainous Urban Space Development in the Background of "Transit Metropolis"
- 240 Analysis of Regional Architecture Space Culture: Taking the Works of Three Architects Zhang Ke, Zhang Li and He Wei as Examples
- 243 The Protection and Renewal Cognition of Traditional Folk House Hanging Foot Building in Western Hunan Area under Rural Rejuvenation
- 245 Tracing to the Origin of the Plate in the Early Building and the Regional Distribution of the Dou-Zi Shape in the Southeast of Shanxi Province
- 248 Study on the Spatial Features of Streets and Alleys in Jingdezhen Historical Street: Taking Pengjialong Historical Street as an Example
- 250 Organic Renewal of Traditional Villages under the Guidance of Regional Culture: A Case of Liujiavan Village in Hefei City
- 252 Research on Traditional Village Architecture and Landscape Living Design of Baishiya in Dengfeng City
- 254 The Construction Wisdom of Traditional Settlement Space from the Perspective of Luxiang Ancient Village
- 257 Discussion on the Historical and Cultural Features and Protection of Yingtan Ancient Village in Southern Hebei Province
- 260 Cultural Landscape: A Re-picked up New Strategy for Angkor Heritage Conservation and Management in Cambodia under the Context of Asian-Pacific Area
- 264 Regional Characteristics of Bashu Yuan Dynasty Architecture: Taking the Wulong Temple Wenchang Pavilion as an Example
- 268 Practical Application of SITES Rating System: A Case Study of Chicago Navy Pier