



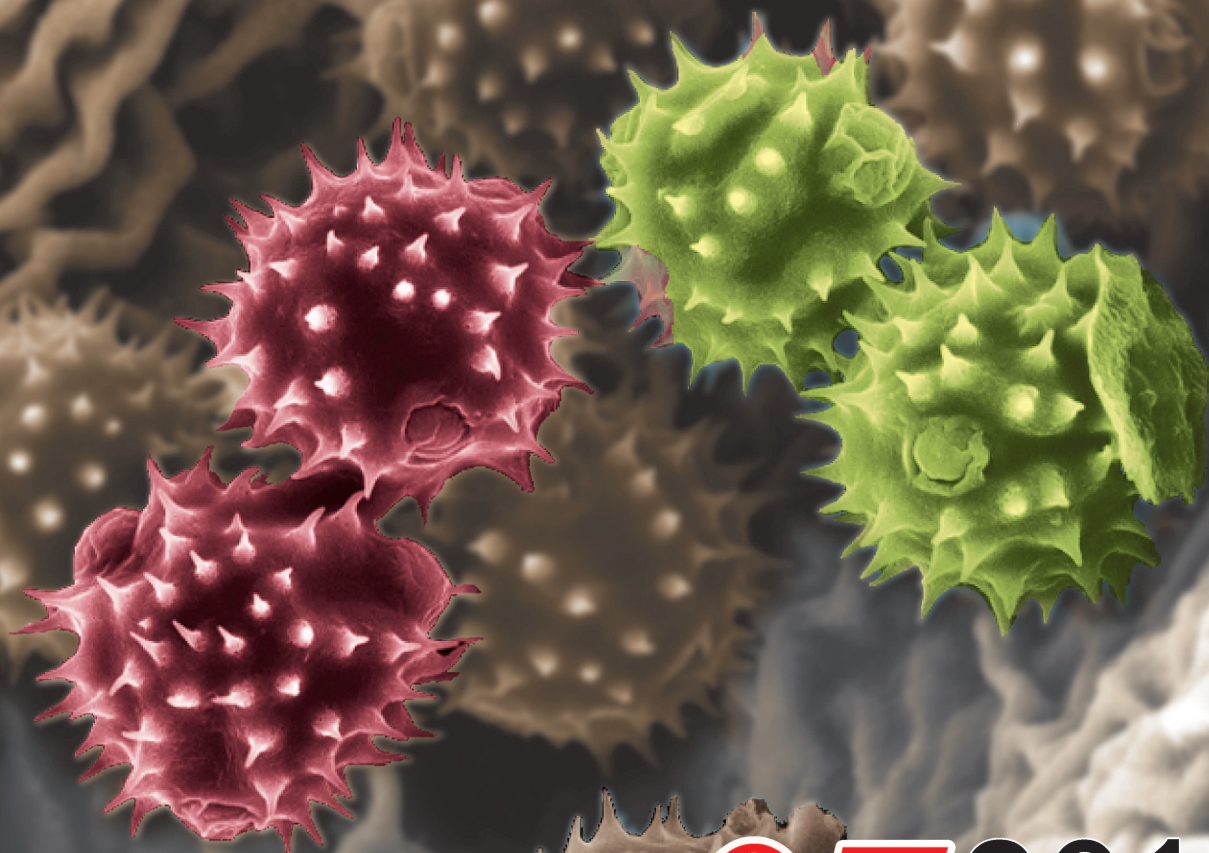
ISSN 2095 - 610X

CN 53 - 1221/R

中国科技核心期刊

# 昆明医科大学学报

JOURNAL OF KUNMING MEDICAL UNIVERSITY



**07** **2019**  
第40卷 第07期  
VOL.40 NO.07



# 昆明医科大学学报

Journal of Kunming Medical University

第40卷 第7期 2019年 7月

## 目次

### 主管

云南省教育厅

### 主办

昆明医科大学

### 编辑

昆明医科大学学报编辑部

### 主编

李松

### 副主编

李燕 解保生 王文林

### 编辑部主任

王文林

### 出版

昆明医科大学学报编辑部

(原昆明医学院学报)

650500 昆明市呈贡新城雨花街

道春融西路1168号

传真:0871-65936489

电话:0871-65936489

0871-65393133

网上投稿: <http://kmykdx.cnjournals.cn>

### 广告经营许可证

云南广字5300004000096

### 封面题字

冯国语

### 封面设计

张正勇

封面图片由昆明医科大学

电子显微镜室提供(伪彩)

### 印刷

云南省国税印刷厂

### 发行

全国各地邮局

### 订购

全国各地邮局

邮发代号64-82

### 定价

每册20.00元

### 连续出版物号

ISSN 2095-610X

CN 53-1221/R

万方数据

细胞因子与恙虫病关系的研究进展

/ 龙瑾庭, 宝福凯, 柳爱华 ..... 1

云南白药对 LPS 诱导小鼠头颅骨炎症模型 NF- $\kappa$ B 和 NFATc1 的影响

/ 刘俊, 和红兵, 任晓斌 ..... 7

恒古骨伤愈合剂对骨质疏松树 肾组织 CD<sub>34</sub> 和 VEGF 的影响

/ 李丽, 曾跃勤, 李进涛, 等 ..... 15

紫草素体外对人结肠癌生长抑制的作用

/ 雷喜锋, 刘韬, 董山潮, 等 ..... 19

NAT2 基因多态性与云南汉族华法林剂量的相关性

/ 欧阳培刚, 张桂敏, 刘寅强 ..... 25

红细胞生成素干预间充质干细胞移植对慢性肾衰竭大鼠的影响

/ 蒋红樱, 张曦, 张乐航, 等 ..... 30

hTERT 基因和 C-MYC 基因在宫颈病变筛查和诊断中的应用

/ 刘洋, 李岱株, 孙春意, 等 ..... 36

PCEA 联合规律间断注入联合不同剂量罗哌卡因对产妇产后镇痛效果及母婴结局的影响

/ 刘旺生, 王金鸿, 黄欢 ..... 41

拉坦前列素、曲伏前列素用于高眼压症、POAG 患者治疗效果及安全性对照分析

/ 纪舒昱, 钟华, 李雷, 等 ..... 47

云南省农村 5 岁儿童龋病状况及其影响因素

/ 崔瑶, 李 晓, 李艳红, 等 ..... 51

儿茶酚抑素与慢性心力衰竭的相关性

/ 朱国富, 全强, 武力勇, 等 ..... 56

人工肱骨头假体置换与肱骨近端锁定钢板固定治疗老年 Neer 三、四部分肱骨近端骨折

/ 程刚, 吴照祥, 李俊宏, 等 ..... 62

左心室射血分数 <45% 的老年慢性心衰患者合并认知功能障碍的影响因素

/ 李云玲, 鲍天昊, 张亚洲, 等 ..... 69

云南省某生殖医学科 161 例 IVF-ET 患者就诊满意度与治疗信心影响因素

/ 张琼芬, 毕艳, 徐健, 等 ..... 74

宫腔镜对子宫内膜息肉因素不孕症的诊断  
/刘庆荣, 宋向菁, 王建兰, 等 ..... 81

新生儿脓毒症休克血清 AT 与 PCT、sh-CRP 相关性及应用价值  
/何玲, 肖晶, 杨必彦, 等 ..... 84

高原环境不同单肺通气时间对肺肿瘤患者复苏的影响  
/赵敏, 王忠慧, 瞿意隐 ..... 88

新生儿先天性甲状腺功能减低症超声筛查的临床价值  
/封淑青, 秦黎, 刘燕, 等 ..... 92

多靶点治疗 IV+V 型狼疮肾炎的临床疗效及对血清白细胞介素水平的作用评价  
/曾怡, 杨敏, 廖云娟, 等 ..... 96

干扰素联合利巴韦林与 DAAs 治疗 HIV 合并丙型肝炎的疗效对比  
/李重熙, 白劲松, 田波, 等 ..... 100

复方  $\alpha$ -酮酸联合低蛋白饮食对腹膜透析患者营养及微炎症状态的影响  
/胡绍兰, 杨敏, 白彝华, 等 ..... 106

阿帕替尼联合伊立替康二线治疗小细胞肺癌的临床疗效  
/张智显, 顾后, 林 , 等 ..... 111

经鼻高流量湿化氧疗对 AECOPD 患者血气分析、再插管率及舒适度的影响  
/陈红梅, 刘利 ..... 116

丽江亚高原地区 316 例纳西族患者房颤分析  
/陈宗宁, 孙林 ..... 120

ADMIRE 重建在双能量 CT 诊断颈部淋巴结病变中对图像质量的影响  
/杨斌, 晏杰, 许家福, 等 ..... 126

Hedgehog 信号通路与基底细胞癌的研究进展  
/郭一俨, 李改赢, 徐丹, 等 ..... 132

长链非编码 RNA 与精神分裂症相关性的研究进展  
/吴杰, 张云桥, 滕兆伟, 等 ..... 137

基于人才培养目标的 SAS 统计分析系统应用课程教学效果  
/王秀清, 毛勇, 常巍, 等 ..... 142

认知行为护理对慢性肾衰血液透析治疗患者的影响  
/常艳萍, 荣冬靖, 缪志菲, 等 ..... 146

编委会主任

李 松

编委会副主任

李 燕

解保生

王文林

编委会委员

(按姓氏笔画排列)

- 于建云 马润玫
- 马林昆 方 菁
- 王文林 王廷华
- 王剑松 王昆华
- 王 琳 韦 嘉
- 孙 俊 刘 流
- 闫 东 任 惠
- 许 彪 阮 冶
- 陆 林 陆 地
- 李 立 李 松
- 李文辉 李利华
- 李 燕 李宗禹
- 沈志强 沈 进
- 何晓光 何 黎
- 何永文 何南飞
- 宋滇平 宋流东
- 余化霖 吴锡南
- 杨丽春 杨丽霞
- 张荣平 章宗籍
- 张铁松 张 竣
- 周红林 范 群
- 屈 燕 郭 涛
- 郭 强 徐永清
- 敖丽娟 黄永坤
- 黄云超 崔汝相
- 程若川 蒋立虹
- 董 坚 解保生
- 谭 晶 瞿勇强

总编审: 屈 燕 责任编辑: 张 丽 英文编辑: 张 旋 统计学审核: 罗家洪 计算机排版: 陶永生

[期刊基本参数] CN 53-1221/R \* 1980 \* b \* A4 \* 148 \* zh + en \* P \* ¥ 20.00 \* 29 \* 2019 - 7

## Governing Body

Department of Education of  
Yunnan Province

## Sponsor

Kunming Medical University

## Editing

Editorial Board of Journal of  
Kunming Medical University

## Editor – in – Chief

LI Song

## Deputy Editor – in – Chief

LI Yan, XIE Baosheng,  
WANG Wenlin

## Director of the Editorial Board

WANG Wenlin

## Publishing

Editorial Department of Journal  
of Kunming Medical University  
1168 Yuhua Street Chunrong  
Western Road, Chenggong  
New District, Kunming,  
Yunnan 650500, China  
Fax: 0871 – 65936489  
Tel: 0871 – 65936489  
0871 – 65393133

online submission: //kmykdx.  
cnjournals.cn

## Advertisement Agency

Yunnan Guang Zi  
No. 5300004000096

## Calligrapher

FENG Guoyu

## Cover Designer

ZHANG Zheng-yong

The cover picture is presented  
by Electromicroscope Department  
of Kunming Medical University  
(False Color)

## Printing

Yunnan Province State Tax  
Printing Factory

## Distributor

Post Offices Throughout the  
Country

## Order

Post Offices Throughout the  
Country

## Price

RMB 20.00 Yuan (China)

## CSSN

ISSN 2095 – 610X  
CN 53 – 1221/R

万方数据

# JOURNAL OF KUNMING MEDICAL UNIVERSITY

Vol. 40 No. 7 Jul 2019

## MAIN CONTENTS

- Research Progress on the Relationship Between Cytokines and Scrub Typhus  
/ LONG Jin-ting, BAO Fu-kai, LIU Ai-hua ..... 1
- Effect of Yunnan Baiyao on NF- $\kappa$ B and NFATc1 in LPS-induced Cerebral Inflammation  
Mice Model  
/ LIU Jun, HE Hong-bing, REN Xiao-bin ..... 7
- Effect of Osteoking on CD<sub>34</sub> and VEGF in Kidney of Osteoporosis Tree Shrew  
/ LI Li, ZENG Yue-qin, LI Jin-tao, et al ..... 15
- Inhibitory Effect of Shikonin on the Growth of Human Colon Cancer Cells in Vitro  
/ LEI Xi-feng, LIU Tao, DONG Shan-chao, et al ..... 19
- Correlation between NAT2 Polymorphism and Warfarin Dose for Han Population in Yunnan  
Province  
/ OUYANG Pei-gang, ZHANG Gui-min, LIU Yin-qiang ..... 25
- Effects of Erythropoietin on Mesenchymal Stem Cells Transplantation in Chronic Renal Failure  
Rats  
/ JIANG Hong-ying, ZHANG Xi, ZHANG Yue-hang, et al ..... 30
- Application of hTERT Gene and C-MYC Gene in Screening and Diagnosis of Cervical Lesions  
/ LIU Yang, LI Dai-zhu, SUN Chun-yi, et al ..... 36
- Effect of PCEA Combined with Regular Intermittent Injection and Different Doses of  
Ropivacaine on Analgesic Effect and Maternal and Infant Outcomes in Pregnant Women  
/ LIU Wang-sheng, WANG Jin-hong, HUANG Huan ..... 41
- Comparative Analysis of Efficacy and Safety of Rattan and Prostaglandin in Patients with  
Ocular Hypertension and POAG  
/ JI Shu-yu, ZHONG Hua, LI Lei, et al ..... 47
- Dental Caries Status and Its Associated Factors among 5-year-old Children in Rural Areas of  
Yunnan Province  
/ CUI Yao, LI Yue-xiao, LI Yan-hong, et al ..... 51
- Relationship between Catestatin and Chronic Heart Failure  
/ ZHU Guo-fu, QUAN qiang, WU Li-yong, et al ..... 56
- Comparison of Artificial Humeral Head Replacement and Locking Proximal Humerus Plate  
Fixation in Treatment of Senile Neer Three or Four-part Proximal Humeral Fracture  
/ CHENG Gang, WU Zhao-xiang, LI Jun-hong, et al ..... 62

Influencing Factors of Cognitive Dysfunction in Elderly Patients with Chronic Heart Failure and Left Ventricular Ejection Fraction < 45%

/ LI Yun-ling, BAO Tian-hao, ZHANG Ya-zhou, et al ..... 69

Factors Affecting Satisfaction and Treatment Confidence of 161 Patients with IVF-ET in a Reproductive Medicine Department of Yunnan Province

/ ZHANG Qiong-fen, BI Yan, XU Jian, et al ..... 74

Hysteroscopy in the Diagnosis of Infertility Caused by Endometrial Polyps

/ LIU Qing-rong, SONG Xiang-jing, WANG Jian-lan, et al ..... 81

Correlation and Predictive Value of Serum Antithrombin Activity with PCT and sh-CRP Levels in Neonates with Septic Shock

/ HE Ling, XIAO Jing, YANG Bi-yan, et al ..... 84

Effects of Different Single-lung Ventilation Time on Postoperative Recovery of Lung Cancer Patients in Plateau Environment

/ ZHAO Min, WANG Zhong-hui, QU Yi-yin ..... 88

Clinical Value of Ultrasound Screening for Congenital Hypothyroidism in Neonates

/ FENG Shu-qing, QIN Li, LIU Yan, et al ..... 92

Clinical Curative Effect of Multiple Targets for Treatment of Type IV+V Lupus Nephritis and on the Effect on the Level of Serum Interleukin

/ ZENG Yi, YANG Min, LIAO Yun-juan, et al ..... 96

Clinical Efficacy Comparison of Interferon Combined with Ribavirin and Direct-acting Antiviral Agents in Treating Chronic Hepatitis C Infection Combined with Human Immunodeficiency Virus

/ LI Chong-xi, BAI Jing-song, TIAN Bo, et al ..... 100

Effect of Compound  $\alpha$ -ketoacid Combined with Low Protein Diet on Nutrition and Microinflammation in Peritoneal Dialysis Patients

/ HU Shao-lan, YANG Min, BAI Yi-hua, et al ..... 106

Clinical Analysis of Apatinib Combined with Irinotecan in the Second Line Treatment of Small Cell Lung Cancer

/ ZHANG Zhi-xian, GU Hou, LIN Jie, et al ..... 111

Effect of High-flow Nasal Cannula Oxygen Therapy on Blood Gas Analysis, Reintubation Rate and Comfort Degree of Patients with AECOPD

/ CHEN Hong-mei, LIU Li ..... 116

Analysis of Atrial Fibrillation in 316 Naxi Patients in Lijiang Sub-plateau

/ CHEN Zong-ning, SUN Lin ..... 120

Effect of ADMIRE Reconstruction on Image Quality in the Diagnosis of Cervical Lymph Node Lesions with Dual Energy CT

/ YANG Bin, YAN Jie, XU Jia-fu, et al ..... 126

Research Progress of Hedgehog Pathway in Basal Cell Carcinoma

/ GUO Yi-yan, LI Gai-ying, XU Dan, et al ..... 132

## Journal of Kunming Medical University

### Editorial Member List

#### Editorial Board Director

LI Song

#### Deputy Editorial Board Directors

LI Yan, XIE Baosheng, WANG Wenlin

#### Members

(by the number of strokes in the surnames)

YU Jianyun	MA Runmei
MA Linkun	FANG Jing
WANG Wenlin	WANG Tinghua
WANG Jiansong	WANG Kunhua
WANG Lin	WEI Jia
SUN Jun	LIU Liu
YAN Dong	REN Hui
XU Biao	RUAN Zhi
LU Lin	LU Di
LI Li	LI Song
LI Wenhui	LI Lihua
LI Yan	LI Zongyu
SHEN Zhiqiang	CHEN Jin
HE Xiaoguang	HE Li
HE Yongwen	HE Nanfei
SONG Dianping	SONG Liudong
YU Hualin	WU Xinan
YANG Lichun	YANG Lixia
ZHANG Rongping	ZHANG Zongji
ZHANG Tiesong	ZHANG Jun
ZHOU Honglin	FAN Qun
QU Yan	GUO Tao
GUO Qiang	XU Yongqing
AO Lijuan	HUANG Yongkun
HUANG Yunchao	CUI Ruxiang
CHENG Ruochuan	JIANG Lihong
DONG Jian	XIE Baosheng
TAN Jing	QU Yongqiang

Research Progress of the Relationship Between Long non-coding RNA and Schizophrenia / WU Jie, ZHANG Yun-qiao, TENG Zhao-wei, et al .....	137
Teaching Efficiency of SAS Application Course Based on Talent Training Goal / WANG Xiu-qing, MAO Yong, CHANG Wei, et al .....	142
Effect of Cognitive Behavior Nursing on Hemodialysis Patients with Chronic Renal Failure / CHANG Yan-ping, RONG Dong-jing, MIAO Zhi-fei, et al .....	146