

■ 全国中文核心期刊

■ 中国科技期刊精品数据库收录

■ 中国知网 中国学术期刊网络出版总库全文收录

■ 中国学术期刊综合评价数据库统计源期刊

■ 美国《化学文摘》《乌利希期刊指南》收录

■ 俄罗斯《文摘杂志》收录

煤矿安全®

SAFETY IN COAL MINES

ISSN 1003-496X

CN 21-1232/TD

8

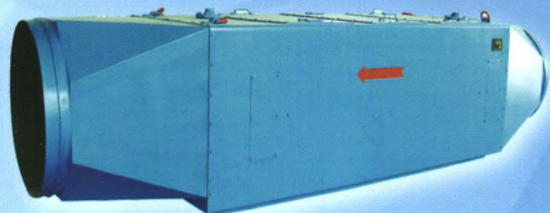
2014

Vol. 45 No. 8

煤科集团沈阳研究院有限公司

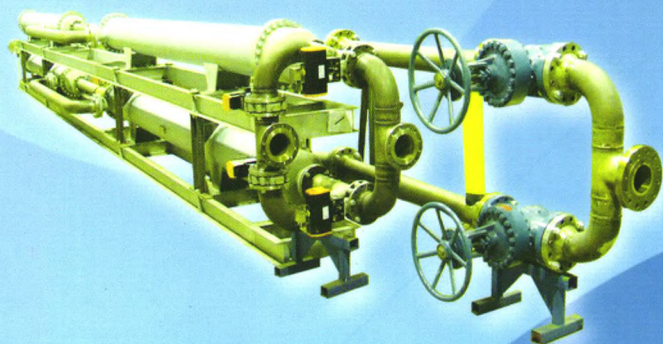
主办

1970年创刊·月刊



空气冷却器

空气冷却器是由钢板外壳和平滑铜管热交换元件组成,是通过铜管内冷却水冷却流过其表面的空气,进而实现降温 and 除湿的热交换器。

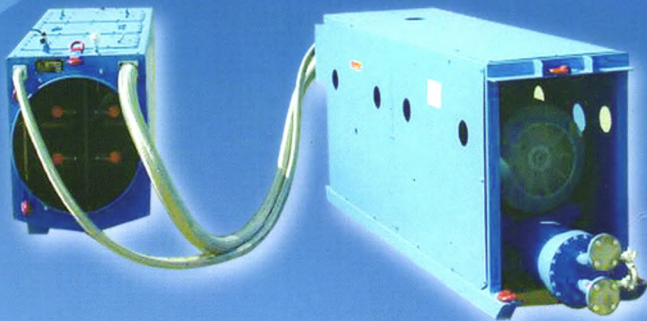


换热站 (高低压换热器)

HERCO MCT换热站又称表面式换热器,采用冷作和焊接结构,原材料为德国进口特制铜管。它由高压换热器和水泵,粗细过滤器和自动补水系统等组成。

局部制冷机 (ZLF-450系列)

引进德国先进制冷技术,主要用于煤矿井下高温环境的制冷降温,产品目前已获得国家矿用安全标志证书。机组主要由压缩机、冷凝器、蒸发器、回冷机和控制器等设备组成。



ISSN 1003-496X



9 771003 496145



herco
中德合资

赫尔柯矿业制冷技术(安徽)有限公司
Herco Mine Cooling Technology (Anhui) Co., Ltd.

地址:安徽省淮南市经济技术开发区啤酒厂路52号 邮编:232007

电话:+86 0554-3319066 传真:+86 0554-3313602

网址:www.hercomct.com 邮箱:zxd@hercomct.com

主管单位

煤科集团沈阳研究院有限公司

主办单位

煤科集团沈阳研究院有限公司

主 编 罗海珠
副 主 编 梁绍权
编辑部主任 王福厚
广告发行主管 刘明智

出版单位 《煤矿安全》编辑部
地 址 辽宁省抚顺市经济开发区
滨河路11号
邮政编码 113122
电 话 (024)56616988 56616987
56616981 56613526
电子信箱 mkaq@163.com
mkaqgg@163.com(广告)
网 址 www.mkaqzz.com
发行范围 公开发行
发行单位 《煤矿安全》编辑部
或全国各地邮局
邮发代号 8-293
印刷单位 煤炭科学研究总院抚顺分院
胶版印刷厂

刊 号 ISSN 1003-496X
CN 21-1232/TD
企业法人营业执照注册号 210400000026129
商标注册证 第1144537号

出版日期 8月20日
定 价 18.00元

编委会北京联络处 (010)64464228
广告总代理 北京嘉诚永力广告有限公司
(010)88482879

目 次

试验·研究

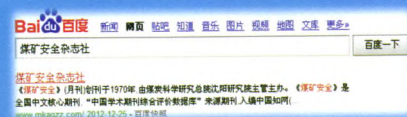
- 高煤级煤层气采收率预测方法及排采工艺优化研究 巫修平(1)
- 2种不同性能炸药爆破振动效应研究 张袁娟,黄金香,赵翔,冯毓松(5)
- 基于煤层原始瓦斯含量和压力的割缝钻孔有效抽采半径测定 刘厅,林柏泉,邹全乐,沈春明,张震,杨威(8)
- 鹤壁煤田瓦斯突出特征及成因研究 巩春生,张明杰,田加加(12)
- 平煤一矿丁₁₅煤层突出危险性预测指标临界值实验研究 张晋京,魏凤清,刘少博,赵国栋(16)
- 脉动瓦斯抽放方式研究 王振平,吴林峰,张华,文虎,王伟峰,孟清华,陈军伟(20)
- 瓦斯抽采钻孔新型柔性膏体封孔材料研究 向贤伟,翟成,李敏,彭深,余旭(23)
- 基于耗氧量的煤低温氧化反应机制的试验 姚彦娜,王俊峰,鄢剑明,张平(27)
- 压气引射孔口除尘器的试验与分析 叶耀冬,程合玉,盛华兴,王助良(31)
- 平煤十二矿己₁₅煤层瓦斯地质规律研究 高建成,张玉柱,吕有厂,孙矩正(35)
- 基于钻屑理论的抽采钻孔合理封孔深度研究 申宏敏,毛桃良,张雷林,尹海,袁光明,于志金(39)
- 瓦斯-细水雾输送管道90°弯管处压降研究 刘志超,谢贺超,郝晶晶,李艳波(42)
- 基于支持向量机的导水裂隙带发育高度预测 谭希鹏,施龙青,王娟,季小凯,景行,邢同菊,刘云(46)
- 突出煤层群底板岩石抽放巷道布置研究 王辉跃(50)
- 极近距离煤层同采工作面顺槽外错布置合理位置研究 都锋(53)
- 基于FLAC^{3D}的斜井揭煤变形规律研究 赵维国(57)
- 膏体充填综采地表移动与覆岩破坏规律 李幸丽(60)
- 近距煤层综采工作面矿压显现规律 孟龙,高召宁(64)
- 西部白垩系冻结立井井壁受力与温度实测研究 奚家米,屈永龙,杨更社,陈新年,李博融(68)
- 井工开采L型工作面冒落带及裂隙带的演化规律 王佳,孙世国(72)

技术·创新

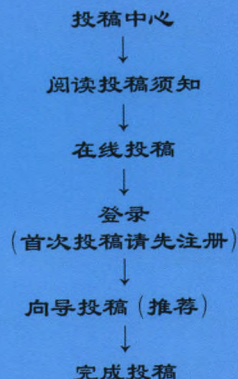
- 工艺巷防治厚煤层综采工作面上隅角瓦斯积聚技术 康怀宇,周游(76)
- 复杂地质条件下高瓦斯近距离煤层群开采工作面瓦斯治理技术 邓志刚,汪东(79)
- 综放工作面采空区煤自燃火灾的定向防控技术 李伟民,董钦亮,宁洪进,时国庆(81)
- 空气涡轮制冷技术在掘进工作面降温中的应用 李同锁,何启林(85)
- 千米深井热害防治技术 罗威,宋选民,刘成(88)
- 集贤煤矿深部开采强冲击危险煤层冲击地压防治技术 王传朋,王元杰,陈法兵(92)
- 山寨煤矿1201综放工作面底板起伏段回采技术 马良慧(95)
- 大西煤业大断面开切眼支护技术 郭晋生(98)
- 火成岩侵入条件下工作面放顶技术 迟占国(101)
- 谢桥矿半原位沿空留巷技术 张鹏冲,张农,季卫斌(104)

设计·开发

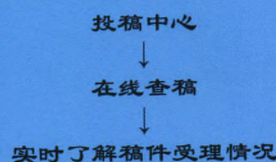
- 基于监控系统的瓦斯异常涌出动态响应机制 马丽娟(107)
- Blackstar EM-MWD在空气潜孔锤钻井中的应用 史海岐(110)
- 便携式矿用红外甲烷气体检测仪电路设计 袁本银,曲保伟(114)
- 便携式无线甲烷检测报警仪的设计 王伟(117)
- 煤矿压风机变频节能改造 唐硕(119)
- 矿井多水平自动化排水控制系统 杨晓辉(122)



投稿流程:



查稿流程:



注: 投稿请用IE浏览器

本刊声明:

☆ 本刊所有来稿自投稿之日起3个月内未收到“稿件采用通知书”,作者可另行处理,在此之前请勿一稿多投。
☆ 根据编辑加工原则,本刊可能会对采用的稿件进行必要的删改,不同意删改的,请在投稿时声明。
☆ 本刊有出电子版、网络版、与网站技术交流和与各数据库合作的权利,作者著作权使用费(包括上述几种方式),并与本刊稿酬一次性付清。如作者不同意将文章以上述形式收录,请在来稿时声明。

- 水位自动控制式水封阻火泄爆装置设计 荣佳,胡双启,周温,雷武(126)
煤矿供电系统单相接地故障区域确定 王志洁,王彦文,李波(129)
木城洞煤矿安全培训管理信息系统 赵红泽,白玉奇,杨富强,赵博深,孙健东,杨墨,李泽荃(133)
煤矿避难硐室生存环境关键技术 邱天德(136)
基于煤矿人员定位系统的寻人定位仪设计 李晓刚(139)
基于粗糙集与VC的液压支架固定帧数据处理 胡波,廉自生(142)
一种矿区地表变形三维可视化预计方法 郭献涛,黄腾,张荣春,毛羽丰,邱志伟(145)
大屯矿区单轨吊运人系统应用 朱高鹏,李攀攀,吴中伟,谭建华(148)

应用·实践

- 坑透钻探及跟踪分析法在突出煤层过地质构造带中的应用 宋子良,王学民,姚威,王继宇,马小飞(151)
安顺煤矿西翼运输下山小倾角长距离揭煤防突工艺 王海山,张保东,刘洋(154)
依兰矿区伴生巨厚油页岩煤层自燃特性 王正忠(156)
同位素测氦技术在煤矿火源位置探测中的应用 安世岗,孙勇,王世栋,王刚,张德鹏(159)
任楼矿II1采区近距离煤层发火危险区域快速定位与治理 刘宜平,曹凯(162)
中空注浆锚索在轨道上山修复中的应用 季卫斌(165)

分析·探讨

- 综采放顶煤工作面邻近层瓦斯涌出量预测方法的探讨 李德洋(169)
基于多源信息融合的瓦斯涌出量预测方法 邱志强(172)
钻屑复合指标预测工作面突出危险性 刘永茜,邓志刚,张浪(175)
基于主成分分析法的煤层瓦斯压力影响因素分析 王永敬(179)
海石湾煤矿煤层伴生油页岩层自燃原因及对策 王君得(183)
七台河分公司矿井内因火灾的防治探讨 韩玉龙(186)
柠条塔矿S1210工作面突水条件分析 姬中奎(188)

- 新庄煤矿白垩系富水基岩立井冻结温度场监测分析 梁博,奚家米,陈新年,杨更社,李博融,屈永龙(192)
照金煤矿综放工作面顶板突水事故原因分析 凌志强,邓军,冯武林,杨鹏(196)
卧龙湖煤矿砂岩含水层富水性预测及评价 彭涛,宣良瑞,张海潮,刘文武(199)
基于CT技术的不同煤体结构煤的孔隙结构分析 张晓辉,康志勤,姜惠芳,李伟(203)
扎赉诺尔矿区II32煤层顶煤冒放性评价 万峰,张洪清,韩振国,邵晓峰(207)
厚煤层大采高液压支架适应性分析 李怀宾,王文,冯敏,芦晓伟,陈鹏宇(210)
综放开采顶煤成拱机理及控制技术 王爱国(214)
大断面厚顶煤巷道顶板离层预警阈值分析 张立海(217)
厚松散层大采高条件下围岩拱形垮落的运动规律 王寅浩(221)
深部巷道围岩变形与破坏特征 任志成,杨胜利,孔德中(224)
泥质含量求取方法综述 徐延勇,薛乾坤(228)
榆家梁煤矿不规则采场顶板控制 赵科,张开智,王树立,陈文博(231)

监察·管理

- 风险预控管理在保德煤矿的应用 任占昌(234)
基于积极管理理念的煤矿安全管理体系 杨联合,邢顶门,申霞(237)
基于PDCA模式的煤矿应急能力评价指标体系 王璐,李树刚,成连华,张良(241)
基于SD的矿工不安全行为干预模型仿真 田水承,李广利,李停军,张恒,李磊(245)

SAFETY in COAL MINES

Monthly (Started in 1970)

August 2014

Vol.45, No.8 (Total 479)

Competent Authority

CCTEG Shenyang Research Institute

Sponsor

CCTEG Shenyang Research Institute

Chief Editor LUO Hai-zhu

Deputy Chief Editor LIANG Shao-quan

Editorial Director WANG Fu-hou

Advertisement & Distribution LIU Ming-zhi

Publisher Editorial Office of
《SAFETY in COAL MINES》

Address No.11 of Binhe Road, Fushun
Economic Developing-area, Liaoning, China

Post code 113122

Tel 86-24-56616988 56616987
56616981 56613526

E-Mail mkaq@163.com
mkaqgg@163.com(advertisement)

Website www.mkaqzz.com

Issuer Public Offering

Subscribe(to) Editorial Office of 《SAFETY in
COAL MINES》 or Local Post Offices

Postal Distribution Code 8-293

Printed by Offset Printing Factory of
Fushun Branch of CCRI

Periodical Registration No. ISSN 1003-496X
CN 21-1232/TD

Business License No. 210400000026129

Trademark Registered Certificate No.1144537

Publishing Date August 20

Price 18 yuan

Beijing Liaison Office of Editorial Committee 86-10-64464228

Advertisement Agency Beijing Jiacheng Heli
Advertisemeng CO., Ltd.
86-10-88482879

CONTENTS

Test · Research

- Research on High Rank Coalbed Methane Recovery Prediction Method and Drainage Process Optimization
WU Xiuping(1)
- Research on Effects of Blasting Vibration of Two Different Properties of Explosives
ZHANG Yuanjuan, HUANG Jinxiang, ZHAO Xiang, FENG Yusong(5)
- Measurement of Effective Drainage Radius Based on Primitive Gas Content and Pressure for Slotted Drilling
LIU Ting, LIN Baiquan, ZOU Quanle, SHEN Chunming, ZHANG Zhen, YANG Wei(8)
- Research on Coal and Gas Outburst Features and Causes in Hebi Mining Area
GONG Chunsheng, ZHANG Mingjie, TIAN Jiajia(12)
- Experimental Research on Critical Value of Outburst Danger Prediction Index for Ding6 Coal Seam in No. 1 Coal Mine of Pingdingshan Tian'an Coal Company
ZHANG Jinjing, WEI Fengqing, LIU Shaobo, ZHAO Guodong(16)
- Research on Pulsating Gas Drainage Way
WANG Zhenping,
WU Linfeng, ZHANG Hua, WEN Hu, WANG Weifeng, MENG Qinghua, CHEN Junwei(20)
- Research on New Flexible Paste Borehole Sealing Material for Gas Drainage Drilling
XIANG Xianwei, ZHAI Cheng, LI Min, PENG Shen, YU Xu(23)
- Experimental on Low-temperature Oxidation Mechanism of Coal Based on Oxygen Consumption
YAO Yanna, WANG Junfeng, WU Jianming, ZHANG Ping(27)
- Experimental and Analysis of Pressure-gas Ejecting Orifice Dust Collector
YE Yaodong, CHENG Heyu, SHENG Huaxing, WANG Zhuliang(31)
- Research on Gas-geology Law of J₁₅ Seam in No.12 Mine of Pingdingshan
GAO Jiancheng, ZHANG Yuzhu, LYU Youchang, SUN Juzheng(35)
- Research on Reasonable Sealing Hole Depth of Extraction Borehole Based on Drilling Cuttings Theory
SHEN Hongmin, MAO Taoliang, ZHANG Leilin, YIN Hai, YUAN Guangming, YU Zhijin(39)
- Research on 90 ° Elbow Pressure Drop in Gas-water Mist Transportation Pipeline
LIU Zhichao, XIE Hechao, HAO Jingjing, LI Yanbo(42)
- Forecast on Development Height of Water Flowing Fractured Zone Based on Support Vector Machine
TAN Xipeng, SHI Longqing, WANG Juan, JI Xiaokai, JING Xing, XING Tongju, LIU Yun(46)
- Research on Gas Drainage Roadway Layout for Outburst Coal Seam Floor Rock
WANG Huiyue(50)
- Research on Reasonable Location of Outward Staggered Arrangement at Simultaneously Mining Working Face Crossheading in Close Distance Coal Seams
DU Feng(53)
- Research on Deformation Laws of Uncovering Coal in Inclined Shaft Based on FLAC^{3D}
ZHAO Weiguo(57)
- Law of Surface Movement and Overburden Failure for Paste Filling Fully Mechanized Mining
LI Xingli(60)
- Strata Behavior Law at Fully Mechanized Mining Face in Close Coal Seams
MENG Long, GAO Zhaoning(64)
- In-situ Measurement Study on Stress and Temperature of Frozen Outer Shaft Lining in Western Cretaceous Strata
XI Jiami, QU Yonglong, YANG Gengshe, CHEN Xinnian, LI Borong(68)
- Evolution Law of Caving and Fractured Zone in Underground Mining with L-shaped Working Face
WANG Jia, SUN Shiguo(72)

Technology · Innovation

- Prevention and Control Technology of Gas Accumulation for Technique Roadway at Upper Corner of Fully Mechanized Working Face in Thick Coal Seam
KANG Huaiyu, ZHOU You(76)
- Gas Control Technology for Gassy Close Coal Seam Group Mining Face Under Complex Geological Conditions
DENG Zhigang, WANG Dong(79)
- Directional Control Technology of Coal Spontaneous Combustion in Goaf of Fully Mechanized Caving Face
LI Weimin, DONG Qinliang, NING Hongjin, SHI Guoqing(81)
- Application of Air Turbine Refrigeration Technology in Cooling of Heading Face
LI Tong suo, HE Qilin(85)
- Heat Damage Control Technology in More Than 1 000 m Deep Mine
LUO Wei, SONG Xuanmin, LIU Cheng(88)
- Rock Burst Control Technology for Deep Seam Mining with High Burst Dangerous in Jixian Coal Mine
WANG Chuanpeng, WANG Yuanjie, CHEN Fabing(92)
- Mining Technology for Floor Undulating Section at 1201 Fully Mechanized Caving Face in Shanzhai Mine
MA Lianhui(95)
- Support Technology of Large Section Open-off Cut in Daxi Coal Industry
GUO Jinheng(98)
- Caving Technology Under Condition of Igneous Rock Invading in Face
CHI Zhanguo(101)
- Gob-side Entry Retaining with Part of Wall in Roadway Technology for Xieqiao Mine
ZHANG Pengchong, ZHANG Nong, JI Weibin(104)

Design · Development

- Gas Abnormal Emission Dynamic Response Mechanism Based on Monitoring System
MA Lijuan(107)
- Application of Blackstar EM-MWD in Air Down-hole Hammer Drilling
SHI Haiqi(110)
- Circuit Design of Portable Mine Infrared Methane Detector
YUAN Benyin, QU Baowei(114)
- Design of Portable Wireless Methane Alarm Detector
WANG Wei(117)
- Transform of Varing Frequency Energy Conservation of Coal Mine Fan
TANG Shuo(119)
- Multi-level Automation Drainage Control System for Mine
YANG Xiaohui(122)
- Design of Water Seal Fire Barriering and Explosion Venting Devices with Automatic Water Level Control Type
RONG Jia, HU Shuangqi, ZHOU Wen, LEI Wu(126)



煤科集团沈阳研究院
有限公司

系列产品

- ◆ 紧急避险系统
- ◆ 煤矿安全生产监控系统及人员定位系统
- ◆ 煤矿瓦斯抽放配套装备
- ◆ 矿井通风防灭火装备
- ◆ 煤矿瓦斯基础参数测定仪器
- ◆ 矿山救护装备
- ◆ 低压供电系统配套装备
- ◆ 矿用钻机及配套装置
- ◆ 露天矿卡车调度系统及边坡监测装备
- ◆ 模拟仿真训练系列

立足服务

保障安全

依靠创新

共同发展

WWW.SYCCRI.COM

辽宁 抚顺 经济开发区滨河路11号
T 024-56616909 F 024-56616800

辽宁 沈阳 东滨河路108号
T 024-24117298 F 024-24117568



Fault Section Location of Single-phase Grounding in Coal Mine Power Supply System

WANG Zhijie,WANG Yanwen,LI Bo(129)

Safety Training Management Information System for Muchengjian Coal Mine

ZHAO Hongze,BAI Yuqi,YANG Fuqiang,ZHAO Boshen,SUN Jiandong,YANG Zhao,LI Zequan(133)

Key Technology of Living Environment in Coal Mine Refuge Chamber

QIU Tiande(136)

Design of Personnel Locator Based on Coal Mine Personnel Positioning System

LI Xiaogang(139)

Fixed Frame Format Data Processing for Hydraulic Support Based on Rough Set and VC

HU Bo,LIAN Zisheng(142)

A Three-dimensional Visualization Prediction Method for Surface Deformation in Mining Area

GUO Xiantao,HUANG Teng,ZHANG Rongchun,MAO Yufeng,QIU Zhiwei(145)

Application of Monorail Transport System in Datun Mining Area

ZHU Gaopeng,LI Panpan,WU Zongwei,TAN Jianhua(148)

Application·Practice

Application of Pit Through Drilling and Tracking Analysis Method in Geological Tectonic Belt of

Outburst Coal Seam

SONG Ziliang,WANG Xuemin,YAO Wei,WANG Jiyu,MA Xiaofei(151)

Outburst Prevention Technique for Small Angle Long Distance Uncovering Coal in Haulage Dip of West

Wing of Anshun Coal Mine

WANG Haishan,ZHANG Baodong,LIU Yang(154)

Spontaneous Combustion Characteristics of Coal Seam Associated Huge Oil Shale in Yilan Mining Area

WANG Zhengzhong(156)

Application of Isotope Radon Measurement in Detection of Coal Mine Fire Location

AN Shigang,SUN Yong,WANG Shidong,WANG Gang,ZHANG Depeng(159)

Rapid Positioning and Controlling for Spontaneous Combustion Zone in Close Distance Coal Seams of

Renlou Mine II₁ Mining Area

LIU Yiping,CAO Kai(162)

Application of Hollow Grouted Anchor Cable in Track Uphill Repair

JI Weibin(165)

Analysis·Discussion

Discussion on Gas Emission Prediction Method in Adjacent Layer of Fully Mechanized Caving Face

LI Deyang(169)

Prediction Method of Gas Emission Based on Multi-source Information Fusion

DI Zhiqiang(172)

Prediction for Coal and Gas Outburst in Working Face Based on Drilling Crumb Composite Index

LIU Yongqian,DENG Zhigang,ZHANG Lang(175)

Influence Factors Analysis of Coal Seam Gas Pressure Based on Principal Component Analysis

WANG Yongjing(179)

Causes and Countermeasures of Spontaneous Combustion in Oil Shale Seam of Haishiwan Mine

WANG Junde(183)

Discussion on Prevention and Cure of Coal Mine Internal-caused Fire for Qitaihe Branch

HAN Yulong(186)

Analysis on Water Inrush Condition of S1210 Working Face in Ningtiaota Coal Mine

JI Zhongkui(188)

Monitoring and Analysis on Shaft Freezing Temperature Field of Cretaceous Water-rich Bedrock in Xinzhu-

ang Coal Mine

LIANG Bo,XI Jiami,CHEN Xinnian,YANG Gengshe,LI Borong,QU Yonglong(192)

Cause Analysis for Roof Water Inrush Accident at Fully Mechanized Caving Face in Zhaojin Coal Mine

LING Zhiqiang,DENG Jun,FENG Wulin,YANG Peng(196)

Prediction and Evaluation of Water Abundance of Sandstone Aquifer in Wolonghu Coal Mine

PENG Tao,XUAN Liangrui,ZHANG Haichao,LIU Wenwu(199)

Pore Structure Analysis of Coal with Different Coal Structure Based on CT Technology

ZHANG Xiaohui,KANG Zhiqin,YAO Huifang,LI Wei(203)

Top Coal Falling Characteristics of II₃₂ Seam in Zhalaonu Mining Area

WAN Feng,ZHANG Hongqing,HAN Zhenguo,SHAO Xiaofeng(207)

Adaptability Analysis of Hydraulic Support for Thick Coal Seam with Large Mining Height

LI Huaibin,WANG Wen,FENG Min,LU Xiaowei,CHEN Pengyu(210)

Top-coal Arching Mechanism and Control Technology in Fully-mechanized Caving Mining

WANG Aiguo(214)

Analysis on Roadway Roof Separation Early Warning Threshold Value for Large Section and Thick Top

Coal

ZHANG Lihai(217)

Movement Laws of Rock Arch Collapse Under Condition of Thick Loose Seam with Large Mining Height

WANG Yinbao(221)

Deformation and Failure of Roadway in Deep Mine

REN Zhicheng,YANG Shengli,KONG Dezhong(224)

Calculating Methods Review for Clay Content

XU Yanyong,XUE Qiankun(228)

Roof Control for Irregular Working Face in Yujialiang Coal Mine

ZHAO Ke,ZHANG Kaizhi,WANG Shuli,CHEN Wenbo(231)

Supervision·Management

Application of Risk Control Management in Baode Coal Mine

REN Zhanchang(234)

Coal Mine Safety Management System Based on Concept of Active Management

YANG Lianhe,XING Dingmen,SHEN Xia(237)

Assessment Index System of Coal Mine Emergency Ability Based on PDCA Model

WANG Lu,LI Shugang,CHENG Lianhua,ZHANG Liang(241)

Simulation on Miners' Unsafe Behavior Intervention Model Based on SD

TIAN Shuicheng,LI Guangli,LI Tingjun,ZHANG Heng,LI Lei(245)

CJZ4Z钻孔汇流管瓦斯综合参数测定仪



产品简介

CJZ4Z钻孔汇流管瓦斯综合参数测定仪是针对煤矿钻孔瓦斯抽采计量监测需要而开发的专用在线仪器，完全符合《煤矿瓦斯抽采达标暂行规定》第十六条的要求，安装在单个钻孔或多个钻孔汇流管监测瓦斯抽采参数，为区域评价抽采达标提供准确依据。本仪器根据钻孔抽采计量的特点开发，具有**超低流量检测**（可低至3L/min的流量）、**精度高、响应时间快、功耗低、工作稳定**等特点，具备良好的**抗水汽和粉尘能力**。

性能特征

- 在线实时测量**甲烷浓度、流量、管道压力、管道气体温度**，尤其适合**超低流量**的检测（可最低至3L/min的流量）。
- 独特的测量技术确保仪器能在**含水、含尘、负压变化大**和**气体成分复杂**的瓦斯抽采单孔管道长期可靠工作。
- 采用**全通式结构，几乎没有阻力**。
- 具有**瞬时混合流量、瞬时纯流量、甲烷浓度、负压、温度、总量、纯总量、日累积量、日累积纯量、管径、气体流向、日期、时间、工况百分比**等就地实时同屏显示。

地址：国家郑州高新技术产业开发区长椿路十号

邮编：450001

电话：0371-67858887

传真：0371-67991111

免费服务电话：400-0057-577

E-mail: info@gltech.cn

Http://www.gltech.cn