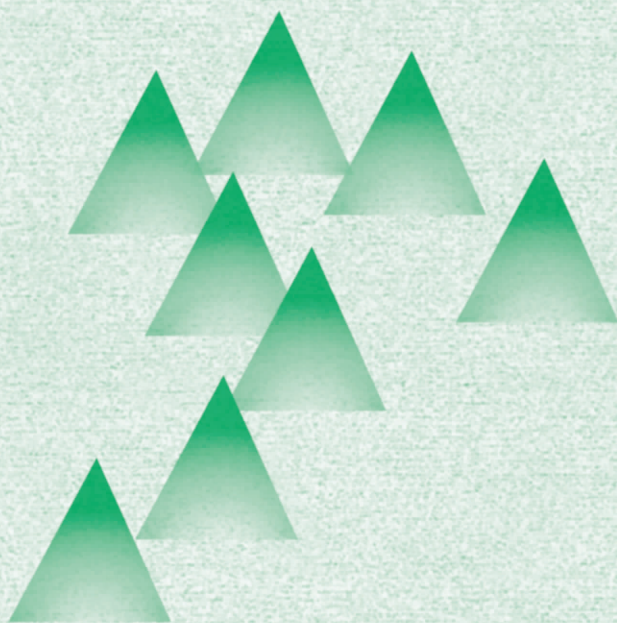


南方人口



南方人口
(双月刊)

第 35 卷第 4 期
(总第 160 期)



2020 年 8 月出版

目 录

人口与社会

- 户籍类型与城乡居民医疗服务利用
——基于 Andersen 模型的经验分析 朱凤梅 (1)
- 广东省劳动年龄人口变动特征及其成因分析
..... 解 韬 任拓宇 (17)
- 城市人口管理组织化：基于集体户口的认识
..... 李 萌 陈金永 张 力 (28)

人口流动

- 户籍地禀赋与流入地融合
——流动人口定居意愿影响因素研究 李 升 苏润原 (41)

人口地理

- 珠江—西江经济带人口分布时空演化规律及影响因素分析
..... 蒋团标 朱本慧 刘一笑 (57)

老年人口

- 农村老年人老化态度变动轨迹：基于积极老龄化框架的实证考察
..... 乐 章 秦习岗 (68)

[期刊基本参数] CN44-1114/C * 1986 * q * 19 * 73 * zh * p¥8.00 * 2800 * 13 * 2020-4

SOUTH CHINA POPULATION (BIMONTHLY)

No.4, 2020 (Holistic Serial No. 160)

CONTENTS

The Household Registration Type and the Health-care Utilization of Urban and Rural Residents:
Empirical Analysis Based on Anderson Model *ZHU Feng-mei* (1)

An Analysis of the Characteristics and Causes of the Working-age Population Changes in
Guangdong Province *XIE Tao REN Tuo-Yu* (17)

Systematization of Urban Population Management: An Perspective of the Collective Hukou
Registration *LI Meng CHAN Kam Wing ZHANG Li* (28)

Endowment and Integration: A Study of the Factors Influencing the Settlement Intention of the
Floating Population *LI Sheng SU Run-yuan* (41)

Analysis on the Spatial and Temporal Evolution of Population Distribution and Its Influencing
Factors in the Pearl River-Xijiang river Economic Belt
..... *JIANG Tuan-biao ZHU Ben-hui LIU Yi-xiao* (57)

The Trajectory of Rural Elders' Attitudes toward Aging: An Empirical Study Based on the
Framework of Active Aging *YUE Zhang QIN Xi-gang* (68)