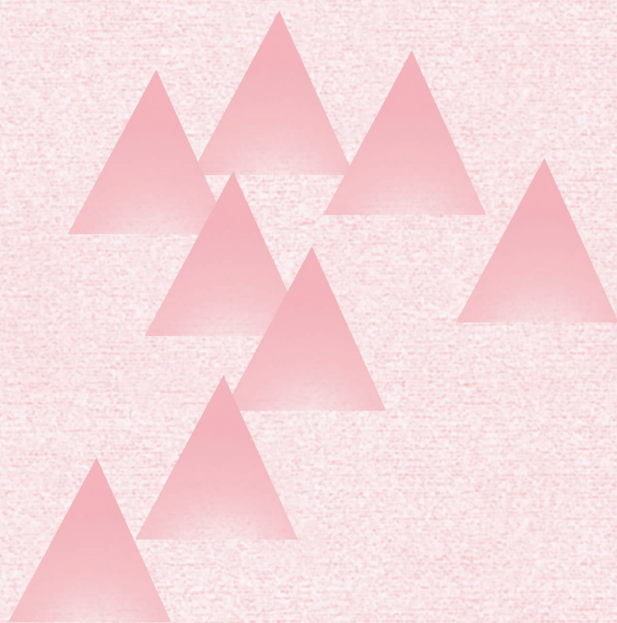


南方人口



南方人口
(双月刊)

第36卷第1期
(总第163期)

目 录

流动人口

地方品质与经济机会对劳动力流动的影响

——基于 CLDS2016 的实证分析 张 超 陈 思 (1)

子女随迁是否有助于改善进城农民的营养摄入?

..... 何志鹏 余 康 刘 强 李 雷 (17)

流动人口群体特征变动与失业风险差异 杨胜利 姚 健 (31)

人口与社会

父母与公婆之间的权衡:

农村女性家庭权力与养老资源的分配 薛天山 李巧敏 (43)

老年人口

福利多元主义视角下城市“老漂族”精神赡养问题研究

——以广州市三个典型社区为例 张国英 赖依阳 刘业青 (57)

正式照料抑或非正式照料:

照料模式对高龄老人临终照料成本的影响 张韵 陆杰华 (67)



2021 年 2 月出版

[期刊基本参数] CN44-1114/C * 1986 * q * 19 * 73 * zh * p¥8.00 * 2800 * 13 * 2021-1

SOUTH CHINA POPULATION (BIMONTHLY)

No.1, 2021 (Holistic Serial No. 163)

CONTENTS

The Impact of Quality of Place and Economic Opportunity on Labor Flow: An Empirical Analysis Based on CLDS 2016 *ZHANG Chao, CHEN Si* (1)

Can the Migration of Children with their Parents Improve the Nutritional Intake of Migrant Workers? *HE Zhi-peng, YU Kang, LIU Qiang, LI Lei* (17)

A Study of the Change of Floating Population's Characteristics and the Differences in Their Unemployment Risk *YANG Sheng-li, YAO Jian* (31)

Between the Parents and the Parents-in-Law: The Female Power and the Elderly-support Resources Allocation in the Families *XUE Tian-shan Li Qiao-min* (43)

An Empirical Study on the Supply and Demand of Spiritual Support for the Floating Elderly in Cities: A Analysis of 3 Typical Communities in Guangzhou
..... *ZHANG Guo-ying, LAI Yi-yang, LIU Ye-qing* (57)

Formal Care or Informal Care: The Impacts of Different Care Modes on The Cost of Care for the Dying Oldest-Old *ZHANG Yun , LU Jie-hua* (67)