

Medical Science Journal of Central South China

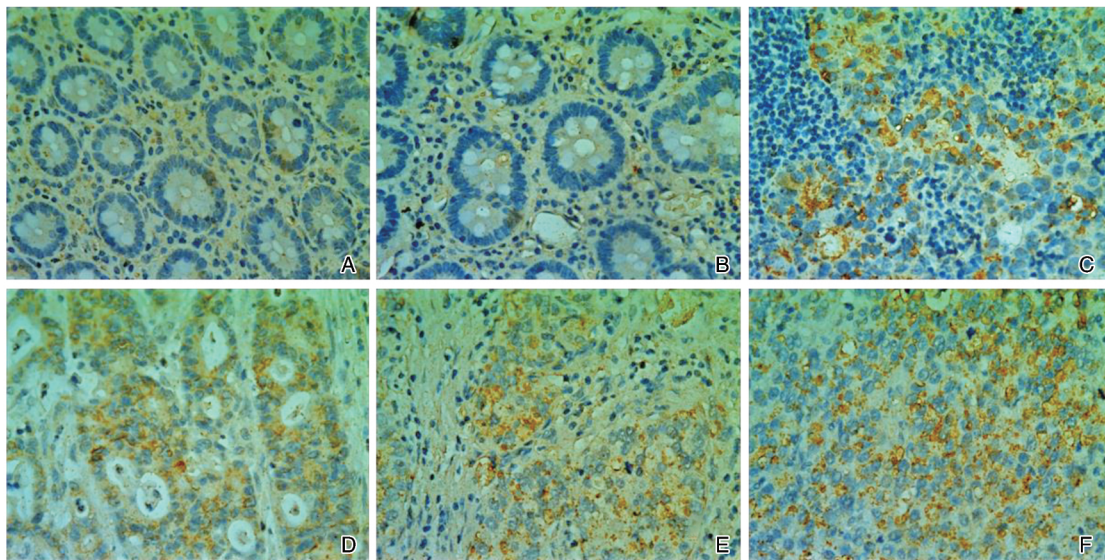
中南医学科学杂志

Zhongnan Yixue Kexue Zazhi

GRP78蛋白在胃癌中的表达及作用

李素云¹, 袁靖哲², 李玄³, 孟星圻¹, 刘轩⁴, 邓靖², 贺修胜³

(南华大学衡阳医学院 1.应用解剖与生殖医学研究所, 2.临床医学专业, 3.肿瘤研究所,
4.预防医学专业, 湖南省衡阳市 421001)



ISSN 2095-1116



2021年11月

第6期
第49卷

中南医学科学杂志

ZHONGNAN YIXUE KEXUE ZAZHI

双月刊

1973 年创刊

第 49 卷第 6 期

2021 年 11 月出版

主 管

湖南省教育厅

主 办

南华大学

学术支持单位

衡阳市中心医院

编辑出版

《中南医学科学杂志》编辑部

地址：湖南省衡阳市，南华大学内

邮政编码：421001

电话：0734-8160781

E-mail: znyxkzz@vip.163.com

网址: http://nhqks.cnjournals.com/yx/

主 编

文格波

副主编

吴移谋 姜志胜

雷小勇 容益康

编辑部主任

李小玲

广告经营许可证号

4304047440022

印 刷

长沙市和一印刷设备有限公司

发 行

国内：中国邮政集团公司湖南省报刊发行局

国外：中国国际图书贸易集团有限公司

(中国北京 399 信箱,100044)

订 购

全国各地邮局

邮发代号：国内 42-396

国外 Q4353

邮 购

《中南医学科学杂志》编辑部

定 价

每期 10 元,全年 60 元

国际标准连续出版物号

ISSN 2095-1116

国内统一连续出版物号

CN 43-1509/R

本刊若有印刷和装订质量问题，
请向编辑部对换。

目 次

· 基础医学 ·

- 间质蛋白 Periostin 高表达对鼻咽癌 6-10B 细胞凋亡的影响及可能机制
..... 肖萍, 李通, 杨晓玉, 李美香(621)
- GRP78 蛋白在胃癌中的表达及作用
..... 李素云, 袁靖哲, 李玄, 孟星圻, 刘轩, 邓靖, 贺修胜(626)
- 核酸适配体修饰聚酰胺-胺负载 5-氟尿嘧啶纳米给药体系的制备表征
及体外抗肝癌作用
..... 欧阳湖, 宁玲, 陈思维, 贺冬秀, 王肖, 何健, 谢伟全(630)
- 二氢杨梅素通过 PI3K/Akt 信号通路调节巨噬细胞极化抑制卵巢癌
细胞的侵袭 谭武鹏, 谭雄, 伍菊花(636)

· 临床医学 ·

- 呼吸道病毒和炎症因子与热性惊厥发病的相关性
..... 刘受祥, 叶晓敏, 张敏艳, 杨德云, 彭慧, 颜丽娟(640)
- 腹型过敏性紫癜发生消化道出血患儿 HP 感染及免疫反应分析
..... 张强, 田文朋(644)
- 血清 miR-21-3p 表达对脓毒症心肌损伤的早期诊断价值
..... 魏丹, 金晶, 柳梅, 赵娟(648)
- 甲状腺功能亢进症合并骨质疏松患者自身免疫与细胞炎症因子水平
的相关性 尚靖智, 王菲, 邢清, 段丽萍, 张国民(652)
- 艾司氯胺酮联合盐酸罗哌卡因对分娩镇痛及产后抑郁的影响
..... 黄子娟, 王志萍, 梁宵(655)
- 血浆环状 RNA hsa_circ_0004812 在 HBV 相关性肝癌中的诊断价值
..... 郭靓, 赵鑫, 强雪芹(659)
- 复方 α -酮酸片联合血液透析滤过治疗 CKD-MBD 及其生存危险
因素分析 王荣忠, 刘思佳(664)
- 晚期 NSCLC 组织巨噬细胞表面 Tim-3 表达与临床特征和预后的关系
..... 籍强, 吕骏卿, 赵鑫, 荣伟强(668)
- 能谱 CT 最佳单能量成像联合 ASIR 技术对子宫动脉图像质量的优化
..... 屈亚林, 陶廷婷(672)
- 单侧旁正中切口 TLIF 术对手术侧与非手术侧椎旁肌肉的影响
..... 董雪刚, 崔仕贵, 王凯(676)
- 阴道分娩后尿潴留风险预测模型的构建 蒋艳丽, 黄芝圃(680)

老年骨质疏松症合并肌少症患者营养状态及血清生物化学指标的变化
 周飞, 富晓旭, 高鸿(683)

血清糖类抗原 125 在慢性房颤并发 HFpEF 诊断和预后评估中的意义
 崔泽岩, 刘晓娟, 刘树理, 臧艳静, 孙倩, 赵卫东(687)

前列腺癌患者 Hedgehog 信号通路相关蛋白的表达及其临床意义
 张建坤, 张航, 钱亚娜, 李业山, 董立军(691)

CDX2、HNF4 α 、SOX2 蛋白联合检测对幽门螺杆菌感染相关高危胃癌的诊断价值
 吴丹, 曹司, 黄坤(695)

小儿支气管炎患者血清 25(OH)D₃ 水平与 Th17/Treg 相关细胞因子的关系
 刘秀平, 袁林, 苏伟(699)

康复新液联合替硝唑含漱液对固定正畸牙龈炎患者牙周菌群的影响
 王密, 薛慧, 李健(703)

血清 PA、ALP、HCY 和 sdLDLC 联合诊断急性脑梗死的临床价值
 马伟杰, 王新兰, 徐文武, 汪昆(707)

妊娠期高血压患者凝血指标及血栓弹力图指标的变化及其临床意义
 曾木兰, 郭晓燕(710)

BIS 监测下丙泊酚闭环靶控输注麻醉在腹腔镜全子宫切除术中的应用
 王颖, 张玲, 吕宝胜, 李占军(713)

玻璃体腔注射雷珠单抗联合 577 nm 眼底激光治疗视网膜静脉阻塞继发黄斑水肿的临床疗效
 颜坚, 蔡玉莲, 邓江涛, 张涛(717)

血清 BDNF 与颅脑损伤患者病情及预后的相关性分析 秦维, 王妹妹, 吴海珠(721)

血清 PTH、Hcy、TPO-Ab 与妊娠期高血压患者病情严重程度的关系
 曹阳, 曹晨, 万小丹(725)

NBI 放大内镜、染色内镜及白光内镜在结直肠微小息肉中的诊断差异
 周李平, 杨雯, 陈彦(728)

• 流行病学研究 •

基于 ARIMA 模型的非伤寒沙门菌发病率趋势预测 程颖, 田滢(731)

福州社区糖尿病视网膜病变发生预测模型的构建 曾劼, 朱锐(735)

• 文献综述 •

PI3K/Akt 信号通路与女性相关恶性肿瘤关系的研究进展 刘琴, 吴丹, 胡华, 周建斌(738)

全内技术重建前交叉韧带的研究进展 杨冬冬, 曾伟, 刘荆陵(741)

• 2021 年第 49 卷中文总目次 • 1 •

Medical Science Journal of Central South China

Bimonthly, Established in 1973

Volume 49, Number 6

November, 2021

Responsible Institution

Department of Education of
Hunan Province

Sponsoring Institution

University of South China

Academic Support Unit

Central Hospital of Hengyang

Editor and Publisher

Editorial Staff of Medical
Science Journal of Central
South China
University of South China,
Hengyang, Hunan 421001, China
Tel: 0734-8160781
E-mail: znyxkzz@vip.163.com
http://nhqks.cnjournals.com/yx/

Editor-in-chief

WEN Gebo

Associate Editor-in-chief

WU Yimou JIANG Zhisheng
LEI Xiaoyong RONG Yikang

Managing Director

LI Xiaoling

Printing

Changsha Heyi Printing Equipment
Co., Ltd.

Overseas Distributor

China International Book
Trading Corporation
P. O. box 399, Beijing, China
Code No. Q4353

Domestic Subscription

Post Office, China
Code No. 42-396

Mail-Order

Editorial Staff of Medical
Science Journal of Central
South China

CSSN

ISSN 2095-1116
CN 43-1509/R

Price

¥ 10.00

This issue was edited by
JIANG Xianglian

CONTENTS

• BASIC MEDICINE •

- Effect of high expression of Periostin on nasopharyngeal carcinoma 6-10B cell apoptosis and its possible mechanism
..... XIAO Ping, LI Tong, YANG Xiaoyu, LI Meixiang (621)
- The expression and role of glucose regulated protein 78 in gastric cancer
..... LI Suyun, YUAN Jingzhe, LI Xuan,
MENG Xingqi, LIU Xuan, DENG Jing, HE Xiusheng (626)
- Fabrication and characterization of aptamer modified polyamide-amine loaded 5-fluorouracil drug delivery system for hepatocellular carcinoma therapy in vitro
..... OUYANG Hu, NING Ling, CHEN Siwei,
HE Dongxiu, WANG Xiao, HE Jian, XIE Weiquan (630)
- Dihydromyricetin inhibits invasion of ovarian cancer cells by regulating macrophage polarization through PI3K/Akt pathway
..... TAN Wupeng, TAN Xiong, WU Juhua (636)

• CLINICAL MEDICINE •

- Analysis of Helicobacter pylori infection and immune response in children with abdominal anaphylactoid purpura ZHANG Qiang, TIAN Wenpeng (640)
- Correlation between respiratory viruses and inflammatory factors in the pathogenesis of febrile seizures LIU Shouxiang, YE Xiaomin,
ZHANG Minyan, YANG Deyun, PENG Hui, YAN Lijuan (644)
- The value of serum miR-21-3p expression in the early diagnosis of myocardial injury in sepsis WEI Dan, JIN Jing, LIU Mei, ZHAO Juan (648)
- Correlation between autoimmune indexes and cytokine levels in patients with hyperthyroidism complicated with osteoporosis SHANG Jingzhi,
WANG Fei, XING Qing, DUAN Liping, ZHANG Guomin (652)
- Effects of esketamine combined with ropivacaine on labor analgesia and postpartum depression HUANG Zijuan, WANG Zhiping, LIANG Xiao (655)
- Plasma circular RNA hsa_circ_0004812 is a diagnostic biomarker for hepatitis B virus-related hepatocellular carcinoma
..... GUO Liang, ZHAO Xin, QIANG Xueqin (659)
- The effect of compound α -ketoacid tablet combined with hemodiafiltration in the treatment of CKD-MBD patients and the analysis of risk factors for survival
..... WANG Rongzhong, LIU Sijia (664)
- Correlation between Tim-3 on the surface of TAM and pathological features and prognosis in advanced NSCLC patients
..... JI Qiang, LYU Junqing, ZHAO Xin, RONG Weiqiang (668)
- Optimization of uterine artery image quality by energy spectral CT optimal single energy imaging combined with ASIR technique
..... QU Yalin, TAO Tingting (672)

| | |
|---|---|
| Effects of unilateral paramedian incision TLIF on the paravertebral muscles of surgical side and nonsurgical side | <i>DONG Xuegang, CUI Shigui, WANG Kai</i> (676) |
| Establishment of the risk prediction model of urinary retention after vaginal delivery | <i>JIANG Yanli, HUANG Zhipu</i> (680) |
| Changes of nutritional status and serum biochemical indicators in elderly patients with osteoporosis complicated with sarcopenia | <i>ZHOU Fei, FU Xiaoxu, GAO Hong</i> (683) |
| Significance of serum carbohydrate antigen 125 in diagnosis and prognosis of chronic atrial fibrillation complicated with HFpEF | <i>CUI Zeyan, LIU Xiaojuan, LIU Shuli, ZANG Yanjing, SUN Qian, ZHAO Weidong</i> (687) |
| Correlation of Hedgehog signaling pathway related proteins with clinical significance and prognosis in prostate cancer | <i>ZHANG Jiankun, ZHANG Hang, QIAN Yana, LI Yeshan, DONG Lijun</i> (691) |
| Diagnostic value of combined detection of CDX2, HNF4 α and SOX2 protein in high risk gastric cancer associated with Helicobacter pylori infection | <i>WU Dan, CAO Si, HUANG Kun</i> (695) |
| The relationship between the level of 25(OH)D ₃ and Th17/Treg related cytokines in children with bronchitis | <i>LIU Xiuping, YUAN Lin, SU Wei</i> (699) |
| Effect of Kangfuxin solution combined with Timidazole gargles on periodontal flora in patients with gingivitis in fixed orthodontics | <i>WANG Mi, XUE Hui, LI Jian</i> (703) |
| Clinical value of serum PA, ALP, HCY and sdLDL-C in the diagnosis of acute cerebral infarction | <i>MA Weijie, WANG Xinlan, XU Wenwu, WANG Kun</i> (707) |
| Changes and clinical significance of coagulation index and thromboelastogram index in patients with gestational hypertension | <i>ZENG Mulan, GUO Xiaoyan</i> (710) |
| Application of closed-loop target controlled infusion anesthesia of propofol under BIS monitoring in laparoscopic hysterectomy | <i>WANG Ying, ZHANG Ling, LYU Baosheng, LI Zhanjun</i> (713) |
| Clinical efficacy of intravitreal injection of Lucentis combined with 577 nm fundus laser on macular edema secondary to retinal vein occlusion | <i>YAN Jian, CAI Yulian, DENG Jiangtao, ZHANG Tao</i> (717) |
| Correlation analysis between serum BDNF and the condition and prognosis of patients with craniocerebral injury | <i>QIN Wei, WANG Meimei, WU Haizhu</i> (721) |
| The relationship between serum PTH, Hcy and TPO-Ab and the severity of hypertension in pregnancy | <i>CAO Yang, CAO Chen, WAN Xiaodan</i> (725) |
| Comparison of NBI magnifying endoscopy, staining endoscopy and white light endoscopy in the diagnosis of colorectal micro polyp | <i>ZHOU Liping, YANG Wen, CHEN Yan</i> (728) |

• **EPIDEMIOLOGICAL STUDIES** •

| | |
|---|------------------------------------|
| Prediction of incidence rate of nontyphoidal salmonella based on ARIMA model | <i>CHENG Ying, TIAN Ying</i> (731) |
| Prediction model construction of diabetic retinopathy in Fuzhou community | <i>ZENG Qing, ZHU Rui</i> (735) |

• **LITERATURE REVIEW** •

| | |
|---|--|
| Research progress on the relationship between PI3K/Akt signaling pathway and female-related malignant tumors | <i>LIU Qin, WU Dan, HU Hua, ZHOU Jianbin</i> (738) |
| Research progress of all-inside technique anterior cruciate ligament reconstruction | <i>YANG Dongdong, ZENG Wei, LIU Jingling</i> (741) |