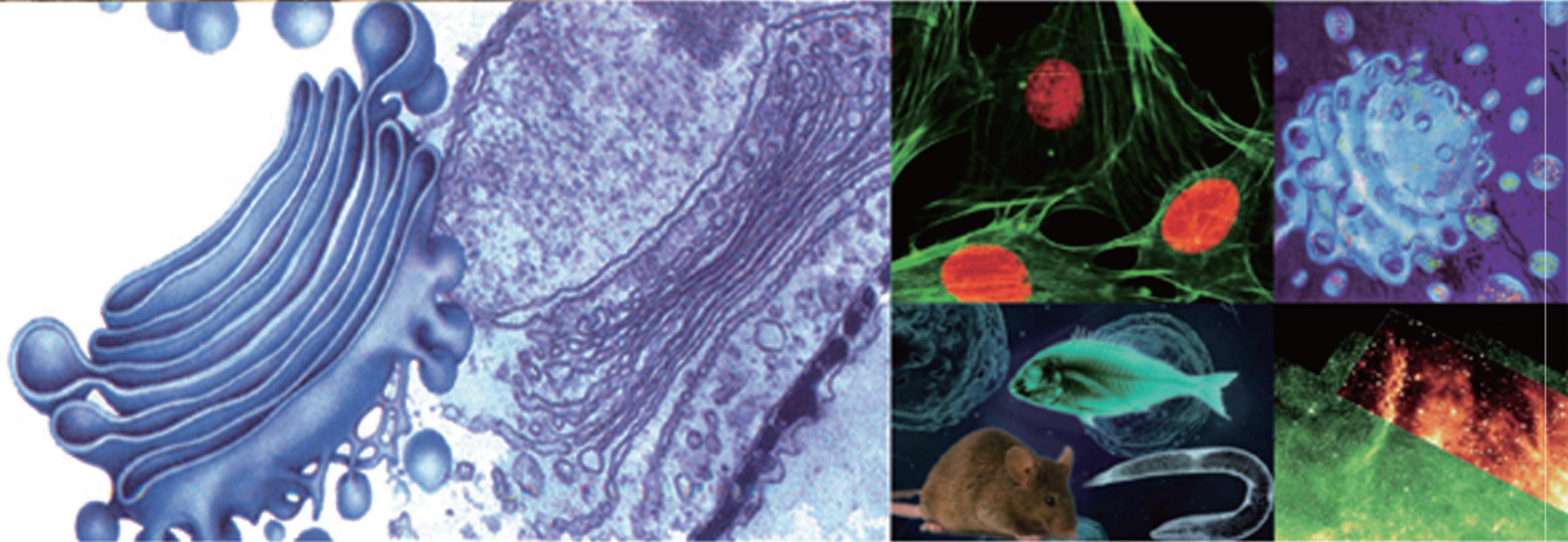




CODEN DDXYA5 ISSN 1671-6264  
CN 32-1647/R



JOURNAL OF SOUTHEAST  
UNIVERSITY  
(Medical Science Edition)

Dongnan Daxue Xuebao (Yixueban)

# 东南大学学报

医学版 中国科技核心期刊  
中国科技论文统计源期刊

RCCSE 中国核心学术期刊(A)  
中文核心期刊

第36卷 第5期  
Vol. 36 No. 5

2017 5

# 东南大学学报(医学版)

2017年10月25日 第36卷 第5期(总第165期)

## 目次

### · 论 著 ·

- 药理学参数在晚期非小细胞肺癌紫杉醇化疗指导方案中的运用 ..... 沈波,武渊,彭伟,等(681)
- 广西地区壮族和汉族血小板捐献者 HLA 基因多态性的初步分析 ..... 裴永峰,李恒聪,何宁宇,等(686)
- 共刺激基因工程细胞共培养的细胞因子诱导的杀伤细胞对 HepG2. 2. 15  
细胞中乙肝病毒的抑制作用研究 ..... 蒋文秀,王利利,叶伟,等(693)
- 新生儿三重酸碱失衡影响因素及临床分析 ..... 顾昊,卢典,卢屹峰,等(698)
- CB6 在糖尿病肾病患者肾组织中的表达及调控Wnt / $\beta$ -catenin 信号通路  
对人肾小管上皮细胞增殖凋亡的实验研究 ..... 韩昕健,郝伟,孙秀燕,等(704)
- 超声四维应变成像技术预测冠心病患者 PCI 术后左室心肌功能改善的  
研究 ..... 李云,李华,胡劼(710)
- 声脉冲辐射力成像技术对慢性肾病分期的诊断价值 ..... 王慧芬,张周龙,李新(717)
- 培美曲塞与铂类化疗药联合使用对晚期肺腺癌患者治疗有效性与  
安全性研究 ..... 范群,伍小平,戴文香,等(723)
- SOX 方案和 GP 方案对晚期三阴乳腺癌患者临床疗效及 CA153、CEA 水平的影响 ..... 周丽华,杨威(728)
- 标准通道和微通道 PCNL 在不同肾盂压力下治疗感染性肾结石效果的  
Meta 分析 ..... 操作亮,刘双林,袁劲东,等(735)
- 宫腔镜电切术治疗子宫内膜息肉的临床疗效分析 ..... 徐敏,王春桃,许丹,等(742)
- SPOCK1 通过 mTOR-s6K 信号通路诱导肺癌细胞增殖、侵袭和迁移 ..... 蒲江涛,唐小军,胡智,等(746)
- 神阙灸法治疗 EAT 模型小鼠的疗效及机制初探 ..... 陈若暘,高建芸,苏方方,等(752)
- 84 例“龙虾病”的临床分析及治疗体会 ..... 肖峰秦海东,刘晓东,等(757)
- 非小细胞肺癌患者 EGFR 突变与 PET/CT<sup>18</sup>F FDG 摄取之间的相关性 ..... 丁德芹,李澄,刘璐,等(760)
- 利拉鲁肽激活 Akt 通路改善乳鼠心肌细胞缺氧/复氧损伤 ..... 张文娟,周雪,李瑞雪,等(764)
- CNPs 对肾结石大鼠尿液 NGAL、MCP-1 水平和肾功能的影响 ..... 张林超,孙继建,潘世杰,等(768)

脑源性神经营养因子与冠状动脉粥样硬化性心脏病的相关性研究·····	李瑞峰,王栋,鄢高亮,等(772)
降压药物联合高压氧治疗原发性高血压及减少并发症的临床效果分析·····	巢世红,巢世兰(776)
南京地区年轻女性 HPV 感染及宫颈病变情况分析·····	孙梦,沈杨(781)
江苏某高校教工高尿酸血症及相关性分析·····	卞文婧,葛尤,曹晓燕,等(785)
我国有机磷农药膳食暴露累积风险评估模型构建·····	孙金芳,余小金,闵捷,等(789)
丹参酮 IIA 对成年大鼠睾丸扭转的保护作用和机制研究·····	张晓文,李建华,徐赫,等(795)
前列腺小体外泄蛋白(PSEP)在慢性前列腺炎诊断中的临床应用·····	杨志超,杨建军,曾燕,等(800)
肺癌中 PLK1 的异常表达及其临床病理意义·····	徐艳,沈小星,刘标,等(804)
上调 microRNA-214 表达对肺癌细胞凋亡及耐药性的影响·····	常芬,肖贵华,李琪(811)
长链非编码 RNA- $\gamma$ 21 诱导细胞凋亡在动脉粥样硬化中的作用·····	尹来波,刘瑞英,侯量,等(816)
豆纹动脉区分支动脉粥样硬化病和腔隙性脑梗死早期神经恶化的临床 研究·····	于善花,庄爱霞,王阳,等(822)
黄芪总苷和人参皂苷降低缺血性脑卒中患者脑脊液中谷氨酸、磷酸化 Tau·····	杜杰(828)
慢性乙肝 4 项临床指标联合检测在早期肝硬化快速筛查中的应用·····	朱月萍,朱传武,钱峰,等(833)
胸部能谱成像与常规 CT 扫描辐射剂量与图像质量对比研究·····	徐秋贞,朱海雪,吕燕,等(837)
上颌后牙区种植修复后 6~9 年临床疗效观察·····	朱艳香,程然,林梓桐,等(841)

## · 综 述 ·

炎症反应与肿瘤微环境对前列腺癌作用机制的研究进展·····	苏欢,陈明(847)
脂蛋白(a)与慢性肾脏病患者心血管疾病研究进展·····	林丽华,刘宏,刘必成(852)
胃癌转移相关 lncRNA 的研究进展·····	黄珊,于天源,樊红(856)
非编码 RNA 与血管内皮功能障碍的研究进展·····	栾桂霞,贤惠敏,郭译远,等(860)
肿瘤靶向性生物膜纳米载药系统的研究进展·····	黄洁,章真,何小芳,等(864)
Nrf2-ARE 信号通路在百草枯中毒中的研究进展·····	王瑜,喻安永,李建国,等(868)
危重症微创/无创血流动力学监测技术·····	庄燕,陈明祺,戴林峰(872)
难治性分化型甲状腺癌的研究进展·····	黄韬,胡丽丽,周军(876)
间充质干细胞对免疫细胞的影响及其在自身免疫性疾病中的应用·····	刘鑫,李洋(881)

## · 消 息 ·

《东南大学学报(医学版)》稿约·····	(886)
----------------------	-------

# JOURNAL OF SOUTHEAST UNIVERSITY

( Medical Science Edition )

Oct. 25 2017 Vol. 36 No. 5 ( General Serial No. 165 )

## CONTENTS OF MAIN ARTICLES

- Paclitaxel pharmacology parameter in the application of the advanced non-small cell lung cancer** ..... SHEN Bq, WU Yuan, PENG Wei, et al. (681)
- The polymorphism study of platelet donor registry with known HLA typing in Zhuang and Han populations in Guangxi area** ..... PEI Yong-feng, LI Heng-cong, HE Ning-yu, et al. (686)
- Study on the inhibitory effect of ECCE-CIK on the HBV replication in HepG2.2.15 cells** ..... JIANG Wen-xiu, WANG Li-li, YE Wei, et al. (693)
- The influencing factors and clinical analysis of triple acid-base disorder in hospital neonate** ..... GU Hao, LU Dian, LU Yi-feng, et al. (698)
- Expression of CD36 in diabetic nephropathy and regulation of Wnt/ $\beta$ -catenin signaling experimental study on proliferation and apoptosis of human renal tubular epithelial cells** ..... HAN Xin-jian, HAO Wei, SUN Xiu-yan, et al. (704)
- Application of four-dimensional strain imaging on the prediction of left ventricular function improvement of coronary heart disease after percutaneous coronary intervention** ..... LI Yun, LI Hua, HU Jie (710)
- Diagnostic value of acoustic radiation force impulse on the chronic kidney disease stage** ..... WAN G Hui-fei, ZHANG Zhou-log, LI Xi (717)
- Study on the efficiency and safety of paclitaxel combined with platinum chemotherapy in the treatment process of advanced lung adenocarcinoma** ..... FAN Qun, WU Xiao-ping, DAI Wen-xiang, et al. (723)
- Effects of SOX and GP regimens on advanced triple-negative breast cancer patients and its affection on levels of CA153, CEA** ..... ZHOU Li-hua, YANG Wei (728)
- Meta-analysis of effects of standard channel and micro-channel PCNL in the treatment of infectious renal calculi under different renal pelvic pressure** ..... CAO Zuo-liang, LIU Shuang-lin, YUAN Jin-dong, et al. (735)
- Clinical effect of hysteroscopy in the treatment of endometrial polyps** ..... XU Min, WANG Chun-tao, XU Dan, et al. (742)
- SPOCK1 promote proliferation, invasion and migration of lung cancer cells through**

mTOR-s6K signaling pathway ..... *PU Jiang-tao, TANG Xiao-jun, HU Zhi, et al.* (746)

**Effect and possible mechanism of Shenque (CV8) moxibustion on therapy on the mice**

with autoimmune thyroiditis ..... *CHEN Ruo-yang, GAO Jian-yun, SU Fang-fang, et al.* (752)

**Correlation between EGFR mutations and PET/CT <sup>18</sup>F-FDG uptake in non-small**

cell lung cancer ..... *DING De-qin, LI Cheng, LIU Lu, et al.* (760)

**Leptin activates the Akt pathway to improve myocardial cells of neonatal rats**

with hypoxia/reoxygenation injury ..... *ZHANG Wen-juan, ZHOU Xue, LI Rui-xue, et al.* (764)

**Analysis of NGAL and MCP-1 levels in rats with kidney stones after CNPs modeling**

..... *ZHANG Lin-chao, SUN Ji-jian, PAN Shi-jie, et al.* (768)

**Clinical effect of antihypertensive drugs combined with hyperbaric oxygen in treatment**

of primary hypertension and reducing the incidence of complicated complications

..... *HEAO Shi-hong, CHAO Shi-lan* (776)

**The prevalence and correlation analysis of hyperuricemia among faculty in a university**

in Jiangsu Province ..... *BIAN Wen-jing, GE You, CAO Xiao-yan, et al.* (785)

**The mechanism research for protective effect of tanshinone IIA on testicular torsion in**

adult rats ..... *ZHANG Xiao-wen, LI Jian-hua, XU He, et al.* (795)

**Clinical application of prostatic exosomal protein (PSEP) in the diagnosis of chronic**

prostatitis ..... *YANG Zhi-chao, YANG Jian-jun, ZENG Yan, et al.* (800)

**The abnormal expression and the clinicopathologic significance of Polo-like kinase 1 (PLK1)**

in adenocarcinoma of the lung ..... *XU Yan, SHEN Xiao-xing, LIU Biao, et al.* (804)

**Effects of microRNA-214 up-regulation on apoptosis and drug resistance of lung**

cancer cells ..... *CHANG Fen, XIAO Gui-hua, LI Qi* (811)

**The effect of long non-codingRNA -p21 -induced apoptosis in atherosclerosis**

..... *YIN Lai-bo, LIU Rui-ying, HOU Liang, et al.* (816)

**Clinical study of early neurological deterioration between branch atheromatous disease and lacunar**

infarction in lenticulostriate artery territory ..... *YU Shan-hua, ZHUANG Ai-xia, WANG Yang, et al.* (822)

**A comparative study of the effect of total saponins of Astragalus and Panax ginseng saponins on**

the improvement of cognitive impairment in elderly patients with ischemic stroke ..... *Du Jie* (828)

**Rapid detection of hepatitis-B with the 4 kinds of clinical examination indexes on early cirrhosis**

risks ..... *ZHU Yue-ping, ZHU Chuan-wu, QIAN feng, et al.* (833)

**Comparative study on radiation dose and image quality between spectral imaging & conventional**

CT plain in thorax ..... *XU Qiu-zhen, ZHU Hai-xue, LV Yan, et al.* (837)

**A 6 ~ 9 years retrospective clinical study of implant in sinus-lifted maxillary bone**

..... *万方数据* ..... *ZHU Yan-xiang, CHENG Ran, LIN Zi-tong, et al.* (841)