

江苏省一级期刊  
全国中文核心期刊  
中国科技核心期刊  
RCCSE中国核心学术期刊

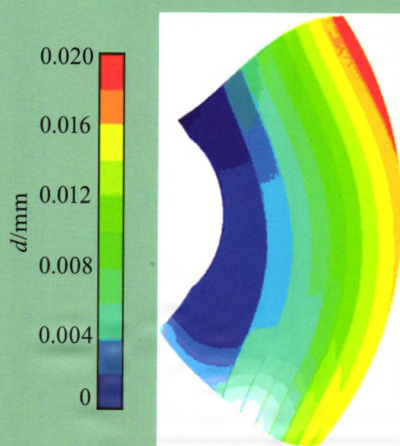
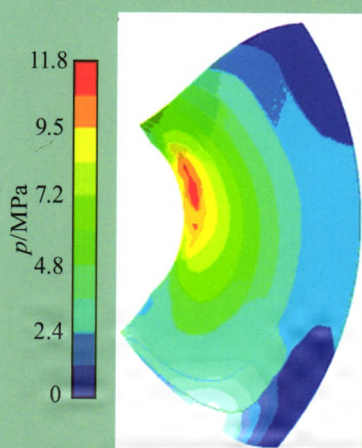
ISSN 1674-8530

CN 32-1814/TH

CODEN PAJIE2

# 排灌机械工程学报

Journal of Drainage and Irrigation Machinery Engineering



**2013**

第31卷 第9期  
Vol.31 No.9

中国·镇江  
Zhenjiang China

中国农业机械学会排灌机械分会  
江苏大学流体机械工程技术研究中心

主办

中国农业工程学会农业水土工程专业委员会  
上海凯士比泵有限公司

协办

## 目 次

### ● 泵理论与技术

栏目主编:王福军 刘厚林

#### 基于流固耦合的轴流泵叶片应力特性

施卫东, 王国涛, 张德胜, 蒋小平, 徐燕(737)

#### 斜式轴流泵装置进水流道的正交优化设计

黄健勇, 张飞珍, 张浩, 杨晓霞, 张睿(741)

#### 叶轮注塑成型模拟及工艺参数优化

王洋, 王振伟, 王维军, 叶道星(747)

#### 基于 ESO 的罗茨泵叶轮拓扑优化设计

陈小明, 赖喜德, 张翔, 周翔(752)

#### HD 型石油化工流程泵内部固液两相分布规律

刘宜, 蒋跃, 韩正杰(758)

#### 基于三元设计及数值试验轴流泵抗空化性能

靳栓宝, 王永生(763)

### ● 水利水电工程

栏目主编:戴会超 仇宝云

#### 导流锥型式对低扬程泵站水力性能的影响

周佩剑, 王福军, 张志民(768)

#### 水泵水轮机临界空化系数的数值预测

郝宗睿, 刘锦涛, 王乐勤(774)

水平轴海流能水轮机的多目标优化设计

郭鹏程, 朱国俊, 罗兴铸(778)

## ● 流体工程

栏目主编: 曹树良 林建忠

涡流发生器对试验尾水管性能改善作用分析

田晓庆, 郑源, 潘华辰, 孙斌(783)

螺旋槽干气密封热力耦合流场近似计算及分析

丁雪兴, 苏虹, 张海舟, 赵芳, 张伟政(788)

旋转锥形射流的参数影响与试验研究

李光荣, 葛英飞, 郑勇, 薛小强(794)

## ● 农业水利工程

栏目主编: 康绍忠 许迪

美国密西西比河下游水体含氮量预报方法

严宝文, Mark D. Tomer, 温得平(800)

不同配套产品对涌泉根灌土壤湿润体特性影响

陈俊英, 吴普特, 朱德兰, 张智韬, 樊晓康(805)

盐碱地排水沟水体盐分变化规律

潘延鑫, 罗紈, 贾忠华, 李进, 陈远(811)

预处理秸秆对土壤蒸发及秸秆分解率的影响

王增丽, 王珍, 冯浩(816)

变化环境下农业需水量演变趋势及驱动力

李萍, 魏晓妹(822)

## CONTENTS

- Stress characteristics in blades of axial-flow pump based on fluid-structure interaction  
 ..... *Shi Weidong, Wang Guotao, Zhang Desheng, Jiang Xiaoping, Xu Yan*(737)
- Design optimization of inlet conduit in slanted axial-flow pump installation by orthogonal array experiment  
 ..... *Huang Jianyong, Zhang Feizhen, Zhang Hao, Yang Xiaoxia, Zhang Rui*(741)
- Injection molding simulation of plastic impeller and process parameters optimization  
 ..... *Wang Yang, Wang Zhenwei, Wang Weijun, Ye Daoxing*(747)
- Topological optimization design of Roots pump lobe with ESO method  
 ..... *Chen Xiaoming, Lai Xide, Zhang Xiang, Zhou Xiang*(752)
- Solid volume concentration distribution of solid-liquid two-phase flow in HD type petrol-chemical process pump  
 ..... *Liu Yi, Jiang Yue, Han Zhengjie*(758)
- 3D design of axial-flow pump and numerical prediction of its cavitation performance  
 ..... *Jin Shuanbao, Wang Yongsheng*(763)
- Effects of guide cone configuration on hydraulic performance of low-head pumping station  
 ..... *Zhou Peijian, Wang Fujun, Zhang Zhimin*(768)
- Numerical prediction of critical cavitation number in pump-turbine  
 ..... *Hao Zongrui, Liu Jintao, Wang Leqin*(774)
- Multi-objective optimization design of horizontal-axis marine current turbine  
 ..... *Guo Pengcheng, Zhu Guojun, Luo Xingqi*(778)
- Analysis on improvement of model draft tube by vortex-generators  
 ..... *Tian Xiaoping, Zheng Yuan, Pan Huachen, Sun Bin*(783)
- Approximately analytical solutions of thermal-mechanical coupling flow field in spiral-grooved dry gas seals  
 ..... *Ding Xuexing, Su Hong, Zhang Haizhou, Zhao Fang, Zhang Weizheng*(788)
- Effects of nozzle parameters on rotating conical abrasive jet and experiments  
 ..... *Li Guangrong, Ge Yingfei, Zheng Yong, Xue Xiaoqiang*(794)
- Method for predicting nitrogen concentration in water on lower Mississippi River in USA  
 ..... *Yan Baowen, Mark D. Tomer, Wen Deping*(800)
- Effect of sleeve length on characteristics of wetted front during bubble-root irrigation  
 ..... *Chen Junying, Wu Pute, Zhu Delan, Zhang Zhitao, Fan Xiaokang*(805)
- Variation characteristics of salinity in water of drainage ditches in saline lands  
 ..... *Pan Yanxin, Luo Wan, Jia Zhonghua, Li Jin, Chen Yuan*(811)
- Effects of pretreated straws on soil evaporation and straw decomposition rate  
 ..... *Wang Zengli, Wang Zhen, Feng Hao*(816)
- Evolutionary tendency of agriculture water requirement and its driving force under changing environment  
 ..... *Li Ping, Wei Xiaomei*(822)