

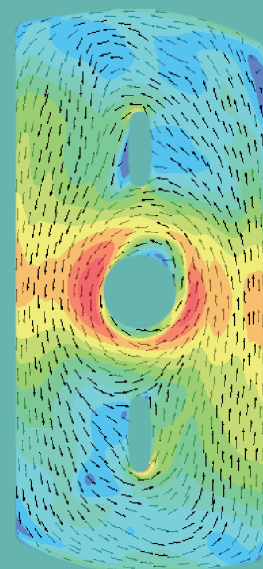
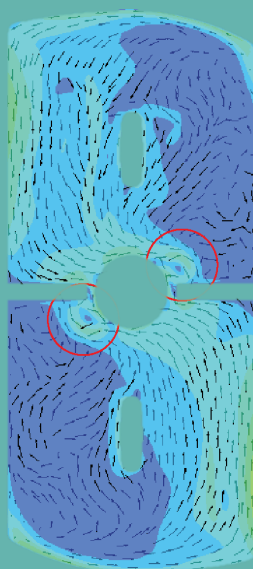
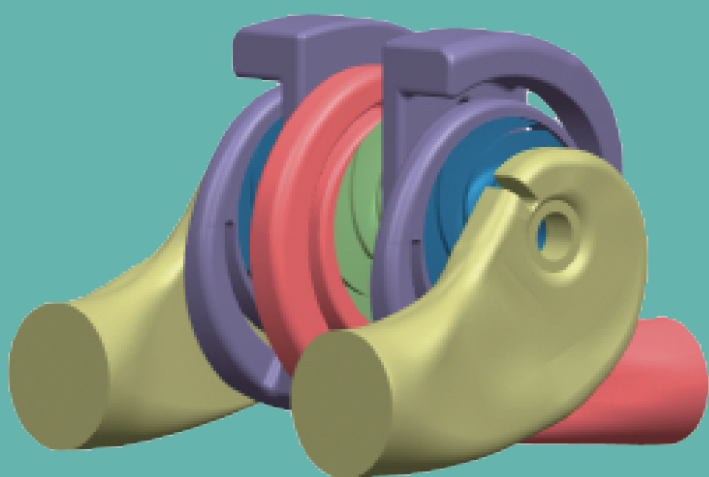
CSCD来源期刊
全国中文核心期刊
中国科技核心期刊
RCCSE中国核心学术期刊
江苏省一级期刊

ISSN 1674-8530
CN 32-1814/TH
CODEN PAJIE2

PAIGUAN JIXIE GONGCHENG XUEBAO

排灌机械工程学报

Journal of Drainage and Irrigation Machinery Engineering



2017

第35卷 第7期
Vol.35 No.7

中国·镇江
Zhenjiang, China

中国农业机械学会排灌机械分会
江苏大学流体机械工程技术研究中心

主办

国家水泵及系统工程技术研究中心
中国农业工程学会农业水土工程专业委员会

协办

目次

● 泵理论与技术

栏目主编:王福军 袁建平

介质黏度对泵作透平时性能换算的影响

杨军虎, 雷蕾, 张书玮, 苗森春, 严俊(553)

基于轴系刚度计算分析水泵轴系的振动

李耀辉, 朱双良(558)

两级中开泵级间隔板对双吸叶轮径向力的影响

王家斌, 王逸云, 袁寿其, 裴吉(564)

隔舌倒圆半径对核主泵性能的影响

贾程莉, 杨从新, 兰小刚, 程效锐, 许彪(571)

往复式矿浆液压隔膜泵无泄漏隔膜的结构

陈礼, 陈红军, 管汝光, 符义红, 张顺平(577)

● 水利水电工程

栏目主编:戴会超 仇宝云

腊寨水电站混凝土重力坝运行期应力分布仿真计算

李建伟, 洪振国(581)

水泵水轮机制动工况转轮受力分析

李琪飞, 刘萌萌, 刘谦, 张震, 张建勋(588)

● 流体工程

栏目主编: 王正伟 林建忠

3种微灌砂过滤器水动三向阀性能比较试验研究

蔡九茂, 李莉, 翟国亮, 吕谋超, 邓忠, 许睿(596)

基于二维叉排管束模型的刷式密封旋涡分离点分析

谭永发, 刘美红, 康宇驰, 王学良, 刘晋宾(602)

● 农业水土工程

栏目主编: 康绍忠 许迪

榆林市农业水土资源匹配与承载力

白洁芳, 李洋洋, 周维博(609)

周期性亏缺复水灌溉与氮肥耦合对小粒咖啡生长及光合特性的影响

郝琨, 刘小刚, 韩志慧, 余宁, 伍进波, 周林, 杨启良(616)

浑水膜孔灌单向交汇入渗特性试验研究

周文, 曹琳, 王锦辉(627)

● 排灌装备制造技术

栏目主编: 施卫东 黄修桥

改进型旁通管关键参数选择与瞬变压力控制

李小周, 朱满林, 王晓敏, 闫天柱, 王超(634)

微喷头水力性能及喷灌组合均匀性试验研究

吕名礼, 张中华, 刘俊萍(641)

执行编辑 张文涛

特约编辑 李文广

插图绘制 延晓丹

英文校核 朱兴业

CONTENTS

- Effect of medium viscosity on performance conversion of pump as turbine
..... YANG Junhu, LEI Lei, ZHANG Shuwei, MIAO Senchun, YAN Jun(553)
- Analysis on shafting vibration of pump unit based on shafting stiffness calculation
..... LI Yaohui, ZHU Shuangliang(558)
- Influence of baffles in second stage suction chamber on impeller radial force in two-stage centrifugal pump with axial split case
..... WANG Jiabin, WANG Yiyun, YUAN Shouqi, PEI Ji(564)
- Effect of tongue rounding radius on performance of reactor coolant pump
..... JIA Chengli, YANG Congxin, LAN Xiaogang, CHENG Xiaorui, XU Biao(571)
- Structure of non-leakage diaphragm of reciprocating hydraulic diaphragm pump for slurry transportation
..... CHEN Li, CHEN Hongjun, GUAN Ruguang, FU Yihong, ZHANG Shunping(577)
- Simulation of stress distribution in concrete gravity dam during operation period in Lazhai Hydropower Station
..... LI Jianwei, HONG Zhenguo(581)
- Analysis of forces on runner and blades of pump – turbine under braking condition
..... LI Qifei, LIU Mengmeng, LIU Qian, ZHANG Zhen, ZHANG Jianxun(588)
- Comparative experiment on performance of three hydrodynamic three-way valves in micro-irrigation sand filter
..... CAI Jiumao, LI Li, ZHAI Guoliang, LYU Mouchao, DENG Zhong, XU Rui(596)
- Investigation into brush seal vortex separation point based on 2D staggered tube bundle model
..... TAN Yongfa, LIU Meihong, KANG Yuchi, WANG Xueliang, LIU Jinbin(602)
- Matching and carrying capacity of agricultural water and soil resources in Yulin City
..... BAI Jiefang, LI Yangyang, ZHOU Weibo(609)
- Effects of cyclical deficit re-watering irrigation and nitrogen coupling on growth and photosynthetic characteristics of *Coffea arabica*
..... HAO Kun, LIU Xiaogang, HAN Zhihui, YU Ning, WU Jinbo, ZHOU Lin, YANG Qiliang(616)
- Experimental study on single-line interference infiltration characteristics of muddy water film-hole irrigation
..... ZHOU Wen, CAO Lin, WANG Jinhui(627)
- Key parameters selection for improved bypass pipe and its transient pressure control
..... LI Xiaozhou, ZHU Manlin, WANG Xiaomin, YAN Tianzhu, WANG Chao(634)
- Experimental study on hydraulic performance and combined uniformity of micro sprinklers
..... LYU Mingli, ZHANG Zhonghua, LIU Junping(641)