

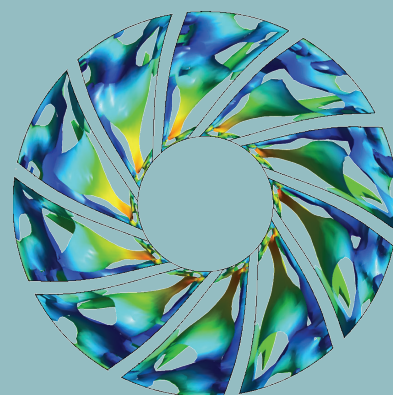
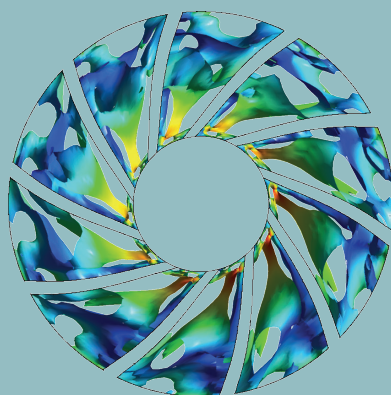
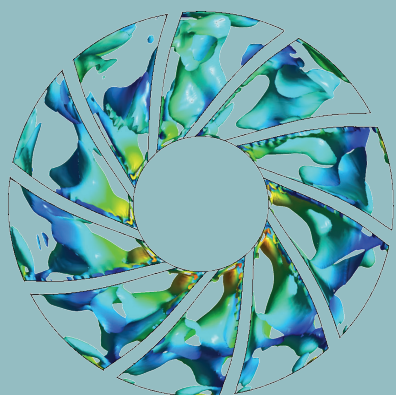
CSCD 核心库来源期刊
全国中文核心期刊
中国科技核心期刊
RCCSE 中国核心学术期刊
江苏省一级期刊

ISSN 1674-8530
CN 32-1814/TH
CODEN PAJIE2

PAIGUAN JIXIE GONGCHENG XUEBAO

排灌机械工程学报

Journal of Drainage and Irrigation Machinery Engineering



2021年12月

第39卷 第12期
Vol. 39 No.12

中国·镇江
Zhenjiang, China

江苏省教育厅 主管 江苏大学 主办

目次

● 泵理论与技术

栏目主编：王福军 袁建平

高效节能水锤泵技术研究进展

李甲振, 杨开林, 任显明, 郭永鑫 (1189)

叶片缝隙引流对高速诱导轮性能的影响

程效锐, 李敏, 李天鹏 (1196)

油气混输泵纯气输送下倾斜端面上游泵送机械密封稳态性能

潘国军, 吴鑫焱, 罗显文, 连加佛, 许静 (1203)

基于 CFD 的空间导叶出口边线性控制及内流分析

公续然, 曹璞钰, 王洋, 朱芮, 王业富 (1210)

● 水利水电工程

栏目主编：戴会超 仇宝云

矩形渠道翼形量水槽的体型优化及试验研究

刘鸿涛, 蔡蝶, 吴波, 赵瑞娟, 魏希莹, 屈忠义 (1218)

基于低影响开发的校园雨水控制及效益分析

汪星, 戎贵文, 孙双科, 郑铁刚, 胡良宇 (1223)

● 流体工程

栏目主编：王正伟 林建忠

复合粉煤灰砒砂岩水泥土力学性能室内试验研究

杨健, 李晓丽, 王辉, 耿凯强 (1230)

基于旋转圆盘的雾化装置设计及试验研究

彭超华,刘忠飞,倪培永,喜冠南,施卫东(1237)

● 农业水土工程

栏目主编:康绍忠 许迪

层状红壤水分入渗特征试验与模拟

涂安国,聂小飞,李英,李洪任(1243)

不同降水年型地下滴灌追氮对玉米产量的影响

冯浩原,尹光华,马宁宁,谷健,曹秀佳,刘泳圻(1250)

不同施氮量对滴灌加工番茄根系构型的影响

景博,牛宁,张文龙,刁明(1257)

玄武岩纤维-砒砂岩水泥土力学特性试验研究

王辉,李晓丽,杨健,耿凯强(1264)

● 固液两相流泵技术

栏目主编:谈明高

多级泵内固液两相流可视化试验测试

吴贤芳,宋炬琛,王凯,刘和明,叶和宇,谈明高(1270)

介质黏度对旋流泵内流结构的影响

权辉,于欣洋,李雅楠,宋凯,浦海燕,王卫华(1278)

基于熵产的旋流泵流动损失特性分析

赵凯尧,刘厚林,杜振明,谈明高,胡胜,董亮(1284)

● 编读园地

基于 CNKI 的 2010—2020 年《排灌机械工程学报》载文统计分析

徐云峰,盛杰,张文涛,陈建华,谈国鹏,朱漪云(1291)

● 2021 年总目次

(I)

CONTENTS

- Research progress on high-efficiency and energy-saving performance of hydraulic ram pump
..... *LI Jiazhen, YANG Kailin, REN Xianming, GUO Yongxin* (1189)
- Effect of blade gap jet on performance of high-speed inducer
..... *CHENG Xiaorui, LI Min, LI Tianpeng* (1196)
- Steady state performance of upstream pumping mechanical seal with tilt seal face of oil-gas mixture pump in gas transportation
..... *PAN Guojun, WU Xinyi, LUO Xianwen, LIAN Jiadi, XU Jing* (1203)
- Linear control design and internal flow analysis of diffuser trailing edge based on CFD
..... *GONG Xuran, CAO Puyu, WANG Yang, ZHU Rui, WANG Yefu* (1210)
- Shape optimization and experimental study of dove wing measuring flume in rectangular channel
..... *LIU Hongtao, CAI Die, WU Bo, ZHAO Ruijuan, WEI Xiyong, QU Zhongyi* (1218)
- Campus rainwater control and benefit analysis based on low impact development
..... *WANG Xing, RONG Guiwen, SUN Shuangke, ZHENG Tiegang, HU Liangyu* (1223)
- Indoor experimental study on mechanical properties of composite fly ash and Pisha-sandstone cement soil
..... *YANG Jian, LI Xiaoli, WANG Hui, GENG Kaiqiang* (1230)
- Design and experimental study of atomizing device based on rotary disc
..... *PENG Chaohua, LIU Zhongfei, NI Peiyong, XI Guannan, SHI Weidong* (1237)
- Experimental and simulation study on water infiltration characteristics of layered red soil
..... *TU Anguo, NIE Xiaofei, LI Ying, LI Hongren* (1243)
- Effect of subsurface drip irrigation and nitrogen supplement on maize yield in different precipitation years
..... *FENG Haoyuan, YIN Guanghua, MA Ningning, GU Jian, CAO Xiujia, LIU Yongqi* (1250)
- Effects of different nitrogen application rates on root architecture of processing tomatoes
..... *JING Bo, NIU Ning, ZHANG Wenlong, DIAO Ming* (1257)
- Experimental study on mechanical properties of basalt fiber-Pisha sandstone cement soil
..... *WANG Hui, LI Xiaoli, YANG Jian, GENG Kaiqiang* (1264)
- Visualization test on solid-liquid two-phase flow in multistage pump
..... *WU Xianfang, SONG Jushen, WANG Kai, LIU Heming, YE Heyu, TAN Minggao* (1270)
- Influence of liquid viscosity on internal flow structure in vortex pumps
..... *QUAN Hui, YU Xinyang, LI Yanan, SONG Kai, PU Haiyan, WANG Weihua* (1278)
- Analysis of flow loss characteristic of vortex pump based on entropy production
..... *ZHAO Kaiyao, LIU Houlin, DU Zhenming, TAN Minggao, HU Sheng, DONG Liang* (1284)
- Statistical analysis of papers published in *Journal of Drainage and Irrigation Machinery Engineering* in 2010—2020 based on CNKI
..... *XU Yunfeng, SHENG Jie, ZHANG Wentao, CHEN Jianhua, TAN Guopeng, ZHU Yiyun* (1291)