

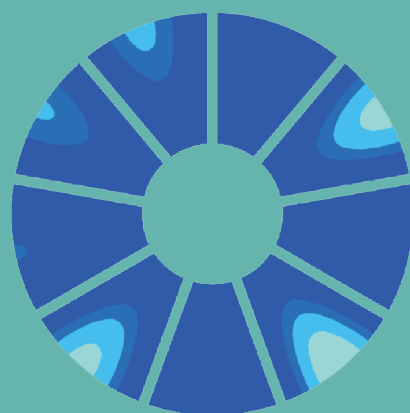
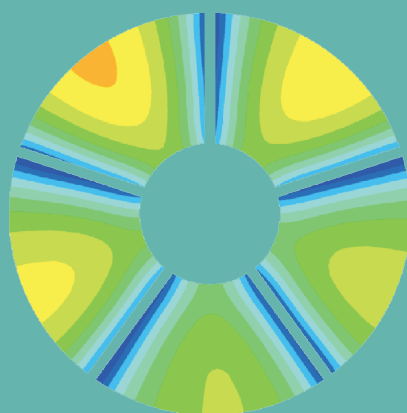
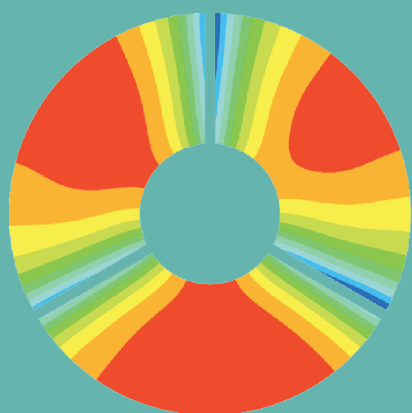
CSCD 核心库来源期刊
全国中文核心期刊
中国科技核心期刊
RCCSE 中国核心学术期刊
江苏省一级期刊

ISSN 1674-8530
CN 32-1814/TH
CODEN PAJIE2

PAIGUAN JIXIE GONGCHENG XUEBAO

排灌机械工程学报

Journal of Drainage and Irrigation Machinery Engineering



2021年7月

第39卷 第7期
Vol. 39 No. 7

中国·镇江
Zhenjiang, China

江苏省教育厅 主管 江苏大学 主办

目次

● 泵理论与技术

栏目主编：王福军 袁建平

海水淡化能量回收透平水力模型优化设计

张德胜, 祁炳, 赵睿杰, 张奇 (649)

多参数优化设计对喷水推进组合体水力性能的影响

张岩, 王路逸, 钟锦情, 龙云 (655)

多级离心泵导叶的时序效应

张可可, 谈明高, 吴贤芳, 马皓晨, 刘厚林 (663)

Robust optimization design on impeller of mixed-flow pump

ZHAO Binjuan, LIAO Wenyan, XIE Yuntong,
HAN Luyao, FU Yanxia, HUANG Zhongfu (671)

● 水利水电工程

栏目主编：戴会超 仇宝云

抽蓄机组甩负荷过程压力脉动及流动噪声仿真

冯俊, 毛秀丽, 郑源, 陈帝伊, 董正豪 (678)

低模数水玻璃对橡胶轻骨料混凝土力学性能的影响

马快乐, 王海龙, 刘思盟, 杨虹, 张佳豪, 王辉 (685)

橡胶浮石混凝土的抗冻性能及微观结构

刘思盟, 王海龙, 孙松, 王红珊, 杨虹, 王子 (692)

● 流体工程

栏目主编：王正伟 林建忠

热敏感流体空化数值模拟及流动特性分析

杨其文,张炜,李晓俊,陈峰,朱祖超(699)

水润滑推力轴承与推力盘综合试验台设计

柏宇星,孔繁余,沈勇,汪家琼,顾新艳(706)

● 农业水土工程

栏目主编：康绍忠 许迪

基于 AHP 和熵权法的枸杞水肥配施综合评判

邓箴,尹娟,吴军斌,张海军(712)

风积沙混凝土力学性能及孔隙特征

薛慧君,申向东,侯雨丰,柳宗旭,郑建庭(720)

供氮水平对水稻抽穗期植株根系形态及养分吸收的影响

戴含,王小卉,邓莹萍,李绪孟(727)

灰色理论关于滴灌加工番茄生理特性在盐化土中的应用

张继峯,王振华,张金珠,侯裕生,任作利(733)

● 排灌装备制造技术

栏目主编：施卫东 黄修桥

瞬时转速波动在轴向柱塞泵故障诊断中的应用

谷立臣,马子文,田晴晴,孙昱(740)

灌溉泵智能运行监测系统的研发

骆寅,韩岳江,董健(747)

CONTENTS

- Optimization design of hydraulic model for seawater desalination energy recovery turbine
..... ZHANG Desheng, QI Bing, ZHAO Ruijie, ZHANG Qi(649)
- Influence of multi-parameter optimization design on hydraulic performance of water-jet propulsion assembly
..... ZHANG Yan, WANG Luyi, ZHONG Jinqing, LONG Yun(655)
- Clocking effect of guide vane in multi-stage centrifugal pump
..... ZHANG Keke, TAN Minggao, WU Xianfang, MA Haochen, LIU Houlin(663)
- Robust optimization design on impeller of mixed-flow pump
..... ZHAO Binjuan, LIAO Wenyan, XIE Yuntong, HAN Luyao, FU Yanxia, HUANG Zhongfu(671)
- Simulation of pressure fluctuation and flow induced noise of pump turbine in load rejection of pumped storage unit
..... FENG Jun, MAO Xiuli, ZHENG Yuan, CHEN Diyi, DONG Zhenghao(678)
- Effect of low modulus sodium silicate on mechanical properties of rubber lightweight aggregate concrete
..... MA Kuaile, WANG Hailong, LIU Simeng, YANG Hong, ZHANG Jiahao, WANG Hui(685)
- Frost resistance and microstructure of rubber pumice concrete
..... LIU Simeng, WANG Hailong, SUN Song, WANG Hongshan, YANG Hong, WANG Zi(692)
- Numerical simulation of cavitation and analysis of flow characteristic of thermo-sensitive fluid
..... YANG Qiwen, ZHANG Wei, LI Xiaojun, CHEN Feng, ZHU Zuchao(699)
- Design of test rig for water-lubricated thrust bearing and thrust disc
..... BAI Yuxing, KONG Fanyu, SHEN Yong, WANG Jiaqiong, GU Xinyan(706)
- Comprehensive evaluation of water and fertilizer application for *Lycium barbarum* L. based on AHP and entropy weight method
..... DENG Zhen, YIN Juan, WU Junbin, ZHANG Haijun(712)
- Mechanical properties and pore characteristics of aeolian sand concrete
..... XUE Huijun, SHEN Xiangdong, HOU Yufeng, LIU Zongxu, ZHENG Jianting(720)
- Effect of nitrogen supply levels on root morphology and nutrient absorption of rice plants at heading stage
..... DAI Han, WANG Xiaohui, DENG Yingping, LI Xumeng(727)
- Application of grey theory on physiological characteristics of drip irrigation processing tomato in salinized soil
..... ZHANG Jifeng, WANG Zhenhua, ZHANG Jinzhu, HOU Yusheng, REN Zuoli(733)
- Application of instantaneous speed fluctuation signal in fault diagnosis of axial piston pump
..... GU Lichen, MA Ziwen, TIAN Qingqing, SUN Yu(740)
- Development of intelligent operation monitoring system for irrigation pump
..... LUO Yin, HAN Yuejiang, DONG Jian(747)