



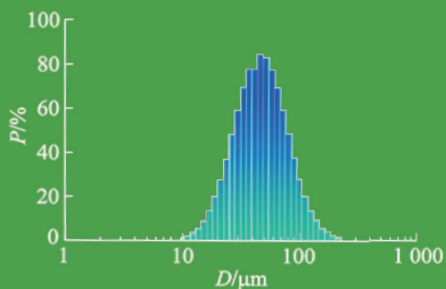
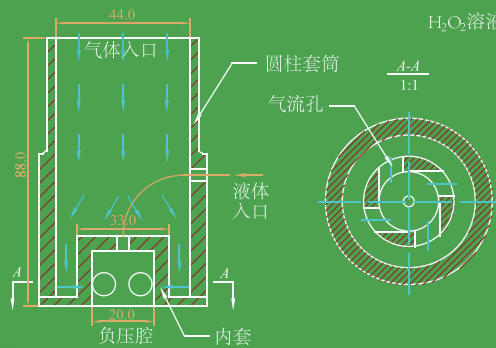
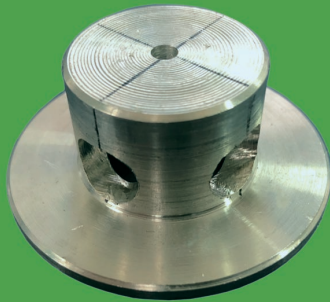
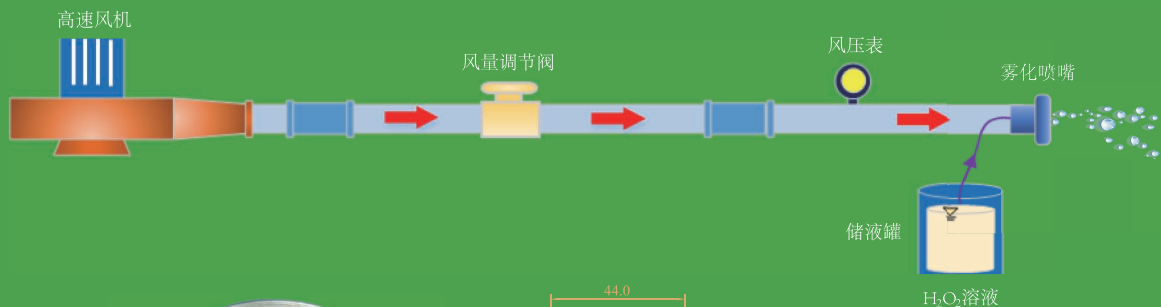
ISSN 1674-8530  
CN 32-1814/TH  
CODEN PAJIE2

# 排灌机械工程学报

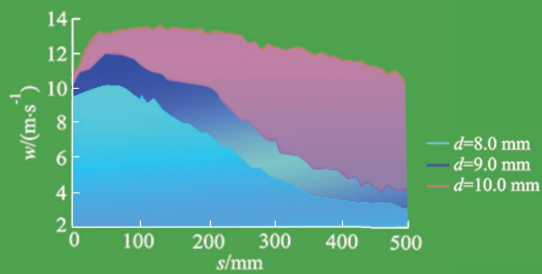
Journal of Drainage and Irrigation Machinery Engineering

江苏省教育厅 主管

江苏大学 主办



微粒直径分布



雾化微粒速度变化

康灿, 高可可, 张永超. 基于剪切效应的气动雾化喷嘴试验研究, 2022, 40 (3): 270-275.



CSCD核心库来源期刊  
全国中文核心期刊  
中国科技核心期刊  
中国农林核心期刊

中国·镇江  
Zhenjiang, China

2022年3月

第40卷 第3期  
Vol.40 No.3

# 目次

## ● 泵理论与技术

栏目主编：王福军 袁建平

不同翼型轴向积叠的轴流泵水力性能及内部流态

孙壮壮,王欣宇,石丽建,汤方平(217)

基于环对称掺气的液体射流泵试验研究

李梦秋,陈云良,华有明,徐永(223)

轴流泵装置反向发电的水力特性

黄佳程,郑源,阚阚,许哲,黄从兵,周广新,杜贻钊(230)

气液两相流工况下泵内气相特征数值计算

刘厚林,杜欣来,吴贤芳,谈明高(238)

磁力泵磁力联轴器传动的影响因素

汪家琼,冯文浩,钱文飞,王凯(244)

混流泵瞬态启动性能及空化流场可视化试验研究

邹俊杰,潘强,张德胜(250)

## ● 水利水电工程

栏目主编：戴会超 仇宝云

水利工程溢洪道底流消能水力特性分析

洪振国,苟勤章,李海华(258)

清水冲刷山溪性卵石河流河床粗化室内试验研究

叶芳,刘焕芳,程勇,黄海涛,谢淑华( 264 )

## ● 流体工程

栏目主编:王正伟 林建忠

基于剪切效应的气动雾化喷嘴试验研究

康灿,高可可,张永超( 270 )

双叉式叶尖结构对风力机风轮振动的影响

代元军,贺凯,李保华,翟明成( 276 )

高速直升机尾推螺旋桨气动设计研究

昝丙合,何森,朱建勇( 282 )

## ● 农业水利工程

栏目主编:康绍忠 许迪

掺沙对盐渍化土壤水盐分布及其蒸发特性的影响

孙池涛,邓亚鹏,孙玉霞,毛伟兵,米兆荣,张倩,张明明( 287 )

基于水量平衡下的灌区用水计划编制方法综述

丰尔蔓,李援农,胡战峰,杨靖,闵迪( 294 )

云贵高原参考作物蒸散量时空特征及成因分析

刘泉杉,吴宗俊,崔宁博,朱世丹,郑顺生( 302 )

混杂纤维轻骨料混凝土压拉性能及强度预测

郭璞,李红云,邹春霞( 311 )

生物炭和灌水量对土壤保水性及温室番茄生理特性的影响

李欣雨,张川,闫浩芳,AKHLAQ Muhammad,李岚兰,张文程,王纪章( 317 )

**CONTENTS**

- Hydraulic performance and flow patterns of axial-flow pumps with axial stacking of different airfoil series  
..... *SUN Zhuangzhuang, WANG Xinyu, SHI Lijian, TANG Fangping*( 217 )
- Experimental study on liquid jet pump based on cyclic symmetrical aeration  
..... *LI Mengqiu, CHEN Yunliang, HUA Youming, XU Yong*( 223 )
- Hydraulic characteristics of reverse power generation of axial-flow pump  
..... *HUANG Jiacheng, ZHENG Yuan, KAN Kan, XU Zhe,*  
*HUANG Congbing, ZHOU Guangxin, DU Yizhao*( 230 )
- Numerical simulation on gas-phase characteristics of gas-liquid two-phase flow in pump  
..... *LIU Houlin, DU Xinlai, WU Xianfang, TAN Minggao*( 238 )
- Influencing factors of magnetic coupling transmission of magnetic pump  
..... *WANG Jiaqiong, FENG Wenhao, QIAN Wenfei, WANG Kai*( 244 )
- Transient start-up performance of mixed-flow pump and visual experimental study on cavitation flow field  
..... *ZOU Junjie, PAN Qiang, ZHANG Desheng*( 250 )
- Analysis of hydraulic characteristics of spillway underflow energy dissipation in hydraulic engineering  
..... *HONG Zhenguo, GOU Qinzhong, LI Haihua*( 258 )
- Laboratory experimental study on roughening of riverbed of mountain-stream pebble rivers scoured by clear water  
..... *YE Fang, LIU Huanfang, CHENG Yong, HUANG Haitao, XIE Shuhua*( 264 )
- Experimental study on pneumatic atomizing nozzle based on shear effect  
..... *KANG Can, GAO Keke, ZHANG Yongchao*( 270 )
- Influence of double-fork blade tip structure on wind turbine vibration  
..... *DAI Yuanjun, HE Kai, LI Baohua, ZHAI Mingcheng*( 276 )
- Research on aerodynamic design of tail-thrust propeller of high-speed helicopter  
..... *ZAN Binghe, HE Miao, ZHU Jianyong*( 282 )
- Effects of sand mixing on soil water-salt distribution and soil evaporation characteristics for salinized soil  
..... *SUN Chitao, DENG Yapeng, SUN Yuxia, MAO Weibing,*  
*MI Zhaorong, ZHANG Qian, ZHANG Mingming*( 287 )
- Review on methods for water use planning in irrigation districts based on water balance  
..... *FENG Erman, LI Yuannong, HU Zhanfeng, YANG Jing, MIN Di*( 294 )
- Spatial-temporal distribution characteristics and attribution analysis of reference crop evapotranspiration in Yunnan-Kweichow Plateau  
..... *LIU Quanshan, WU Zongjun, CUI Ningbo, ZHU Shidan, ZHENG Shunsheng*( 302 )
- Compression and tensile performance and strength prediction of hybrid fiber lightweight aggregate concrete  
..... *GUO Pu, LI Hongyun, ZOU Chunxia*( 311 )
- Effects of biochar and irrigation amount on soil water retention and physiological characteristics of tomato under greenhouse condition  
..... *LI Xinyu, ZHANG Chuan, YAN Haofang, AKHLAQ Muhammad,*  
*LI Lanlan, ZHANG Wencheng, WANG Jizhang*( 317 )