



ISSN 1672-3619

CN 44-1503/R

热带医学杂志

REDAI

YIXUE

ZAZHI

2015年8月第15卷 第8期 Aug. 2015 Vol.15 No.8

JOURNAL OF TROPICAL MEDICINE

中国科技论文统计源期刊(中国科技核心期刊)

中国核心期刊(遴选)数据库全文收录期刊

RCCSE 中国核心学术期刊

美国化学文摘(CA)数据库源期刊

美国《乌利希国际期刊指南》(Ulrich's

International Periodicals Directory)

ISSN 1672-3619



中华预防医学会系列杂志

SERIAL JOURNAL OF CHINESE PREVENTIVE MEDICINE ASSOCIATION



2015

热带医学杂志

REDAI YIXUE ZAZHI

月刊 2001年8月创刊 第15卷 第8期 2015年8月28日出版

目次

主管:广东省科学技术协会
主办:广东省寄生虫学会
(广州市中山二路74号,510080)
中华预防医学会
(北京市西城区鼓楼西大街154号,100009)
承办:中山大学中山医学院寄生虫学研究所
南方医科大学生物技术学院
广东省疾病预防控制中心
协办:广州市疾病预防控制中心
中山大学达安基因股份有限公司

标准连续出版物号
ISSN 1672-3619
CN 44-1503/R
名誉主编:谢明权 陈观今
主编:余新炳
编辑部主任:徐 劲
编辑:热带医学杂志编委会
出版:广东热带医学杂志社
(广州市中山二路74号中山大学中山医学院内,510080)
电话/传真: (020) 87333191
http://rdyz.cbpt.cnki.net
E-mail: rdyyzz@163.com

发行范围 国内:广东热带医学杂志社
国外:中国国际图书贸易总公司(北京399信箱,100044) 代号 M724

广告许可证:粤广证字 440000100031
印刷:广州中大印刷有限公司
定价:每期 15.00 元,全年 180.00 元
本期责任编辑:徐 劲 杨 萍
陈水银 刘晓红
卢 俊
冯明钊(英文、香港)
麦乃歧(英文、香港)

2015 年版权归广东热带医学杂志社和中华预防医学会共有
本刊刊出的所有文章不代表本刊编委会的观点,除非特别声明
本刊如有印装质量问题,请向本刊编辑部调换

【实验研究论著】

- 肺孢子菌基因 LAMP 检测方法的建立
..... 张楠,秦铮,马素丽,等(1007)
- 新型干细胞 iPSCs-MSCs 对泡沫细胞胆固醇含量的影响及
调节机制研究 梁美玲,曾武涛,陈伟燕,等(1010)
- 广州地区献血人群登革热病毒感染的血清流行病学调查
..... 陈锦艳,廖峭,游冉冉,等(1014)
- 痰样结核杆菌抗原 85B mRNA 检测在肺结核疗效评价中的应用
..... 武学成,唐曙明(1017)
- TRIM28 在胃癌中的表达与沉默对胃癌细胞增殖和凋亡的影响
..... 曾轶,陈鸿程,李世通,等(1020)
- 小鼠 β -防御素-1 的对 Hek293 细胞迁移的作用
..... 白瑞霞,孙鹏,杨丽敏,等(1023)
- 副溶血性弧菌流行特征及毒力基因分析
..... 杨贵清,杜小莉,卓菲,等(1026)
- 铅对大鼠 CaMK II 的影响及行为记忆改变
..... 曹建华,孔新秀,秦家濂(1031)
- S-1 联合顺铂化疗治疗 IV 期胃癌患者疗效与 REG I α 表达水平的
相关性研究 刘丽娜,尹先哲(1034)
- 新型肠道病毒空斑实验在猴轮状病毒中的应用效果观察
..... 尹应先,旷雅舒,徐翼(1038)

【临床研究论著】

- 初始不适当抗菌治疗对 ICU 鲍曼不动杆菌感染患者死亡率
的影响 李海红,刘永良,姚立岩,等(1041)
- 米索前列醇预防剖宫产术中及术后出血的临床观察
..... 李翠兰,宋丽萍,陈敦金,等(1045)
- 连山壮族瑶族自治县人民医院神经内科门诊患者的病种分析
..... 王小娟,潘小平,韦海明(1048)

- 维持性血液透析患者血尿酸与血压昼夜节律、变异性的关系 田关源,傅君舟,邱瑞华,等(1052)
- NGF 联合甘露醇治疗高血压脑出血的研究 吴国彪,陈永群,王康(1057)
- 不同中医治法对 IgA 肾病疗效的 Meta 分析 孙晓敏,林昌松,唐杨,等(1059)
- 登革热实验室诊断标准准确率的研究 明凯华,雷秀霞,龙幼敏,等(1066)
- 红细胞指数和 HbA2 在轻型 α 地贫筛查中的临床应用 冯桂玲,朱雪莲,王忠英,等(1069)
- DNF 方案治疗晚期胃癌的临床观察 彭静,郭经锋,吴锋,等(1073)
- 辛伐他汀影响 2 型糖尿病合并肾病葡萄糖代谢的研究 范绍美(1076)
- 血清尿酸水平与早发性冠状动脉疾病患者心血管风险相关性分析 李小华,周志宏,邢波,等(1079)
- 两性霉素 B 联合氟胞嘧啶治疗艾滋病合并隐球菌脑膜炎患者的疗效分析 夏旭辉,陈妍(1083)
- 生物反馈电刺激与中药灌肠合用缓解慢性盆腔痛的效果评价 林琼林,刘晓园,尹艳花(1087)
- 刺血疗法配合电针治疗失眠最佳时间的临床研究 杨路,陈莹,莫献洁(1090)
- 联合雾化吸入治疗哮喘患儿 120 例临床疗效观察 崔楠(1093)
- 不同颅内血肿微创术手术时机对治疗高血压脑出血的疗效影响分析 ... 董玉贵,赵立斌,周学伟,等(1096)
- 糖尿病高危患者血脂异常的相关因素研究 白洁(1100)
- 免充气双管喉罩应用于困难气道麻醉中的临床观察 李利(1103)
- 血清 Cys-C 对急性心肌梗死患者 PCI 术后生存状况的影响 施巍,刘冰,董晖(1106)
- 癫痫发作患儿的远期临床结局及影响因素研究 付焕巧,张桂平,刘金和,等(1109)

【疾病预防控制论著】

广州市母亲 HBsAg 阳性所生新生儿接种行为的影响因素 Logistic 分析

- 李志群,许建雄,蔡衍珊,等(1113)
- 深圳市龙岗区致泻性大肠埃希菌感染状况研究 邹惠英,刘丽红,吴洁,等(1117)
- 广州市孕妇饮酒行为及饮酒风险评估 陈思宇,陈章颖,刘伟佳(1121)
- 宜昌市 0-14 岁儿童哮喘治疗现状分析 王芳,王敏(1125)
- 2005-2012 年安徽省肾综合征出血热监测及流行病学分析 王俊,孙永,张永根,等(1128)
- 2013-2014 年龙华新区疑似预防接种异常反应特征分析 徐芳,周世权,林巧香,等(1132)
- 2006-2014 年重庆市北碚区水痘流行病学特征分析 袁海艳,周光华,周永超(1135)
- 2004-2013 年重庆市开县流行性腮腺炎暴发疫情特征分析 邱占富,谭程,谭毅,等(1138)
- 2013-2014 年北京市门头沟区肠道病原菌监测结果分析 吕秋艳,王志越,褚添,等(1141)
- 1950-2014 年始兴县疟疾防治措施与效果评价 邓月娇,谢伦庚,龙洪志,等(1144)
- 一起 633 例诺如病毒感染性腹泻暴发的调查 李玮,李劲松,祝睿,等(1147)

【综述】

- 鱼的黏膜免疫研究进展 姜红焯,黄艳,余新炳(1150)
- PCR 及其衍生技术在华支睾吸虫检测中的应用 陈莹,杨齐,吴尚为(1154)
- 循环肿瘤细胞及其在肠癌治疗中的应用进展 陈刚,曲义坤,姜威,等(1158)

JOURNAL OF TROPICAL MEDICINE

Monthly Established in August, 2001 Volume 15 Number 8 Aug. 28, 2015

Deputy Managing Director:

Guangdong Province Association of
Science and Technology

Affiliated Institution:

China Preventive Medicine
Association; Guangdong Province
Society of Parasitology

Institute of Parasitology:

Zhongshan School of Medicine,
Sun Yat-sen University

SSN:

ISSN 1672-3619

CN 44-1503/R

Honorary Chief Editor:

XIE Min-quan CHEN Guan-jin

Editor in Chief:

YU Xin-bing

Managing Director:

XU Jin

Edited & Published:

Editorial Board of Journal of Tropical
Medicine, Zhongshan School of
Medicine, Sun Yat-sen University,
74 Zhongshan Road II, 510080,
Guangzhou, P.R.China
E-mail: rdyxzz@163.com
Publication Date: 28 Per month

Publish:

Editorial Board of Journal of
Tropical Medicine

Print:

Guangzhou Zhongda Printing Co.,
Ltd.

Price: ¥15.0

CONTENTS IN BRIEF

[Experiment Research]

Development of the LAMP method for detecting the *Pneumocystis*

..... ZHANG Nan, QIN Zheng, MA Su-li, et al(1007)

Effects and modulating mechanism of iPSCs-MSCs on cholesterol concentration in macrophage foam cell

.. LIANG Mei-ling, ZENG Wu-tao, CHEN Wei-yan, et al(1010)

Serum epidemiological investigation of dengue virus infection in blood donors from Guangzhou

..... CHEN Jin-yan, LIAO Qiao, YOU Ran-ran, et al(1014)

Monitoring tuberculosis therapeutic efficacy by RT-PCR analysis of antigen 85B mRNA of *M.tuberculosis* in sputum

..... WU Xue-cheng, TANG Shu-ming(1017)

The expression of TRIM28 in the gastric cancer and effect of transfection with TRIM28 siRNA on the proliferation and apoptosis of gastric cancer cells

... ZENG Duan, CHEN Hong-cheng, LI Shi-tong, et al(1020)

Effect of mouse β -defensin-1 on the Hek293 cells

..... BAI Rui-xia, SUN Peng, YANG Li-min, et al(1023)

Analysis on virulence genes and epidemiological characteristics of *Vibrio parahaemolyticus*

..... YANG Gui-qing, DU Xiao-li, ZHUO Fei, et al(1026)

Effect of lead on the behavior and the express of CaMK II in hippocampus in Wistar rat

..... CAO Jian-Hua, KONG Xin-Xiu, QIN Jia-lian(1031)

Study of relationship between REG I α and treatment outcomes of chemotherapy S-1 plus cisplatin in patients with stage IV gastric cancer

..... LIU Li-na, YIN Xian-zhe(1034)

The effect of a new plaque assay for enterovirus on a simian rotavirus

..... YIN Ying-xian, KUANG Ya-shu, XU Yi(1038)

[Clinical Research]

Effect of inappropriate initial antibiotic therapy on mortality by *Acinetobacter baumannii* infection in ICU patients

..... LI Hai-hong, LIU Yong-liang, YAO Li-yan, et al(1041)

The effects of different ways of using misoprostol in prevention of intraoperative and postoperative bleeding in cesarean section

..... LI Cui-lan, SONG Li-ping, CHEN Dun-jin, et al(1045)

Analysis of disease spectrum of neurological outpatients from Lianshan Zhuang and Yao Autonomous County People's hospital

..... WANG Xiao-juan, PAN Xiao-ping, WEI Hai-ming(1048)

The relationship between uric acid and blood pressure circadian rhythm and blood pressure variability in maintenance hemodialysis patients

... TIAN Guan-yuan, FU Jun-zhou, QIU Riu-hua, et al(1052)

The clinical study of nerve growth factor (NGF) and mannitol in treating cerebral hemorrhage

..... WU Guo-biao, CHEN Yong-qun, WANG Kang(1057)

- Chinese herbal medicine for IgA nephropathy: meta-analysis of randomized controlled trials**
 SUN Xiao-min, LIN Chang-song, TANG Yang, et al(1059)
- Study of the significance of dengue fever laboratory diagnostic indicators**
 MING Kai-hua, LEI Xiu-xia, LONG You-min, et al(1066)
- Clinical value of RBC parameters and HbA₂ in alpha thalassemia carriers**
 FENG Gui-ling, ZHU Xue-lian, WANG Zhong-ying, et al(1069)
- A phase II clinical trial of docetaxel plus nedaplatin and fluorouracil as first-line chemotherapy for advanced gastric cancer**
 PENG Jing, GUO Jing-Feng, WU Feng, et al(1073)
- The effect of simvastatin on glucose metabolism in type 2 diabetic nephropathy**
 FAN Shao-mei(1076)
- Serum uric acid and its relationship with cardiovascular risk in patients with early-onset coronary artery disease**
 LI Xiao-hua, ZHOU Zhi-hong, XING Bo, et al(1079)
- The impact of clinical symptoms and treatment effect of amphotericin B combined with flucytosine in the treatment of AIDS combined with *Cryptococcal* neoformans meningitis**
 XIA Xu-hui, CHEN Qi(1083)
- Evaluation of biofeedback electrical stimulation combined with traditional Chinese medicine enema to alleviate pain in patients with chronic pelvic pain**
 LING Qiong-lin, LIU Xiao-yuan, YIN Yan-hua(1087)
- The clinical study of the optimal time of treating insomnia with blood-letting therapy and electric acupuncture**
 YANG Lu, CHEN Ying, MO Xian-jie(1090)
- Clinical observation of montelukast combined with budesonide inhalation therapy in treating 120 cases of children with acute exacerbation asthma**
 CUI Nan(1093)
- The curative effect of different intracranial hematoma micro ChuangShu operation time influence on treatment of hypertensive cerebral hemorrhage**
 DONG Yu-gui, ZHAO Li-bin, ZHOU Xue-wei, et al(1096)
- Related factors of dyslipidemia for people with high risk of diabetes**
 BAI Jie(1100)
- The clinical observation of free inflatable double-barreled laryngeal mask used in difficult airway anesthesia**
 LI Li(1103)
- The effect of Cys-C on living condition of PCI Post-surgical Survival of AMI Patients**
 SHI Wei, LIU Bing, DONG Hui(1106)
- Study of long-term clinical outcome and influence factors in children with epileptic seizures**
 FU Huan-qiao, ZHANG Gui-ping, Liu Jin-he, et al(1109)
- [Disease Control and Prevention]**
- Logistic analysis of vaccination behaviors of neonatal HBIG vaccination of HBsAg positive mothers in Guangzhou**
 LI Zhi-qun, XU Jiang-xiong, CAI Yan-shan, et al(1113)
- Diarrheogenic *Escherichia coil* infection in diarrhea patients in Longgang district of Shenzhen**
 ZOU Hui-ying, LIU Li-hong, WU Jie, et al(1117)
- Drinking behavior and risk assessment of pregnant women in Guangzhou**
 CHEN Si-yu, CHEN Zhang-ying, LIU Wei-jia(1121)
- Analysis of the treatment of children's asthma in Yichang city**
 WANG Fang, WANG Min(1125)
- Surveillance and epidemiological analysis of hemorrhagic fever with renal syndrome in Anhui Province, 2005–2012**
 WANG Jun, SUN Yong, ZHANG Yong-gen, et al(1128)
- The analyze of the characteristics of adverse effects following immunization in LongHua new district from 2013 to 2014**
 XU Fang, ZHOU Shi-quan, LIN Qiao-xiang, et al(1132)
- Analysis on epidemiology of varicella in Beibei districts in Chongqing during 2006–2014**
 YUAN Hai-yan, ZHOU Guang-hua, ZHOU Yong-chao(1135)
- Analysis of characteristics of mumps outbreaks in Kaixian, Chongqing, 2004–2013**
 QIU Zhan-fu, TAN Cheng, TAN Yi, et al(1138)
- Analysis of enteric pathogenic bacteria surveillance results in Mentougou district of Beijing from 2013 to 2014**
 LÜ Qiu-yan, WANG Zhi-yue, CHU Tian, et al(1141)
- Assessment of malaria prevention and control measures in Shixing county from 1950 to 2014**
 DENG Yue-jiao, XIE Lun-geng, LONG Hong-zhi, et al(1144)
- An epidemiological investigation on infectious diarrhea outbreak with 633 cases caused by norovirus**
 LI Wei, LI Jin-song, ZHU Rui, et al(1147)

下图 1~2:张楠,秦铮,马素丽,等. 检测肺孢子菌基因 LAMP 方法的建立(正文见第 1007~1009 页)

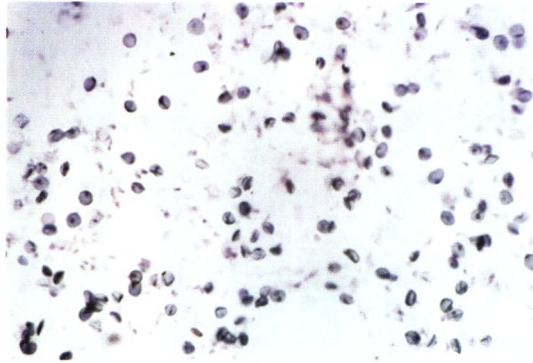
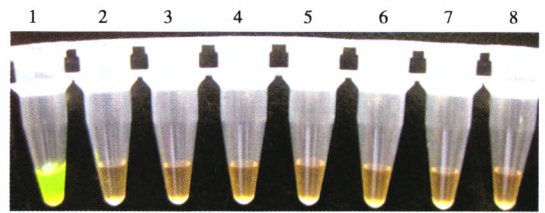


图 1 肺孢子菌包囊(模型大鼠肺印片,GMS 染色,×1000)
Fig.1 Pneumocystis cysts in lung smear of model rat by GMS staining

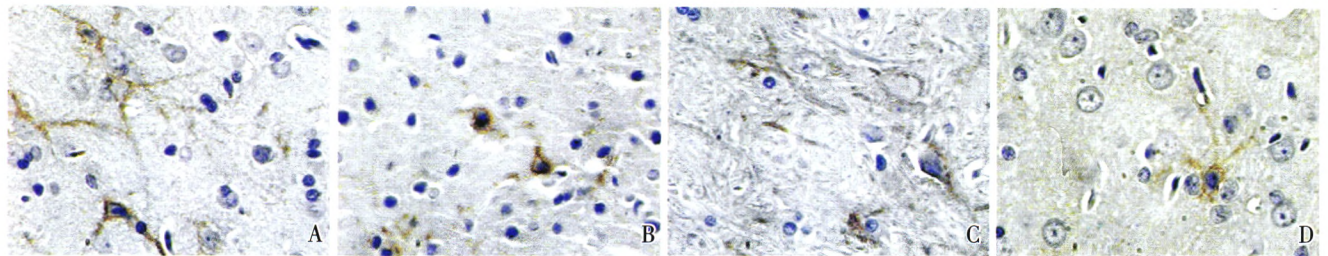


1.肺孢子菌,2.白色念珠菌,3.热带假丝酵母菌,4.近平滑念珠菌,5.光滑念珠菌,6.支原体 FH 株,7.溶血性链球菌,8.金黄色葡萄球菌 MRSA 株。

图 2 LAMP 检测肺孢子菌基因的特异性
Fig.2 The Specificity of the LAMP for detecting Pneumocystis



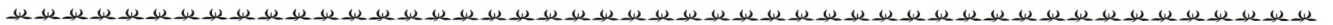
下图 2:曹建华,孔新秀,秦家濂. 铅对大鼠 CaMK II 的影响及行为记忆改变(正文见第 1031~1033,1040 页)



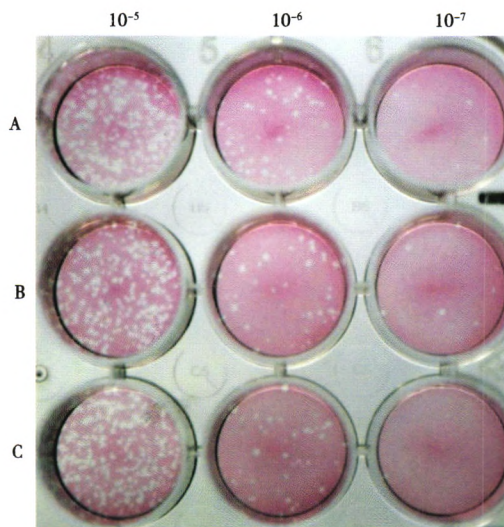
A:空白对照组;B:低剂量组;C:中剂量组;D:高剂量组

图 2 各组动物脑组织 CaMK II 表达比较(IHC,×400)

Fig.2 The Expression of CaMK II in rat brain of each group (IHC,×400)



下图 1~2:尹应先,旷雅舒,徐翼. 新型肠道病毒空斑实验在猴轮状病毒中的应用效果观察(正文见第 1038~1040 页)



每个稀释度做了三个复孔。

图 1 24 孔板新型病毒空斑实验用于 SA11/MA104 模型 (24 孔板)

Fig.1 New plaque assay used in SA11/MA104 model(24-well plate)

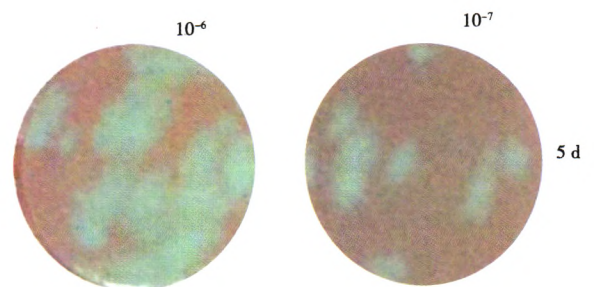


图 2 覆盖培养基中高浓度胰酶导致的细胞非特异性脱落
Fig.2 Nonspecific detaching of monolayer under high concentration of trypsin (10 µg /ml)