



ISSN 1672-3619

CN 44-1503/R

# 热带医学杂志

REDAI

YIXUE

ZAZHI

2016年8月第16卷 第8期 Aug. 2016 Vol. 16 No. 8

JTM

## JOURNAL OF TROPICAL MEDICINE

中国科技论文统计源期刊(中国科技核心期刊)

中国核心期刊(遴选)数据库全文收录期刊

RCCSE 中国核心学术期刊

美国化学文摘(CA)数据库源期刊

美国《乌利希国际期刊指南》(Ulrich's

International Periodicals Directory)



ISSN 1672-3619



中华预防医学会系列杂志

SERIAL JOURNAL OF CHINESE PREVENTIVE MEDICINE ASSOCIATION



2016

# 热带医学杂志

REDAI YIXUE ZAZHI

月刊 2001年8月创刊 第16卷 第8期 2016年8月28日出版

**主管:**广东省科学技术协会  
**主办:**广东省寄生虫学会  
(广州市中山二路74号,510080)  
中华预防医学会  
(北京市西城区鼓楼西大街154号,100009)  
**承办:**中山大学中山医学院寄生虫学研究所  
南方医科大学生物技术学院  
广东省疾病预防控制中心  
**协办:**广州市疾病预防控制中心  
中山大学达安基因股份有限公司

标准连续出版物号

ISSN 1672-3619

CN 44-1503/R

**主编:**余新炳

**编辑部主任:**杨萍

**编辑:**热带医学杂志编委会

**出版:**广东热带医学杂志社

(广州市中山二路74号中山大学中山医学院内,510080)

电话/传真: (020) 87333191

http://rdyz.cbpt.cnki.net

E-mail: rdyxzz@163.com

**发行范围** 国内:广东热带医学杂志社

国外:中国国际图书贸易总

公司(北京399信箱,100044)

代号 M724

**广告许可证:**粤广证字 440000100031

**印刷:**广州中大印刷有限公司

**定价:**每期 15.00 元,全年 180.00 元

**本期责任编辑:**卢俊 杨萍

陈水银 刘晓红

冯明钊(英文、香港)

麦乃歧(英文、香港)

2016 年版权归广东热带医学杂志社所有

本刊刊出的所有文章不代表本刊编委会的观点,除非特别声明

本刊如有印装质量问题,请向本刊编辑部调换

## 目次

### 【实验研究论著】

重组酶聚合酶等温扩增快速检测结核分枝杆菌

..... 陈斌,杨银梅,钟志敏,等(955)

抗弓形虫腺苷激酶 IgY 的制备及理化性质的研究

..... 汪六庆,周银娣,徐海红(958)

跑台运动对阿尔茨海默病模型小鼠同型半胱氨酸水平的影响

..... 郑洗华,曾丽,罗冠彬,等(962)

双石汤对高血压大鼠心肌肥厚的作用

..... 陈婧,高洁娣,杨群玉(965)

IP-10 在儿童结核病中的表达 ..... 李奇凤,余亮,辛涛,等(968)

Molecular epidemiology and meteorology of hand, foot and mouth

disease in Guangzhou during a highly pandemic period

..... OU Zhi-ying, YIN Ying-xian, WU Shao-qing, et al(971)

乙型肝炎病毒 X 蛋白诱导 p16<sup>INK4A</sup> 基因启动子甲基化

及其机制研究 ..... 邝建玉,杨林,瞿志军(976)

深圳市 H7N9 禽流感病毒神经氨酸酶基因演化分析

..... 吕星,房师松,王昕,等(980)

缺铁性贫血与慢性病贫血的鉴别诊断

..... 黄衍锋,郑望春,丘衍博,等(984)

问号钩端螺旋体 LipL32-LipL41 融合基因的克隆与原核表达

..... 胡玉山,肖丽红,刘巧谊,等(987)

登革 2 型病毒 NS2B<sub>H</sub>-NS3 蛋白酶复合物的原核表达及活性研究

..... 林卫虹,林勇平,杨笑涵,等(991)

CLSI EP12-A2 文件在儿童肺炎支原体肺炎检测方法的性能

评价中的应用 ..... 黄妩姣,张伟涛,黄宪章,等(995)

- 斑点免疫金渗滤技术检测抗心磷脂抗体 ..... 陈淑芬,李凯,李相新,等(997)
- 云浮地区儿童急性呼吸道感染常见病毒病原学调查 ..... 袁炜华,邓婷,冯月平,等(1000)
- 珠海地区女性 HPV 感染状况及基因亚型分布 ..... 张振林,黄琳,黄建宏,等(1004)
- 一例输入性 2 岁幼儿感染三日疟的病例调查 ..... 李晓恒,高世同,裴福全,等(1008)

### 【临床研究论著】

- 丹参多酚酸盐对 ACS 患者血小板活化功能的影响及作用机制 ..... 程菲,刘晓凤,冯玉颜(1012)
- Gn 启动月经阴道彩色多普勒超声对卵巢反应性的预测价值 ..... 陈霞,陈智毅,王伟群(1016)
- sFas、sFasL、 $\beta$ 2-MG 和细胞因子与 ITP 患者的相关性 ..... 陈扬清(1020)
- 血液灌流串联透析治疗急性百草枯中毒的效果 ..... 苏醒,曹玉芳,王华杰,等(1023)
- 重组人脑利钠肽对急性心衰患者血浆 BNP、NE 水平及心功能的影响 ... 马朝晨,滑俊峰,郝艳敏,等(1026)
- 正常高值血压人群 CIMT 与 HCY 的关系 ..... 韩梅,邢淑芳(1030)
- 足月新生儿窒息时复苏采用氧浓度与脑损伤的相关性 ..... 梁明姬,马国哲,韩芳,等(1033)
- CME 与传统手术治疗结肠癌患者临床疗效比较 ..... 林允伟(1037)
- 益气养阴活血法联合二甲双胍治疗 2 型糖尿病的临床疗效 ..... 徐经涛,林经,陈斯舒(1040)
- 近足月胎儿生长受限的分娩孕周探讨 ..... 曾慧倩,赖毓冕,石磊(1043)
- 颈围与代谢综合征关系及和 FEV1 相关性 ..... 赵思文,李万根,吴君洁(1046)
- 不同剂量瑞舒伐他汀钙治疗青年脑梗死合并高脂血症的疗效 ..... 冯志霞,许哲通,吕志坤,等(1049)
- 右美托咪啶对 ACS 血管反应和临床转归的影响 ..... 邓艳娜,李玉忠(1052)
- 奥美沙坦对高血压患者血压晨峰及尿微量白蛋白的影响 ..... 汪斌,管红斌,何凯平(1056)
- 宫腔镜联合阴式超声在 CSD 诊断中的价值 ..... 李三群(1059)
- 阿司匹林联合氯吡格雷应用对体外循环冠状动脉旁路移植术后患者早期影响的 Meta 分析  
..... 曹晨,唐其柱,陈榕,等(1063)
- 炎性因子以及 PCT 用于鉴别诊断颅内感染的性质 ..... 刘美,李子渊(1068)
- 广东省 449 例输入性疟疾的临床特点分析 ..... 洪文昕,王建,杨慧勤,等(1071)

### 【疾病预防控制论著】

- 广州市越秀区大肠癌筛查方法评价 ..... 张婷,龚诚华,戴丽萍,等(1075)
- 韶关市区学龄前儿童视力发育现状的横断面调查 ..... 肖朝霞,范开蓉,陈晓芳,等(1079)
- 2009-2015 年深圳市西乡地区感染性腹泻流行病学特征 ..... 许增生,常改凤,邱望,等(1083)

### 【综述】

- IL-25 在寄生虫感染性疾病中的研究进展 ..... 侯珠秀,陈庭金,黄艳,等(1086)

# JOURNAL OF TROPICAL MEDICINE

Monthly    Established in August, 2001    Volume 16    Number 8    Aug. 28, 2016

## Deputy Managing Director:

Guangdong Province Association of  
Science and Technology

## Affiliated Institution:

China Preventive Medicine  
Association; Guangdong Province  
Society of Parasitology

## Institute of Parasitology:

Zhongshan School of Medicine,  
Sun Yat-sen University

## SSN:

ISSN 1672-3619

CN 44-1503/R

## Editor in Chief:

YU Xin-bing

## Managing Director:

YANG Ping

## Edited & Published:

Editorial Board of Journal of Tropical  
Medicine, Zhongshan School of  
Medicine, Sun Yat-sen University,  
74 Zhongshan Road II, 510080,  
Guangzhou, P.R.China  
E-mail: rdyxzz@163.com

Publication Date: 28 Per month

## Publish:

Editorial Board of Journal of  
Tropical Medicine

## Print:

Guangzhou Zhongda Printing Co.,  
Ltd.

Price: ¥15.0

## CONTENTS IN BRIEF

### [Experiment Research]

#### Rapid detection of *Mycobacterium tuberculosis* using recombinase polymerase amplification

..... CHEN Bin, YANG Yin-mei, ZHONG Zhi-min, et al(955)

#### Preparation, identification and physiochemical study of egg yolk immunoglobulin (IgY) against *Toxoplasmosis gondii*

##### Adenosine kinase

..... WANG Liu-qing, ZHOU Yin-di, XU Hai-hong(958)

#### Effects of treadmill exercise on homocysteine in alzheimer's disease mice model

..... ZHENG Xian-hua, ZENG Li, LUO Guan-bin, et al(962)

#### Effects of Shuang Shi Tang on myocardial hypertrophy of reno-vascular hypertension rats

..... CHEN Jing, GAO Jie-chang, YANG Qun-yu(965)

#### Expression of IP-10 in childhood tuberculosis

..... LI Qi-feng, YU Liang, XIN Tao, et al(968)

#### Molecular epidemiology and meteorology of hand, foot and mouth disease in Guangzhou during a highly pandemic period

..... OU Zhi-ying, YIN Ying-xian, WU Shao-qing, et al(971)

#### The mechanism by Hepatitis B virus X protein induce p16<sup>INK4A</sup> promoter methylation

..... KUANG Jian-yu, YANG Lin, QU Zhi-jun(976)

#### Evolutionary analysis of neuraminidase gene of H7N9 influenza viruses isolated in Shenzhen

..... LÜ Xing, FANG Shi-song, WANG Xin, et al(980)

#### The differential diagnosis of iron deficiency anemia and anemia of chronic disease

..... HUANG Yan-feng, ZHENG Wang-chun, QIU Yan-bo, et al(984)

#### Cloning and expression of *Leptospira interrogans*

##### LipL32-LipL41 fusion gene

..... HU Yu-shan, XIAO Li-hong, LIU Qiao-yi, et al(987)

#### Prokaryotic expression and activity investigation for the NS2B<sub>F</sub>-NS3 protease complex of the type 2 dengue virus

..... LIN Wei-hong, LIN Yong-ping, YANG Xiao-han, et al(991)

#### Application of CLSI EP12-A2 protocol in the performance evaluation of clinical diagnosis assays of children with *Mycoplasma Pneumoniae* Pneumonia

..... HUANG Wu-jiao, Zhang Wei-tao, HUANG Xian-zhang, et al(995)

#### Immune colloidal gold infiltration technology detecting anti-cardiolipin antibody

..... CHEN Shu-Fen, LI kai, LI Xiang-xin, et al(997)

#### Yunfu children with acute respiratory tract infections common viral etiology investigation

..... YUAN Wei-hua, DENG Ting, FENG Yue-ping, et al(1000)

**Epidemiological characteristics of HPV infection and its gene subtypes in Zhuhai area**

..... ZHANG Zhen-lin, HUANG Lin, HUANG Jian-hong, et al(1004)

**Epidemiological investigation of a case of imported *Plasmodium malariae* infection of a 2 years old boy**

..... LI Xiao-heng, GAO Shi-tong, PEI Fu-quan, et al(1008)

**[Clinical Research]**

**Effect and the mechanism of salvianolate on platelet activation in patients with ACS**

..... CHENG Fei, LIU Xiao-feng, FENG Yu-yan(1012)

**Predictive value of ovarian response by transvaginal color doppler ultrasound on the day of Gn start-up**

..... CHEN Xia, CHEN Zhi-yi, WANG Wei-qun(1016)

**The correlation of serum levels of sFas, sFasL, 2-MG and cytokines and idiopathic thrombocytopenic purpura**

..... CHEN Yang-qing(1020)

**Effect of blood perfusion combined with dialysis in acute paraquat poisoning**

..... SU Xing, CAO Yu-fang, WANG Hua-jie, et al(1023)

**Impact of recombinant human brain natriuretic peptide on plasma brain natriuretic peptide level, norepinephrine level and cardiac function in patients with acute heart failure**

..... MA Zhao-chen, HUA Jun-feng, HAO Yan-min, et al(1026)

**Association of CIMT and HCY in individuals with higher normal blood pressure**

..... HAN Mei, XING Shu-fang(1030)

**Relationship between different oxygen concentration and the brain injury of full-term newborn recover from asphyxia**

..... LIANG Ming-ji, MA Guo-zhe, HAN Fang, et al(1033)

**The clinical effect of CME and traditional surgery for patients with colon cancer**

..... LIN You-wei(1037)

**Analysis of curative effect of Yiqi Yangyin Huoxue Decoction combined with metformin in treatment of type 2 diabetes mellitus**

..... XU Jing-tao, LIN Jing, CHEN Si-shu(1040)

**Timing of delivery on near-term or term pregnancy complicated with fetal growth restriction**

..... ZENG Hui-qian, LAI Yu-mian, SHI Lei(1043)

**Association of neck circumference with metabolic syndrome and FEV1**

..... ZHAO Si-wen, LI Wan-gen, WU Jun-jie(1046)

**Effect of different doses of rosuvastatin calcium on the treatment of dyslipidemic young patients with cerebral infarction**

..... FENG Zhi-xia, XU Zhe-tong, LÜ Zhi-kun, et al(1049)

**Impact of dexmedetomidine on vascular response and clinical outcomes of acute coronary syndrome**

..... DENG Yan-na, LI Yu-zhong(1052)

**Effect of olmesartan on morning blood pressure surge and microalbuminuria in hypertensive patients**

..... WANG Bin, GUAN Hong-bin, HE Kai-ping(1056)

**Application value of hysteroscopy combined transvaginal ultrasound in the diagnosis of cesarean scar defect**

..... LI San-qun(1059)

**Efficacy and Side effects of aspirin plus clopidogrel versus aspirin alone after coronary artery bypass grafting (CABG): A Meta-Analysis**

..... CAO Chen, TANG Qi-zhu, CHEN Rong, et al(1063)

**Inflammatory factors and PCT for the differential diagnosis of the nature of intracranial infection**

..... LIU Mei, LI Zi-yuan(1068)

**The clinical features of 449 imported malaria cases in Guangdong province**

..... HONG Wen-xin, WANG Jian, YANG Hui-qing, et al(1071)

**[Disease Control and Prevention]**

**Evaluation of colorectal cancer screening methods in Yuexiu district in Guangzhou**

..... ZHANG Ting, GONG Cheng-hua, DAI Li-ping, et al(1075)

**Cross sectional survey of visual development of preschool children in urban area of Shaoguan city**

..... XIAO Zhao-xia, FAN Kai-rong, CHEN Xiao-fang, et al(1079)

**Epidemiological characteristics of infectious diarrhea in Xi-xiang area, Shenzhen city during 2009-2015**

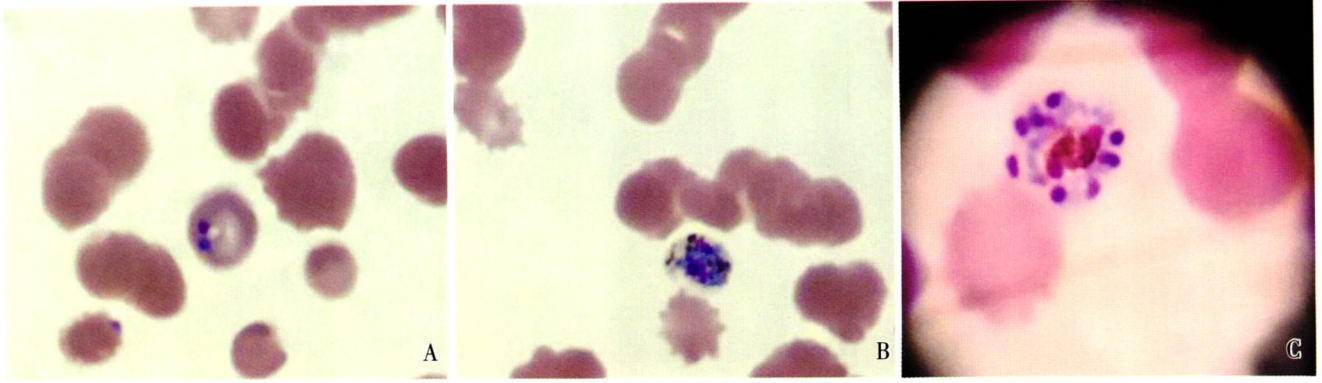
..... XU Zeng-sheng, CHANG Gai-feng, QIU Wang, et al(1083)

**[Review]**

**Progress on the studies of the effects of IL-25 on parasitic infectious diseases**

..... HOU Zhu-xiu, CHEN Ting-jin, HUANG Yan, et al(1086)

下图 1: 李晓恒, 高世同, 裴福全, 等. 一例输入性 2 岁幼儿感染三日疟的病例调查(正文见第 1008~1011 页)



注: A: 环状体; B: 大滋养体; C: 成虫裂殖体。

图 1 血片镜检结果(吉氏染色, ×1 000)

Fig.1 Plasmodium malariae in blood smears (Gimsa staining, ×1 000)

下图 1: 李奇凤, 余亮, 辛涛, 等. IP-10 在儿童结核病中的表达(正文见第 968~970, 1074 页)

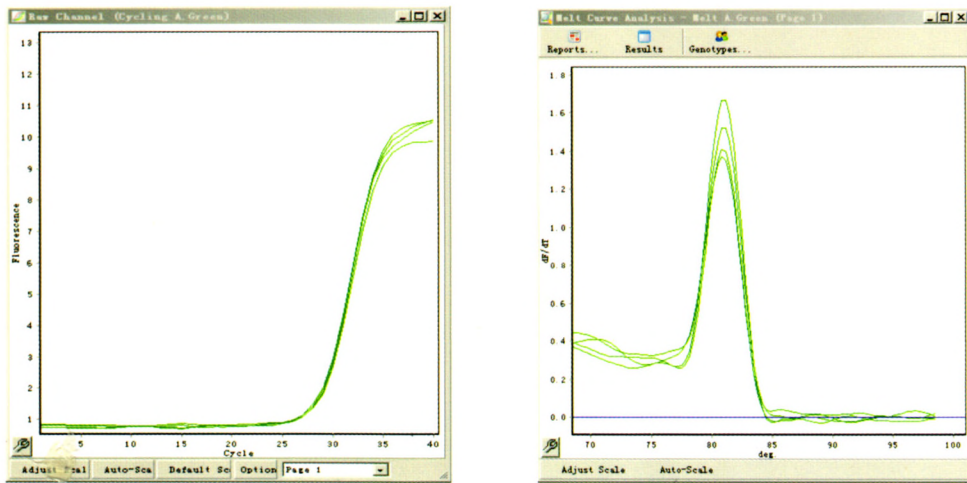


图 1 实时荧光定量 PCR 扩增曲线(左图)及溶解曲线(右图)

Fig.1 Amplification(left) and dissolution(right) curve of real-time fluorescence quantitative PCR

下图 1~2: 赵思文, 李万根, 吴君洁. 颈围与代谢综合征关系及和 FEV1 相关性(正文见第 1045~1048 页)

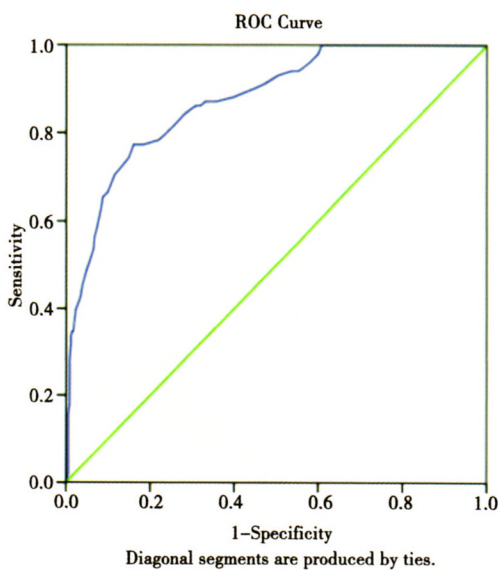


图 1 NC 诊断男性 MS 的 ROC 曲线

Fig.1 ROC curve for diagnosing MS by NC in male group

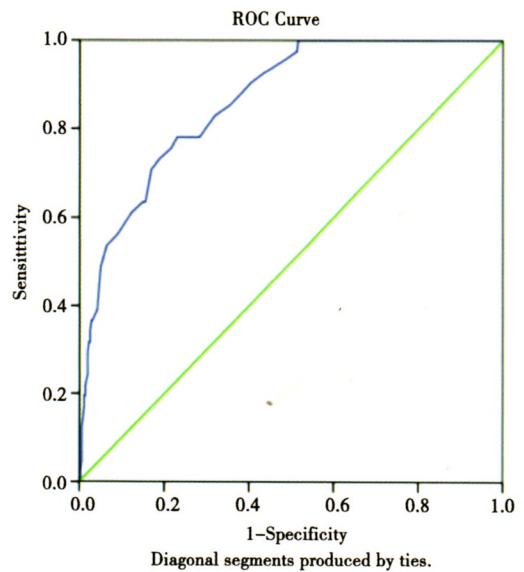


图 2 NC 诊断女性 MS 的 ROC 曲线

Fig.2 ROC curve for diagnosing MS by NC in female group