

# 热带医学杂志

REDAI

YIXUE

ZAZHI

2018年7月 第18卷 第7期 Jul. 2018 Vol. 18 No. 7

广东省科学技术协会主管  
广东省寄生虫学会 主办  
中华预防医学会

JTM

## JOURNAL OF TROPICAL MEDICINE

中国科技论文统计源期刊(中国科技核心期刊)

中国核心期刊(遴选)数据库全文收录期刊

RCCSE 中国核心学术期刊

美国化学文摘(CA)数据库源期刊

美国《乌利希国际期刊指南》(Ulrich's  
International Periodicals Directory)



ISSN 1672-3619



中华预防医学会系列杂志  
SERIAL JOURNAL OF CHINESE PREVENTIVE MEDICINE ASSOCIATION

7  
2018

# 热带医学杂志

REDAI YIXUE ZAZHI

月刊 2001年8月创刊 第18卷 第7期 2018年7月28日出版

主管:广东省科学技术协会  
主办:广东省寄生虫学会  
(广州市中山二路74号,510080)  
中华预防医学会  
(北京市朝阳区潘家园华威里25号,  
100021)  
承办:中山大学中山医学院寄生虫  
学研究所  
南方医科大学生物技术学院  
广东省疾病预防控制中心

标准连续出版物号

ISSN 1672-3619

CN 44-1503/R

主编:余新炳

编辑部主任:杨萍

编辑:热带医学杂志编委会

出版:广东热带医学杂志社

(广州市中山二路74号中山大学中山  
医学院内,510080)

电话/传真:(020) 87333191

http://rdyz.cbpt.cnki.net

E-mail: rdyxzz@163.com

发行范围 国内:广东热带医学杂志社

国外:中国国际图书贸易总

公司(北京399信箱,100044)

代号M724

广告许可证:粤广证字440000100031

印刷:天意有福科技股份有限公司

定价:每期15.00元,全年180.00元

本期责任编辑:陈水银 刘晓红

卢俊 杨萍

罗柳清

冯明钊(英文、香港)

麦乃歧(英文、香港)

2018年版版权归广东热带医学杂志社所有

本刊刊出的所有文章不代表本刊编委会的  
观点,除非特别声明

本刊如有印装质量问题,请向本刊编辑部调换

## 目次

### 【实验研究论著】

组胺上调THP-1细胞IL-37的表达

..... 任姣姣,管小丹,朱建冬,等(839)

长链非编码RNA RP11-367F23.2在脂多糖诱导炎症反应

中的表达..... 张轩,王湫,罗燕芬,等(842)

VEGF-C激活ERK1/2上调Slug蛋白表达促进宫颈癌细胞侵袭

..... 程杨,袁金,聂妙玲,等(846)

HLA-DR<sup>low</sup>CD33<sup>+</sup>CD11b<sup>+</sup>CD15<sup>+</sup>CD14<sup>-</sup>多型核粒细胞在

子宫内膜异位症中的作用

..... 陈海文,李锦城,雷爱华(850)

猫爪草多糖的理化性质及其对ANA-1细胞的

免疫调节作用..... 王会敏,何柯新,尚陈宇,等(855)

广东省江门地区G6PD缺乏症发生率及突变谱研究

..... 唐佳,曾钦龙,杨应松,等(860)

高通量测序SNP分型技术在无创性产前亲子鉴定中

的应用

..... 史萌,张核子,操利超,等(865)

$\alpha 1$ -抗胰蛋白酶对II型糖尿病的药效学研究

..... 陈献雄,张英,蒋伟,等(869)

紫菜多糖对哮喘大鼠模型树突状细胞CD80、CD86

表型表达的影响

..... 田冰,刘璟(873)

5例儿童急性巨核细胞白血病的实验室检测

..... 鲍丽娟,颜慕霞,顾晓琼,等(877)

高苯丙氨酸血症尿液生物标志物特征

..... 曾伟宏,欧阳海梅,谢汛杰,等(881)

|   |                    |
|---|--------------------|
| 微滴单细胞培养技术应用于白色念珠菌培养的研究 .....                    | 余一海,陈耀,石星亮,等(886)  |
| 淡豆豉异黄酮通过影响 Sox2 对 C3H10T1/2 细胞增殖和分化的影响<br>..... | 季泽娟,张春旭,郭占豪,等(891) |
| CAPN1 对胆囊癌细胞增殖、侵袭和迁移的影响<br>.....                | 牛志鹏,位亚秋,冯新献,等(897) |
| MUC1 和 MUC5AC 表达水平与食管癌预后的相关性 .....              | 宋振国,张占东,苏永林,等(902) |

### 【临床研究论著】

|  |                    |
|--|--------------------|
| 慢性乙型肝炎不同临床类型细胞因子差异 .....                     | 文雅嘉,苏迪,汪梦兰,等(907)  |
| sST2 与 Treg 数量及冠状动脉病变程度的相关性 .....            | 何非,盛建龙,王晓晨,等(913)  |
| 广州地区腹泻患儿肠致病性大肠杆菌的血清型及耐药性 .....               | 梁秉绍,黄艳梅,麦嘉良,等(919) |
| 39 例妊娠相关乳腺癌的病理特征及分子分型 .....                  | 杜瑞,郜红艺,郭玉娟,等(923)  |
| 血清 CysC、PLT 及 RDW 联合检测在 HDP 诊断中的价值 .....     | 郭彩娇,杨红玲,高飞,等(927)  |
| 广州地区 5 748 例孕妇血清 25-羟维生素 D 水平分析 .....        | 肖明锋,黄瑞玉,周晓莹,等(930) |
| 广州市先天性甲状腺功能减低症的风险因素 .....                    | 李蓓,陈倩瑜,贾雪芳,等(934)  |
| 861 例艾滋病合并马尔尼菲蓝状菌病的临床分析 .....                | 李英,卢斯汉,胡荣欣,等(939)  |
| 肺韦格肉芽肿误诊为肺脓肿 1 例报道 .....                     | 银玲,邓蓉,李欢(943)      |
| 螺内酯对肺源性心脏病合并快速型房性心律失常的疗效 .....               | 胡良巧,李寰,杨杏,等(946)   |
| EH 病人心率变异特征与血脂、C 反应蛋白、心肌酶及肾功能的相关性<br>.....   | 李健武,邓永嘉,林松青(951)   |
| hs-cTnT、MMP 和 BMP 评估 ACS 病情和近期预后的价值 .....    | 黄勇,李蔚华,尹虹,等(955)   |
| PCOS 患者血清 DBP 和 25(OH)D 水平与代谢特征的相关性<br>..... | 王勤洁,周强,赵欣(960)     |
| 奥曲肽序贯溴隐亭对 GH 型垂体瘤伴海绵窦侵袭的疗效 .....             | 李毅芳,李凌,蔡燕芝,等(963)  |
| 血清异黄酮、胰岛素和脂联素水平与甲状腺乳头状癌的相关性<br>.....         | 郑晖,宋双章,聂小妹(968)    |

### 【疾病预防控制论著】

|                                     |                    |
|-------------------------------------|--------------------|
| 2008-2017 年广州市登革热疫情流行趋势 .....       | 陆剑云,陈宗道,马蒙蒙,等(973) |
| 2017 年深圳市龙岗区感染性腹泻病原监测 .....         | 杨永平,刘凤仁,刘渠,等(977)  |
| 2016 年深圳市宝安区抗-HCV 阳性病例流行病学史分析 ..... | 饶展宏,詹志强,孙群露,等(981) |
| 空调送风中细菌总数和真菌总数的检测方法 .....           | 袁展红,刘绮明,吴灿权(986)   |

# JOURNAL OF TROPICAL MEDICINE

Monthly    Established in August, 2001    Volume 18    Number 7    Jul. 28, 2018

## Deputy Managing Director:

Guangdong Province Association of  
Science and Technology

## Affiliated Institution:

China Preventive Medicine  
Association; Guangdong Province  
Society of Parasitology

## Institute of Parasitology:

Zhongshan School of Medicine,  
Sun Yat-sen University

## SSN:

ISSN 1672-3619

CN 44-1503/R

## Editor in Chief:

YU Xin-bing

## Managing Director:

YANG Ping

## Edited & Published:

Editorial Board of Journal of Tropical  
Medicine, Zhongshan School of  
Medicine, Sun Yat-sen University,  
74 Zhongshan Road II, 510080,  
Guangzhou, P.R.China  
E-mail: rdyxzz@163.com  
Publication Date: 28 Per month

## Publish:

Editorial Board of Journal of  
Tropical Medicine

## Print:

Tian Yi Yofus Technology Co., Ltd.

Price: ¥ 15.0

## CONTENTS IN BRIEF

### [ Experiment Research ]

#### Upregulation of anti-inflammatory cytokine IL-37 by histamine in THP-1 cells

..... REN Jiao-jiao, GUAN Xiao-dan, ZHU Jian-dong, et al(839)

#### Expression and significance of long non coding RNA RP11-367F23.2 in lipopolysaccharide induced inflammatory response

..... ZHANG Xuan, WANG Hao, LUO Yan-fen, et al(842)

#### VEGF-C activates ERK1/2 and up-regulates slug protein expression to promote cervical cancer invasion

..... CHENG Yang, YUAN Jin, NIE Miao-ling, et al(846)

#### The significance of HLA-DR<sup>low</sup>CD33<sup>+</sup>CD11b<sup>+</sup>CD15<sup>+</sup>CD14<sup>-</sup> polymorphonuclear neutrophils in endometriosis

..... CHEN Hai-wen, LI Jin-cheng, LEI Ai-hua(850)

#### Physicochemical properties of PRT and its immunoregulatory effect on ANA-1 cells

..... WANG Hui-min, HE Ke-xin, SHANG Chen-yu, et al(855)

#### The prevalence and mutations distribution of G6PD deficiency in Jiangmen region, Guangdong province

..... TANG Jia, ZENG Qin-long, YANG Ying-song, et al(860)

#### The application of high-throughout sequencing of SNP genotyping technology for noninvasive prenatal paternity test

..... SHI Meng, ZHANG He-zi, CAO Li-chao, et al(865)

#### Pharmacodynamic study of $\alpha$ 1- antitrypsin in the treatment of type II diabetes mellitus

..... CHEN Xian-xiong, ZHANG Ying, JIANG Wei, et al(869)

#### Effect of porphyra polysaccharide on expression of CD80 and CD86 in dendritic cells of rat asthma model

..... TIAN Bing, LIU Jing(873)

#### The laboratory examination in 5 children with acute megakaryoblastic leukemia

..... BAO Li-juan, YAN Mu-xia, GU Xiao-qiong, et al(877)

#### Analysis of urinary biomarkers of hyperphenylalaninemia

... ZENG Wei-hong, OUYANG Hai-mei, XIE Xun-jie, et al(881)

#### The technology of micro-drop single-cell culture was applied on the study of *Candida albicans*

..... YU Yi-hai, CHEN Yao, SHI Xing-liang, et al(886)

#### Influence of fermented soybean isoflavone on C3H10T1/2 cell proliferation and differentiation via Sox2

..... JI Ze-juan, ZHANG Chun-xu, GUO Zhan-hao, et al(891)

#### Influences of CAPN1 on proliferation, invasion and migration of gallbladder carcinoma cell

..... NIU Zhi-peng, WEI Ya-qiu, FENG Xin-xian, et al(897)

**Expressions and clinical significances of MUC1 and MUC5AC in esophageal cancer**

..... SONG Zhen-guo, ZHANG Zhan-dong, SU Yong-lin, et al(902)

**[Clinical Research]**

**Different molecular status in different clinical types of chronic hepatitis B**

..... WEN Ya-jia, SU Di, WANG Meng-lan, et al(907)

**Relationship between expression of soluble growth stimulating factor 2 and regulatory T cells and coronary artery lesions**

..... HE Fei, SHENG Jian-long, WANG Xiao-chen, et al(913)

**Serotype and antimicrobial resistance of enteropathogenic *Escherichia coli* isolated from pediatric patients with diarrhea in Guangzhou**

..... LIANG Bing-shao, HUANG Yan-mei, MAI Jia-liang, et al(919)

**Analysis of clinicopathological features and molecular subtypes in 39 cases of pregnancy associated breast cancer**

..... DU Rui, GAO Hong-yi, GUO Yu-juan, et al(923)

**The value of combined detection of serum CysC, PLT and RDW for the diagnosis of hypertension disorders complicating pregnancy**

..... GUO Cai-jiao, YANG Hong-ling, GAO Fei, et al(927)

**Analysis of the 25-hydroxy vitamin D levels in 5 748 cases pregnant women in Guangzhou region**

..... XIAO Ming-feng, HUANG Rui-yu, ZHOU Xiao-ying, et al(930)

**Analysis of risk factors for congenital hypothyroidism in Guangzhou**

..... LI Bei, CHEN Qian-yu, JIA Xue-fang, et al(934)

**Clinical analysis on 861 cases of acquired immune deficiency syndrome complicated with penicilliosis marneffei infection**

..... LI Ying, LU Si-han, HU Rong-xin, et al(939)

**Pulmonary abscess was misdiagnosed as pulmonary Wegener's granuloma-A case report**

..... YIN Lin, DENG Rong, LI Huan(943)

**Effects of spironolactone on rapid atrial arrhythmia in patients with pulmonary heart disease**

..... HU Liang-qiao, LI Huan, YANG Xing, et al(946)

**Correlation between heart rate variability and serum lipids, C-reactive protein, myocardial enzymes and renal function in patients with essential hypertension**

..... LI Jian-wu, DENG Yong-jia, LIN Song-qing(951)

**The value of hs-cTnT, MMP and BMP in assessing the condition of ACS and its short-term prognosis**

..... HUANG Yong, LI Wei-hua, YIN Hong, et al(955)

**Relationship between the D binding protein, serum 25(OH)D and the metabolic characteristic in patients with polycystic ovary syndrome**

..... WANG Qin-jie, ZHOU Qiang, ZHAO Xin(960)

**Effect of octreotide sequential bromocriptine in treatment of growth hormone pituitary adenoma with cavernous sinus**

..... LI Yi-fang, LI Ling, CAI Yan-zhi, et al(963)

**Relationships of serum isoflavones, insulin and adiponectin with thyroid carcinoma risk**

..... ZHENG Hui, SONG Shuang-zhang, NIE Xiao-mei(968)

**[Disease Control and Prevention]**

**Epidemic trend of dengue fever in Guangzhou city from 2008 to 2017**

..... LU Jian-yun, CHEN Zong-qiu, MA Meng-meng, et al(973)

**Surveillance for the pathogens of infectious diarrhea in Longgang district of Shenzhen, 2017**

..... YANG Yong-ping, LIU Feng-ren, LIU Qu, et al(977)

**Epidemiological history analysis of anti-HCV positive cases in Bao'an district of Shenzhen, 2016**

..... RAO Zhan-hong, ZHAN Zhi-qiang, SUN Qun-lu, et al(981)

**Investigation on the detection of total bacteria count and total epiphyte count in supply air**

..... YUAN Zhan-hong, LIU Qi-ming, WU Can-quan(986)

下图1:田冰,刘璟. 紫菜多糖对哮喘大鼠模型树突状细胞CD80、CD86表型表达的影响(正文见第873~876页)

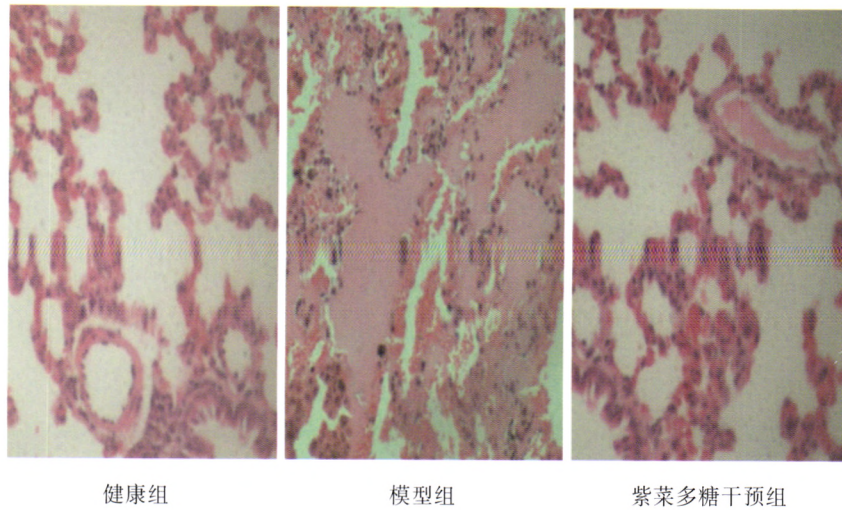
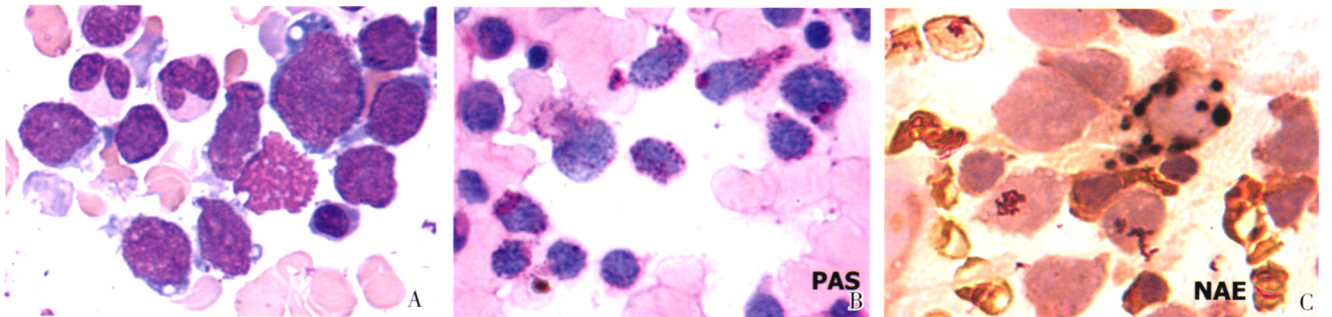


图1 各组大鼠肺黏膜病理检查情况(HE,×200)

Fig.1 Pathological situation of the rat lung mucosa in each group (HE,×200)



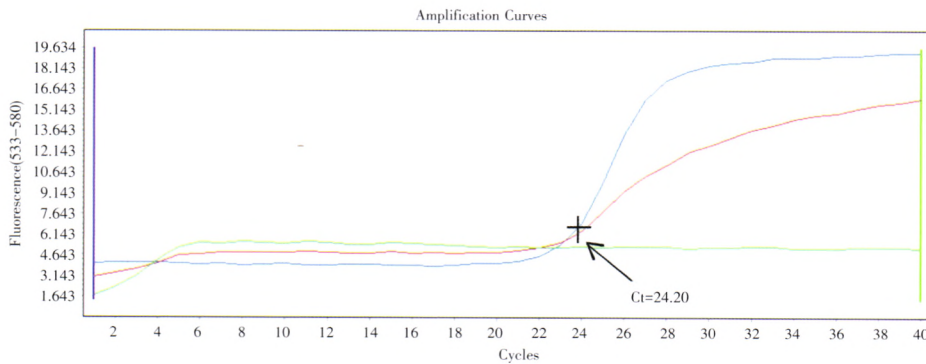
下图1,3:鲍丽娟,颜慕霞,顾晓琼,等. 5例儿童急性巨核细胞白血病的实验室检测(正文见第877~880页)



注:A为骨髓细胞涂片(瑞氏染色×1 000);B为PAS染色(×1 000);C为NAE染色(×1 000)。

图1 骨髓涂片见原始巨核细胞及细胞化学染色

Fig.1 Megakaryoblastic cells, PAS reaction and NAE reaction



注:蓝色曲线为患儿MLL-AF9融合基因曲线;红色曲线为阳性对照;绿色曲线为阴性对照。当反应Ct值≤33时,判定为阳性反应。

图3 FQ-RT-PCR检测MLL-AF9融合基因的结果

Fig.3 FQ-RT-PCR analysis result of the MLL-AF9 fusion gene