



QK2015701-3619
CN 44-1503/R

热带医学杂志

REDAI

YIXUE

ZAZHI

2020年3月 第20卷 第3期 Mar. 2020 Vol. 20 No. 3

广东省科学技术协会主管
广东省寄生虫学会 主办
中华预防医学会

JOURNAL OF TROPICAL MEDICINE

中国科技论文统计源期刊(中国科技核心期刊)

中国核心期刊(遴选)数据库全文收录期刊

RCCSE 中国核心学术期刊

美国化学文摘(CA)数据库源期刊

美国《乌利希国际期刊指南》(Ulrich's

International Periodicals Directory)



ISSN 1672-3619



中华预防医学会系列杂志

SERIAL JOURNAL OF CHINESE PREVENTIVE MEDICINE ASSOCIATION

万方数据



2020

热带医学杂志

REDAI YIXUE ZAZHI

月刊 2001年8月创刊 第20卷 第3期 2020年3月28日出版

主管:广东省科学技术协会
主办:广东省寄生虫学会
(广州市中山二路74号,510080)
中华预防医学会
(北京市朝阳区潘家园华威里25号,
100021)
承办:中山大学中山医学院寄生虫
学研究所
南方医科大学生物技术学院
广东省疾病预防控制中心

标准连续出版物号

ISSN 1672-3619

CN 44-1503/R

主编:余新炳

编辑部主任:杨萍

编辑:热带医学杂志编委会

出版:广东热带医学杂志社

(广州市中山二路74号中山大学中山
医学院内,510080)

电话/传真:(020) 87333191

http://rdyz.cbpt.cnki.net

E-mail: rdyxzz@163.com

发行范围 国内:广东热带医学杂志社

国外:中国国际图书贸易总

公司(北京399信箱,100044)

代号M724

广告许可证:粤广证字440000100031

印刷:天意有福科技股份有限公司

定价:每期15.00元,全年180.00元

本期责任编辑:陈水银 罗柳清

刘晓红 卢俊

杨萍

冯明钊(英文、香港)

麦乃歧(英文、香港)

2020年版权归广东热带医学杂志社所有

本刊刊出的所有文章不代表本刊编委会的
观点,除非特别声明

本刊如有印装质量问题,请向本刊编辑部调换

目次

COVID-19防治专栏

全国新型冠状病毒肺炎发病情况室模型分析及疫情进展

短期预测

..... 吉兆华,陆振华,刘昆,等(279)

武汉某高校大学生对新型冠状病毒肺炎防疫知识

认知及心理状态的调查

..... 匡征凌,郭凯文,刘蔚珂,等(283)

新型冠状病毒肺炎防治药物研究进展

..... 李思远,孙希(286)

新型冠状病毒肺炎暴发疫情下流行病学关键概念理解偏差

及其对防控的影响

..... 梁梓晖,张亚丽,陆泽源,等(289)

新型冠状病毒肺炎疫情输入城市的风险隐患及应对建议

..... 李铁钢(292)

新型冠状病毒肺炎的实验室检查及临床实验室的管理

..... 朱名超,朱娅(294)

硕博专栏论著

乙型肝炎病毒B、C、D基因型AAV-HBV小鼠模型构建与

病毒学特征比较

..... 郑晓文,冯成千,李华鹏,等(297)

日本血吸虫不同感染程度对小鼠肠道菌群的影响

..... 宋秋月,张亦舒,张蓓蓓,等(303)

miR-133b在紫檀芪抑制肾脏纤维化的作用研究

..... 李思睿,赵迅霞,张玲,等(309)

日本血吸虫感染小鼠脾脏CD3⁺CD4⁺CD25⁺Foxp3⁺Treg细胞及其

亚群的动态变化

..... 王玲玲,李皓,廖瑶,等(314)

分离日本血吸虫感染小鼠模型肝星状细胞的改良方法

..... 张亦舒,宋秋月,汤文燕,等(319)

- 重组 GCRV-VP6 枯草杆菌芽孢口服免疫对草鱼肝肠功能影响 边青,曾伟伟,李蔚筠,等(323)
- 艾滋病合并肺孢子菌肺炎双重感染的影响因素分析 周欧路,徐月香,黄运轩,等(328)
- 鼻咽脱落细胞 EB 病毒 DNA 在鼻咽癌诊断中的价值 陈耿杭,谢尚杭,林初阳,等(332)
- 社区组织服务对艾滋病抗病毒治疗者服药依从性的影响
..... 范笑嫣,刘聪,钟海丹,等(336)

实验研究论著

- 基于 Notch 通路研究南蛇藤提取物对非小细胞肺癌血管生成影响 郜娜,杨庆宇(341)
- 温湿度对携带沃尔巴克氏体白纹伊蚊卵孵化率的影响 杨翠,奚志勇,胡志勇(346)
- 白藜芦醇对弓形虫感染小鼠的治疗效果及毒副作用研究 赵雅文,郑萌,李涛,等(350)
- 骨髓间充质干细胞对骨质疏松性骨折大鼠愈合的影响 杨广杰,陈有,王永胜,等(354)
- miR-1-3p 靶向 TNKS2 抑制宫颈癌细胞增殖、迁移和侵袭 陈辰,徐璞璞,冯霞,等(359)
- 广州地区献血者 HBV 核酸检测非重复反应性样本确认及追踪研究 林诗雅,王湜,杜荣松,等(364)
- 血管紧张素原基因多态性及相关危险因素与原发高血压的关联研究
..... 利耀辉,刘览,林伟权,等(368)
- 抗-CD36 抗体引起的血小板输注无效及诊疗策略 王嘉励,陈扬凯,罗广平,等(372)

临床研究论著

- 血清中 TGF- β 1、MMP-1 表达水平联合 FibroScan 对乙肝肝纤维化诊断价值
..... 曾震军,李墨航,王新亭(376)
- 药物联合治疗糖尿病对患者血清胰岛素、葡萄糖、白细胞计数及淋巴细胞水平的影响
..... 吴苏豫,赵建林,熊承云,等(380)
- 瑞舒伐他汀联合盐酸美金刚对 AD 患者血清 IL-1、IL-6 和 IL-10 水平的影响
..... 黄一苇,张昊,李灵真(384)
- CD4⁺T 细胞极低艾滋病患者合并肺结核 21 例临床分析 陈礼运,黄芬,裘星凤(387)
- 疏壅通络方联合腹针疗法对肥胖 2 型糖尿病患者疗效观察 李慧娟,胡彦彦,李艳敏(391)
- 呼吸道合胞病毒感染婴幼儿潮气呼吸肺功能的变化 马克,黄尧,王开梅(395)
- 乙醛脱氢酶 2 基因多态性与慢性乙型肝炎和酒精性肝病之间的关系
..... 熊志娇,李德昌,范红顺,等(400)
- 血清 IL-6 诊断乙型肝炎肝硬化肾功能早期损害的意义 姜烜星,王涛,赵岩,等(404)
- 2015-2017 年广州某医院儿童腹泻患者沙门菌感染的血清型和耐药性
..... 谢永强,魏艳,邓秋连,等(407)

疾病预防控制论著

- 2018 年乌鲁木齐市手足口病病原学检测结果分析 樊旭成,房师松,陈薇,等(410)
- 烟台市 1 954 例 HIV 抗体初筛阳性血清复检及确证结果分析 丁学斌,徐迎春,程晓松,等(414)
- 2016 年中山市成人主要慢性病流行特征与危险因素分析 林海,蔡志成,夏生林,等(417)
- 广州市某社区居民干眼症状调查与大气 PM_{2.5} 颗粒浓度相关性研究 施洁,石同幸,吴燕,等(422)

JOURNAL OF TROPICAL MEDICINE

Monthly Established in August, 2001 Volume 20 Number 3 Mar. 28, 2020

Deputy Managing Director:

Guangdong Province Association of
Science and Technology

Affiliated Institution:

China Preventive Medicine
Association; Guangdong Province
Society of Parasitology

Institute of Parasitology:

Zhongshan School of Medicine,
Sun Yat-sen University

SSN:

ISSN 1672-3619

CN 44-1503/R

Editor in Chief:

YU Xin-bing

Managing Director:

YANG Ping

Edited & Published:

Editorial Board of Journal of Tropical
Medicine, Zhongshan School of
Medicine, Sun Yat-sen University,
74 Zhongshan Road II, 510080,
Guangzhou, P.R.China
E-mail: rdyxzz@163.com
Publication Date: 28 Per month

Publish:

Editorial Board of Journal of
Tropical Medicine

Print:

Tian Yi Yofus Technology Co., Ltd.

Price: ¥ 15.0

CONTENTS IN BRIEF**[COVID-19 Prevention]**

**SIR model analysis and short-term prediction of epidemic
progress of corona virus disease 2019 in China**

..... JI Zhao-hua, LU Zhen-hua, LIU Kun, et al(279)

**Investigation of knowledge cognition status and mentality
status of college students in Wuhan on epidemic
prevention of COVID-19**

..... KUANG Zheng-ling, GUO Kai-wen, LIU Wei-ke, et al(283)

**Research progress of the preventive and therapeutic drugs of
COVID-19**

..... LI Si-yuan, SUN Xi(286)

**Understanding deviation of epidemiological key concept and
its impact on prevention and control under the COVID-19
outbreak**

..... LIANG Zi-hui, ZHANG Ya-li, LU Ze-yuan, et al(289)

**Potential risks of corona virus disease 2019 in case- imported
city and countermeasures**

..... LI Tie-gang(292)

**COVID-19 laboratory examination and clinical laboratory
management**

..... ZHU Ming-chao, ZHU Ya(294)

[Basic Research]

**Construction of hepatitis B virus B, C, D AAV-HBV mouse
models and comparison of virological features**

..... ZHENG Xiao-wen, FENG Cheng-qian, LI Hua-peng, et al(297)

**Effects of different infection degrees of *Schistosoma japonicum*
on gut microbiota of mice**

... SONG Qiu-yue, ZHANG Yi-shu, ZHANG Bei-bei, et al(303)

Effect of miR-133b on pterostilbene inhibiting renal fibrosis

..... LI Si-rui, ZHAO Xun-xia, ZHANG Ling, et al(309)

**Dynamic changes of CD3⁺CD4⁺CD25⁺Foxp3⁺Tregs and their
subsets in the spleens of mice infected with *Schistosoma
japonicum***

..... WANG Ling-ling, LI Hao, LIAO Yao, et al(314)

**An improved method for isolation of hepatic stellate cells in
a mouse liver fibrosis model induced by *Schistosoma
japonicum*-infection**

... ZHANG Yi-shu, SONG Qiu-yue, TANG Wen-yan, et al(319)

**Effects of orally administrated *Bacillus subtilis* spores expressing
VP6 protein from GCRV on liver and intestine of grass carp**

..... BIAN Qing, ZENG Wei-wei, LI Wei-yun, et al(323)

**Analysis of the influencing factors of AIDS combined with
pneumocystis pneumonia**

... ZHOU Ou-lu, XU Yue-xiang, HUANG Yun-xuan, et al(328)

- Value of Epstein-Barr virus DNA in nasopharyngeal exfoliated cells in diagnosis of nasopharyngeal carcinoma**
 CHEN Geng-hang, XIE Shang-hang, LIN Chu-yang, et al(332)
- Impact of community-based organization services on adherence to medication among HIV/AIDS patients**
 FAN Xiao-yan, LIU Cong, ZHONG Hai-dan, et al(336)
- [Experiment Research]**
- Study on the effect of *Celastrus orbiculatus* extract on angiogenesis of non-small cell lung cancer based on Notch pathway**
 GAO Na, YANG Qing-yu(341)
- Effect of temperature and humidity on egg hatch rate of triple-*Wolbachia*-infected *Aedes albopictus***
 YANG Cui, XI Zhi-yong, HU Zhi-yong(346)
- Study on the therapeutic effect and side effects of resveratrol on acute *Toxoplasma gondii* infected mice**
 ZHAO Ya-wen, ZHENG Meng, LI Tao, et al(350)
- Effect of bone marrow mesenchymal stem cells on fracture healing in osteoporotic rats**
 YANG Guang-jie, CHEN You, WANG Yong-sheng, et al(354)
- miR-1-3p targets TNKS2 to inhibit proliferation, migration and invasion of cervical cancer cells**
 CHEN Chen, Xu Ying-ying, FENG Xia, et al(359)
- The study on the confirmation and tracking of unrepeatably reactive samples in HBV NAT blood screening in Guangzhou**
 LIN Shi-ya, WANG Hao, DU Rong-song, et al(364)
- Association of angiotensinogen gene polymorphisms and related risk factors with essential hypertension**
 LI Yao-hui, LIU Lan, LIN Wei-quan, et al(368)
- Ineffective platelet transfusion caused by anti-CD36 antibody and the effective treatment strategy**
 WANG Jia-li, CHEN Yang-kai, LUO Guang-ping, et al(372)
- [Clinical Research]**
- Evaluation of serum levels of TGF- β 1 and MMP-1 combined with FibroScan in the diagnosis of liver fibrosis caused by hepatitis B**
 ZENG Zhen-jun, LI Mo-hang, WANG Xin-ting(376)
- Effect of combined drug therapy on serum insulin, glucose, WBC and lymphocyte levels in patients with diabetes mellitus**
 WU Su-yu, ZHAO Jian-lin, XIONG Cheng-yun, et al(380)
- Effect of rosuvastatin combined with memantine hydrochloride on the levels of IL-1, IL-6 and IL-10 in patients with Alzheimer disease**
 HUANG Yi-wei, ZHANG Hao, LI Ling-zhen(384)
- Analysis of clinical features of 21 AIDS patients with very low CD4⁺ T cell count and coinfecting with pulmonary tuberculosis**
 CHEN Li-yun, HUANG Fen, QIU Xing-feng(387)
- The observation of shuqitongluo recipe combined with abdominal acupuncture on obese type 2 diabetic patients**
 LI Hui-juan, HU Yan-yan, LI Yan-min(391)
- Changes in tidal breath pulmonary function of infants with respiratory syncytial virus infection**
 MA Ke, HUANG Yao, WANG Kai-mei(395)
- Association analysis of aldehyde dehydrogenase 2 gene polymorphism with chronic hepatitis B and alcoholic liver disease**
 XIONG Zhi-jiao, LI De-chang, FAN Hong-shun, et al(400)
- The significance of serum IL-6 in diagnosis of early impairment of renal function in hepatitis B cirrhosis**
 JIANG Xuan-xing, WANG Tao, ZHAO Yan, et al(404)
- Serotype and drug resistance of *Salmonella* infection among pediatric diarrhea patients in a tertiary hospital in Guangzhou**
 XIE Yong-qiang, GUO Yan, DENG Qiu-lian, et al(407)
- [Disease Control and Prevention]**
- Etiology analysis for hand, foot and mouth disease in Urumuqi in 2018**
 FAN Xu-cheng, FANG Shi-song, CHEN Wei, et al(410)
- Analysis of reexamination and conclusive tests for 1 954 HIV antibody positive serums in Yantai from 2014 to 2018**
 DING Xue-bin, XU Ying-chun, CHENG Xiao-song, et al(414)
- Analysis on the epidemic characteristics and risk factors of Zhongshan adults chronic diseases in 2016**
 LIN Hai, CAI Zhi-cheng, XIA Sheng-lin, et al(417)
- Correlation between dry eye symptoms and the concentration of PM_{2.5} from a community in Guangzhou**
 SHI Jie, SHI Tong-xing, WU Yan, et al(422)

下图1,3~5: 宋秋月,张亦舒,张蓓蓓,等.日本血吸虫不同感染程度对小鼠肠道菌群的影响(正文见第303-308页)

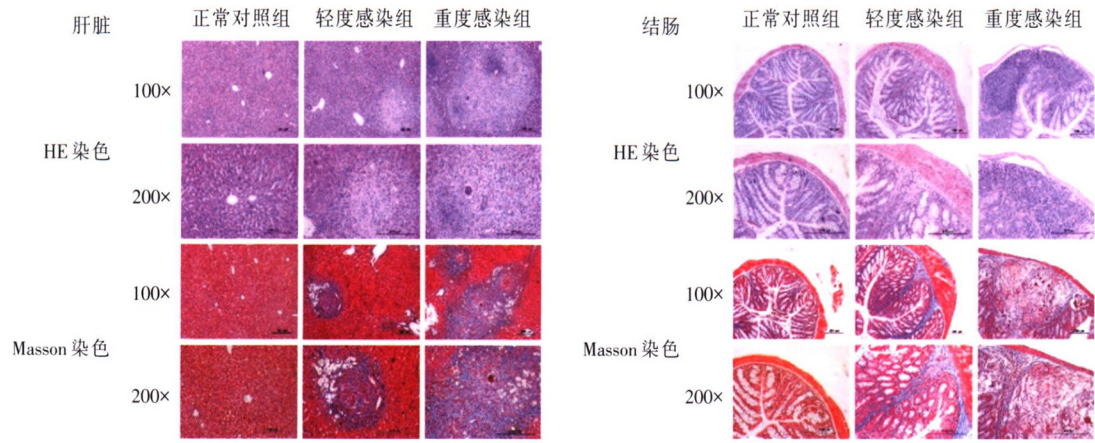


图1 日本血吸虫感染小鼠肝脏和结肠病理结果

Fig.1 Hepatic and colonic pathological changes in *S.japonicum*-infected mice

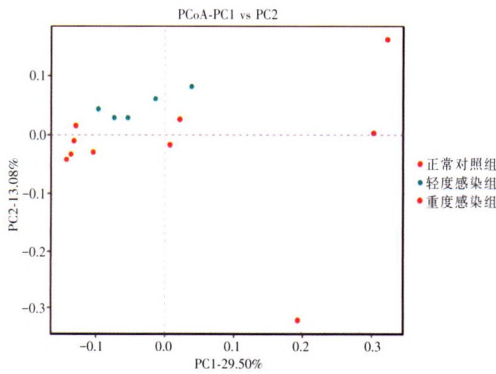


图3 小鼠肠道菌群 PCoA 分析

Fig.3 The PCoA analysis of gut microbiota in mice

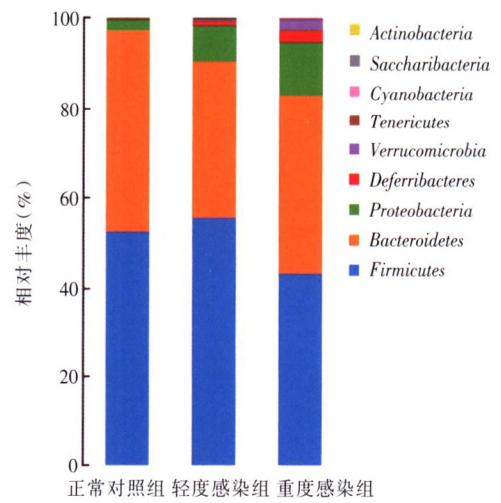


图4 门水平上的物种相对丰度

Fig.4 Relative abundance of species at the phylum level

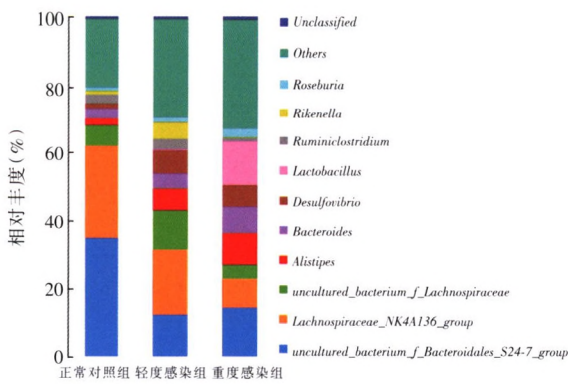
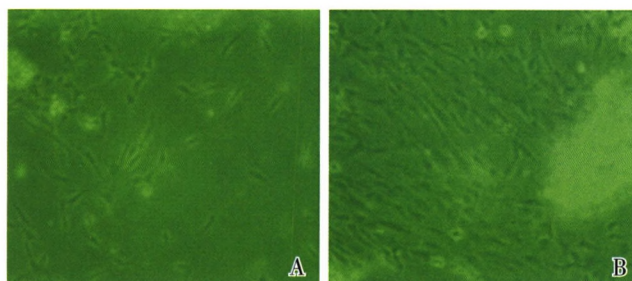


图5 属水平上的物种相对丰度

Fig.5 Relative abundance of species at the genus level

下图1: 杨广杰,陈有,王永胜,等.骨髓间充质干细胞对骨质疏松性骨折大鼠愈合的影响(正文见第354-358页)



注:A为细胞培养24 h后;B为细胞培养3代后。

图1 骨髓间充质干细胞不同培养时段细胞形态 (×200)

Fig.1 Cell morphology of bone marrow mesenchymal stem cells in different culture periods (×200)