



(1987年创刊)
月刊
第24卷第12期
2010年12月总第132期

主管:四川省科学技术厅
主办:四川省科技促进发展研究中心

主 编:赵毅峰
副 主 编:王 楠 辜 萍
编 辑:张京辉 李映果
秦 颖 唐 杰
李 镜 冉春红
特 约 编 审:张 勇
英 文 责 编:林 曦
审 读:冯红英

目 次

管理科学

- 治理对政府投资项目绩效作用机理的实证研究
——以企业型代建项目为例 杜亚灵,尹贻林(1)
- 互补型竞合关系中合作结构选择偏好的实证研究
..... 李世清,龙 勇(7)
- 信息化创新、内部控制和操作风险控制的相关性研究
..... 张同建,吕宝林(13)
- 产品市场竞争、政府控制与投资效率 徐一民,张志宏(19)
- 基于纵向产品差异化市场的风险投资退出决策研究
..... 周孝华,柏政成(24)
- 基于全面薪酬的科技工作者激励组合优化研究
..... 张 健,张再生,赵丽华(27)

科技与经济

- 全球创意指数的比较与分析 陈 颖,龚 雪,高长春(30)
- 基于TAM的百度百科用户参与意向的影响因素研究
..... 常 静,杨建梅,欧瑞秋(34)
- 基于超效率DEA的城市知识资本利用效率评价
..... 金水英(38)
- 网络关系强度与产业集群竞争优势关系的实证研究
..... 闫 莹,陈建富(43)
- 知识链组织之间冲突类型分析与冲突管理策略探讨
..... 王 实,顾 新,杨立言(48)
- 组织理论视角的知识共享影响因素整合模型研究
——基于湖南省IT企业的实证分析
..... 雷志柱,丁长青(52)

战略与对策

- 中国CO₂排放量变化的影响因素分解研究
——基于改进的Kaya等式与LMDI分解法
..... 赵 奥,武春友(55)
- 我国居民消费对资源环境压力的综合分析 刘 倩(60)
- 寻租影响区域矿山资源开采时序的动力学模型
..... 刘香玲,魏晓平(66)

区域发展

- 中国区域物流业与经济发展协调度研究
——基于复合系统模型与30个省区面板数据 张毅,陈圻(70)
- 区域物流能力与区域经济发展的典型相关分析
——基于全国面板数据 李全喜,金凤花,孙磐石(75)
- 区域消费文化观念差异性研究
——基于广东省和甘肃省的实证分析 董雅丽,葛庆,穆瑞芳(80)
- 环境规制对经济开放的影响
——基于江苏省数据的实证分析 庄莹莹,龙如银(85)

农村经济

- 农户合作经济组织的增收效应分析:
——一个新的委托-代理视角 浦徐进,吴林海(89)
- 返乡农民工经验异质性与团队化创业实证研究 郭群成,郑少锋(93)
- 农民工就业信息获取的影响因素研究
——基于243位农民工的理论与实证分析 王建华,李录堂(98)

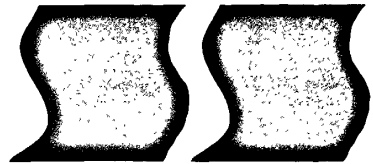
企业管理

- 寡头垄断市场下的企业技术创新策略选择研究 杨建君,张钊(103)
- 中国情境下企业社会责任量表的修正与信效度检验 何显富,蒲云,朱玉霞等(106)
- 中小企业要素导向型创新形态的演化机理
——福建海源自动化机械股份有限公司案例研究 吴佳音,朱斌(111)
- 上市公司隐性税负对其股票收益的影响研究
——基于隐性税率与股票收益率的VAR模型分析 袁宏伟(117)

理论探讨

- 供应链质量控制与协调研究评析 刘强,苏秦(123)
- 投资组合信用风险的测度和优化
——基于Copula理论 吴恒煜,李冰,严武(128)
- 购物价值视角的C2C满意度实证分析 李海英(134)
- 女大学生情绪智力水平影响研究 马琳慧(140)
- 关于加强团队执行力的几点思考 邓冬梅(143)

期刊基本参数:CN51-1268/G3*1987*b*A4*144*zh*P*¥10.00*2000*31*2010-12



Soft Science

编辑:《软科学》编辑部
 出版:《软科学》编辑部
 印刷:四川煤田地质制图印刷厂
 总发行:四川省报刊发行局
 邮发代号:62-61
 广告经营许可证号:5100004000311
 发行范围:公开发行
 订 阅:全国各地邮局
 或本刊编辑部
 网上在线投稿://www.xuxi.cb.cnki.net
 编辑部地址:成都市人民南路四段
 11号5楼
 邮政编码:610041
 电 话:(028)85221835
 传 真:(028)85221835
 Http://www.xuxi.chinajournal.net.cn
 E-mail:ruanexue@sina.com
 rkx@periodicals.net.cn
 国际标准连续出版物号:ISSN 1001-8409
 国内统一连续出版物号:CN 51-1268/G3
 出版日期:2010年12月
 每期定价:10.00元

SOFT SCIENCE

Monthly

NO. 12 2010 (Total No. 132)

Contents

Management Science

- Empirical Research on the Influencing Mechanism of Governance to the Management Performance of Government Investment Project
—Taking Enterprise Construction-agent Projects for an Example *DU Ya-ling, YIN Yi-lin*(1)
- Empirical Study of the Cooperative Structure Preference in Complementary Co-opetition *LI Shi-qing, LONG Yong*(7)
- Research on Correlation among Informatization Innovation, Inner Control and Operation Risk Control
..... *ZHANG Tong-jian, LV Bao-lin*(13)
- Product Market Competition, Government Control and Investment Efficiency *XU Yi-min, ZHANG Zhi-hong*(19)
- Research on Venture Capital Exit Decision Based on the Vertical Product Differentiation
..... *ZHOU Xiao-hua, BAI Zheng-cheng*(24)
- Study on Incentive Portfolio and Optimization of S&T Professionals Based on Comprehensive Salary
..... *ZHANG Jian, ZHANG Zai-sheng, ZHAO Li-hua*(27)

Science and Economy

- Comparison and Analysis of Global Creativity Index *CHEN Ying, GONG Xue, GAO Chang-chun*(30)
- Research on Influencing Factors of Baidupedia Users' Participating Intention Based on TAM
..... *CHANG Jing, YANG Jian-mei, OU Rui-qiu*(34)
- Evaluation on Utilization Efficiency of Urban Intellectual Capital Based on Super-efficiency DEA *JIN Shui-ying*(38)
- Empirical Study on the Relationship between the Strength of Network Ties and Competitive Advantage of Industrial Cluster
..... *YAN Ying, CHEN Jian-fu*(43)
- Analysis of Conflict Types and Tactics of Conflict Management among Organizations in Knowledge Chain
..... *WANG Shi, Gu Xin, YANG Li-yan*(48)
- Study on Integrated Model of Influencing Factors of Knowledge Sharing from the Perspective of the Organization Theory-Empirical Anal-
ysis of IT Enterprises in Hunan Province *LEI Zhi-zhu, DING Chang-qing*(52)

Strategy and Countermeasure

- Analysis of Decomposition of Influencing Factors of Variation in CO₂ Emission of China
—Based on Improved Kaya Identity and LMDI Method *ZHAO Ao, WU Chun-you*(55)
- Comprehensive Analysis of Resource-environment Pressure from Consumption of Chinese Citizens *LIU Qian*(60)
- A Dynamic Model of Timing Sequence of Regional Mineral Resource Exploitation Influenced by Rent Seeking
..... *LIU Xiang-ling, WEI Xiao-ping*(66)

Regional Development

- Research on Coordinating Degree of Regional Logistics Industry and Economic Development in China
—Based on the Compound System Model and Panel Data of 30 Provinces *ZHANG Yi, CHEN Qi*(70)
- Analysis of Canonical Correlation between Regional Logistics Capability and Regional Economic Development
—Based on National Panel Data *LI Quan-xi, JIN Feng-hua, SUN Pan-shi*(75)
- Research on Regional Differences of Consumption Cultural Concepts
—Empirical Analysis Based on Guangdong and Gansu *DONG Ya-li, GE Qing, MU Rui-fang*(80)
- Effect of Environmental Regulation on Economic Openness
—Empirical Analysis Based on the Data in Jiangsu *ZHUANG Ying-ying, LONG Ru-yin*(85)

Agricultural Economy

- Analysis of the Increased Revenues' Effect of Farmers' Cooperative Economic Organizations
—A New Principal-Agent Model *PU Xu-jin, WU Lin-hai*(89)
- An Empirical Research on the Experience Heterogeneity and Team Entrepreneurship of Returning Migrant Workers
..... *GUO Qun-cheng, ZHENG Shao-feng*(93)
- Research on the Factors Influencing Migrant Workers' Access to Employment Information
—Based on Theoretical and Empirical Analysis of 243 Migrant Workers *WANG Jian-hua, LI Lu-tang*(98)

Enterprise Management

- Research on the Choice of Technological Innovation Strategy for Corporations in Oligarch Monopoly Markets
..... *YANG Jian-jun, ZHANG Zhao*(103)
- Revision and Examination of Reliability and Validity of Corporate Social Responsibility Scale in China
..... *HE Xian-fu, PU Yun, ZHU Yu-xia, TANG Chun-yong*(106)
- Evolution Mechanism of SMEs' Element-oriented Innovation Pattern
—Case Study of Fujian Haiyuan Automatic Equipments CO., LTD *WU Jia-yin, ZHU bin*(111)
- Research on Impact of Implicit Tax of Listed Company on Stock Yield
—Based on VAR Model Analysis of Implicit Tax Rate and Stock Yield *YUAN Hong-wei*(117)

Theory Exploration

- Evaluation of Research on Supply Chain Quality Control and Coordination *LIU Qiang, SU Qin*(123)
- Measurement and Optimization of Credit Risk of the Portfolio
—Based on Copula Theory *WU Heng-yu, LI Bing, YAN Wu*(128)
- An Empirical Analysis of C2C Satisfaction from the Perspective of Shopping Value *LI Hai-ying*(134)
- Research on the Effects of Female College Students' Emotional Intelligence Level *MA Lin-hui*(140)
- Discussion on Strengthening Team's Execution *DENG Dong-mei*(143)