

## 媒体数字化设计

### MEDIA DIGITAL DESIGN

智能化居家养老背  
景下的老年人居住  
空间设计

RESIDENTIAL  
SPACE DESIGN  
FOR THE ELDERLY  
UNDER THE  
BACKGROUND OF  
INTELLIGENT HOME  
CARE

基于移动端的  
中国人色调偏好研究

THE RESEARCH  
ON COLOUR  
TONE  
PREFERENCE OF  
CHINESE BASED  
ON MOBILE  
TERMINAL

基于三维虚拟试衣  
技术的汉服设计与  
展示

DESIGN AND  
DISPLAY OF  
HANFU BASED  
ON 3D VIRTUAL  
TECHNOLOGY

基于 VOSVIEWER  
的民国商业美术研究进展分析

AN OVERVIEW OF THE  
LITERATURE ON COMMERCIAL  
ARTS IN THE PERIOD OF  
REPUBLIC OF CHINA BASED ON  
VOSVIEWER

数字时代汉字字体设计视  
觉表现形式演进研究

RESEARCH ON THE EVOLUTION OF VISUAL EXPRESSION FORM  
OF CHINESE CHARACTER FONT DESIGN IN DIGITAL AGE

# CONTENTS

Oct.2022

## 1 FRONT

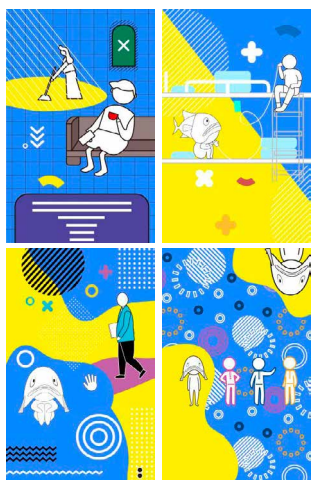
002 《讲文明促和谐》

彭 虹 尹长根

### 关注思考

- 008 佛山木版年画文创产品情感化设计策略探究  
011 明代缠枝纹在现代服装设计中的创新应用——以“缠枝四季花纹”为例  
016 基于KANO模型的蒙古文字文创产品设计研究  
020 基于包容性理念的移动应用产品开发设计研究  
024 产品美学因素对消费者心理感知影响探究——以星巴克文创产品为例  
028 圆明园文创基因图谱研究：清代宫廷绘画的当代转译  
032 基于FBM模型的结直肠癌筛查服务设计研究  
036 智能互联时代下基于案例的浙江城市社区便民服务体验设计研究  
040 游戏化思维介入“博物馆+”设计的研究

蒋 琳 周芷莹  
李红颖 王群山\*  
侍秉颂 吴海茹  
杨皓严 马广韬  
杨 梅 舒天骆 钟吴诚  
张 野 曾 馨  
黄敬听 肖东娟  
杨 煥 陈星海  
王子祎 朱旭光\*



H5界面设计  
设计：凌大峻

### 专题稿件

- 043 媒体数字化设计  
044 数字时代汉字字体设计视觉表现形式演进研究  
047 基于新媒体发展的视觉传达设计教学体系创新研究  
050 基于三维虚拟试衣技术的汉服设计与展示  
054 视听融合下的手机数字展厅导视设计——以浙江省博物馆数字展厅为例  
058 基于新媒体技术的宁强羌绣数字化交互设计  
062 “数字文旅+”视域下旅游码头空间设计研究

施 雯  
周孟熙 王 瑞 凌大峻  
杨路漫 沈海娜\* 董心如  
王伊莎 杨明刚  
石娟娟 聂 茜  
谢 华 黄浩峰

# 2

## MIDDLE



三个和尚-旭日东升壁灯  
设计：付志博/吴晓丽/李天伟，指导：杨沙



知音号码头主题灯光秀

## 理论研究

- 066 智能化居家养老背景下的老年人居住空间设计
- 070 设计创新的自然解决方案：将地方性知识融入可持续设计策略
- 074 基于VOSviewer的民国商业美术研究进展分析

孙 光 王璞莹 邬 旭  
宋立巍 刘月林  
江雨豪 何人可\*

## 设计教育

- 077 基于融思维探索PHOTOSHOP课程教学实践
- 080 中式家具设计“三观四块”进阶式课程教学改革实践探索
- 085 “以展促学”教学模式探索
- 089 从“古意”到“会意”——传统文化故事木趣产品设计课程创新性教学实践
- 094 课程思政视域下《文创产品设计》课程教学实践探索
- 097 从知识逻辑到产出导向：环境设计专业课程体系的进化
- 101 迪克-凯瑞模型在艺术设计课程中的应用研究——以《专业表达与沟通》为例

胡臻靖  
陈 亮 陈振益 万映频  
徐 浩  
杨 沙 孙 岚  
尹项迎 常 瑜 刘宝顺  
左 冕 徐向红  
杜 娟 谢天晓 吴青蔓

## 学研探索

- 105 基于AHP和感性工学的通风设备造型设计评价
- 109 基于未重合概念模型的参与式设计研究
- 113 侗族元素在地域品牌包装设计中的应用——以贵州茅台酒为例
- 116 基于可供性的机上餐车造型研究评述
- 119 基于人机工程学的老年智能轮椅设计研究
- 122 基于用户需求的可爬楼行李箱创新设计
- 126 游戏化腿部复健设备的设计研究
- 129 基于老年人出行特征的助行产品设计策略
- 132 面向听力语言障碍人群的智慧教育产品通用性设计研究
- 137 大飞机客舱内饰优化设计尺寸数据研究
- 142 基于WSR系统方法的未豆冲牙器产品包装设计研究
- 145 基于AIDA模型的乡村旅游App设计研究
- 149 基于移动端的中国人色调偏好研究
- 153 抱团模式下乡村养老空间优化设计研究
- 157 乘客行为导向的武汉市公交车站设计策略优化

张 宁 马 或  
林 潮 张祖耀 周龙飞  
李润莹 胡 或 刘运杰等  
丁 栋 徐江华\* 王 珍  
刘慧莹  
曹诗瑶 赵林红\* 周城航  
李雨盈 孔 斐  
潘梦婷 黄黎清  
黄楚峰  
刘家冀 蔡寒松 黄念一\*  
董美玲 陈烈胜 胡旭端  
张 弛  
祝诗扬 宋立民 宋文雯  
翁雯霞 李媛媛 袁心平  
胡以萍 杨嘉仪

- 161 《海神》

杨 智

002	BE CIVILIZED AND PROMOTE HARMONY	PENG HONG YIN CHANGGEN
-----	----------------------------------	------------------------

## ISSUES

008	RESEARCH ON THE EMOTIONAL DESIGN STRATEGY OF FOSHAN NEW YEAR WOODBLOCK PRINTS CULTURAL CREATION PRODUCT	JIANG LIN ZHOU ZHIYING
011	INNOVATIVE APPLICATION OF TWINING PATTERN OF THE MING DYNASTY IN DESIGN OF MODERN FASHION DESIGN—TAKE "FOUR SEASONS PATTERN WITH TWINING PATTERN" AS AN EXAMPLE	LI HONGXIE WANG QUNSHAN *
016	RESEARCH ON MONGOLIAN CULTURAL PRODUCT DESIGN BASED ON MODEL	SHI BINGSONG WU HAIRU
020	RESEARCH ON MOBILE APPLICATION PRODUCTS DEVELOPMENT AND DESIGN BASED ON INCLUSIVE CONCEPT	YANG HAOYAN MA GUANGTAO
024	RESEARCH ON THE INFLUENCE OF PRODUCT AESTHETIC FACTORS ON CONSUMERS' PSYCHOLOGICAL PERCEPTION—TAKING STARBUCKS PRODUCTS AS EXAMPLES	YANG MEI SHU TIANLUO ZHONG WUCHENG
028	CULTURAL CREATIVITY GENE MAP RESEARCH OF OLD SUMMER PALACE: CONTEMPORARY TRANSLATION OF THE PALACE PAINTINGS IN QING DYNASTY	ZHANG YE ZENG XIN
032	DESIGN OF COLORECTAL CANCER SCREENING SERVICE BASED ON THE FOGG' S BEHAVIOR MODEL	HUANG JINGTING XIAO DONGJUAN
036	RESEARCH ON THE DESIGN OF CONVENIENT SERVICE EXPERIENCE OF ZHEJIANG URBAN COMMUNITY BASED ON CASE IN THE ERA OF INTELLIGENT INTERCONNECTION	YANG HUAN CHEN XINGHAI
040	THE RESEARCH ON THE INVOLVEMENT OF GAME THINKING IN "MUSEUM+" DESIGN	WANG ZIYI ZHU XUGUANG*

## COLUMN

043	MEDIA DIGITAL DESIGN	
044	RESEARCH ON THE EVOLUTION OF VISUAL EXPRESSION FORM OF CHINESE CHARACTER FONT DESIGN IN DIGITAL AGE	SHI WEN
047	RESEARCH ON THE INNOVATION OF VISUAL COMMUNICATION DESIGN TEACHING SYSTEM BASED ON THE DEVELOPMENT OF NEW MEDIA	ZHOU MENGXI WANG RUI LING DAJUN
050	DESIGN AND DISPLAY OF HANFU BASED ON 3D VIRTUAL TECHNOLOGY	YANG LUMAN SHEN HAINA * DONG XINRU
054	RESEARCH ON THE COLOR DESIGN OF COMMERCIAL DISPLAY SPACE UNDER BRAND DESIGN—TAKE APPLE AND HUAWEI SHANGHAI FLAGSHIP STORES AS EXAMPLES	WANG YISHA YANG MINGGANG
058	DIGITAL INTERACTIVE DESIGN OF NINGQIANG QIANG EMBROIDERY BASED ON NEW MEDIA TECHNOLOGY	SHI JUANJUAN NIE QIAN
062	RESEARCH ON THE SPATIAL DESIGN OF TOURIST WHARF FROM THE PERSPECTIVE OF "DIGITAL CULTURAL TOURISM +"	XIE HUA HUANG HAOFENG

## THEORY

- |     |  |                             |
|-----|--|-----------------------------|
| 066 | RESIDENTIAL SPACE DESIGN FOR THE ELDERLY UNDER THE BACKGROUND OF INTELLIGENT HOME CARE   | SUN GUANG WANG PUYING WU XU |
| 070 | NATURE-BASED SOLUTIONS TO DESIGN-DRIVEN INNOVATION: INTEGRATING LOCAL KNOWLEDGE INTO THE STRATEGIES OF DESIGN FOR SUSTAINABILITY | SONG LIWEI LIU YUELIN       |
| 074 | AN OVERVIEW OF THE LITERATURE ON COMMERCIAL ARTS IN THE PERIOD OF REPUBLIC OF CHINA BASED ON VOSVIEWER                           | JIANG YUHAO HE RENKE *      |

## DESIGN EDUCATION

- |     |  |                                    |
|-----|--|------------------------------------|
| 077 | TEACHING PRACTICE OF PHOTOSHOP COURSE BASED ON "INTEGRATION" THINKING  | HU ZHENJING                        |
| 080 | EXPLORING THE TEACHING REFORM OF THE "THREE VIEWS AND FOUR BLOCKS" PROGRESSIVE COURSE ON CHINESE FURNITURE DESIGN                              | CHEN LIANG CHEN ZHENYI WAN YINGPIN |
| 085 | EXPLORATION ON THE TEACHING MODE OF "PROMOTING LEARNING BY EXHIBITION"   | XU HAO                             |
| 089 | FROM "ANCIENT CONNOTATION" TO "CONCEPTION PARAPHRASE"—CREATIVE TEACHING PRACTICE OF THE TRADITIONAL-CULTURE-STORY WOODEN PRODUCT DESIGN COURSE | YANG SHA SUN LAN                   |
| 094 | EXPLORATION ON THE TEACHING PRACTICE OF "CULTURAL AND CREATIVE PRODUCT DESIGN" FROM THE PERSPECTIVE OF CURRICULUM IDEOLOGY AND POLITICS        | YIN XIANGYING CHANG YU LIU BAOSHUN |
| 097 | FROM THE KNOWLEDGE LOGIC STRUCTURE TO THE OUTCOME-BASED EDUCATION: THE EVOLUTION OF THE CURRICULUM FOR ENVIRONMENTAL DESIGN                    | ZUO MIAN XU XIANGHONG              |
| 101 | APPLICATION STUDY OF DICK&CAREY MODEL IN AN ART DESIGN COURSE—TAKE PROFESSIONAL COMMUNICATION AND EXPRESSION AS AN EXAMPLE                     | DU JUAN XIE TIANXIAO WU QINGWAN    |

## EXPLORE & RESEARCH

- |     |   |  |
|-----|---|--|
| 105 | EVALUATION OF VENTILATION EQUIPMENT MODELING DESIGN BASED ON AHP AND KANSEI ENGINEERING                           | ZHANG NING MA YU                         |
| 109 | RESEARCH ON PARTICIPATORY DESIGN BASED ON NON-COINCIDENT CONCEPTUAL MODEL   | LIN CHAO ZHANG ZUYAO ZHOU LONGFEI        |
| 113 | APPLICATION OF DONG MINORITY ELEMENTS IN REGIONAL BRAND PACKAGING DESIGN—TAKING KWEICHOW MAOTAI AS AN EXAMPLE     | LI RUNYING HU YU LIU YUN JIE ETC.        |
| 116 | COMMENTS ON THE SCULPT OF AIRCRAFT TROLLEY BASED ON AFFORDANCE  | DING DONG XU JIANGHUA * WANG ZHEN        |
| 119 | RESEARCH ON THE DESIGN OF INTELLIGENT WHEELCHAIR FOR THE ELDERLY BASED ON ERGONOMICS                              | LIU HUIYING                              |
| 122 | INNOVATIVE DESIGN OF CLIMBING SUITCASE BASED ON USER NEEDS  | CAO SHIYAO ZHAO LINHONG * ZHOU CHENGHANG |
| 126 | DESIGN AND RESEARCH OF GAME-BASED LEG REHABILITATION EQUIPMENT  | LI YUYING KONG FEI                       |
| 129 | INFLUENCE OF TRAVEL CHARACTERISTICS OF THE ELDERLY ON THE DESIGN OF MOBILITY ASSISTANCE PRODUCTS                  | PAN MENGTING HUANG LIQING                |
| 132 | RESEARCH ON THE UNIVERSAL DESIGN OF INTELLIGENT EDUCATION PRODUCTS FOR PEOPLE WITH HEARING AND LANGUAGE DISORDERS | HUANG CHUFENG                            |
| 137 | STUDY ON OPTIMIZED DESIGN OF CABIN INTERIOR   | LIU JIAJI CAI HANSONG HUANG NIANYI *     |
| 142 | RESEARCH ON PRODUCT PACKAGING DESIGN OF VTOOTH TEETH FLUSHER BASED ON WSR SYSTEM METHOD                           | DONG MEILING CHEN LIESHENG HU XUDUAN     |
| 145 | RESEARCH ON INTERACTION DESIGN OF RURAL TOURISM APP BASED ON AIDA MODEL   | ZHANG CHI                                |
| 149 | THE RESEARCH ON COLOUR TONE PREFERENCE OF CHINESE BASED ON MOBILE TERMINAL  | ZHU SHIYANG SONG LIMIN SONG WENWEN       |
| 153 | STUDY ON THE OPTIMAL DESIGN OF RURAL ENDOWMENT SPACE UNDER THE GROUP MODE   | WENG WENXIA LI YUANYUAN YUAN XINPING     |
| 157 | PASSENGER BEHAVIOR-ORIENTED DESIGN STRATEGY OPTIMIZATION OF WUHAN BUS STATION                                     | HU YIPING YANG JIAYI                     |