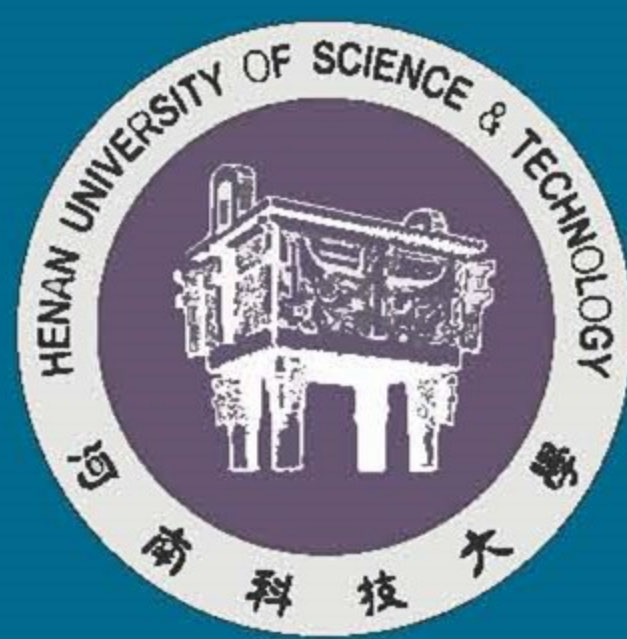
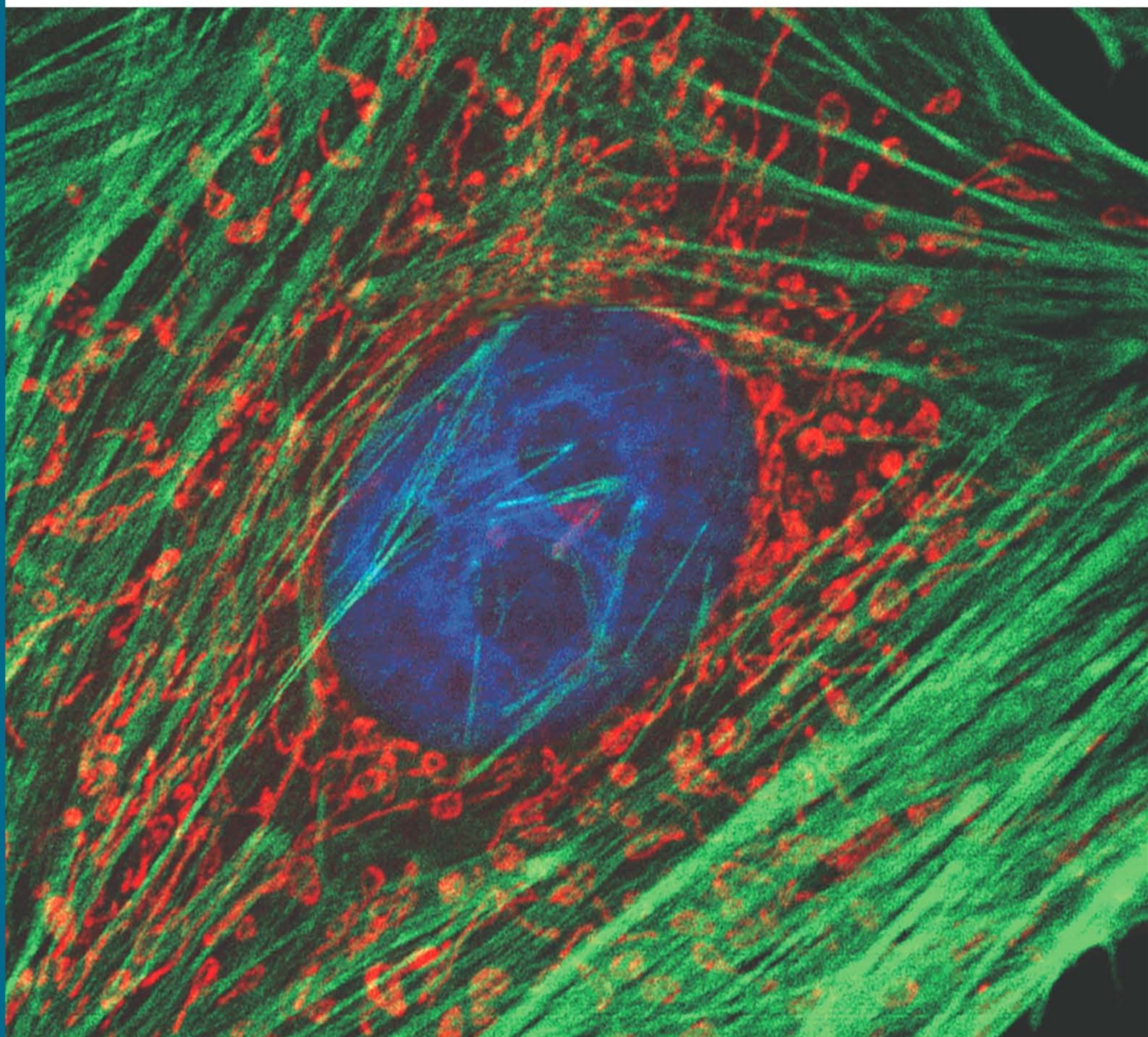


ISSN 2096-7381
CN 41-1455/R



食管疾病

Journal of Esophageal Diseases



ISSN 2096-7381



2

2022年6月

第4卷 第2期 总第11期
Vol.4 No.2 Jun.2022

食管疾病

第四卷 第二期

二〇二二年六月

目 次

- 食管癌仿生类器官模型的构建研究 石林林 郝思好 李佳怡 喻 莹 史嘉铭 高社干 (81)
- 炎症和肿瘤微环境与食管癌防治研究进展 张哲源
- 刘怡文 付 臻 代宁涛 杨海军 李军扩 孙 蔚 郭艺博 梁梦夏 张 宁 孔金玉 周福有 (85)
- p53 与食管癌研究进展 韩丹阳 李 静 胡红霞 常永超 王新帅 (91)
- 亚剂量七氟醚复合麻醉对人工气胸食管癌根治术患者的肺保护作用 韩杰然 王 玲 (95)
- 强力电凝与柔和电凝用于食管 ESD 创面止血后并发症比较 许鸣超 姜玉洋 崔 征 杨爱峰 (99)
- 食管手术术中留置营养管的方法研究 陈小放 卢建国 赵宝生 (102)
- 食管鳞癌术后患者预后相关因素研究
- 岳盼盼 王道存 李慧芝 贾慧雨 安志强 黄圣迪 曹利艳 (105)
- 食管癌术后胸内吻合口瘘的诊治进展 钟东晨 陈树斌 陈少斌 (111)
- 自动化计划设计在胸中上段食管癌调强放疗中的应用研究 彭圣贤 刘 悦 庞 亚 (117)
- 多排螺旋 CT 在评价食管癌术后复发/转移中的价值 陈 望 丁小波 刘 冰 (120)
- 影像学在食管癌诊断与治疗中的应用 武聪聪 陈殿森 强 军 王慧莹 (124)
- 食管癌的磁共振影像研究进展 王慧莹 强 军 陈殿森 武聪聪 (128)

胃食管连接部收缩指数对区分功能性烧心与难治性胃食管反流病的作用	李 福 郑冬菊	(133)
奥美拉唑碳酸氢钠胶囊治疗胸下段食管癌术后反流性食管炎的疗效分析	杨晓利 夏 金	(137)
四位一体居家护理对反流性食管炎患者症状积分及生活质量的影响	董宣宣	(140)
长程心理干预对食管癌患者预后的影响研究	潘振山 杜景霞	(144)
重复经颅磁刺激对食管癌伴发抑郁患者大脑组织微结构、血清瘦素水平及抑郁情绪的影响	樊雪峰 贾学军 闫相涛	(148)
e化行动护理对食管癌手术患者术后自护能力、心理应激的影响	李晶晶 张 洁 冯 丹	(152)
食管癌手术患者实施治疗性沟通结合细节优化护理的效果	魏 蕾	(157)

期刊基本参数：CN 41-1455/R * 2019 * q * A4 * 80 * zh * P * ¥10.00 * 1400 * 19 * 2022-6-25

CONTENTS

The Construction of an Organoid Models of Esophageal Cancer

..... *SHI Lin-lin, HAO Si-yu, LI Jia-yi, et al* (81)

Inflammation, Tumor Microenvironment in Prevention and Treatment of Esophageal Cancer

..... *ZHANG Zhe-yuan, LIU Yi-wen, FU Zhen, et al* (85)

Research Progresses of p53 in Esophageal Cancer

..... *HAN Dan-yang, LI Jing, HU Hong-xia, et al* (91)

Pulmonary Protective Effect of Subdose Sevoflurane Combined Anesthesia on Patients Undergoing Radical

Resection of Esophageal Cancer with Artificial Pneumothorax *HAN Jie-ran, WANG Ling* (95)

Comparison of the FORCED COAG and SOFT COAG in the Wound Treatment of Esophageal ESD

..... *XU Ming-chao, JIANG Yu-yang, CUI Zheng, et al* (99)

Study on the Method of Indwelling Nutrient Tube in Esophagus Operation

..... *CHEN Xiao-fang, LU Jian-guo, ZHAO Bao-sheng* (102)

Prognostic Factors of Postoperative Patients with Esophageal Squamous Cell Cancer

..... *YUE Pan-pan, WANG Dao-cun, LI Hui-zhi, et al* (105)

Progress in Diagnosis and Treatment of Intrathoracic Anastomotic Leakage after Esophagectomy

..... *ZHONG Dong-chen, CHEN Shu-bin, CHEN Shao-bin* (111)

Research on the Application of Automated Plan of Intensity Modulated Radiation Therapy for Middle

and Upper Esophageal Cancer *PENG Sheng-xian, LIU Yue, PANG Ya* (117)

The Value of Multi-slice Spiral CT in Evaluating Postoperative Recurrence/metastasis of Esophageal Cancer

..... *CHEN Wang, DING Xiao-Bo, LIU Bing* (120)

Application of Imaging in Diagnosis and Treatment of Esophageal Cancer

..... *WU Cong-cong, CHEN Dian-sen, QIANG Jun, et al* (124)

Advances in Magnetic Resonance Imaging Studies of Esophageal Cancer

..... *WANG Hui-ying, QIANG Jun, CHEN Dian-sen, et al* (128)

Role of Gastroesophageal Junction Contraction Index in Distinguishing Functional Heartburn from

Refractory Gastroesophageal Reflux Disease *LI Fu, ZHENG Dong-ju* (133)

Effect of Omeprazole Sodium Bicarbonate Capsule on Reflux Esophagitis after Operation of Lower

Thoracic Esophageal Cancer *YANG Xiao-li, XIA Jin* (137)

Effect of Four-in-one Home Nursing on Symptom Score and Life Quality of Patients with Reflux

Esophagitis *DONG Xuan-xuan* (140)

Effect of Long-term Psychological Intervention on the Prognosis of Patients with Esophageal Cancer

..... *PAN Zhen-shan, DU Jing-xia* (144)

Effect of Repetitive Transcranial Magnetic Stimulation on Microstructure of Brain Tissue, Serum Leptin

Levels and Depressed Mood in Patients of Esophageal Cancer with Depression

..... *FAN Xue-feng, JIA Xue-jun, YAN Xiang-tao* (148)

Influence of E-action Nursing on Postoperative Self-care Ability and Psychological Stress of Patients with

Esophageal Cancer *LI Jing-jing, ZHANG Jie, FENG Dan* (152)

Therapeutic Communication Combined with Detail Optimization of Nursing Care for Patients Undergoing

Esophageal Cancer Surgery *WEI Lei* (157)