

ISSN 1672-7061

CN 31-1927/R

Journal of Neurology and Neurorehabilitation

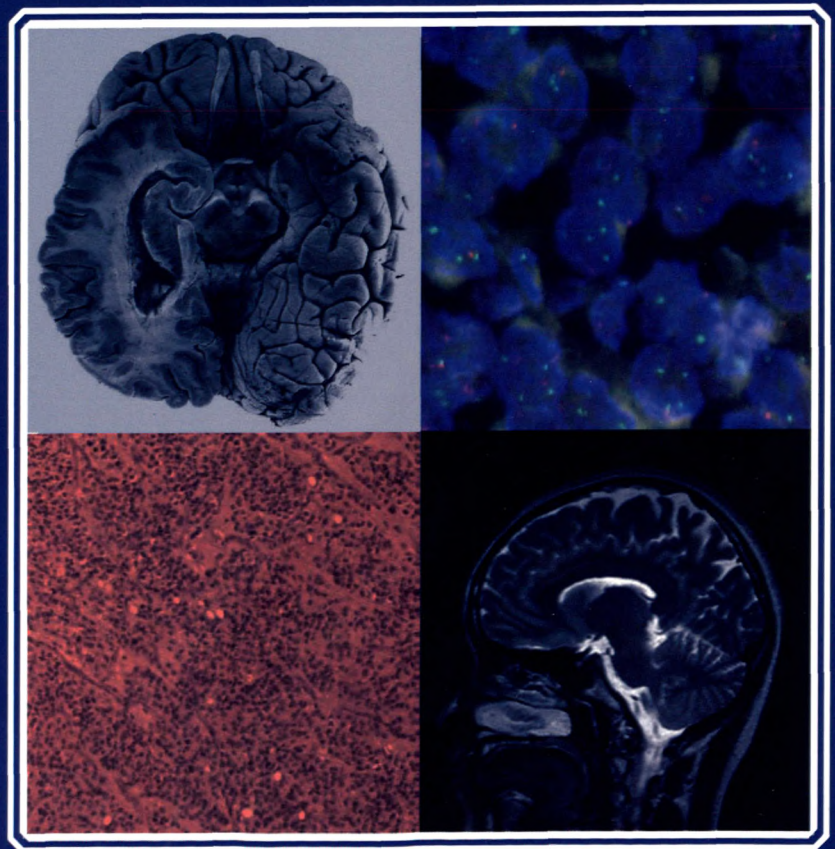
神经病学与神经康复学杂志

SHENJINGBINGXUE YU SHENJINGKANGFUXUE ZAZHI

中国核心期刊（遴选）数据库期刊

2011年12月
第8卷 第4期

Vol. 8, No. 4
Dec. 2011



主 办

上海市中西医结合学会

上海交通大学医学院附属仁济医院

神经病学与神经康复学杂志

SHENJINGBINGXUE YU SHENJINGKANGFUXUE ZAZHI

季刊 2004年3月创刊 第8卷 第4期(总第32期) 2011年12月25日出版

[期刊基本参数]CN 31-1927/R * 2004 * q * A4 * 48 * zh * P * ¥8.00 * 3000 * 11 * 2011 - 12

主管

上海市卫生局

主办

上海市中西医结合学会

上海交通大学医学院附属仁济医院

出版

《神经病学与神经康复学杂志》编辑部

主 编 钱可久 李焰生

编辑部主任 吴波水

印刷 上海竟成印务有限公司

订阅和邮购

《神经病学与神经康复学杂志》编辑部

地址:(200001)上海市山东中路145号

上海交通大学医学院附属仁济医院

(西部)

电话:(021)58752345-2312

传真:(021)63730455

E-mail:sjbxysjkfz@ yahoo. com. cn

NJNR2004@ gmail. com

定价 每期人民币8元 全年人民币32元

邮件准许号 2006-B-333-004

中国标准连续出版物号

ISSN 1672-7061

CN 31-1927/R

广告经营许可证号

3100120090009

版权所有

《神经病学与神经康复学杂志》编辑部

目 次

临床研究

- 针药结合认知训练干预脑卒中后轻度认知障碍疗效观察
..... 周翠侠,崔 晓,倪欢欢,等(161)
- 标准化位点注射 A 型肉毒毒素治疗颜面部痉挛的临床分析
..... 潘有贵,靳令经,刘务朝,等(165)
- 急性病毒性脑炎合并痫性发作的临床研究
..... 顾 勤,詹 青,王勤鹰,等(168)
- 儿童孤独症综合治疗临床研究
..... 曾海辉,韦晓燕,蒙柄宇,等(171)

短 篇

- 脊髓亚急性联合变性 30 例临床分析 耿文娟(174)
- 动态脑电图在司法精神医学临床中的初步应用
..... 孙 丽,李素芳,宗文斌(176)

综 述

- 影响颈动脉斑块稳定性的相关因素
..... 余寿芬,李焰生(178)

标准与指南

- 住院患者的静脉血栓栓塞预防:美国内科医师学会的临床实践
指南
..... 俞 玲,邹 静,李焰生(183)

欧洲神经病学协会联盟的成人癫痫持续状态管理指南	高枚春, 时丽丽, 李伟华, 等(190)
伴癌综合症的肿瘤筛查: 欧洲神经病协会联盟工作组报告
.....	潘元美, 朱 莹, 周洁茹, 等(194)
EFNS 原发性肌张力障碍诊断和治疗指南
.....	董 青, 王智樱, 杜芸兰, 等(200)
第二届《神经病学与神经康复学杂志》编委会名单	(封2)
《神经病学与神经康复学杂志》稿约	(封3)

本期责任编辑: 李焰生

注: 除非特别声明, 本刊刊出的所有文章不代表上海市中西医结合学会、上海交通大学医学院附属仁济医院和编委会的观点, 对采纳本刊提供的任何资料和建议所导致的损害, 本刊不承担任何责任。本刊如有印装质量问题, 请向编辑部调换。

JOURNAL OF NEUROLOGY AND NEUROREHABILITATION

Quarterly Vol. 8 No. 4 December 2011

Responsible Institute

Shanghai Municipal Health Bureau

Sponsors

Shanghai Association of the Integration of
Traditional Chinese and Western Medicine
Renji Hospital, School of Medicine, Shanghai
Jiaotong University

Publishing

Editorial Board of *Journal of Neurology and
Neurorehabilitation*

Editor-in-Chief

Qian Kejiu, Li Yansheng

Director of the Editorial Department

Wu Boshui

Printing

Shanghai Jingcheng Printing House

Subscription

Editorial Board of *Journal of Neurology and
Neurorehabilitation*

Renji Hospital affiliated to Medical College,
Shanghai Jiaotong University

145, Shandong Road(C), Shanghai 200001

Tel: (021)58752345 - 2312

Fax: (021)63730455

E-mail: sjbxysjkfxxz@yahoo.com.cn

NJNR2004@gmail.com

CSSN

ISSN 1672 - 7061

CN 31 - 1927/R

Advertising License

3100120090009

The copyright is held by the Editorial Board of
Journal of Neurology and Neurorehabilitation

CONTENTS

Clinical research

- Effect of combination of acupuncture, herbal medicine and cognitive training on patients with mild cognitive impairment after stroke
..... *Zhou Cuixia, Cui Xiao, Ni Huanhuan, et al*(161)
- Clinical analysis of the treatment of facial spasm by standardized bit point injection of Botulinum toxin A
..... *Pan Yougui, Jin Lingjing, Liu Wuchao, et al*(165)
- Clinical research of acute viral encephalitis accompanied with seizure
..... *Gu Qin, Zhan Qin, Wang Qinying, et al*(168)
- Study of comprehensive treatment on children with autism
..... *Zeng Haihui, Wei Xiaoyan, Meng Bingyu, et al*(171)

Brief report

- Analysis of 30 cases of spinal subacute combined degeneration
..... *Geng Wenjuan*(174)
- The initial application of ambulatory EEG in the clinical of forensic psychiatric
..... *Sun Li, Li Sufang, Zong Wenbin*(176)

Review

- Relevant impact factors on the stability of carotid plaques
..... *Yu Shoufen, Li Yansheng*(178)

Standard and guide

- Venous thromboembolism prophylaxis in hospitalized patients: a clinical practice guideline from the American college of physicians
..... *Yu Ling, Zou Jing, Li Yansheng*(183)
- EFNS guideline on the management of status epilepticus in adults
..... *Gao Meichun, Shi Lili, Ji Weihua, et al*(190)

Screening for tumours in paraneoplastic syndromes; report of an EFNS Task Force
..... *Pan Yuanmei, Zhu Ying, Zhou Jieru, et al*(194)
EFNS guidelines on diagnosis and treatment of primary dystonias
..... *Dong Qin, Wang Zhiying, Du Yunlan, et al*(200)

Executive Editor: Li Yansheng

Notes: All articles published represent the opinions of the authors, don't reflect the official policy of Shanghai Association of the Integration of Traditional Chinese and Western Medicine, Renji Hospital School of Medicine, Shanghai Jiaotong University, or the Editorial Board unless this is clearly specified. If accepting data and suggestions furnished by the Journal causes any damage, we won't bear responsibility for the consequences arising therefrom.