

中国科学引文数据库来源期刊 中国科技核心期刊

Vol.29 No.1 Feb. 2020

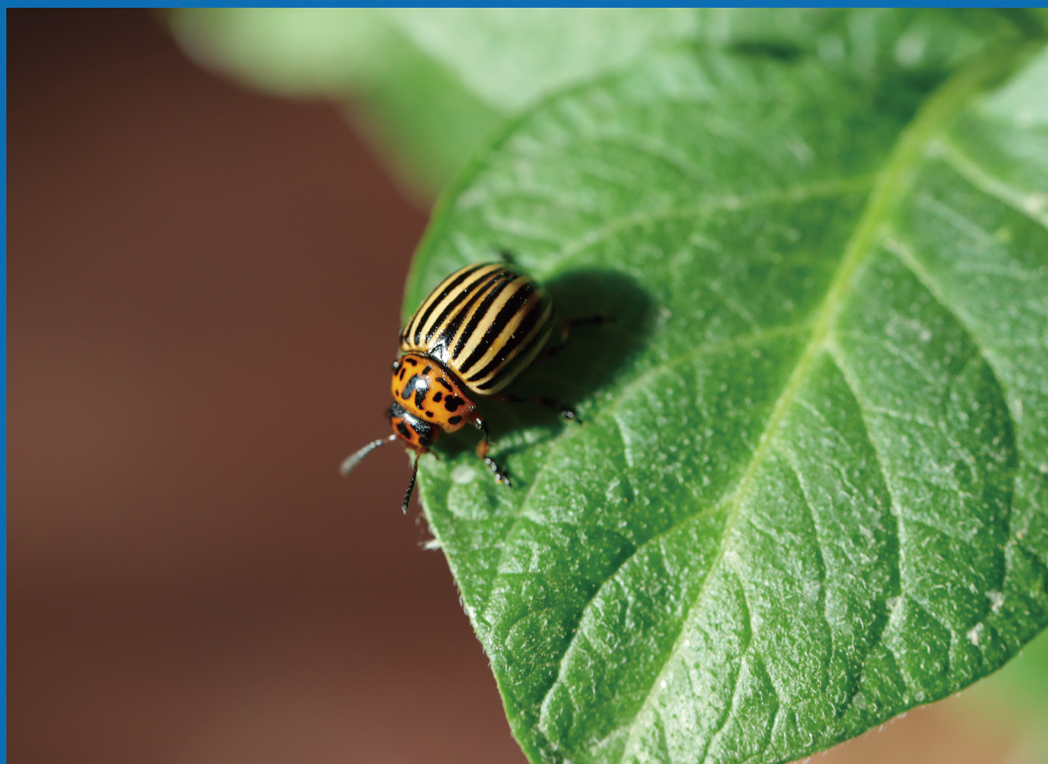
第29卷 第1期 2020年2月

ISSN 2095-1787

CN 35-1307/Q

生物安全学报

JOURNAL OF BIOSAFETY



ISSN 2095-1787



万方数据



主 办
Sponsored by

中国植物保护学会
China Society of Plant Protection
福建省昆虫学会
Entomological Society of Fujian

JBCS

www.jbscn.org
中国·福州
Fuzhou, China

目 次

◎ 综述论文

- 1 农药对捕食性天敌的影响研究进展 杨慧, 蒋皓天, 何恒果
8 检疫性有害生物李痘病毒生物学特性及预防控制技术 王浩, 万方浩, 于翠, 武强, 张桂芬

◎ 研究论文

- 16 利用 mtCOI PCR-RFLP 技术鉴别草地贪夜蛾与其他 3 种形态相近昆虫
..... 孔子艺, 王鹏, 朱军生, 国栋, 迟秀丽, 孔宝玉, 胡磊, 褚栋
23 马铃薯甲虫结节性硬化复合物基因 *LdTSC1* 和 *LdTSC2* 基因的克隆及功能分析
..... 廖兰兰, 付开赞, 常瑞, 丁新华, 何江, 吐尔逊·阿合买提, 任羽, 郭文超
31 伴生细菌在入侵种桉树枝瘿姬小蜂克服桉树抗性中的作用 寇冀蒙, 刘芳华, 刘一澎, 马玲, 鲁敏
39 二疣犀甲对油棕、椰子的风险性分析及防控策略 吕朝军, 钟宝珠, 覃伟权, 阎伟
44 警惕一种潜在的入侵性有害生物多孔曼粉蚧 刘若思, 赵晓丽, 徐森锋
48 广西凭祥口岸首次截获有害生物台湾坡天牛 *Pterolophia formosana*
..... 马福欢, 钟勇, 白华菊, 陈展册, 李隼然
51 氮磷汇入驱动下的河流轮虫群落演替 陈星宇, 刘雨泽, 郭道宇, 熊薇
59 安徽省外来植物入侵状况分析 芮振宇, 钟耀华, 刘姚, 张震
69 *Bt* 抗虫棉秸秆还田对土壤养分特征的影响
..... 张富丽, 尹全, 王东, 杨晓凤, 刘文娟, 郭灵安, 雷绍荣, 宋君, 罗苹

◎ 简讯

- 78 List of reviewers, 2019

封面照片: 马铃薯甲虫。提供人: 阿尔孜姑丽·肉孜(新疆农业大学)。

Front cover photo: *Leptinotarsa decemlineata* Say. Provided by AERZIGULI·Rouzi (Xinjiang Agricultural University).

JOURNAL OF BIOSAFETY

CONTENTS

REVIEW ARTICLE

- 1 Progress on the effects of pesticides on the predatory natural enemies.....YANG Hui, JIANG Haotian, HE Hengguo
- 8 Biological characteristics and techniques for prevention and management of *Plum pox virus* (sharka), a quarantine pest of stone fruits WANG Hao, WAN Fanghao, YU Cui, WU Qiang, ZHANG Guifen

RESEARCH PAPERS

- 16 Rapid differentiation of *Spodoptera furgiperda* from the other three morphologically similar species using mt-COI PCR-RFLP technique KONG Ziyi, WANG Peng, ZHU Junsheng, GUO Dong, CHI Xiuli, KONG Baoyu, HU Lei, CHU Dong
- 23 Cloning and functional characterization of the tuberous sclerosis complex *TSC1* and *TSC2* genes in the Colorado potato beetle, *Leptinotarsa decemlineata* LIAO Lanlan, FU Kaiyun, CHANG Rui, DING Xinhua, HE Jiang, TURSUN · Ahmat, REN Yu, GUO Wenchao
- 31 The associated bacteria of *Leptocybe invasa* Fisher & La Salle (Hymenoptera: Eulophidae) facilitate their host to overcome eucalyptus chemical defense KOU Jimeng, LIU Fanghua, LIU Yipeng, MA Ling, LU Min
- 39 Risk analysis and control strategy of *Oryctes rhinoceros* on *Elaeis guineensis* and *Cocos nucifera* LÜ Chaojun, ZHONG Baozhu, QIN Weiquan, YAN Wei
- 44 Precautionary analysis of a potentially invasive pest *Maconellicoccus multipori* (Takahashi, 1951) LIU Ruosi, ZHAO Xiaoli, XU Miaofeng
- 48 A first interception of the cerambycid *Pterolophia formosana* at Guangxi Pingxiang port MA Fuhuan, ZHONG Yong, BAI Huaju, CHEN Zhance, LI Yangran
- 51 Nitrogen and phosphorus inputs affect rotifer communities in rivers CHEN Xingyu, LIU Yuze, GUO Xiaoyu, XIONG Wei
- 59 The analysis on the alien invasive plants in Anhui Province RUI Zhenyu, ZHONG Yaohua, LIU Yao, ZHANG Zhen
- 69 Effects of returning *Bt* cotton straw on soil nutrient characteristicsZHANG Fuli, YIN Quan, WANG Dong, YANG Xiaofeng, LIU Wenjuan, GUO Ling'an, LEI Shaorong, SONG Jun, LUO Ping

NEWSLETTER

- 78 List of reviewers, 2019