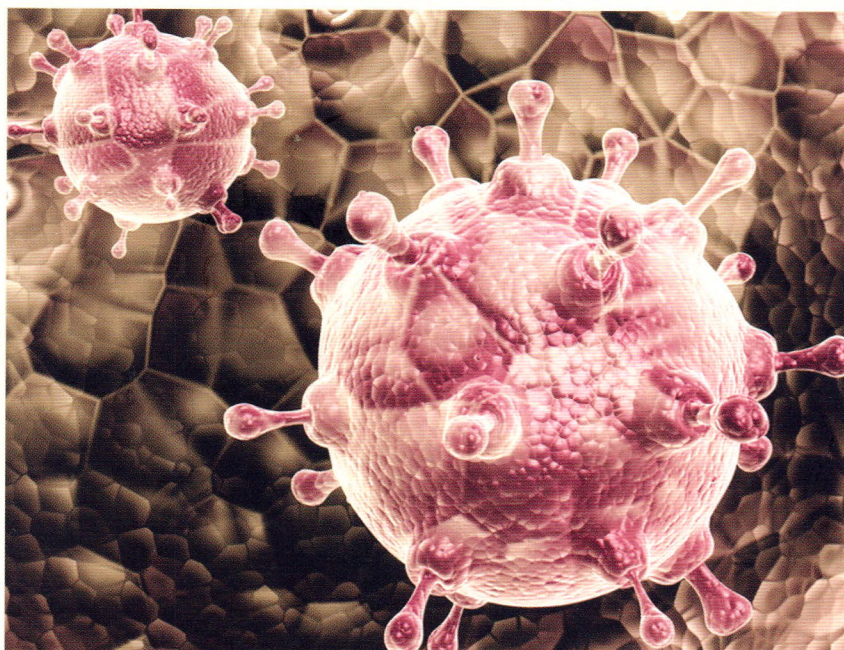




ISSN 1673-6273
CN 23-1544/R
CODEN SXJTA8

XIAN DAI SHENG WU YI XUE JIN ZHAN
现代生物医学进展
PROGRESS IN MODERN BIOMEDICINE



2017年第17卷 (第12期)

中国科技核心期刊
科技部中国科技论文统计源期刊
中国学术期刊网络出版总库 (CNKI) 收录期刊
美国化学文摘 (CA) 检索期刊
俄罗斯文摘杂志 (AJ) 收录期刊
美国剑桥文摘 (CSA) 收录期刊
英国Global Health数据库收录期刊
英国国际农业与生物科学研究中心 (CABI) 数据库收录期刊
Genamics Journal Seek收录期刊
美国ProQuest数据库收录期刊
美国EBSCO数据库收录期刊
波兰哥白尼索引 (IC) 收录期刊
WHO西太区医学索引 (WPRIM) 收录期刊

ISSN 1673-6273



现代生物医学进展

XIANDAI SHENGWUYIXUE JINZHAN

旬刊 2001年4月创刊 第17卷 第12期 2017年4月30日出版 Progress in Modern Biomedicine

主管:黑龙江省卫生厅
主办:黑龙江省森工总医院
哈尔滨医科大学附属第四医院
协办:哈尔滨工业大学
上海交通大学附属第一人民医院
编辑:现代生物医学进展编辑委员会
150040 哈尔滨市和兴路32号
电话:0451-82583800
E-mail:biomed_54@126.com
E-mail:liudhui_21@126.com
E-mail:biomagnetism@163.com
http://biomed.net.cn
http://biomed.cnjournals.com
http://www.shengwuyixue.com
http://swcx.periodicals.net.cn
学术顾问: 杨宝峰 刘颂豪
阮长耿 曾溢滔 贺林
傅世英 王迺谦 刘玉清
郝希山 曾益新 张岂凡
主编: 申宝忠
执行主编: 崔建华
执行副主编: 孟庆刚
副主编: 李钰 张贵祥
黄文华 黄菊芳 刘平
吕传柱 曾乐平 唐一源
曾凡一 刘明 代文杰
张清媛
编辑部主任: 刘同奎
编辑部副主任:
刘子馨 谢建平 郑林丰
编辑部地址:150001,哈尔滨市54号信箱
(哈尔滨市花园街184号403)
电话:0451-82583800 0451-53658268
传真:0451-82583966
出版:现代生物医学进展杂志社
广告经营许可证:2301004050020
印刷:哈尔滨市工大节能印刷厂
发行:国内:哈尔滨市报刊发行局
国外:中国国际图书贸易总公司
(北京399信箱,100044)
国外发行代号:Q1728
订购:全国各地邮局
邮发代号:14-12
邮购:现代生物医学进展编辑部
(150001 哈尔滨市54号信箱)
定价:30.00元/期,全年1080.00元
中国标准刊号:ISSN 1673-6273
CN 23-1544/R
2017年版权归现代生物医学进展杂志社所有
本刊刊出的所有文章不代表编委会的观点,
除非特别声明 本刊如有印刷质量问题,请向
现代生物医学进展杂志编辑部调换

目次

·论著·

·基础研究·

- Bub1 基因对人肝癌 MHCC97-H 细胞增殖、周期和凋亡的影响
..... 蒲猛 汪建林 黄启科等 (2201)
- 心肌梗死后心衰大鼠血液中同型半胱氨酸的变化及意义
..... 孟伟栋 徐斌 刘潇潇等 (2205)
- 孟鲁司特钠对柯萨奇 B3 病毒感染小鼠心肌的保护作用
..... 周洁 黄星原 魏丽等 (2209)
- 卡那霉素致聋豚鼠耳蜗电极植入模型的建立及意义
..... 韩鹏 张睿 高滢等 (2214)
- 白细胞介素 -17 对体外培养髓核细胞增殖和代谢的影响
..... 张洪跃 周潘宇 汪洋等 (2218)
- 小口径血液导流管的实验研究
..... 张建磊 陈永祥 臧成五等 (2223)
- 尿酸对类成骨细胞(MG-63)增殖的影响及其机制研究
..... 王淑芳 杨乃龙 孙玉英等 (2227)
- 高氧抑制 LPS/ATP 诱导的骨髓源性巨噬细胞的焦亡
..... 阴弯弯 李项瑞 闫晋琪等 (2232)
- MACC1 和 C-Met 在口腔白斑和口腔鳞状细胞癌中的表达及意义
..... 王彬 张兴伟 颜炳坤等 (2236)
- 胰腺癌潜在肿瘤标志物的探索及在胰腺癌中的应用
..... 乔勃伟 殷若哲 方诚等 (2241)

现代生物医学进展

XIANDAI SHENGWUYIXUE JINZHAN

旬刊 2001年4月创刊 第17卷 第12期 2017年4月30日出版 Progress in Modern Biomedicine

·临床研究·

- 无功能性垂体巨大腺瘤卒中的特点及预后分析 仇霖亭 胡宏康 朱俊乐等 (2247)
- 糖尿病合并侵袭性肺真菌感染的危险因素及预后分析 田德兴 唐 微 肖贞良等 (2252)
- 两种微创术式治疗老年混合痔的临床疗效比较 詹 敏 李 逵 严 建等 (2256)
- 连续性血液净化治疗联合乌司他丁对急性胰腺炎患者 TLR4、血浆炎症因子
及白介素的影响 李 科 刘明华 张 雷等 (2260)
- 胃癌患者围术期血清 TNF- α 、NO 及 IGF-II 水平变化及意义 周思欣 卢灿荣 彭 正等 (2264)
- 抑那通对子宫内膜异位症患者术后血清 HE4 及 ENA78 水平的影响 ... 李利玲 汪向红 刘妮英等 (2267)
- 血清 γ - 谷氨酰转肽酶水平与老年 2 型糖尿病患者并发急性冠脉综合征的相关性分析
..... 高秀荣 吉宗珊 于庆智等 (2271)
- 冠心病患者颈动脉粥样硬化超声相关参数与病变严重程度的关系 ... 郝美嘉 陈文卫 王 氛等 (2275)
- 肝细胞生长因子和基质金属蛋白酶 -9 在过敏性紫癜中表达的意义
..... 阿迪力江·喀日 阿曼姑·阿不都沙拉木 郭艳芳等 (2279)
- 稳心颗粒对急性心肌梗死患者心率变异性及血清炎症因子水平的影响
..... 王夏云 陈 氏 全守霞等 (2282)
- 乳腺良性肿块与乳腺癌患者的超声弹性成像对比 金秀红 赵奕文 王 岚等 (2286)
- 肝癌组织中 miR-338-3p 的表达及与临床病理参数的关系 窦春青 金 鑫 孙丽媛等 (2290)
- 改良颅窝减压术在 Chiari 畸形 I 型患者中的应用及其对脑脊液动力学的影响
..... 王江峰 刘金道 董 涛等 (2294)
- 川芎嗪注射液对冠心病心绞痛患者临床症状及血液流变学的影响 ... 杜 辉 张文文 牛君义等 (2298)
- 多巴胺联合酚妥拉明治疗小儿重症肺炎合并心衰疗效研究 黄妮娜 高晓鹏 章玉丹等 (2302)
- 思力华对慢性阻塞性肺疾病患者中性粒细胞、IL-8 及 TNF- α 水平的影响
..... 周 玗 傅美红 王嘉漫等 (2306)
- 中医针药联合治疗结肠癌患者术后胃肠功能障碍的疗效观察 李博萍 庞宏威 贺毅洁等 (2310)
- 碱性成纤维细胞生长因子对下颌阻生牙手术患者血清 IL-6 水平
及牙槽骨密度的影响 冯 颖 郭 莉 谢一敦等 (2314)
- 髌突 - 翼外肌解剖复位与游离复位治疗髌状突骨折的疗效比较 刘 杨 王 毅 胡 磊等 (2317)
- 乳腺癌手术前后凝血纤溶功能及血小板参数变化及意义 刘兰兰 马雪平 宋 娜等 (2321)
- 不同治疗方式对冠心病合并心脏瓣膜炎患者血清炎症反应的影响 ... 马 恩 王宗社 舒端朝等 (2325)
- 冠心病患者 PCI 术后对比剂肾病发生的预测因素的临床研究 余云华 何蓉蓉 于亚梅等 (2328)
- 痰热清注射液联合纳洛酮对老年慢性呼吸衰竭并发肺性脑病患者临床疗效的影响
..... 唐燕玉 刘 刚 龙翔宇等 (2332)
- 芪苈强心胶囊联合比索洛尔对老年心力衰竭患者的疗效 金 龙 程 康 吕雅丽等 (2335)

现代生物医学进展

XIANDAI SHENGWUYIXUE JINZHAN

旬刊 2001年4月创刊 第17卷 第12期 2017年4月30日出版 Progress in Modern Biomedicine

超声心动图评价妊娠期糖尿病孕妇胎儿心脏结构及功能中的临床研究	石伟 刘海霞 罗一等	(2338)
蒙脱石散联合止泻保童颗粒对腹泻患儿血清 CRP 水平及心肌酶谱的影响	雷娟娟 冯慧玲 郝静静等	(2342)
血清 AFP, CEA, CA125 单独或联合检测对原发性肝癌早期诊断的临床价值研究	王曦晖 蒋祖辉 周琼仙等	(2346)
小切口入路锁定钢板治疗老年肱骨近端骨折的临床疗效观察	李宏伟 单乐群 柴臻等	(2349)
桂枝茯苓丸联合妇乐片对子宫内膜异位症的临床疗效	杨蕾 黄志兰 敬源等	(2353)
心理治疗联合利培酮治疗精神分裂症的疗效及安全性	卢宝 梁月竹 王春钢等	(2357)
ANH 自体输血在完全性前置胎盘合并胎盘植入剖宫产术中的应用 ...	郭仙鹤 马丽 刘圆圆等	(2361)
·生物医学教学·		
荧光显微成像在医学细胞生物学实验教学中的应用探索	吴佼 李勇 南刚等	(2364)
军校学员心理测评课教学体会	惠铎铎 马进 张利利等	(2368)
·专论与综述·		
表观遗传学及其研究方法	朱锋 王旭 刘倩莹等	(2371)
外排转运蛋白介导的抗真菌药物耐药研究进展	王威 邵龙 郑娜等	(2377)
中西医治疗代谢综合征的认识发展过程	刘紫君 郭玮 韩宇博等	(2381)
血管迷走性晕厥的治疗进展	周一鸣 袁瑾辉 吕佳明等	(2386)
mTORC1 在慢性肾功能不全胰岛素抵抗中的作用	李娇 许卓 赵洋等	(2390)
MicroRNA-203 在结直肠癌研究中的进展	彭易 彭秀达 刘龙飞等	(2394)
HLA-G 在肿瘤组织中表达情况研究进展	刘有 张晓欢 苗兰英等	(2397)
·科学快讯·		
Nature: 研究揭示蛋白 Piezo2 调节肺部充气		(I)
《现代生物医学进展》杂志简介及投稿指南		(V)

责任编辑:王念、武海艳、郭晓东、李寿朋、王国华、陈文、田向荣、曾垂凯、陶维东、刁文一、崔玉宝
英文编辑:田林杰、王娟、杨尚琴、李媛媛、吕志刚、马军、符波、朱杰、许愿忠、靳大川、岳颖、陈芸芸
执行编辑:谢建平、曾乐平、刘子馨、郑林丰、王雪、周利红、周颖、张玉环、董佩锋、朱英杰、万民熙
封面设计:曾乐平、彭安安

Progress in Modern Biomedicine

Established in April 2001

Volume 17 Number 12

April 30 2017

Responsible: The public Health Bureau of Heilongjiang province
Sponsor: Heilongjiang Province Forestry General Hospital
The Fourth Hospital of Harbin Medical University

Cosponsor: Harbin Institute of Technology
Shanghai Jiao Tong University
Affiliated First People's Hospital
Editing: Editorial Board of Progress in Modern Biomedicine

No.32, Hexing Road, Harbin 150040

Tel:(0451) 82583800

<http://biomed.net.cn>

<http://biomed.cnjournals.com>

<http://www.shengwuyixue.com>

<http://swcx.periodicals.net.cn>

E-mail: biomed_54@126.com

E-mail: liudhui_21@126.com

E-mail: biomagnetism@163.com

Academic Adviser: YANG Bao-feng

LIU Song-hao

RUAN Chang-geng

ZENG Yi-tao

HE Lin

FU Shi-ying

WANG Nai-qian

LIU Yu-qing

HAO Xi-shan

ZENG Yi-xin

ZHANG Qi-fan

Editor-in-chief:

SHEN Bao-zhong

Executive-Editor-in-chief:

CUI Jian-hua

Associate-Executive-Editor-in-chief:

MENG Qing-gang

Associate Editor-in-chief: LI Yu

ZHANG Gui-xiang

HUANG Wen-hua

HUANG Ju-fang

LIU Ping

LV huan-zhu

ZENG Le-ping

TANG Yi-yuan

ZENG Fan-yi

LIU Ming

DAI Wen-jie

ZHANG Qing-yuan

Managing Director:

LIU Tong-kui

Managing Associate Director:

LIU Zi-xin

XIE Jian-ping

ZHENG Lin-feng

Address of Editorial Department:

150001, Harbin No.54 Post-office box

(Room 403, No.184 at Huayuan Street, Harbin)

Tel: 0451-82583800 0451-53658268

Publishing: House, Journal of Progress in Modern Biomedicine

Printing: Harbin city Gongda save energy printing House

Overseas Distributor: China International

Book Trading corporation.

P.O Box 399, Beijing, code No.Q1728

Mail-Order: Editorial Department of publishing

House, Progress in Modern Biomedicine

Harbin 54 Post-office box, Harbin 150001

Tel: 0451-53658268 0451-82583800

CSSN: ISSN 1673-6273
CN 23-1544/R

Copyright 2017 by the publishing

House of Progress in Modern Biomedicine

All articles published represent the opinions of the authors, do not reflect the official policy of the Editorial Board of Progress in Modern Biomedicine unless this is clearly specified.

Contents in Brief

ORIGINAL ARTICLES

·BASIC RESEARCH·

Influence of Bub1 Gene on the Cell Proliferation,

Cell Cycle and Apoptosis in Human Hepatocellular

Carcinoma Cell Line MHCC97-H

PU Meng, WANG Jian-lin, HUANG Qi-ke, et al

..... (2201)

Change and Significance of Homocysteine in Heart Failure

Post Myocardial Infarction in Rat

MENG Wei-dong, XU Bin, LIU Xiao-xiao, et al

..... (2205)

The Protective Effect of Montelukast Sodium

on CBV3 Infection in Mice Myocardium

ZHOU Jie, HUANG Xing-Yuan, WEI Li, et al

..... (2209)

Establishment of Cochlear Electrode Implantation

in a Deaf Guinea Pig Model by Kanamycin

HAN Peng, ZHANG Rui, GAO Ying, et al

..... (2214)

The Effect of IL-17 on the Proliferation and Metabolism

of Nucleus Pulposus Cells Cultured in Vitro

ZHANG Hong-yue, ZHOU Pan-yu, WANG Yang, et al

..... (2218)

The Experiment Study of Small Diameter Intravascular Catheter

ZHANG Jian-lei, CHEN Yong-xiang, ZANG Cheng-wu, et al

..... (2223)

Progress in Modern Biomedicine

Established in April 2001

Volume 17 Number 12

April 30 2017

Effect and Mechanism of UA on the Proliferation of MG-63

WANG Shu-fang, YANG Nai-long, SUN Yu-ying, et al (2227)

Hyperoxia Inhibits LPS/ATP-Induced Pyroptosis of Bone Marrow Derived Macrophages

YIN Wan-wan, LI Xiang-rui, YAN Jin-qi, et al, et al (2232)

Expression and Significance of MACC-1 and C-Met

in the Oral Leukoplakia and Oral Squamous Cell Carcinoma

WANG Bin, ZHANG Xing-wei, YAN Bing-kun, et al (2236)

Detection of Potential Tumor Markers in Pancreatic Carcinoma

and Its Application in Pancreatic Cancer

QIAO Bo-wei, YIN Ruo-zhe, FANG Cheng, et al (2241)

·CLINICAL RESEARCH·

Analysis of the Characteristics and Prognosis of Apoplexy

in Nonfunctioning Pituitary Macroadenoma

QIU Ji-ting, HU Hong-kang, ZHU Jun-le, et al (2247)

Risk Factors and Prognosis of Invasive Pulmonary Fungal Infection in Patients with Diabetes Mellitus

TIAN De-xing, TANG Wei, XIAO Zhen-liang, et al (2252)

Comparison of the Clinical Efficacy of Two Kinds of Minimally Invasive Surgery

in the Treatment of Elderly Patients with Mixed Hemorrhoids

ZHAN Min, LI Kui, YAN Jian, et al (2256)

Influence of TLR4, Plasma Inflammatory Cytokines and Interleukins on Acute Pancreatitis Patients

Bicontinuous Blood Purification Treatment Combined with Ulinastatin

LI Ke, LIU Ming-hua, ZHANG Lei, et al (2260)

Expression of Perioperative Serum TNF- α , NO, IGF- II in Patients with Gastric Cancer

and its Significance

ZHOU Si-xin, LU Can-rong, PENG Zheng, et al (2264)

Effects of Leuprorelin Acetate on the Serum HE4, ENA78 Levels in Patients

with Endometriosis Postoperation

LI Li-ling, WANG Xiang-hong, LIU Ni-ying, et al (2267)

Analysis of the Correlation of Serum Levels of Gamma-GGTP with the Elderly Patients

with Type 2 Diabetes Mellitus Complicated with Acute Coronary Syndrome

GAO Xiu-rong, JI Zong-shan, YU Qing-zhi, et al (2271)

Progress in Modern Biomedicine

Established in April 2001

Volume 17 Number 12

April 30 2017

- Relationship of Severity and Ultrasonic Parameters of Carotid Atherosclerosis
in Patients with Coronary Heart Disease**
HAO Mei-jia, CHEN Wen-wei, WANG Dong, et al (2275)
- Expressions of Hepatocyte Growth Factor and Matrix Metalloproteinases -9
in Henoch-Schonlein Purpura**
Adilijiang·Kari, Amangu·Abudushalamu, GUO Yan-fang, et al (2279)
- Effects of Wenxin Granules on Heart Rate Variability and Serum Levels of Inflammatory Factors
in Patients with Acute Myocardial Infarction**
WANG Xia-yun, CHEN Min, QUAN Shou-xia, et al (2282)
- Ultrasound Elasticity Imaging Contrast between Benign Breast Disease and Breast Cancer**
JIN Xiu-hong, ZHAO Yi-wen, WANG Lan, et al (2286)
- Expression of miR-338-3p and its Relationship with Clinicopathological Parameters
in Hepatocellular Carcinoma**
DOU Chun-qing, JIN Xin, SUN Li-yuan, et al (2290)
- Application and the Influence of Modified Cranial Fossa Decompression
on the Cerebrospinal Fluid Dynamics of Patients with Type I Chiari Malformation**
WANG Jiang-feng, LIU Jin-dao, DONG Tao, et al (2294)
- Influence of Ligustrazine Injection on Clinical Symptoms and Hemorheology
in Patients with Coronary Heart Disease and Angina Pectoris**
DU Hui, ZHANG Wen-wen, NIU Jun-yi, et al (2298)
- Clinical Efficacy of Dopamine Combined with Phentolamine in Treatment of Children
with Serious Pneumonia Complicated with Heart Failure and Its Effect on Myocardium Enzymes**
HUANG Ni-na, GAO Xiao-peng, ZHANG Yu-dan, et al (2302)
- Clinical Effect of Seretide Combined with Spiriva on the Chronic Obstructive Pulmonary Disease
Patients and Its Effect on Sputum Neutrophils, IL-8 and TNF- α Levels**
ZHOU Ding, FU Mei-hong, WANG Jia-man, et al (2306)
- Curative Effect Observation of Acupuncture Combined with Chinese Medicine
in Treatment of Postoperative Gastrointestinal Dysfunction of Colorectal Cancer Patients**
LI Bo-ping, PANG Hong-wei, HE Yi-jie, et al (2310)

Progress in Modern Biomedicine

Established in April 2001

Volume 17 Number 12

April 30 2017

- The Preventive Effect of Basic Fibroblast Growth Factor on the Serum IL-6 Level and Density of Alveolar Bone of Patients Underwent Mandibular Impacted Teeth Extraction**
FENG Ying, GUO Li, XIE Yi-dun, et al (2314)
- Comparison of Treatment Efficacy of Condylar-wing Muscles Anatomic Reduction with Free Reduction in the Treatment of Condylar Fractures**
LIU Yang, WANG Yi, HU Lei, et al (2317)
- Variety and Value of Coagulation-fibrinolysis Function and Platelet Indexes before and after Surgery of Breast Cancer Patients**
LIU Lan-lan, MA Xue-ping, SONG Na, et al (2321)
- Influence of Different Treatment Methods for Serum Inflammatory Reactions of Patients with Coronary Heart Disease and Heart Valve**
MA En, WANG Zong-she, SHU Duan-zhao, et al (2325)
- Risk Factors of Contrast Media Induced Nephropathy in Elder Patients with Coronary Heart Disease after Percutaneous Coronary Intervention**
YU Yun-hua, HE Rong-rong, YU Ya-mei, et al (2328)
- Clinical Efficacy of Tanreqing Injection Combined with Naloxone in the Treatment of Elderly Patients with Chronic Respiratory Failure and Pulmonary Encephalopathy**
TANG Yan-yu, LIU Gang, LONG Xiang-yu, et al (2332)
- Effect of Qiliqiangxin Capsule Combined with Bisoprolol on Elderly Patients with Heart Failure**
JIN Long, CHENG Kang, LV Ya-li, et al (2335)
- Clinical Study of Echocardiography in the Evaluation of Fetal Heart Structure and Function in Pregnant Women with Gestational Diabetes Mellitus**
SHI Wei, LIU Hai-xia, LUO Yi, et al (2338)
- Effect of Montmorillonite Powder Combined with Zhixie Baotong Granula on the Serum CRP and Myocardial Enzyme Spectrum Level in Children with Diarrhea**
LEI Juan-juan, FENG Hui-ling, HAO Jing-jing, et al (2342)
- Clinical Value of the combination of Serum AFP, CEA, CA125 Levels in the Diagnosis of Early Stage of Primary Hepatic Cancer**
WANG Xi-hui, JIANG Zu-hui, ZHOU Qiong-xian, et al (2346)

Progress in Modern Biomedicine

Established in April 2001

Volume 17 Number 12

April 30 2017

-
- Clinical Efficacy of Small Incision Approach Locking Plate
in Treatment of Proximal Humeral Fractures in Elderly Patients**
LI Hong-wei, SHAN Le-qun, CHAI Zhen, et al (2349)
- Effects of Guizhi Fuling Pills Combined with Fu Le Tablets on the Levels of Serum AFP
and LSA in the Patients with Endometriosis and Its Clinical Efficacy**
YANG Lei, HUANG Zhi-lan, JING Yuan, et al (2353)
- Clinical Efficacy and Security of Psychotherapy Combined with Risperidone
in the Treatment of Patients with Schizophrenia**
LU Bao, LIANG Yue-zhu, WANG Chun-gang, et al (2357)
- Application of Acute Normovolemic Hemodilution(ANH) Autohemotransfusion
in Complete Placenta Previa Merged Placenta Increta Cesarean Section**
GUO Xian-he, MA Li, LIU Yuan-yuan, et al (2361)
- MONOGRAPHS AND REVIEWS·**
- Application of Fluorescence Micro-imaging System in Experimental Teaching of Medical Cell Biology**
WU Jiao, LI Yong, NAN Gang, et al (2364)
- Teaching Experience of Cades Psychological Evaluation**
HUI Duo-duo, MA Jin, ZHANG Li-li, et al (2368)
- MONOGRAPHS AND REVIEWS·**
- Epigenetics and Its Research Methods**
ZHU Feng, WANG Xu, LIU Qian-ying, et al (2371)
- Efflux Transporter-Mediated Antifungal Drug Resistance**
WANG Wei, SHAO Long, ZHENG Na, et al (2377)
- Cognitive Progress of Chinese and Western Medicine for Metabolic Syndrome**
LIU Zi-jun, GUO Wei, HAN Yu-bo, et al (2381)
- Progress in Treatment of Vasovagal Syncope**
ZHOU Yi-ming, YUAN Jin-hui, LV Jia-ming, et al (2386)
- Insulin Resistance and Altered mTORC1 Signaling Expression in Chronic Kidney Disease**
LI Jiao, XU Zhuo, ZHAO Yang, et al (2390)
- Progress of MicroRNA-203 in Colorectal Cancer**
PENG Yi, PENG Xiu-da, LIU Long-fei, et al (2394)
- The Research Progress of HLA-G Expression on Tumor Tissues**
LIU You, ZHANG Xiao-huan, MIAO Lan-ying, et al (2397)



中国科技核心期刊

(中国科技论文统计源期刊)

收录证书

CERTIFICATE OF SOURCE JOURNAL

FOR CHINESE SCIENTIFIC AND TECHNICAL PAPERS AND CITATIONS

现代生物医学进展

经过多项学术指标综合评定及同行专家
评议推荐，贵刊被收录为“中国科技核心期
刊”（中国科技论文统计源期刊）。

特颁发此证书。

中国科学技术信息研究所

Institute of Scientific and Technical Information of China

北京复兴路 15 号 100038

www.istic.ac.cn

2016 年 10 月

证书编号：F250-2016-1641

有效期至：2017 年 12 月