

ISSN 1672-061X

CN11-5867/U



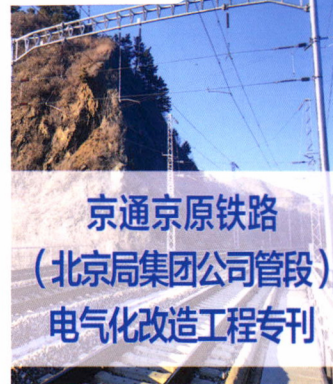
QK2222417

铁路 技术 **创新**

Railway Technical Innovation

2

2022年
(双月刊)



京通京原铁路
(北京局集团公司管段)
电气化改造工程专刊



**京铁精神：报效祖国 忠于职守
艰苦奋斗 勇当先锋**



中国铁路北京局集团有限公司
China Railway Beijing Group Co.,Ltd.

广告

ISSN 1672-061X



9 771672 061224

主管：中国国家铁路集团有限公司
主办：中国铁道科学研究院集团有限公司

目次 | CONTENTS

1 京通京原铁路(北京局集团公司管段)电气化改造工程专刊 1

- 01 京通铁路电气化改造封闭施工组织方法**..... 刘燕涛 周兴宇 周鹤
Enclosed Engineering Method for Electrification of Beijing-Tongliao Railway LIU Yantao, et al
- 07 京通铁路电气化改造换梁工程关键环节控制与优化**..... 王志刚
Control and Optimization of Critical Links of Beam Replacement for Electrification of Beijing-Tongliao Railway WANG Zhigang
- 14 接触网柱式B型弹簧补偿装置在低净空隧道中的应用**..... 郭亮 卢炳杨 冯新战
Application of OCS Column Type B Spring Compensation Device in Low Clearance Tunnel..... GUO Liang, et al
- 19 京通铁路电气化改造站间安全信息传输系统应用及故障辨识处理**..... 曹俊英
Application of and Fault Identification and Repair for Inter-station Safety Information Transmission System of Beijing-Tongliao Railway Under Electrification CAO Junying
- 25 180 min天窗一步到位更换接触网承力索和接触线施工工艺**..... 卢炳杨 邓怀宏
Construction Process for One-step Replacement of OCS Catenary and Contact Wire During 180 min Window LU Bingyang, et al
- 30 牵引变电所27.5 kV所用变压器电能净化研究**..... 文稳利
Research on Power Purification of 27.5 kV Transformer in Traction Substation..... WEN Wenli
- 35 京通铁路通信冗余组网方案设计与应用**..... 周立
Design and Application of Redundant Communication Networking Scheme for Beijing-Tongliao Railway..... ZHOU Li
- 43 山区铁路GSM-R覆盖研究与应用**..... 鲜先华 王志刚
Research and Application of GSM-R Coverage for Mountain Railway..... XIAN Xianhua, et al
- 47 铁路车站信号改造工程道岔过渡施工技术**..... 张杰
Turnout Transition Construction Technology in Railway Station Signaling Upgrade Project..... ZHANG Jie
- 52 既有线电气化改造防雷接地施工质量控制**..... 陈星翰
Project Quality Control of Lightning Protection and Earthing for Electrification of Existing Lines..... CHEN Xinghan
- 58 既有运营铁路桥墩加固施工组织与控制**..... 张彦峰
Construction Organization of Bridge Pier Reinforcement of Existing Operating Railways..... ZHANG Yanfeng

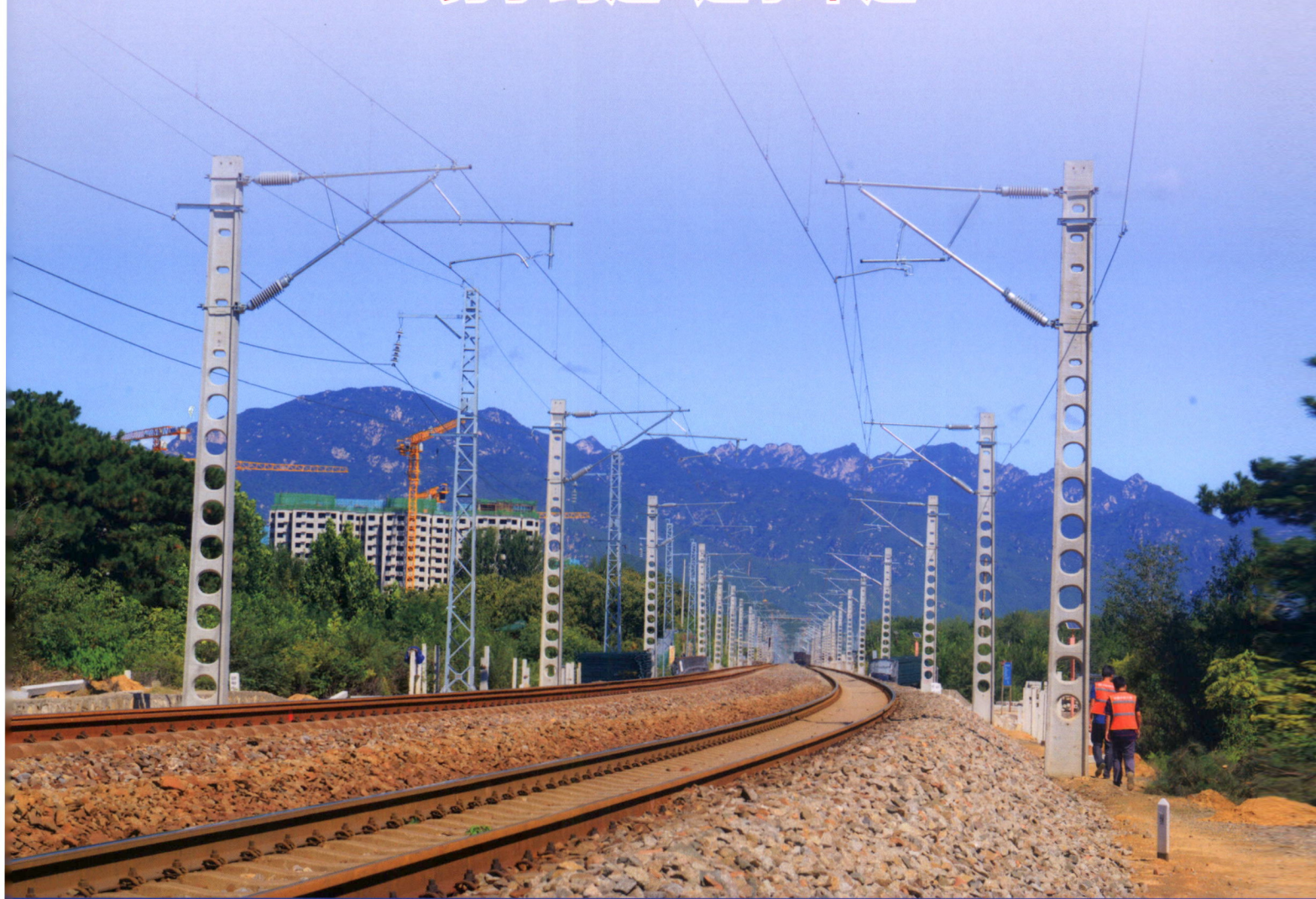
- 63 京原铁路隧道衬砌渗漏水病害整治施工技术 张同保 王志刚
Construction Technology for Disease Treatment against Water Seepage and Leakage of Tunnel Lining of Beijing-Yuanping Railway ZHANG Tongbao, et al
- 70 既有线多股道高落差线路加固施工 刘宝超 李晓明 张强
Reinforcement Construction of Existing Railway with Multiple Tracks And Large Height Difference LIU Baochao, et al
- 76 京通铁路电气化改造平改立工程质量控制与管理 曹庆贵 高宁 赵德录
Quality Control and Management of “Level Crossing to Interchange” Works of Electrification of Beijing-Tongliao Railway CAO Qinggui, et al
- 81 铁路工程轨道铺设施工技术 周泽旭
Construction Technology of Track Laying in Railway Engineering ZHOU Zexu
- 86 既有线机务折返段新建整备棚方案优化探讨 殷雪坤
Discussion on the Scheme Optimization for New Servicing Shed in Locomotive Turnaround Depot of Existing Line YIN Xuekun
- 91 铁路站房钢结构防火涂装质量控制关键技术 肖波
Key Technologies for Quality Control of Fireproof Coating for Steel Structure of Railway Station Building.. XIAO Bo
- 97 普速铁路有砟轨道12号道岔环境振动实测特征及预测方法 张利 刘燕涛 李晓明 陈长君
Measured Characteristics and Prediction Methods of Environmental Vibration for No. 12 Turnout of Ballasted Track of Conventional Railway ZHANG Li, et al
- 103 生物生态耦合工艺在铁路站房生活污水处理中的应用 陈长君 金建军 李亚密 杨帆 卢雅文
Application of Biological Ecological Coupling Process in Domestic Sewage Treatment of Railway Station Building CHEN Changjun, et al
- 108 京原铁路既有线声屏障施工建议与应用 王秋雨 闫成天
Construction Suggestions and Application of Sound Barrier of Existing Line of Beijing-Yuanping Railway ... WANG Qiuyu, et al
- 116 既有山区铁路声屏障工程桩基静载试验方法 张拯渊
Methods of Static Load Test for Foundation Piles of Noise Barrier for Existing Mountain Railway ZHANG Zhengyuan
- 121 铁路大直径隧道下穿地铁车站风险控制 卢雅文 尹云龙 肖波
Risk Control of Large-diameter Railway Tunnels Undercrossing Metro Stations LU Yawen, et al
- 126 “双安”文化在打造安全标准项目中的作用 廖东海
The Role of “Double Safety” Culture in the Projects with Safety Standards LIAO Donghai



中铁六局集团电务工程有限公司

中铁六局集团电务工程有限公司以建设精品工程为宗旨，主要从事**铁路信号、通信信息、电力、牵引供电、城市轨道交通、高速公路机电安装**等工程建设，致力于企业现代化管理水平提升和品牌建设，走出了一条电务专业特色的科技强企之路。

勇于跨越 追求卓越



地址：北京市丰台区南四环西路188号15区10号楼中铁六局集团电务工程有限公司
邮编：100071 电话：010-52226648