



# 西安交通大学学报

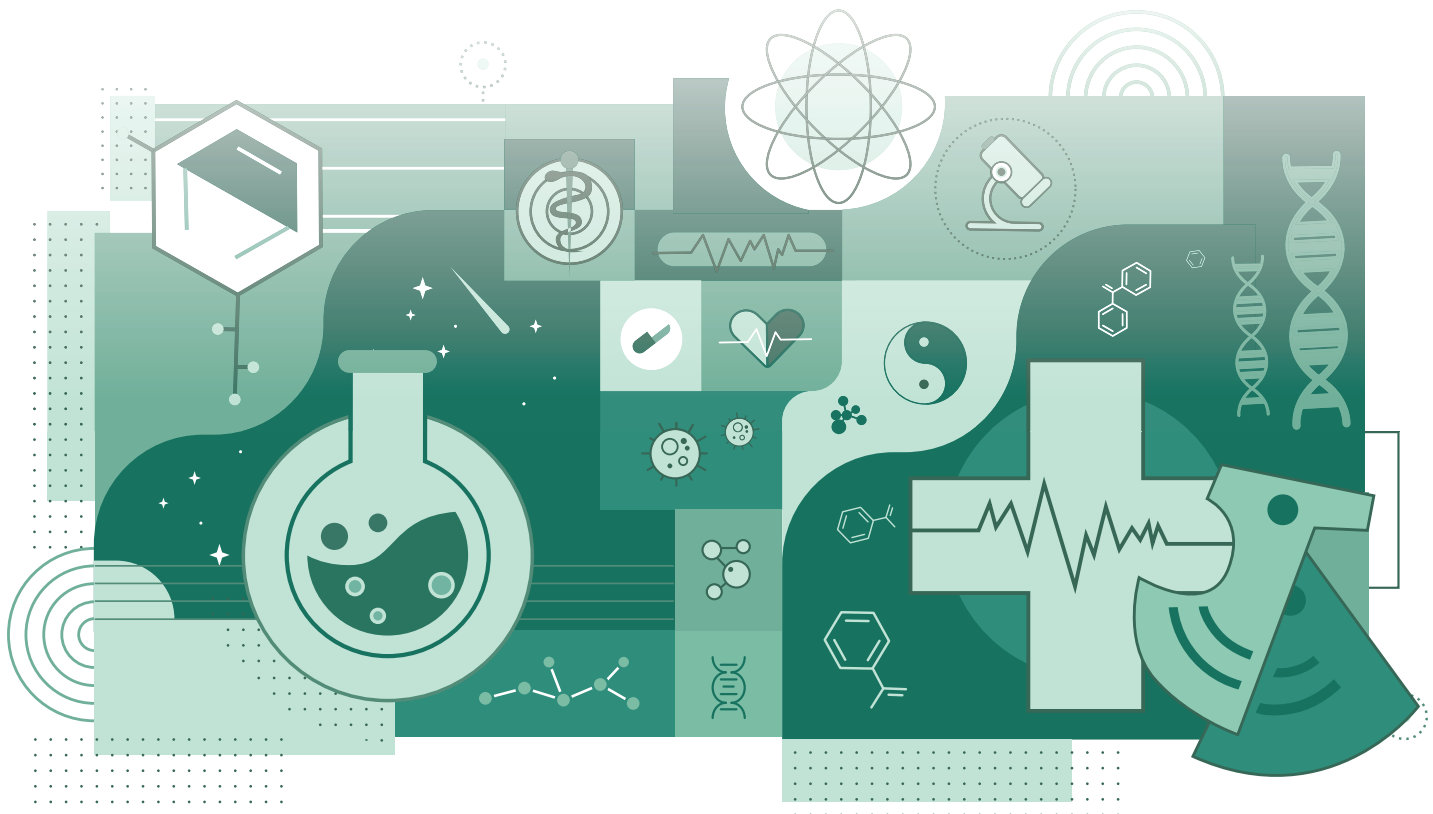
JOURNAL OF XI'AN JIAOTONG UNIVERSITY

## 医学版

Medical Sciences

•  
•《            》  
• 《            》

•  
• “            ”



西安交通大学学报(医学版)  
Xi'an Jiaotong Daxue Xuebao (Yixueban)  
第 43 卷 第 2 期 2022 年 3 月 (总第 235 期)

专家述评

前列腺癌 PSMA PET/CT 显像的应用现状与思考 ..... 段小艺(163)

前列腺癌 PET/CT 靶向成像

<sup>18</sup>F-PSMA-1007 PET/CT 在前列腺癌寡转移与疗效评估中的价值 ..... 王卓楠, 郑安琪, 高俊刚, 等(168)

<sup>18</sup>F-PSMA-1007 PET/CT 对前列腺癌初诊患者转移灶的检出率及其影响因素分析 ..... 白璐, 郑安琪, 高俊刚, 等(173)

<sup>18</sup>F-PSMA-1007 PET/CT 显示前列腺癌及浸润范围与临床病理的对照研究 ..... 沈聪, 李运轩, 郑安琪, 等(179)

<sup>18</sup>F-PSMA-1007 PET/CT 全身肿瘤负荷预测前列腺癌血清 PSA 进展的价值 ..... 李运轩, 郑安琪, 沈聪, 等(186)

PCPT-RC 高风险概率联合 Gleason 评分对初诊前列腺癌转移风险的预测价值 ..... 郑安琪, 李运轩, 王卓楠, 等(191)

基础研究

胰岛素对人心肌细胞 QT 间期及诱发心律失常的影响 ..... 谢学刚, 魏峰, 张玉顺, 等(196)

基于整合转录组学分析丝氨酸蛋白酶抑制剂 Hespintor 抑制肝癌裸鼠移植瘤生长的潜在机制 ..... 伦永志, 孙杰, 魏玲, 等(202)

头针疗法对缺血性中风大鼠脑神经元的保护作用及对 PI3K/Akt 通路的影响 ..... 汤博, 王霞, 吴福建, 等(213)

中枢神经系统性原始神经外胚层瘤基因表达谱芯片的生物信息学分析 ..... 赵文慧, 徐冬祥, 钟雷, 等(220)

内脂素-Nampt 轴在卵巢上皮癌进展中的作用 ..... 白娥, 王丽, 李海军, 等(228)

宫颈脱落细胞中人乳头瘤病毒 58 型感染及整合状况分析 ..... 徐媛, 张放, 王静, 等(234)

临床研究

慢性盐负荷对成年人血清和尿液中尿调节素水平的影响 ..... 汪洋, 牛泽家馨, 王兰, 等(241)

磁控胶囊内镜与传统胶囊内镜在小肠疾病中的应用比较 ..... 伍芳丽, 李晶, 卢桂芳, 等(247)

胃癌 Wnt 信号通路相关基因预后模型的构建 .....	田莲莲,朱 军,马 骞,等(252)
放疗在复发转移肾脏黏液样小管状和梭形细胞瘤局部治疗中的意义 .....	韩亚轩,张晓智,张 越,等(258)
基于数字三维技术确定腰 4/5 椎弓根螺钉进钉点的精确性 .....	武世勋,刘时璋,凌 鸣,等(263)
后路寰枢关节松解治疗不稳定型颅颈交界区畸形的疗效分析 .....	王 宁,鲍 刚,廉民学,等(269)
应用不同消毒方法清除新型冠状病毒核酸污染的效果观察 .....	安 超,施嘉楠,何瑞芬,等(273)

## 中医药研究

基于网络药理学和生物信息学的姜黄素抑制肾透明细胞癌增殖的机制 研究 .....	段万里,翟宇瑶,潘思源,等(278)
基于数据挖掘及网络药理学探讨中药灌肠治疗慢性肾疾病的核心中药 及机制 .....	崔移明,彭贵军,胡 心,等(286)

## 公共卫生研究

全面二胎政策下西安市新生儿出生体质量的影响因素分析 .....	杨 静,刘美丹,赵 宏,等(297)
区域环境因素对健康成年人中性粒细胞与淋巴细胞比值参考值的响应 .....	李佳鑫,葛 森,张 雷,等(302)

## 专家综述

PI3K/AKT 信号通路调控骨关节疾病软骨细胞自噬及损伤的机制 .....	邓 欢,吕艺蓁,刘 宣,等(309)
--	--------------------

## 消 息

西安交通大学学报(医学版)《优秀稿件征集启事》 .....	(178)
医学部科研团队在噬菌体抑菌及抗菌、抗疟策略领域取得重要进展 .....	(219)
医学部科研人员在快速预防术后粘连和粘连复发方面取得重要进展 .....	(277)

执行编辑 卓选鹏 审 读 卓选鹏 英文审校 范晓晖 封面设计 薛卫真 陈丽如

期刊基本参数:CN 61-1399/R \* 1937 \* b \* A4 \* 152 \* zh \* P \* ¥45.00 \* 1200 \* 24 \* 2022-03

# JOURNAL OF XI'AN JIAOTONG UNIVERSITY (MEDICAL SCIENCES)

Vol. 43 No. 2 Mar. 2022 Gen. No. 235

---

## Specialists' Review

Current status and thoughts of PSMA PET/CT imaging application for prostate cancer

..... DUAN Xiaoyi (163)

## PET/CT Imaging Targeting Prostrate Cancer

The value of  $^{18}\text{F}$ -PSMA-1007 PET/CT in evaluating oligometastatic and curative effects of

prostate cancer ..... WANG Zhuonan, ZHENG Anqi, GAO Jungang, et al (168)

The value of  $^{18}\text{F}$ -PSMA-1007 PET /CT in detecting the risk of metastasis in patients newly

diagnosed with prostate cancer..... BAI Lu, ZHENG Anqi, GAO Jungang, et al (173)

Comparison of  $^{18}\text{F}$ -PSMA-1007 PET/CT showing prostate cancer and its infiltration area

with its clinicopathology ..... SHEN Cong, LI Yunxuan, ZHENG Anqi, et al (179)

The value of  $^{18}\text{F}$ -PSMA PET/CT whole body tumor burden in predicting the serum PSA

progression in prostate cancer ..... LI Yunxuan, ZHENG Anqi, SHEN Cong, et al (186)

The value of PCPT-RC high risk probability combined with Gleason score for predicting

the risk of metastasis in newly diagnosed prostate cancer

..... ZHENG Anqi, LI Yunxuan, WANG Zhuonan, et al (191)

## Laboratory Investigation

Effects of insulin on the QT interval and induced arrhythmias of human cardiomyocytes

..... XIE Xuegang, WEI Feng, ZHANG Yushun, et al (196)

Serine protease inhibitor Hespintor's potential mechanism based on integrated

transcriptomics in inhibiting the growth of transplanted hepatoma in nude mice

..... LUN Yongzhi, SUN Jie, WEI Ling, et al (202)

The protective effect of scalp acupuncture on cerebral neurons in rats with ischemic stroke and its influence on PI3K/Akt pathway ..... *TANG Bo, WANG Xia, WU Fujian, et al* (213)

Bioinformatics analysis of gene expression profile of central nervous system primitive neuroectodermal tumors ..... *ZHAO Wenhui, XU Dongxiang, ZHONG Lei, et al* (220)

Role of visfatin-intracellular Nampt axis in the progression of epithelial ovarian cancer ..... *BAI E, WANG Li, LI Haijun, et al* (228)

Human papillomavirus type 58 infection and integration in exfoliated cervical cells ..... *XU Yuan, ZHANG Fang, WANG Jing, et al* (234)

## Clinical Investigation

Effects of salt intake serum and urinary uromodulin levels in Chinese adults ..... *WANG Yang, NIU Zejiixin, WANG Lan, et al* (241)

Comparison of the application value of magnetic-controlled capsule endoscopy and traditional capsule endoscopy in the diagnosis of intestinal diseases ..... *WU Fangli, LI Jing, LU Guifang, et al* (247)

Establishment of a prognostic model of Wnt signaling pathway related genes in gastric cancer ..... *TIAN Lianlian, ZHU Jun, MA Qian, et al* (252)

The significance of radiotherapy in local treatment of recurrent and metastatic mucinous tubular spindle cell carcinoma of the kidney ... *HAN Yaxuan, ZHANG Xiaozhi, ZHANG Yue, et al* (258)

Determining the accuracy of lumbar 4/5 pedicle screw entry point based on digital three-dimensional technology ..... *WU Shixun, LIU Shizhang, LING Ming, et al* (263)

Efficacy of posterior atlantoaxial joint release in treating craniovertebral junction deformity combined with atlantoaxial instability ..... *WANG Ning, BAO Gang, LIAN Minxue, et al* (269)

Comparison of disinfection effects of different methods for nucleic acid pollution in 2019-nCoV ..... *AN Chao, SHI Jianan, HE Ruifen, et al* (273)

## Traditional Chinese Medicine Investigation

The mechanism of curcumin inhibiting the proliferation of clear cell renal cell carcinoma

based on network pharmacology and bioinformatics

..... *DUAN Wanli, ZHAI Yuyao, PAN Siyuan, et al* (278)

The core traditional Chinese medicines and mechanism of traditional Chinese medicine

enema treatment of chronic kidney disease based on data mining and network

pharmacology ..... *CUI Yiming, PENG Guijun, HU Xin, et al* (286)

## Public Health Investigation

Factors influencing newborn birth weight under the universal two-child policy in Xi' an

..... *YANG Jing, LIU Meidan, ZHAO Hong, et al* (297)

Responses of regional environmental factors to the reference value of

neutrophil-lymphocyte ratio in healthy adults ..... *LI Jiaxin, GE Miao, ZHANG Lei, et al* (302)

## Review

Progress in research on PI3K/ AKT signaling pathway in autophagy and injury of

chondrocytes in osteoarticular diseases ..... *DENG Huan, LÜ Yizhen, LIU Xuan, et al* (309)