



ISSN 1671-8259

CN 61-1399/R

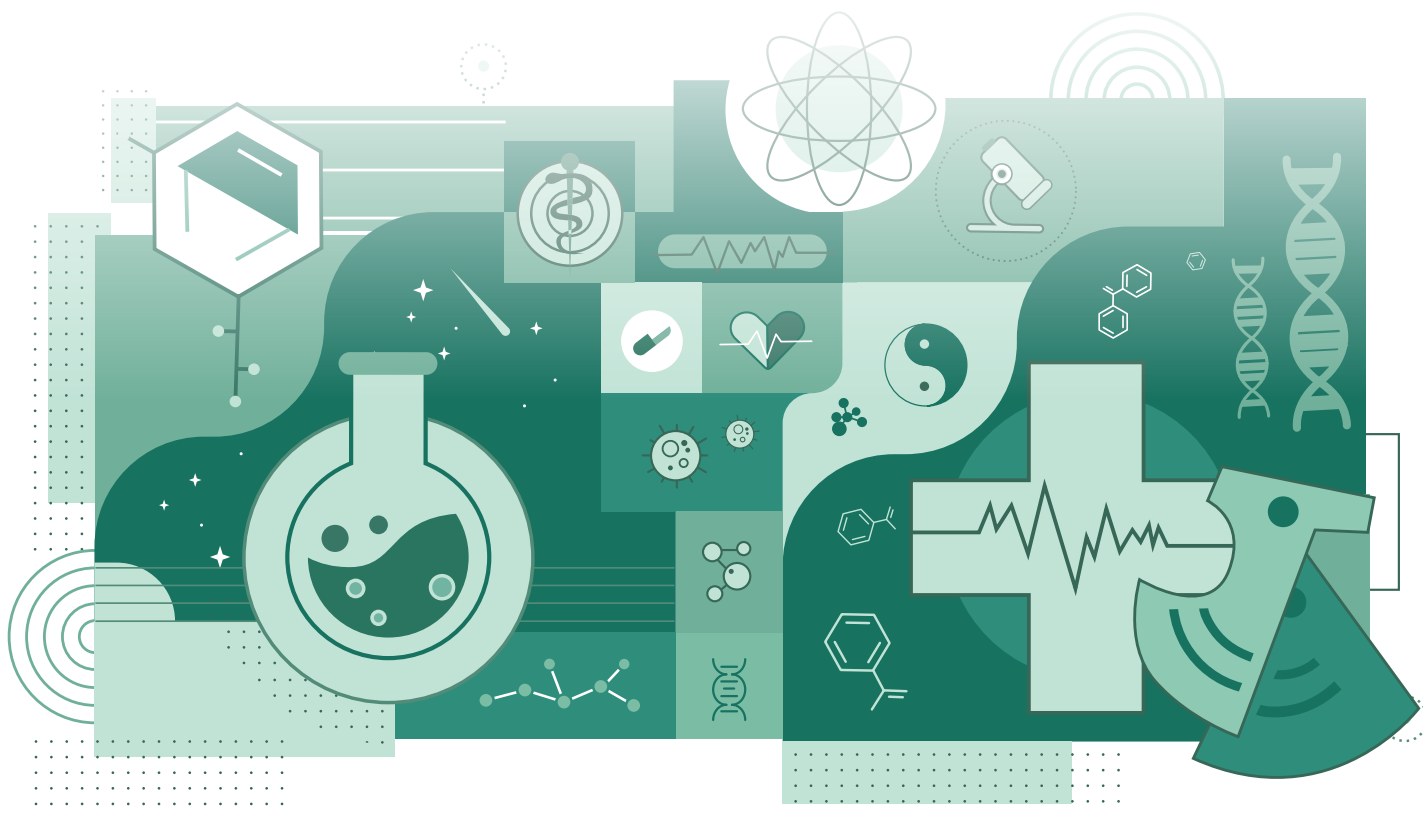
西安交通大学学报

JOURNAL OF XI'AN JIAOTONG UNIVERSITY

医学版
MEDICAL SCIENCES

2023年1月
第44卷 第1期

- 中国科学引文数据库 (CSCD) 核心期刊
- 《中文核心期刊要目总览》核心期刊
- 荷兰《文摘与引文数据库》(SCOPUS) 来源期刊
- 中国科技论文统计源核心期刊
- 中国高校百佳科技期刊
- “三秦卓越科技期刊”梯队期刊



西安交通大学学报(医学版)

Xi'an Jiaotong Daxue Xuebao (Yixueban)

第 44 卷 第 1 期 2023 年 1 月 (总第 240 期)

专家述评

我国常用肠道清洁剂的应用现状及一点看法..... 程 妍, 龚 均(1)

心血管专题研究

残余胆固醇与亚临床肾损伤发生风险的相关性分析.....

张 玺, 牛泽家馨, 胡桂霖, 杜鸣飞, 邹 婷, 张晓玉, 王 兰, 褚 超, 廖月圆, 马 琼, 王 丹, 王科科, 贾 昊, 陈 晨, 严 瑜, 孙 月, 郭统帅, 张 婕, 高卫华, 满子悦, 高 可, 罗文婧, 牟建军, 汪 洋(6)

单核细胞/高密度脂蛋白胆固醇比值与不稳定型心绞痛患者冠状动脉病变狭窄程度的相关性研究.....

..... 牛泽家馨, 王 丹, 胡桂霖, 常鸣珂, 郭统帅, 严 瑜, 甘宝玉, 刘 辉, 牟建军(14)

Corin 基因多态性与血压钠钾反应性的相关性分析..... 王 兰,

牛泽家馨, 郭艳杰, 刘乃溶, 姚艳妮, 杨贝贝, 王佳馨, 李 闯, 刘盼盼, 杨长娥, 杜鸣飞, 胡桂霖, 张 玺, 王 丹, 张晓玉, 褚 超, 廖月圆, 马 琼, 王科科, 贾 昊, 孙 月, 郭统帅, 高卫华, 牟建军, 汪 洋(22)

NEDD4L 基因多态性与血压钠钾反应性的相关性分析..... 牛泽家馨,

杜鸣飞, 胡桂霖, 张 玺, 王 丹, 王 兰, 罗文婧, 常鸣珂, 邹 婷, 张晓玉, 严 瑜, 褚 超, 廖月圆, 马 琼, 王科科, 贾 昊, 陈 晨, 孙 月, 郭统帅, 张 婕, 高卫华, 满子悦, 高 可, 牟建军, 汪 洋(30)

尿调节素基因多态性与血压钠钾反应性的相关性分析..... 吴 燕,

杜鸣飞, 张 玺, 王 兰, 胡桂霖, 牛泽家馨, 邹 婷, 张晓玉, 褚 超, 廖月圆, 马 琼, 王 丹, 王科科, 贾 昊, 陈 晨, 严 瑜, 孙 月, 郭统帅, 张 婕, 高卫华, 满子悦, 高 可, 罗文婧, 牟建军, 汪 洋(38)

M3 受体遗传变异与血压钠钾反应性的关联研究.....

张 玺, 胡桂霖, 牛泽家馨, 杜鸣飞, 邹 婷, 张晓玉, 王 兰, 褚 超, 廖月圆, 马 琼, 王 丹, 王科科, 贾 昊, 陈 晨, 严 瑜, 孙 月, 郭统帅, 张 婕, 高卫华, 闫睿晨, 高 可, 罗文婧, 牟建军, 汪 洋(46)

精神心理卫生专题

组织支持感与高校心理委员胜任力: 心理资本和应对效能的链式中介..... 王敬群, 操心, 陈子楠(55)

童年期虐待对精神分裂症患者的精神症状及药物疗效的影响.....

..... 董莹莹, 马青艳, 贾 敏, 周莉娜, 马现仓, 朱 峰, 王 崴(60)

当前医学心理学本科教育现状分析及启示.....

..... 胡梅生, 王艺莱, 刘权辉, 李正琦, 王晓霞, 张 莹, 靳广庆, 黄 鹏(66)

中国社区中老年人群抑郁症状与冠心病风险的相关性研究: 基于 CHARLS 数据库的实证分析.....

..... 郭丽阳, 刘 妮, 陈 策, 陈云春, 王 崴, 马现仓, 周莉娜(71)

基础研究

- miR*-208 基因 rs8022522 和 rs12894524 位点多态性在广西人群的分布 刘 潮,罗艳萍,谷嬉嬉,陈健明,蓝 艳,韦叶生(76)
- Fasudil 在 EAM 小鼠中通过抑制 NOTCH 信号通路下调 IL-6 表达 李彦军,王宇星,杨嘉凯,章培军,李宛容,张 威,刘杨青,张年萍(82)
- 巨噬细胞 MED1 缺失促进雌性 ApoE 和 LDLR 敲除小鼠动脉粥样硬化发展 温尔刚,高 杰,丁怡铭,鲍妙叶,张元鹄,张亚莉,赵四海,刘恩岐,白 亮(89)

临床研究

- 3D 打印辅助自体牙移植修复牙齿缺失的临床疗效评价 王 琰,韩 浩,那思家,屠军波(95)
- GSTM5 在前列腺癌中的表达及其对前列腺癌进展的潜在机制 张 莹,孙 娜,郭亚收,史传道,刘一笑(100)
- 全主动脉弓置换并支架象鼻术患者 rScO₂ 及 S100β 蛋白和 NSE 与围手术期神经认知障碍的关系 乔丽梅,李亚雄,王小燕,刘 源,宇云峰,陈 铨(107)

技术方法研究

- 基于 REDCap 系统建立性早熟病例对照研究数据采集及管理平台 秦煜洁,王琳浩,邓红阳,卢梦楠,米白冰,肖延风,周静(115)
- 肠梗阻术中无损伤肠减压装置的设计与应用效果 韦延强,王红云,成小燕,廖新华,张 昊(121)

中医药研究

- 消肿止痛合剂对大鼠皮瓣缺血再灌注损伤及 p38MAPK-PPAR γ /NF- κ B 信号通路的影响 宋 渊,王海刚,何志军,刘 涛,梁旭东,何元旭,沈稼轩,张团庄(126)
- 黄芪甲苷改善高糖诱导的足细胞损伤和线粒体功能障碍并抑制 Notch 通路激活 缪晓杰,桂定坤,陈玉强,吕 荣,李道鸿,杨绪枫(135)
- 物理康复联合小青龙汤治疗儿童哮喘缓解期肺脾气虚证的效果 孙安兵,杨殿福,户晓艳(142)

专家综述

- 下肢动脉慢性完全闭塞病变介入治疗的血管评估方案研究进展 薛双龙,张军波,李 尤,付博文,康梦阳,田红燕(147)

执行编辑 张 敏 审 读 卓选鹏 英文审校 范晓晖 封面设计 薛卫真 陈丽如

JOURNAL OF XI'AN JIAOTONG UNIVERSITY (MEDICAL SCIENCES)

Vol. 44 No. 1 Jan. 2023 Gen. No. 240

Specialists' Review

Application status and views of common bowel cleansing regimens in China
..... CHENG Yan, GONG Jun(1)

Special Topic on Cardiovasologic Research

Association between residual cholesterol and the risk of subclinical renal damage ZHANG Xi,
NIU Zejiixin, HU Guilin, DU Mingfei, ZOU Ting, ZHANG Xiaoyu, WANG Lan, CHU Chao, LIAO Yueyuan,
MA Qiong, WANG Dan, WANG Keke, JIA Hao, CHEN Chen, YAN Yu, SUN Yue, GUO Tongshuai,
ZHANG Jie, GAO Weihua, MAN Ziyue, GAO Ke, LUO Wenjing, MU Jianjun, WANG Yang(6)

Correlation between monocytes and high-density lipoprotein cholesterol ratio and coronary artery stenosis
in patients with unstable angina pectoris NIU Zejiixin, WANG Dan,
HU Guilin, CHANG Mingke, GUO Tongshuai, YAN Yu, GAN Baoyu, LIU Hui, MU Jianjun(14)

Associations of genetic polymorphisms in Corin with blood pressure responses to salt and potassium intake
..... WANG Lan, NIU Zejiixin, GUO Yanjie, LIU Nairong,
YAO Yanni, YANG Beibei, WANG Jiixin, LI Chuang, LIU Panpan, YANG Chang'e, DU Mingfei,
HU Guilin, ZHANG Xi, WANG Dan, ZHANG Xiaoyu, CHU Chao, LIAO Yueyuan, MA Qiong,
WANG Keke, JIA Hao, SUN Yue, GUO Tongshuai, GAO Weihua, MU Jianjun, WANG Yang(22)

Association of genetic variants in NEDD4L with blood pressure responses to dietary salt and potassium
intake NIU Zejiixin, DU Mingfei, HU Guilin,
ZHANG Xi, WANG Dan, WANG Lan, LUO Wenjing, CHANG Mingke, ZOU Ting, ZHANG Xiaoyu,
YAN Yu, CHU Chao, LIAO Yueyuan, MA Qiong, WANG Keke, JIA Hao, CHEN Chen, SUN Yue,
GUO Tongshuai, ZHANG Jie, GAO Weihua, MAN Ziyue, GAO Ke, MU Jianjun, WANG Yang(30)

Association of genetic variants in uromodulin with blood pressure responses to dietary salt and potassium
intake WU Yan, DU Mingfei, ZHANG Xi,
WANG Lan, HU Guilin, NIU Zejiixin, ZOU Ting, ZHANG Xiaoyu, CHU Chao, LIAO Yueyuan,
MA Qiong, WANG Dan, WANG Keke, JIA Hao, CHEN Chen, YAN Yu, SUN Yue, GUO Tongshuai,
ZHANG Jie, GAO Weihua, MAN Ziyue, GAO Ke, LUO Wenjing, MU Jianjun, WANG Yang(38)

Associations of genetic variants in M3 receptor with blood pressure responses to salt and potassium intake
..... ZHANG Xi, HU Guilin,
NIU Zejiixin, DU Mingfei, ZOU Ting, ZHANG Xiaoyu, WANG Lan, CHU Chao, LIAO Yueyuan,
MA Qiong, WANG Dan, WANG Keke, JIA Hao, CHEN Chen, YAN Yu, SUN Yue, GUO Tongshuai,
ZHANG Jie, GAO Weihua, YAN Ruichen, GAO Ke, LUO Wenjing, MU Jianjun, WANG Yang (46)

Special Topic on Psychiatric & Mental Health

Organizational support and competence of university psychological commissioners: A chain mediating
model of psychological capital and coping efficacy WANG Jingqun, CAO Xin, CHEN Zinan (55)

Childhood maltreatment on psychiatric symptoms and drug efficacy in patients with schizophrenia
DONG Yingying, MA Qingyan, JIA Min, ZHOU Lina, MA Xiancang, ZHU Feng, WANG Wei (60)

Analysis and enlightenment of the current situation of medical psychology undergraduate education in
China and foreign countries HU Meisheng, WANG Yilai,
LIU Quanhui, LI Zhengqi, WANG Xiaoxia, ZHANG Ying, JIN Guangqing, HUANG Peng (66)

Association between depressive symptoms and risk of coronary heart disease in middle-aged and elderly
Chinese community: An empirical analysis based on CHARLS database
GUO Liyang, LIU Ni, CHEN Ce, CHEN Yunchun, WANG Wei, MA Xiancang, ZHOU Lina (71)

Laboratory Investigation

Distribution of rs8022522 and rs12894524 polymorphisms of *miR*-208 gene in Guangxi population
..... LIU Chao, LUO Yanping, GU Xixi, CHEN Jianming, LAN Yan, WEI Yesheng (76)

Fasudil exerts a protective effect on down-regulation of IL-6 expression by inhibiting the NOTCH signaling
pathway in EAM mice LI Yanjun, WANG Yuxing,
YANG Jiakai, ZHANG Peijun, LI Wanrong, ZHANG Wei, LIU Yangqing, ZHANG Nianping (82)

Macrophage MED1 deficiency promotes the development of atherosclerosis in female ApoE and LDLR
knockout mice WEN Ergang, GAO Jie,
DING Yiming, BAO Miaoye, ZHANG Yuankun, ZHANG Yali, ZHAO Sihai, LIU Enqi, BAI Liang (89)

Clinical Investigation

Evaluation of clinical effect of 3D printing-aided autologous tooth transplantation for repairing tooth loss
..... WANG Yan, HAN Hao, NA Sijia, TU Junbo (95)

The expression of GSTM5 in prostate cancer and its potential mechanism for the progress of prostate cancer
..... ZHANG Ying, SUN Na, GUO Yashou, SHI Chuandao, LIU Yixiao (100)

Changes of regional cerebral oxygen saturation, S100 β protein and neuron specific enolase and their relationship with perioperative neurocognitive disorders in patients undergoing total aortic arch replacement and trunk stenting
..... *QIAO Limei, LI Yaxiong, WANG Xiaoyan, LIU Yuan, ZI Yunfeng, CHEN Cheng* (107)

Techniques and Methods

Establishment of the data capture and management platform for case-control study on precocious puberty based on REDCap system *QIN Yujie, WANG Linhao, DENG Hongyang, LU Mengnan, MI Baibing, XIAO Yanfeng, ZHOU Jing* (115)
Design and application effect of non-injury intestinal decompression device in intestinal obstruction surgery *WEI Yanqiang, WANG Hongyun, CHENG Xiaoyan, LIAO Xinhua, ZHANG Hao* (121)

Traditional Chinese Medicine Investigation

Effect of Xiaozhongzhitong Mixture on ischemia-reperfusion injury of rat skin flaps and p38MAPK-PPAR γ /NF- κ B signaling pathway *SONG Yuan, WANG Haigang, HE Zhijun, LIU Tao, LIANG Xudong, HE Yuanxu, SHEN Jiaxuan, ZHANG Tuanzhuang* (126)
Astragaloside IV improves podocyte injury and mitochondrial dysfunction induced by high glucose and inhibits Notch pathway activation
..... *MIAO Xiaojie, GUI Dingkun, CHEN Yuqiang, LÜ Rong, LI Daohong, YANG Xufeng* (135)
Effect of physical rehabilitation combined with Xiaoqinglong Decoction on the syndrome of lung and spleen deficiency in children with asthma remission *SUN Anbing, YANG Dianfu, HU Xiaoyan* (142)

Review

Advances in research on vascular assessment of lower extremity chronic total occlusion for interventional therapy
..... *XUE Shuanglong, ZHANG Junbo, LI You, FU Bowen, KANG Mengyang, TIAN Hongyan* (147)