



ISSN 1671-8259

CN 61-1399/R

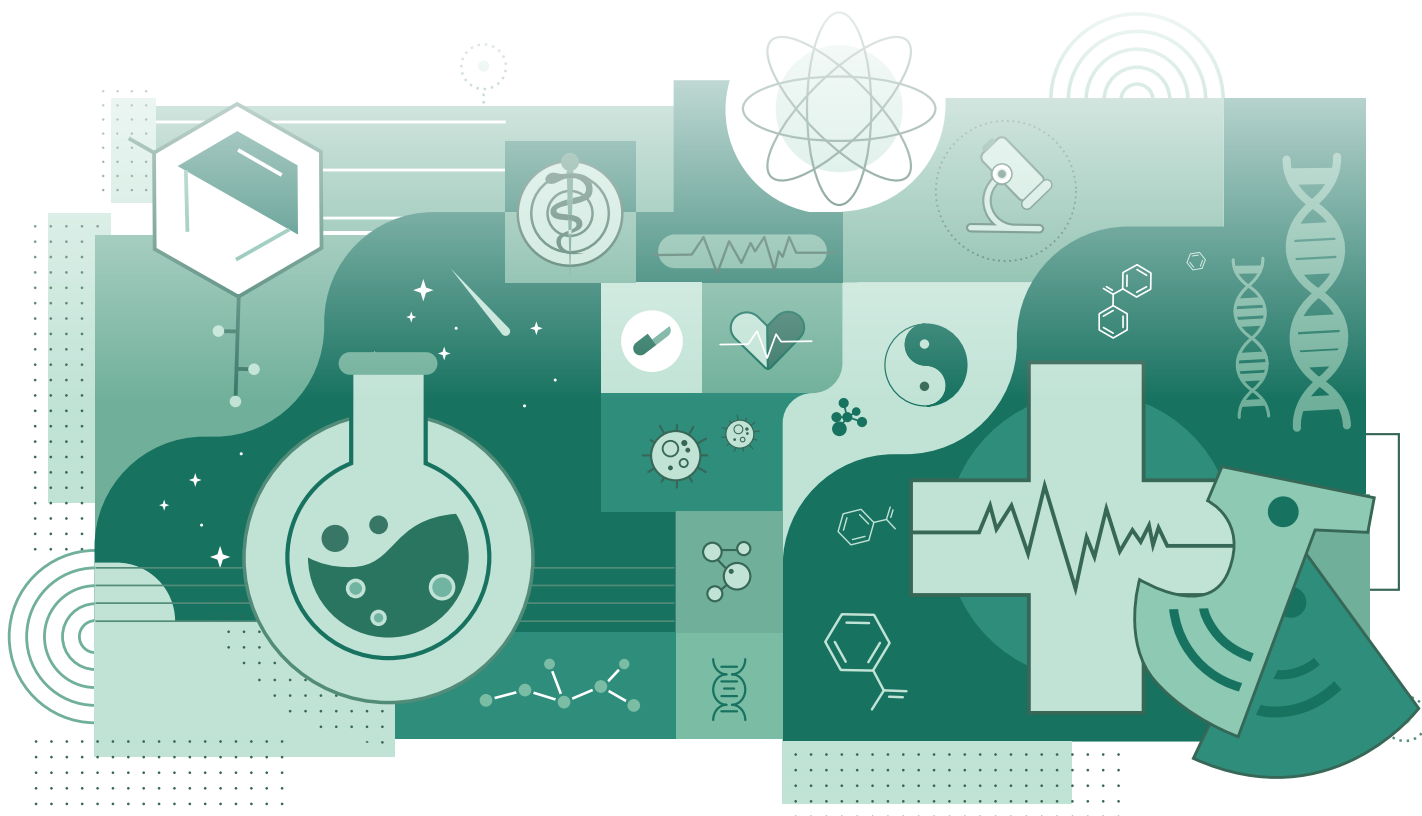
西安交通大学学报

JOURNAL OF XI'AN JIAOTONG UNIVERSITY

医学版
MEDICAL SCIENCES

2023年3月
第44卷 第2期

- 中国科学引文数据库 (CSCD) 核心期刊
- 《中文核心期刊要目总览》核心期刊
- 荷兰《文摘与引文数据库》(SCOPUS) 来源期刊
- 中国科技论文统计源核心期刊
- 中国高校百佳科技期刊
- “三秦卓越科技期刊”梯队期刊



西安交通大学学报(医学版)

Xi'an Jiaotong Daxue Xuebao (Yixueban)

第 44 卷 第 2 期 2023 年 3 月 (总第 241 期)

专家述评

电离辐射调控细胞命运在放射性肺损伤中的作用及治疗进展…………… 顾永清, 敖兴坤, 朱娇娇(153)

青少年身心健康专题研究

研究生新生心理应激、应激感受与心理健康的关系…………… 姚斌, 薛周利, 李红燕, 闫琼, 吴梦瑶(164)

青少年离家出走行为与家庭弹性的相关关系……………

…………… 王珣, 侯怡菁, 李雅静, 王璇, 孙昕霏, 葛蒲, 吴一波, 王明旭(171)

大学生新冠肺炎疫情风险感知和焦虑抑郁的关系研究——基于有调节的中介模型……………

…………… 侯怡菁, 李雅静, 王珣, 惠沼沼, 王璇, 朱海璐, 马梅, 张振香, 王明旭(177)

大学生非特异性改变成因分析——非特异性下腰痛的危险因素调查研究…………… 王辉, 杨浩杰(185)

基础研究

骨髓间充质干细胞外泌体 miR-126-3p 靶向 CCR1 抑制非小细胞肺癌细胞恶性增殖及转移……………

…………… 杜坤, 汪兵, 杨盛荣, 罗于杰, 李云鹤, 冉旭, 朱冰(189)

短期使用达格列净加重 CCl₄ 诱导的急性肝损伤……………

…………… 韩拓, 李盈, 王丽霞, 徐阳, 姬婧, 王怡雯, 李成, 张春艳, 张岩, 李永勤, 王聪霞(195)

葛根素降低细胞内 Ca²⁺ 浓度并上调 BDNF 保护血管性痴呆大鼠海马神经细胞……………

…………… 任宏伟, 陈明, 王虎清, 高震, 吴海琴(202)

慢性应激小鼠脑内 STING-TBK1-IRF3 通路相关蛋白的表达及意义……………

…………… 孙健屿, 王粤, 王强, 翟茜(208)

脑卒中后认知障碍预测模型的构建与验证…………… 黄莉, 区腾飞, 杨洁, 庄红花, 刘天妮, 杨华才(214)

颅脑损伤后 HMGB1-RAGE 介导血管周细胞脱离血管和血脑屏障损伤的机制研究……………

…………… 杜明皓, 李嘉妮, 李阳, 罗娟, 树海峰(221)

N-乙酰半胱氨酸对牙周炎伴阿尔兹海默病小鼠脑部炎症的抑制作用……………

…………… 钟梁秋月, 苗棣, 张怡凡, 陈姿伶, 陈悦(229)

临床研究

肝移植术后急性移植物抗宿主病 5 例诊治体会…………… 王文静, 王博, 刘昌, 郭波(236)

卡铂 AUC 剂量对中国人群上皮性卵巢癌患者疗效和安全性的影响……………

…………… 景卫, 汪蕾, 韩露, 李敏, 周雪, 郭苗, 李奇灵(243)

GRACE 评分对实施 PCI 的 STEMI 患者冠脉无复流和 MACE 事件的预测价值	万招飞,张苏梅,樊艳,刘小军,王新宏,薛嘉宏,郑强荪(251)
肌萎缩侧索硬化症患者巴氏征的影响因素分析	康丽,秦星,靳娇婷,胡芳芳,刘潇,贾蕊,张荣华,周青青,党静霞(257)
白内障超声乳化术源性散光影响因素分析	黄瑶瑶,胡宝琪,王欣,龙潭,马挺,王睿(263)
光学相干断层血管造影成像应用于非增殖期糖尿病视网膜病变微血管的临床筛查	唐森,李淑婷(271)
CT 肺动脉造影的多参数测量联合心动超声对肺动脉高压程度的预测价值	董宁利,杨宏刚,黑欢欢,郭佑民,段小艺,沈聪(275)
基于 Cox 回归分析的儿童过敏性紫癜复发危险因素研究	朱凯莉,黄燕萍,刘丽,王宁,王锦(283)

公共卫生研究

陕西省本土新型冠状病毒肺炎病例隔离至确诊间隔时间的影响因素分析	雷方良,王建华,武晓璞,张莉莉,李娟娥,姚筱,李连香(288)
养老机构老人新冠疫苗接种状况及影响因素分析	惠沼沼,王珣,潘云瑾,赵金萍,刘峰,王雪莉,王明旭(294)
2021 年西藏阿里地区居民慢性病患现状及其影响因素分析	南琳,邹远妩,史二丽,曾令霞(300)

技术方法研究

免疫荧光法检测融合蛋白 PTD4-Cu,Zn-SOD 在人星形胶质细胞中穿膜能力及保护作用	孟丽华,薛荣亮,雷晓鸣,镇路明,魏兰瓔(309)
基于 Citespace 胃肠道菌群与骨代谢相关文献研究的可视化分析	赵张凯,董万涛,王剑虹,常茹梦,张杰,杨攀(315)

专家综述

医学考古学视野的丝绸之路香药交流之考察	曾丽,祁翔,赵丛苍(323)
---------------------------	----------------

执行编辑 卓选鹏 审 读 卓选鹏 英文审校 范晓晖 封面设计 薛卫真 陈丽如

JOURNAL OF XI'AN JIAOTONG UNIVERSITY (MEDICAL SCIENCES)

Vol. 44 No. 2 Mar. 2023 Gen. No. 241

Specialists' Review

Role of cell fate regulation by ionizing radiation in radiation-induced lung injury and its therapeutic progress
..... *GU Yongqing, Ao Xingkun, ZHU Jiaojiao* (153)

Research on Adolescents Physical and Mental Health

Relationship of graduate students' psychological stress and perceived stress with their mental health
..... *YAO Bin, XUE Zhouli, LI Hongyan, YAN Qiong, WU Mengyao* (164)

Relationship between adolescent runaway behavior and family health
WANG Xun, HOU Yijing, LI Yajing, WANG Xuan, SUN Xinying, GE Pu, WU Yibo, WANG Mingxu (171)

Relationship of college students' risk perception of COVID-19 and their anxiety and depression: A moderated mediation model *HOU Yijing, LI Yajing, WANG Xun, HUI Zhaozhao, WANG Xuan, ZHU Hailu, MA Mei, ZHANG Zhenxiang, WANG Mingxu* (177)

Causes of nonspecific changes in college students: Investigation and research on risk factors for nonspecific low back pain *WANG Hui, YANG Haojie* (185)

Laboratory Investigation

Bone marrow mesenchymal stem cells exosome miR-126-3p targets CCR1 to inhibit the malignant proliferation and metastasis of non-small cell lung cancer cells
..... *DU Kun, WANG Bing, YANG Shengrong, LUO Yujie, LI Yunhe, RAN Xu, ZHU Bing* (189)

Short-term medication of dapagliflozin exacerbates CCl₄ induced acute liver injury
..... *HAN Tuo, LI Ying, WANG Lixia, XU Yang, JI Jing, WANG Yiwen, LI Cheng, ZHANG Chunyan, ZHANG Yan, LI Yongqin, WANG Congxia* (195)

Puerarin reduces intracellular Ca²⁺ concentration and upregulates BDNF to protect hippocampal neurons in vascular dementia rats
..... *REN Hongwei, CHEN Ming, WANG Huqing, GAO Zhen, WU Haiqin* (202)

Expression and role of STING-TBK1-IRF3 signaling pathway in the brain of mice with chronic stress
..... *SUN Jianyu, WANG Yue, WANG Qiang, ZHAI Qian* (208)

Development and validation of predictive model for cognitive impairment after stroke	
.....	<i>HUANG Li, OU Tengfei, YANG Jie, ZHUANG Honghua, LIU Tianni, YANG Huacai</i> (214)
The mechanism of the receptors for advanced glycation end products affecting pericyte detachment from blood vessels after traumatic brain injury	
.....	<i>DU Minghao, LI Jiani, LI Yang, LUO Juan, SHU Haifeng</i> (221)
Inhibitory effects of N-acetyl-L-cysteine on brain inflammation in mice with periodontitis and Alzheimer's disease	<i>ZHONG Liangqiuyue, MIAO Di, ZHANG Yifan, CHEN Ziling, CHEN Yue</i> (229)

Clinical Investigation

Experience in diagnosis and treatment of acute graft-versus-host disease after liver transplantation of five cases	<i>WANG Wenjing, WANG Bo, LIU Chang, GUO Bo</i> (236)
Effect of the area under the curve of carboplatin dosage on therapeutic efficacy and safety in Chinese patients with epithelial ovarian cancer	
.....	<i>JING Wei, WANG Lei, HAN Lu, LI Min, ZHOU Xue, GUO Miao, LI Qiling</i> (243)
The GRACE risk score predicts no-reflow and MACE in patients with STEMI undergoing PCI	
.....	<i>WAN Zhaofei, ZHANG Sumei, FAN Yan, LIU Xiaojun, WANG Xinhong, XUE Jiahong, ZHENG Qiangsun</i> (251)
Factors affecting Babinski sign in amyotrophic lateral sclerosis	<i>KANG Li, QIN Xing, JIN Jiaoting, HU Fangfang, LIU Xiao, JIA Rui, ZHANG Ronghua, ZHOU Qingqing, DANG Jingxia</i> (257)
The influencing factors of surgically induced astigmatism in phacoemulsification	
.....	<i>HUANG Yaoyao, HU Baoqi, WANG Xin, LONG Tan, MA Ting, WANG Rui</i> (263)
Application of OCTA in screening microvascular changes in non-proliferative diabetic retinopathy	
.....	<i>TANG Miao, LI Shuting</i> (271)
The predictive value of CT pulmonary angiography combined with echocardiography for the degree of pulmonary hypertension	
.....	<i>DONG Ningli, YANG Honggang, HEI Huanhuan, GUO Youmin, DUAN Xiaoyi, SHEN Cong</i> (275)
Study on risk factors of recurrent Henoch-Schonlein purpura recurrence in children based on Cox regression analysis	<i>ZHU Kaili, HUANG Yanping, LIU li, WANG Ning, WANG Jin</i> (283)

Public Health Investigation

Factors influencing the interval from isolation to diagnosis of local COVID-19 in Shaanxi Province	
.....	<i>LEI Fangliang, WANG Jianhua, WU Xiaoying, ZHANG Lili, LI Juan'e, YAO Xiao, LI Lianxiang</i> (288)

Investigation of COVID-19 vaccination among elderly adults in long-term care facilities and analysis of influencing factors
HUI Zhaozhao, WANG Xun, PAN Yunjin, ZHAO Jinping, LIU Feng, WANG Xueli, WANG Mingxu (294)

The prevalence of chronic diseases and associated influencing factors among residents in Ali, Tibet in 2021
NAN Lin, ZOU Yuanwu, SHI Erli, ZENG Lingxia (300)

Techniques and Methods

Penetration ability and biological activity of fusion protein PTD4-Cu, Zn-SOD in human astrocytes *in vitro* by immunofluorescence test
 *MENG Lihua, XUE Rongliang, LEI Xiaoming, ZHEN Luming, WEI Lanying* (309)

Visual analysis of literature on intestinal flora and bone metabolism by Citespace
ZHAO Zhangkai, DONG Wantao, WANG Jianhong, CHANG Rumeng, ZHANG Jie, YANG Pan (315)

Review

Investigation on the exchange of incense and medicine along the Silk Road from the perspective of medical archaeology
ZENG Li, QI Xiang, ZHAO Congcang (323)