



ISSN 1671-8259

CN 61-1399/R

西安交通大学学报

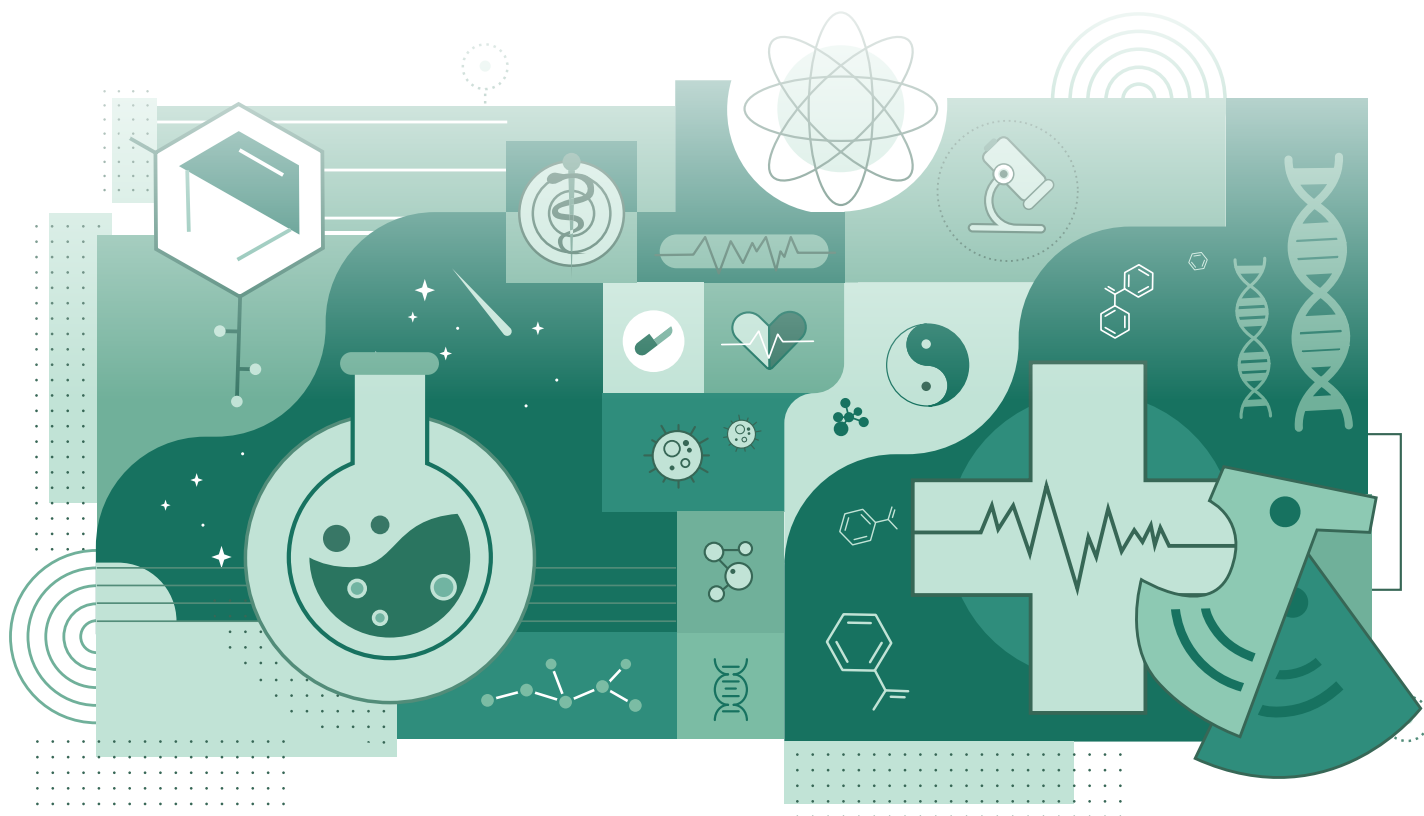
JOURNAL OF XI'AN JIAOTONG UNIVERSITY

医学版
MEDICAL SCIENCES

2023年7月
第44卷 第4期

- 中国科学引文数据库 (CSCD) 核心期刊
- 《中文核心期刊要目总览》核心期刊
- 荷兰《文摘与引文数据库》(SCOPUS) 来源期刊

- 中国科技论文统计源核心期刊
- 中国高校百佳科技期刊
- “三秦卓越科技期刊”梯队期刊



西安交通大学学报(医学版)

Xi'an Jiaotong Daxue Xuebao (Yixueban)

第 44 卷 第 4 期 2023 年 7 月 (总第 243 期)

基础研究

- 磁吻合技术在大鼠全胃切除术后食管小肠吻合中的应用研究..... 陈 环,单丽宇,吕 毅(493)
- miR-148a-3p 通过抑制钙网蛋白表达改善高糖诱导的心肌细胞线粒体损伤与凋亡 苟棋玲,赵宏谋,酉鹏华,刁佳宇(499)
- 毛状分裂增强子 1 诱导肝干细胞向胆管细胞的分化..... 张竞文,于 兵,徐 方,李亚宁,胡以平(505)
- 膜联蛋白 A2 质粒的构建及其在膀胱癌 pumc-91 细胞增殖和迁移中的作用 孟 倩,张 曼(511)
- TRPC 促进肾小球系膜细胞外基质沉积的机制研究 魏琳婷,葛蓬勃,李 柯,李 艳,王引红,赵纬昊,崔晨凯,董 静,高 洁,王 莉,付荣国(518)
- 巨噬细胞诱导型 C 型凝集素参与尿毒症微炎症状态及机制 孙凌霄,魏 萌,梁珊珊,史珂慧,蒋红利(525)
- DENV-2 感染 HUVECs 的基因表达谱分析及 ceRNA 调控网络的构建 姬进忠,陈铭懿,胡 盼,程 瑶,王远迎,孙见飞,吴 宁,左 丽(532)
- 丰富环境通过上调海马 LASP1 改善父系应激致子代小鼠焦虑抑郁样行为 王雪琴,王来法,张 辉,邓 玲,崔艳慧(542)
- 选择性神经损伤模型所致神经病理性疼痛对小鼠肠道菌群多样性的影响 王 辉,曹永孝,聂会勇,李 爽,卜 岗(549)

临床研究

- 放射治疗在小细胞肺癌卵巢转移中的应用价值 ... 封赵德,曲以平,孙玄子,任 娟,张晓智,杨蕴一(557)
- 鞍底硬膜缝合及骨性重建与带蒂鼻中隔黏膜瓣技术在颅底重建中的作用及多因素分析 曹明川,李瑞春,杨 刚,霍 钢,周 靖,张 磊,王 鹏,王晓澍(563)
- 肝硬化合并肾病综合征患者使用人血白蛋白的安全性及有效性 赵 倩,任牡丹,卢桂芳,殷 燕,和水祥,赵 艳(571)
- 营养风险指数、全身免疫炎症指数和三酰甘油葡萄糖指数预测急性胰腺炎患者病情及预后的价值..... 许海梅,郭春宣,李永超,刘海珊,廖雪霞(577)
- FAC 联合 Bu 改良预处理方案对重型再生障碍性贫血患者移植疗效的影响 高晓鹏,任 娟,王晓宁(583)
- 母体用药及母体细胞色素 P450 遗传多态性与新生儿罹患先天性心脏病的相关性分析 吴小妹,李 慧,王 丽,胡春霞(588)

奇神经节射频热凝和脉冲射频治疗原发性会阴痛的效果评价 王 辉,张丹丹,聂会勇,王 欢,卜 岗(595)

公共卫生研究

基于 CatBoost 模型与 SHAP 分析研究地理环境因子对健康人血尿酸参考值的影响 梁向荣,葛 森,王聪霞,何进伟(601)

青少年环境敏感性的测量:高敏感儿童量表中文版修订及初步应用..... 董 倩,董莹莹,王 崑,马现仓(608)

养老机构封闭管理期间老人慢性病共病对家属身心健康的影响——多重中介模型分析 朱海璐,傅佳璇,杜育青,候怡菁,李雅静,刘 峰,于 勇,王建宏,惠沼沼,王明旭(614)

后疫情时代大学生社会支持与志愿动机的关系研究 谢家华,范亚慧,惠沼沼,姚冰洋,姜茂敏,王明旭(621)

中医药研究

川芎提取物通过 miR-23a-3p/SNCA 轴对帕金森综合征模型 MPP⁺ 诱导的 SH-SY5Y 细胞的影响 谢平安,廖 辉,张艳敏,杜从斌,陈慧丰(626)

丹参酮 II A 对癫痫慢性期小鼠齿状回颗粒细胞病理整合的影响 肖新莉,秦梓通,任凯翔,郑怡秋,彭 浩,强琪琦,张楚彤,杨卓远,雷 琦,刘建新(634)

专家综述

ACSL1 促进肝脏脂质积累与炎症发生并参与疾病发展的研究进展 肖可瑞,雷晨怡,熊钟珉,李冬民(644)

IL-18 在过敏性气道疾病中的作用研究进展 王君灵,何韶衡(654)

执行编辑 张 敏 审 读 卓选鹏 英文审校 范晓晖 封面设计 薛卫真 陈丽如

期刊基本参数:CN 61-1399/R * 1937 * b * A4 * 167 * zh * P * ¥45.00 * 1200 * 24 * 2023-07

JOURNAL OF XI'AN JIAOTONG UNIVERSITY

(MEDICAL SCIENCES)

Vol.44 No.4 Jul. 2023 Gen. No.243

Laboratory Investigation

- Magnetic compression anastomosis for esophagoenterostomy after total gastrectomy in rats
..... *CHEN Huan, SHAN Liyu, LÜ Yi* (493)
- miR-148a-3p improves mitochondrial injury and apoptosis induced by high-glucose through inhibiting CRT
expression *GOU Qiling, ZHAO Hongmou, YOU Penghua, DIAO Jiayu* (499)
- Increased Hes1 expression to regulate differentiation of liver epithelial progenitor cells into cholangiocytes
..... *ZHANG Jingwen, YU Bing, XU Fang, LI Yanning, HU Yiping* (505)
- Construction of annexin A2 plasmid and its role in the proliferation and migration of bladder cancer pumc-91
cells *MENG Qian, ZHANG Man* (511)
- Mechanism of TRPC in promoting extracellular matrix deposition of glomerular mesangial cells
..... *WEI Linting, GE Pengbo, LI Ke, LI Yan,
WANG Yinhong, ZHAO Weihao, CUI Chenkai, DONG Jing, GAO Jie, WANG Li, FU Rongguo* (518)
- The mechanism of macrophage-inducible C-type lectin involved in uremic microinflammatory state
..... *SUN Lingshuang, WEI Meng, LIANG Shanshan, SHI Kehui, JIANG Hongli* (525)
- Analysis of gene expression profile and construction of ceRNA regulatory network after DENV-2 infection
with HUVECs *JI Jinzhong,
CHEN Mingxie, HU Pan, CHENG Yao, WANG Yuanying, SUN Jianfei, WU Ning, ZUO Li* (532)
- Environmental enrichment ameliorates anxiety and depression-like behaviors in paternally stressed offspring
mice through upregulation of hippocampal LASP1
..... *WANG Xueqin, WANG Laifa, ZHANG Hui, DENG Ling, CUI Yanhui* (542)
- Effects of neuropathic pain induced by selective nerve injury model on intestinal microflora diversity in mice
..... *WANG Hui, CAO Yongxiao, NIE Huiyong, LI Shuang, BU Gang* (549)

Clinical Investigation

Perspective of radiotherapy for ovarian metastasis from small cell lung cancer
 *FENG Zhaode, QU Yiping, SUN Xuanzi, REN Juan, ZHANG Xiaozhi, YANG Yunyi* (557)

Multi-factor analysis of sellar floor dural suture, bone reconstruction and pedicled nasoseptal flap in skull
 base reconstruction *CAO Mingchuan,*
LI Ruichun, YANG Gang, HUO Gang, ZHOU Jing, ZHANG Lei, WANG Peng, WANG Xiaoshu (563)

Effect of intravenous albumin in patients with liver cirrhosis and nephrotic syndrome
 *ZHAO Qian, REN Mudan, LU Guifang, YIN Yan, HE Shuixiang, ZHAO Yan* (571)

Predictive value of nutritional risk index, systemic immune inflammation index and triglyceride glucose
 index on the condition and prognosis of patients with acute pancreatitis
 *XU Haimei, GUO Chunxuan, LI Yongchao, LIU Haishan, LIAO Xuexia* (577)

Effects of FAC combined with Bu conditioning for SAA patients undergoing allogeneic stem cell transplantation
 *GAO Xiaopeng, REN Juan, WANG Xiaoning* (583)

Correlation of maternal drug use and cytochrome P450 genetic polymorphisms with congenital heart disease
 in offspring *WU Xiaomei, LI Hui, WANG Li, HU Chunxia* (588)

Efficacy evaluation of radiofrequency thermocoagulation and pulse radiofrequency for the ganglion impar in
 treating primary perineal pain
 *WANG Hui, ZHANG Dandan, NIE Huiyong, WANG Huan, BU Gang* (595)

Public Health Investigation

The influence of geographical environment factors on reference value of serum uric acid in healthy people
 based on CatBoost model and SHAP analysis
 *LIANG Xiangrong, GE Miao, WANG Congxia, HE Jinwei* (601)

Measurement of environmental sensitivity in adolescents: Chinese version of the Highly Sensitive Child Scale
 and its moderation role *DONG Qian, DONG Yingying, WANG Wei, MA Xiancang* (608)

The impact of chronic comorbidity in elderly people on relatives' physical and mental health during the
 nursing home confinement; A multiple mediator analysis *ZHU Hailu, FU Jiaxuan, DU Yuqing,*
HOU Yijing, LI Yajing, LIU Feng, YU Yong, WANG Jianhong, HUI Zhaozhao, WANG Mingxu (614)

Relationship between college students' social support and volunteer motivation in the post-epidemic era
 *XIE Jiahua, FAN Yahui, HUI Zhaozhao, YAO Bingyang, JIANG Maomin, WANG Mingxu* (621)

Traditional Chinese Medicine Investigation

Effects of Ligusticum Chuanxiong extract on MPP⁺-induced SH-SY5Y cells in Parkinson’s syndrome model
via miR-23a-3p/SNCA axis

..... *XIE Ping’an, LIAO Hui, ZHANG Yanmin, DU Congbin, CHEN Hui Feng* (626)

Effect of Tanshinone II A on abnormal integration of granule cells in the dentate gyrus of mice with chronic
epilepsy

..... *XIAO Xinli, QIN Zitong, REN Kaixiang, ZHENG Yiqiu, PENG Hao, QIANG Qiqi, ZHANG Chutong, YANG Zhuoyuan, LEI Qi, LIU Jianxin* (634)

Review

Advances in studies on ACSL1’s promoting hepatic lipid accumulation and inflammation and participating
in disease development

..... *XIAO Kerui, LEI Chenyi, XIONG Zhongmin, LI Dongmin* (644)

Advances in research on IL-18 in the pathogenesis of allergic airway diseases

..... *WANG Junling, HE Shaoheng* (654)



《西安交通大学学报 (医学版)》加入的数据库

中国科学引文数据库 (CSCD)

荷兰《文摘与引文数据库》(SCOPUS)

美国《剑桥科学文摘 (自然科学)》(CSA:NS)

WHO 西太平洋地区医学索引 (WPRIM)

美国《化学文摘》(CA)

美国《生物学文摘》(BA)

荷兰《医学文摘》(EMBASE)

俄罗斯《文摘杂志》(AJ)

波兰《哥白尼索引》(IC)

日本科学技术振兴机构数据库 (JST)



西安交通大学
XI'AN JIAOTONG UNIVERSITY

双月刊

1937年12月创刊

2023年7月5日出版

第44卷

第4期

主管 中华人民共和国教育部

主办 西安交通大学

主编 颜虹

编辑出版 西安交通大学学报 (医学版) 编辑部

通信地址 西安市雁塔西路76号

邮政编码 710061

联系电话 029-82655412

电子信箱 jdyxb@vip.163.com

印刷 陕西思维印务有限公司

国内发行 中国邮政集团公司陕西省报刊发行局

国外发行 中国国际图书贸易总公司

Administered by

Ministry of Education of the People's Republic of China

Sponsored by

Xi'an Jiaotong University

Editor-in-Chief

Yan Hong

Edited and Published by

Editorial Board of Journal of Xi'an Jiaotong University
(Medical Sciences)

Address

76 Yanta West Road, Xi'an 710061, China

Tel

029-82655412

E-Mail

jdyxb@vip.163.com

Printed by

Shaanxi Siwei Printing Co., Ltd.

Domestic Subscriptions

Shaanxi Distributing Bureau of Postal Newspapers and
Magazines, China Post Group

Foreign Subscriptions

China International Book Trading Corporation

邮发代号 国内 52-39
国外 BM 894

定价 45.00元/期

ISSN 1671-8259

