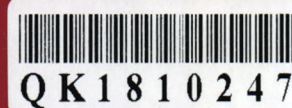
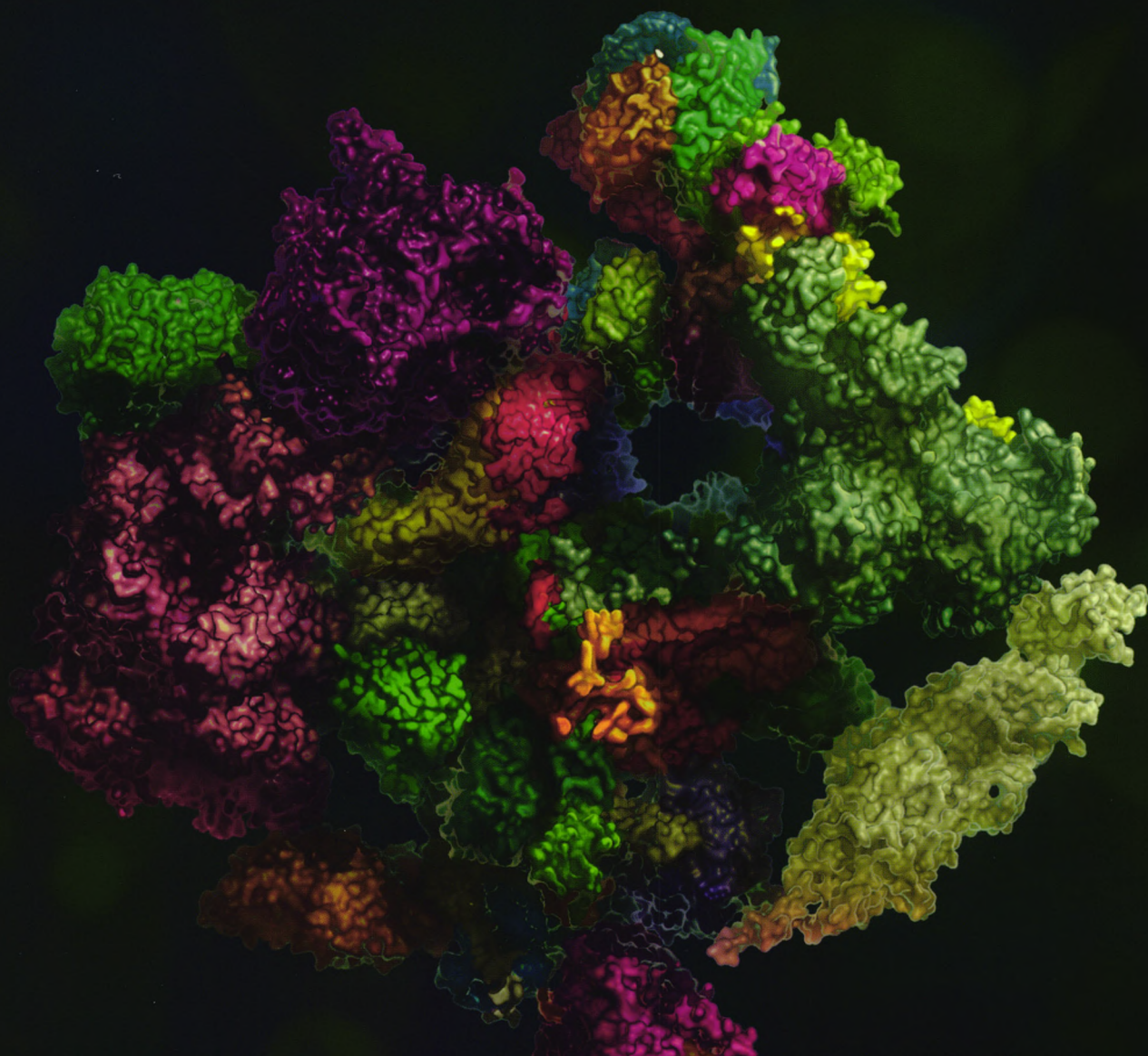


Cell Research



Volume 28 Number 3 March 2018

www.nature.com/cr
www.cell-research.com



Collection of Reviews on mitochondria: from physiology to disease
Structure of the human activated spliceosome
Eosinophil-derived CCL-6 impairs HSC homeostasis
Role of ER α 36 in hormone therapy resistance of breast cancer

(Founded in 1990)

Online submission via:

<http://www.nature.com/cr>

<http://www.cell-research.com>

Cell Research is published monthly by Nature Publishing Group (NPG) in partnership with Shanghai Institutes for Biological Sciences (SIBS), Chinese Academy of Sciences (CAS) since 2006.

Sponsored by:

Institute of Biochemistry and Cell Biology (IBCB), Shanghai Institutes for Biological Sciences, Chinese Academy of Sciences

© 2018 IBCB, SIBS, CAS



Affiliated with:

The Chinese Society for Cell Biology since August 2007



Granted by:

Publishing Foundation of Chinese Academy of Sciences, National Natural Science Foundation of China, and China Association for Science and Technology



Supported by SPFCAS

This journal is a member of, and subscribes to the principles of, the Committee on Publication Ethics (COPE) www.publicationethics.org



SPRINGER NATURE

Coordinating Editor for this issue

Jiajun Xu

万方数据

RESEARCH HIGHLIGHT

263 **Anti-PD1 in the wonder-gut-land**

Marie Vetizou, Giorgio Trinchieri

REVIEWS

265 **Mitochondrial metabolism and cancer**
Open

Paolo Ettore Porporato, Nicoletta Filigheddu, José Manuel Bravo-San Pedro, Guido Kroemer, Lorenzo Galluzzi

281 **UPR^{mt} regulation and output: a stress response mediated by mitochondrial-nuclear communication** **Open**

Andrew Melber, Cole M Haynes

296 **m-AAA proteases, mitochondrial calcium homeostasis and neurodegeneration** **Open**

Maria Patron, Hans-Georg Sprenger, Thomas Langer

ORIGINAL ARTICLES

307 **Structure of the human activated spliceosome in three conformational states** **Open**

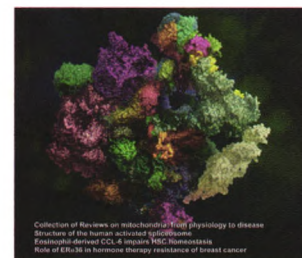
Xiaofeng Zhang, Chuangye Yan, Xiechao Zhan, Lijia Li, Jianlin Lei, Yigong Shi

323 **Eosinophil-derived CCL-6 impairs hematopoietic stem cell homeostasis** **Open**

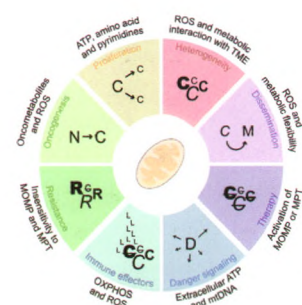
Chao Zhang, Weiwei Yi, Fei Li, Xufei Du, Hu Wang, Ping Wu, Chao Peng, Man Luo, Wen Hua, Catherine CL Wong, James J Lee, Wen Li, Zhihua Chen, Songmin Ying, Zhenyu Ju, Huahao Shen

336 **Tamoxifen enhances stemness and promotes metastasis of ERα36⁺ breast cancer by upregulating ALDH1A1 in cancer cells** **Open**

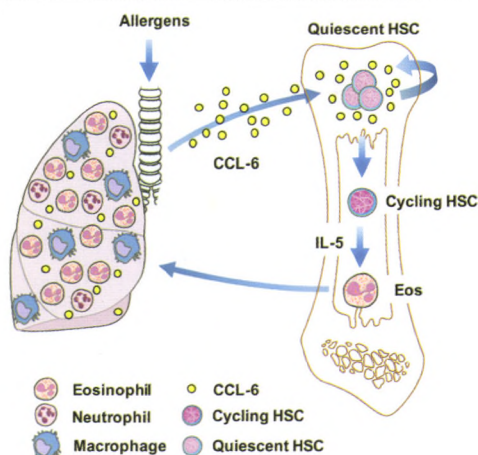
Qiang Wang, Jun Jiang, Guoguang Ying, Xiao-Qing Xie, Xia Zhang, Wei Xu, Xuemin Zhang, Erwei Song, Hong Bu, Yi-Fang Ping, Xiao-Hong Yao, Bin Wang, Shilei Xu, Ze-Xuan Yan, Yanhong Tai, Baoquan Hu, Xiaowei Qi, Yan-Xia Wang, Zhi-Cheng He, Yan Wang, Ji Ming Wang, You-Hong Cui, Feng Chen, Kun Meng, Zhaoyi Wang, Xiu-Wu Bian



Cover: Structure of the human activated spliceosome in the mature state. See page 307-322 by Xiaofeng Zhang *et al.* for details. The structure is artistically modified by Chuang Zhao (PNSO Beijing) based on the image provided by the authors.



Summary of the relationship between mitochondrial metabolism and oncogenesis. See page 265-280 by Paolo Ettore Porporato *et al.* for details.



Schematic representation of the roles of Eos and Eos-secreted CCL-6 in regulating HSC function in allergen-induced airway inflammation. See page 323-335 by Chao Zhang *et al.* for details.

359 Diverse modes of clonal evolution in HBV-related hepatocellular carcinoma revealed by single-cell genome sequencing

Meng Duan, Junfeng Hao, Sijia Cui, Daniel L Worthley, Shu Zhang, Zhichao Wang, Jiayi Shi, Longzi Liu, Xiaoying Wang, Aiwu Ke, Ya Cao, Ruibin Xi, Xiaoming Zhang, Jian Zhou, Jia Fan, Chong Li, Qiang Gao

LETTERS TO THE EDITOR

374 Molecular basis for CENP-N recognition of CENP-A nucleosome on the human kinetochore **Open**

Tian Tian, Xiaorun Li, Yingying Liu, Chengliang Wang, Xing Liu, Guoqiang Bi, Xuan Zhang, Xuebiao Yao, Z Hong Zhou, Jianye Zang

379 Generation of knock-in cynomolgus monkey via CRISPR/Cas9 editing

Xuan Yao, Zhen Liu, Xing Wang, Yan Wang, Yan-Hong Nie, Liang Lai, Ruilin Sun, Linyu Shi, Qiang Sun, Hui Yang

383 Generation of a precise *Oct4-hrGFP* knockin cynomolgus monkey model via CRISPR/Cas9-assisted homologous recombination

Yiqiang Cui, Yuyu Niu, Jiankui Zhou, Yongchang Chen, Yiwei Cheng, Shangang Li, Zongyong Ai, Chu Chu, Hong Wang, Bo Zheng, Xuejin Chen, Jiahao Sha, Xuejiang Guo, Xingxu Huang, Weizhi Ji

CORRIGENDUM

387 Histone H3 lysine 4 monomethylation modulates long-range chromatin interactions at enhancers

Jian Yan, Shi-An A Chen, Andrea Local, Tristin Liu, Yunjiang Qiu, Kristel M Dorighi, Sebastian Preissl, Chloe M Rivera, Chaochen Wang, Zhen Ye, Kai Ge, Ming Hu, Joanna Wysocka, Bing Ren

ADVANCE ONLINE PUBLICATION

22 February 2018

A reappraisal of CTLA-4 checkpoint blockade in cancer immunotherapy **Open**

Xuexiang Du, Fei Tang, Mingyue Liu, Juanjuan Su, Yan Zhang, Wei Wu, Martin Devenport, Christopher A Lazarski, Peng Zhang, Xu Wang, Peiying Ye, Changyu Wang, Eugene Hwang, Tinghui Zhu, Ting Xu, Pan Zheng, Yang Liu

doi:10.1038/s41422-018-0011-0

20 February 2018

Poly(ADP-ribose) mediates asymmetric division of mouse oocyte

Bingteng Xie, Lu Zhang, Huiling Zhao, Qingyun Bai, Yong Fan, Xiaohui Zhu, Yang Yu, Rong Li, Xin Liang, Qing-Yuan Sun, Mo Li, Jie Qiao

doi:10.1038/s41422-018-0009-7



Promega

New! 活细胞实时 蛋白相互作用检测

NanoLuc[®] Binary Technology
(NanoBiT[™]) 是一种基于 Promega 最新专利
萤光素酶 NanoLuc[®] 萤光素酶的二亚单元系统，
用来检测活细胞内蛋白质的相互作用。



扫码了解 NanoBiT 技术



欢迎关注 Promega 官方微信

普洛麦格（北京）生物技术有限公司

地址：北京市东城区北三环东路 36 号环球贸易中心 B 座 907-909

电话：010-58256268

传真：010-58256160

网址：www.promega.com

技术支持邮箱：chinatechserv@promega.com