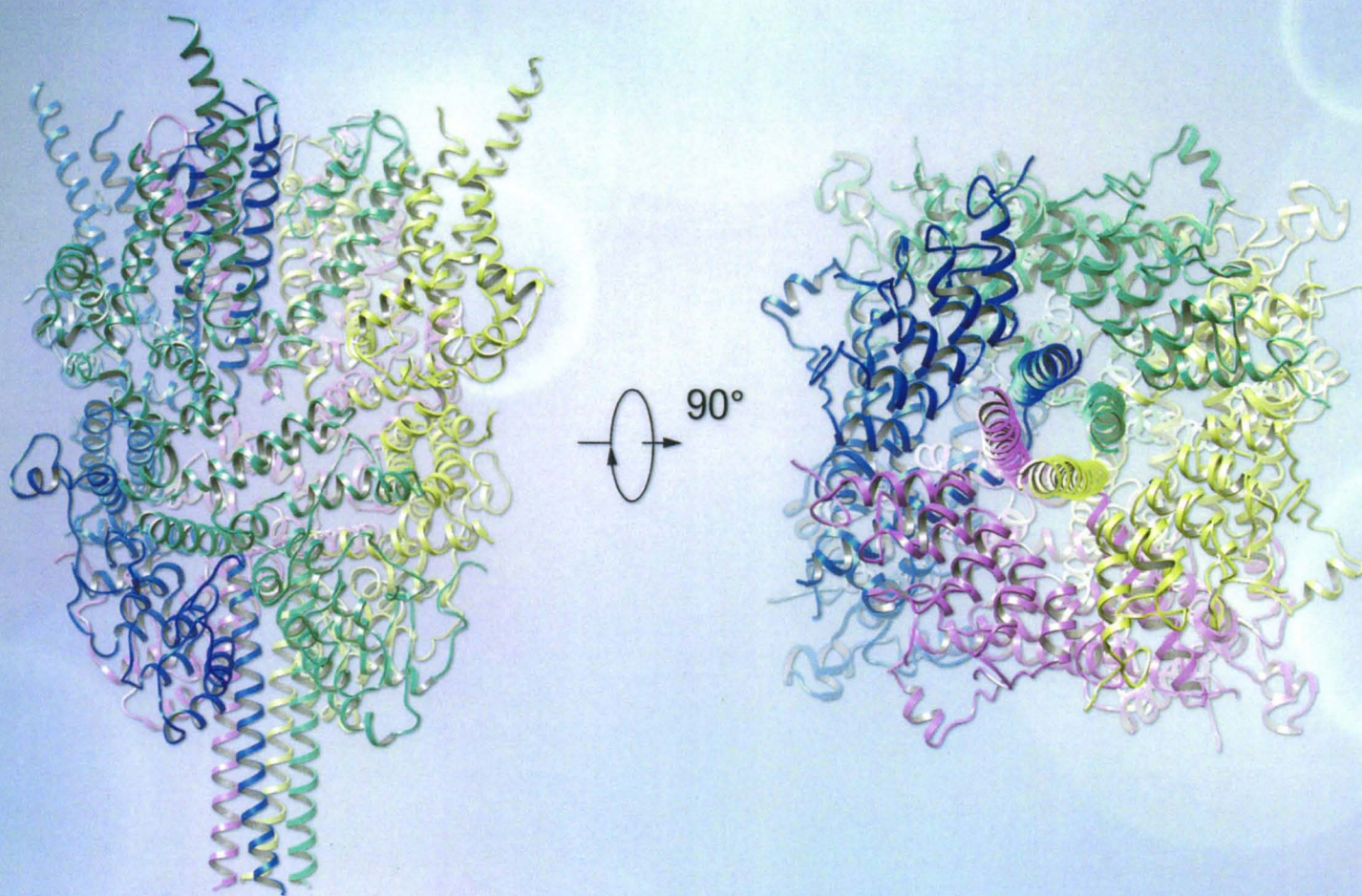


Cell Research



Volume 28 Number 7 July 2018

www.nature.com/cr
www.cell-research.com



BAD mediates $\text{TNF}\alpha$ cytotoxicity in septic shock
Mutations in *MAP3K1* & *MAP2K4* sensitize cancer to MEK inhibition
Single-cell RNA-seq analysis of human cerebral cortex development
Cryo-EM structures of TRPC6 & TRPC3

(Founded in 1990)

Online submission via:
<http://www.nature.com/cr>
<http://www.cell-research.com>

Cell Research is published monthly by Nature Publishing Group (NPG) in partnership with Shanghai Institutes for Biological Sciences (SIBS), Chinese Academy of Sciences (CAS) since 2006.

Sponsored by:

Institute of Biochemistry and Cell Biology (IBCB), Shanghai Institutes for Biological Sciences, Chinese Academy of Sciences

© 2018 IBCB, SIBS, CAS



Affiliated with:
The Chinese Society for Cell Biology
since August 2007



Granted by:

Publishing Foundation of Chinese Academy of Sciences, National Natural Science Foundation of China, and China Association for Science and Technology



Supported by SPFCAS

This journal is a member of, and subscribes to the principles of, the Committee on Publication Ethics (COPE)
www.publicationethics.org



SPRINGER NATURE

Coordinating Editor for this issue
Fangfang Hu

RESEARCH HIGHLIGHTS

697 Plant G-protein activation: connecting to plant receptor kinases
Kyle W. Bender, Cyril Zipfel

699 Ribophagy: new receptor discovered
Donna Denton, Sharad Kumar

ARTICLES

701 The BH3-only protein BAD mediates TNF α cytotoxicity despite concurrent activation of IKK and NF- κ B in septic shock *Open*
Jie Yan, Hao Zhang, Jialing Xiang, Yu Zhao, Xiang Yuan, Beicheng Sun, Anning Lin

719 MAP3K1 and MAP2K4 mutations are associated with sensitivity to MEK inhibitors in multiple cancer models *Open*
Zheng Xue, Daniel J. Vis, Alejandra Bruna, Tonci Sustic, Sake van Wageningen, Ankita Sati Batra, Oscar M. Rueda, Evert Bosdriesz, Carlos Caldas, Lodewyk F. A. Wessels, René Bernards

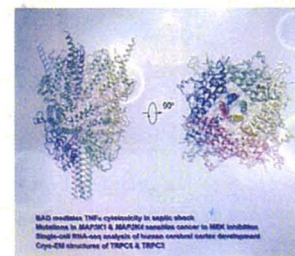
730 Spatial transcriptomic survey of human embryonic cerebral cortex by single-cell RNA-seq analysis *Open*
Xiaoying Fan, Ji Dong, Suijuan Zhong, Yuan Wei, Qian Wu, Liying Yan, Jun Yong, Le Sun, Xiaoye Wang, Yangyu Zhao, Wei Wang, Jie Yan, Xiaoqun Wang, Jie Qiao, Fuchou Tang

746 Structure of the receptor-activated human TRPC6 and TRPC3 ion channels
Qinglin Tang, Wenjun Guo, Li Zheng, Jing-Xiang Wu, Meng Liu, Xindi Zhou, Xiaolin Zhang, Lei Chen

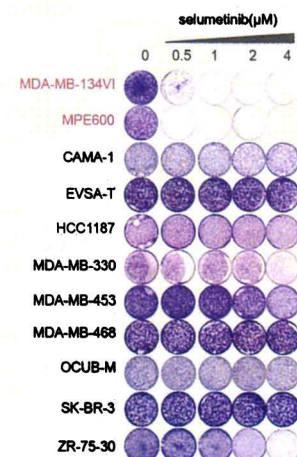
756 Destabilization of linker histone H1.2 is essential for ATM activation and DNA damage repair *Open*
Zhiming Li, Yinglu Li, Ming Tang, Bin Peng, Xiaopeng Lu, Qiaoyan Yang, Qian Zhu, Tianyun Hou, Meiting Li, Chaohua Liu, Lina Wang, Xingzhi Xu, Ying Zhao, Haiying Wang, Yang Yang, Wei-Guo Zhu

LETTERS TO THE EDITOR

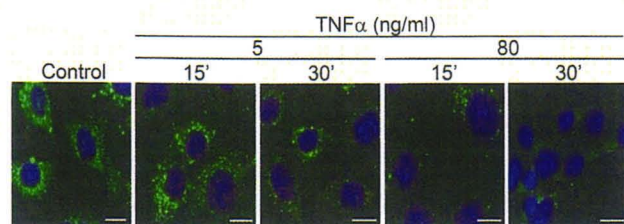
771 The genomic landscape of small cell carcinoma of the esophagus *Open*
Feng Wang, Dong-Bing Liu, Qi Zhao, Gang Chen, Xin-Ming Liu, Ying-Nan Wang, Hong Su, Yan-Ru Qin,



Cover: Side and bottom views of hTRPC6 model. See page 746-755 by Qinglin Tang *et al.* for details.



MAP2K4 mutant cell lines respond to MEK inhibition. Two MAP2K4 mutant (red) and nine wild-type (black) breast cancer cell lines were cultured in medium containing the indicated concentration of selumetinib for two weeks, fixed and stained. See page 719-729 by Zheng Xue *et al.* for details.



Cytotoxic dose TNF α significantly reduced the interaction of BAD with F-actin, as revealed by proximity ligation assay. See page 701-718 by Jie Yan *et al.* for details.

Yi-Fu He, Qing-Feng Zou, Yan-Hui Liu, You-En Lin,
Ze-Xian Liu, Jin-Xin Bei, Rui-Hua Xu

- 775** Embryonic senescent cells re-enter cell cycle and contribute to tissues after birth **Open**
Yi Li, Huan Zhao, Xiuzhen Huang, Juan Tang,

Shaohua Zhang, Yan Li, Xiuxiu Liu, Lingjuan He,
Zhengyu Ju, Kathy O. Lui, Bin Zhou

- 779** PROTAC-induced BTK degradation as a novel therapy for mutated BTK C481S induced ibrutinib-resistant B-cell malignancies
Yonghui Sun, Xingwang Zhao, Ning Ding, Hongying Gao,
Yue Wu, Yiqing Yang, Meng Zhao, Jinseok Hwang,
Yuqin Song, Wanli Liu, Yu Rao

CORRECTION

- 782** Author Correction: IMMP2L: a mitochondrial protease suppressing cellular senescence
Valentina Sica, Guido Kroemer

ADVANCE ONLINE PUBLICATION

PTEN-L is a novel protein phosphatase for ubiquitin dephosphorylation to inhibit PINK1–Parkin-mediated mitophagy **Open**

Liming Wang, Yik-Lam Cho, Yancheng Tang, Jigang Wang, Jung-Eun Park, Yajun Wu, Chunxin Wang, Yan Tong, Chawla Ritu, Jianbin Zhang, Yin Shi, Shuo Deng, Guang Lu, Yihua Wu, Hayden Weng-Siong Tan, Pornteera Pawijit, Grace Gui-Yin Lim, Hui-Ying Chan, Jingzi Zhang, Lei Fang, Hanry Yu, Yih-Cherng Liou, Mallilankaraman Karthik, Boon-Huat Bay, Kah-Leong Lim, Siu-Kwan Sze, Celestial T. Yap and Han-Ming Shen
doi:10.1038/s41422-018-0056-0

Exosomal PD-L1 harbors active defense function to suppress T cell killing of breast cancer cells and promote tumor growth

Yi Yan, Chia-Wei L, Li-Chuan Chan, Yongkun Wei, Jung-Mao Hsu, Weiya Xia, Jong-Ho Cha, Junwei Hou, Jennifer L. Hsu, Linlin Sun and Mien-Chie Hung
doi:10.1038/s41422-018-0060-4

Glutaminase GLS1 senses glutamine availability in a non-enzymatic manner triggering mitochondrial fusion

Wei-Feng Cai, Cixiong Zhang, Yu-Qing Wu, Gui Zhuang, Zhiyun Ye, Chen-Song Zhang and Sheng-Cai Lin

doi:10.1038/s41422-018-0057-z

New! 活细胞实时 蛋白相互作用检测

NanoLuc[®] Binary Technology
(NanoBiT[™]) 是一种基于 Promega 最新专利
萤光素酶 NanoLuc[®] 萤光素酶的二亚单元系统，
用来检测活细胞内蛋白质的相互作用。



扫码了解 NanoBiT 技术



欢迎关注 Promega 官方微信

万方数据

普洛麦格（北京）生物技术有限公司

地址：北京市东城区北三环东路 36 号环球贸易中心 B 座 907-909

电话：010-58256268

传真：010-58256160

网址：www.promega.com

技术支持邮箱：chinatechserv@promega.com