

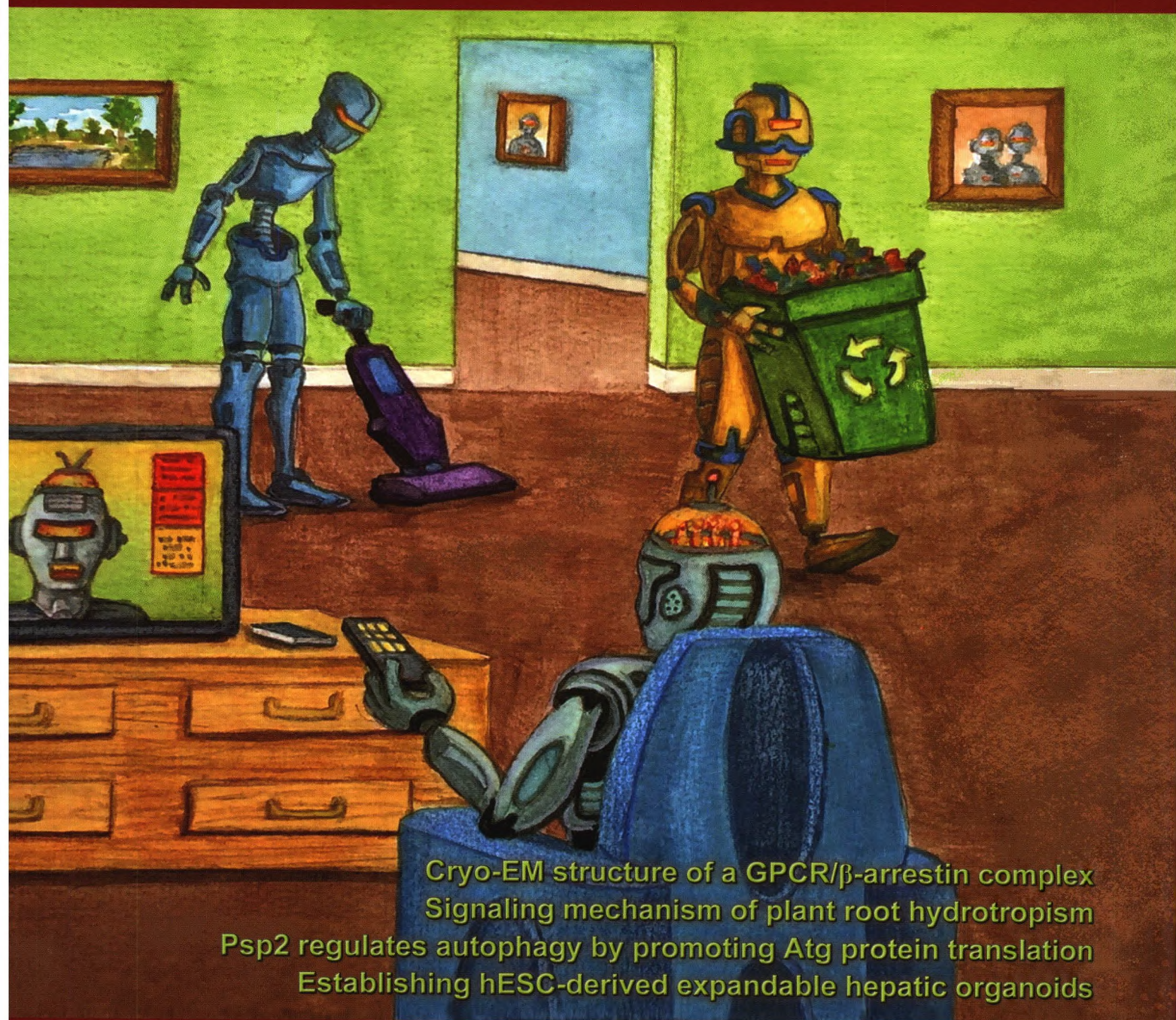
Cell Research



QK1955387

Volume 29 Number 12 December 2019

www.nature.com/cr
www.cell-research.com



Cryo-EM structure of a GPCR/ β -arrestin complex
Signaling mechanism of plant root hydrotropism
Psp2 regulates autophagy by promoting Atg protein translation
Establishing hESC-derived expandable hepatic organoids

ISSN 1001-0602



Institute of Biochemistry and Cell Biology
Shanghai Institutes for Biological Sciences
Chinese Academy of Sciences

SPRINGER NATURE

(Founded in 1990)

Online submission via:

<http://www.nature.com/cr>

<http://www.cell-research.com>

Cell Research is published monthly by Nature Publishing Group (NPG) in partnership with Shanghai Institutes for Biological Sciences (SIBS), Chinese Academy of Sciences (CAS) since 2006.

Sponsored by:

Institute of Biochemistry and Cell Biology (IBCB), Shanghai Institutes for Biological Sciences, Chinese Academy of Sciences

© 2019 IBCB, SIBS, CAS



Affiliated with:

The Chinese Society for Cell Biology since August 2007



Granted by:

Publishing Foundation of Chinese Academy of Sciences, National Natural Science Foundation of China, and China Association for Science and Technology



Supported by SPFCAS

This journal is a member of, and subscribes to the principles of, the Committee on Publication Ethics (COPE) www.publicationethics.org



SPRINGER NATURE

Coordinating Editor for this issue
Xiaolei Liu

RESEARCH HIGHLIGHTS

965 Defying gravity: a plant's quest for moisture
Scott A. Sinclair, Jiří Friml

967 BAX and BAK become killers without a BH3 trigger
Jerry M. Adams

969 DDX3X: stressing the NLRP3 inflammasome
Daniel Fox, Si Ming Man

ARTICLES

971 A complex structure of arrestin-2 bound to a G protein-coupled receptor
Wanchao Yin, Zhihai Li, Mingliang Jin, Yu-Ling Yin, Parker W. de Waal, Kuntal Pal, Yanting Yin, Xiang Gao, Yuanzheng He, Jing Gao, Xiaoxi Wang, Yan Zhang, Hu Zhou, Karsten Melcher, Yi Jiang, Yao Cong, X. Edward Zhou, Xuekui Yu, H. Eric Xu

984 Asymmetric distribution of cytokinins determines root hydrotropism in *Arabidopsis thaliana* *Open*
Jinke Chang, Xiaopeng Li, Weihao Fu, Jiawen Wang, Yueyuan Yong, Hongyong Shi, Zhaojun Ding, Hong Kui, Xiaoping Gou, Kai He, Jia Li

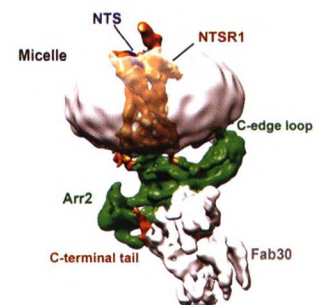
994 Psp2, a novel regulator of autophagy that promotes autophagy-related protein translation
Zhangyuan Yin, Xu Liu, Aileen Ariosa, Haina Huang, Meiyuan Jin, Katrin Karbstein, Daniel J. Klionsky

1009 Human ESC-derived expandable hepatic organoids enable therapeutic liver repopulation and pathophysiological modeling of alcoholic liver injury
Shuyong Wang, Xuan Wang, Zuolong Tan, Yuxin Su, Juan Liu, Mingyang Chang, Fang Yan, Jie Chen, Tao Chen, Chuanjiang Li, Jie Hu, Yunfang Wang

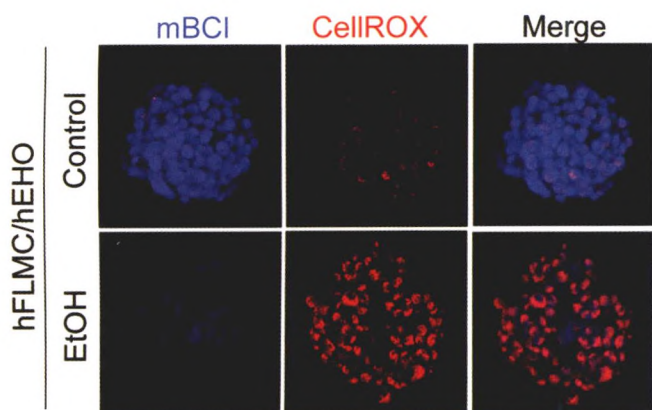
1027 Cryo-EM structure of SMG1–SMG8–SMG9 complex
Li Zhu, Liang Li, Yilun Qi, Zishuo Yu, Yanhui Xu



Cover: Autophagy is a type of cellular “housekeeping” that involves signaling, removal of debris, and recycling. Original watercolor painting by Stephen Kade based on a scientific design by Daniel J. Klionsky. See page 994-1008 by Zhangyuan Yin *et al.* for details.



Electron density map of NTSR1-Arr2-Fab30 complex structure. See page 971-983 by Wanchao Yin *et al.* for details.



hFLMC/hEHO organoid enables recapitulation of ALD-associated pathogenesis. See page 1009-1026 by Shuyong Wang *et al.* for details.

LETTERS TO THE EDITOR

1035 m⁶A promotes R-loop formation to facilitate transcription termination

Xin Yang, Qian-Lan Liu, Wei Xu, Yi-Chang Zhang, Ying Yang, Lin-Fang Ju, Jing Chen, Yu-Sheng Chen, Kuan Li, Jie Ren, Qianwen Sun, Yun-Gui Yang

1039 Cryo-EM structure of human lysosomal cobalamin exporter ABCD4

Da Xu, Zhang Feng, Wen-Tao Hou, Yong-Liang Jiang, Liang Wang, Linfeng Sun, Cong-Zhao Zhou, Yuxing Chen

1042 Cathepsin B inhibitors block multiple radiation-induced side effects in *C. elegans*

Lingjun Zheng, Xiaoqi Wu, Shanshan Li, Bin Liu, Ding Xue

INDEX

1046 Content index

ADVANCE ONLINE PUBLICATION

Dosage effect of multiple genes accounts for multisystem disorder of myotonic dystrophy type 1 **Open**

Qi Yin, Hongye Wang, Na Li, Yifu Ding, Zhenfei Xie, Lifang Jin, Yan Li, Qiong Wang, Xinyi Liu, Liuqing Xu, Qing Li, Yongjian Ma, Yanbo Cheng, Kai Wang, Cuiqing Zhong, Qian Yu, Wei Tang, Wanjin Chen, Wenjun Yang, Fan Zhang, Chen Ding, Lan Bao, Bin Zhou, Ping Hu and Jinsong Li

Hepatic spheroids derived from human induced pluripotent stem cells in bio-artificial liver rescue porcine acute liver failure **Open**

Sitong Chen, Jinglin Wang, Haozhen Ren, Yinan Liu, Chengang Xiang, Cheng Li, Shichun Lu, Yan Shi, Hongkui Deng and Xiaolei Shi

Transferrin plays a central role in coagulation balance by interacting with clotting factors **Open**

Xiaopeng Tang, Zhiye Zhang, Mingqian Fang, Yajun Han, Gan Wang, Sheng Wang, Min Xue, Yaxiong Li, Li Zhang, Jian Wu, Biqing Yang, James Mwangi, Qiumin Lu, Xiaoping Du and Ren Lai

Cell Discovery

Making publication fun for you

Cell Discovery is an open access international journal that publishes results of high significance and broad interest in all areas of molecular and cell biology. The basic bar of acceptance is comparable to prestigious society journals in the respective field of the work. It is established in 2015 as a sister journal of *Cell Research*, a high-profile international journal with a current impact of 17.848. The new impact of *Cell Discovery* is 4.600.

Authors benefit from:

- Open Access Publication – anyone can download and read your paper
- Wide exposure to a large global audience on nature.com
- Internationally renowned editors and editorial board
- Quality peer-review and fast publication
- Indexed in Scopus and PubMed Central (PMC) Science Citation Index Expanded (SciSearch®), Journal Citation Reports/Science Edition

Featured articles

Structural insights into DNA recognition by AimR of the arbitrium communication system in the SPbeta phage
Cell Discov. 2019 May 28; 5:29. doi: 10.1038/s41421-019-0101-2.

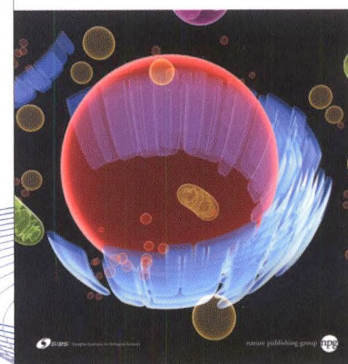
A chemical approach for global protein knockdown from mice to non-human primates
Cell Discov. 2019 Feb 5; 5:10. 10.1038/s41421-018-0079-1.

Repurposing CRISPR-Cas12b for mammalian genome engineering
Cell Discov. 2018 Nov 27; 4:63. doi: 10.1038/s41421-018-0069-3.

A novel antibody-TCR (AbTCR) platform combines Fab-based antigen recognition with gamma/delta-TCR signaling to facilitate T-cell cytotoxicity with low cytokine release
Cell Discov. 2018 Nov 20; 4:62. doi: 10.1038/s41421-018-0066-6.

ADRB2 polymorphism Arg16Gly modifies the natural outcome of heart failure and dictates therapeutic response to β -blockers in patients with heart failure
Cell Discov. 2018 Oct 23; 4:57. doi: 10.1038/s41421-018-0058-6.

Cell Discovery



Editor-in-Chief: Gang Pei
Executive Editor: Dangsheng Li

SUBMIT

Visit www.nature.com/celldisc/
to read the Published Papers and Submit Today!