

# Cell Research

Volume 31 Number 3 March 2021

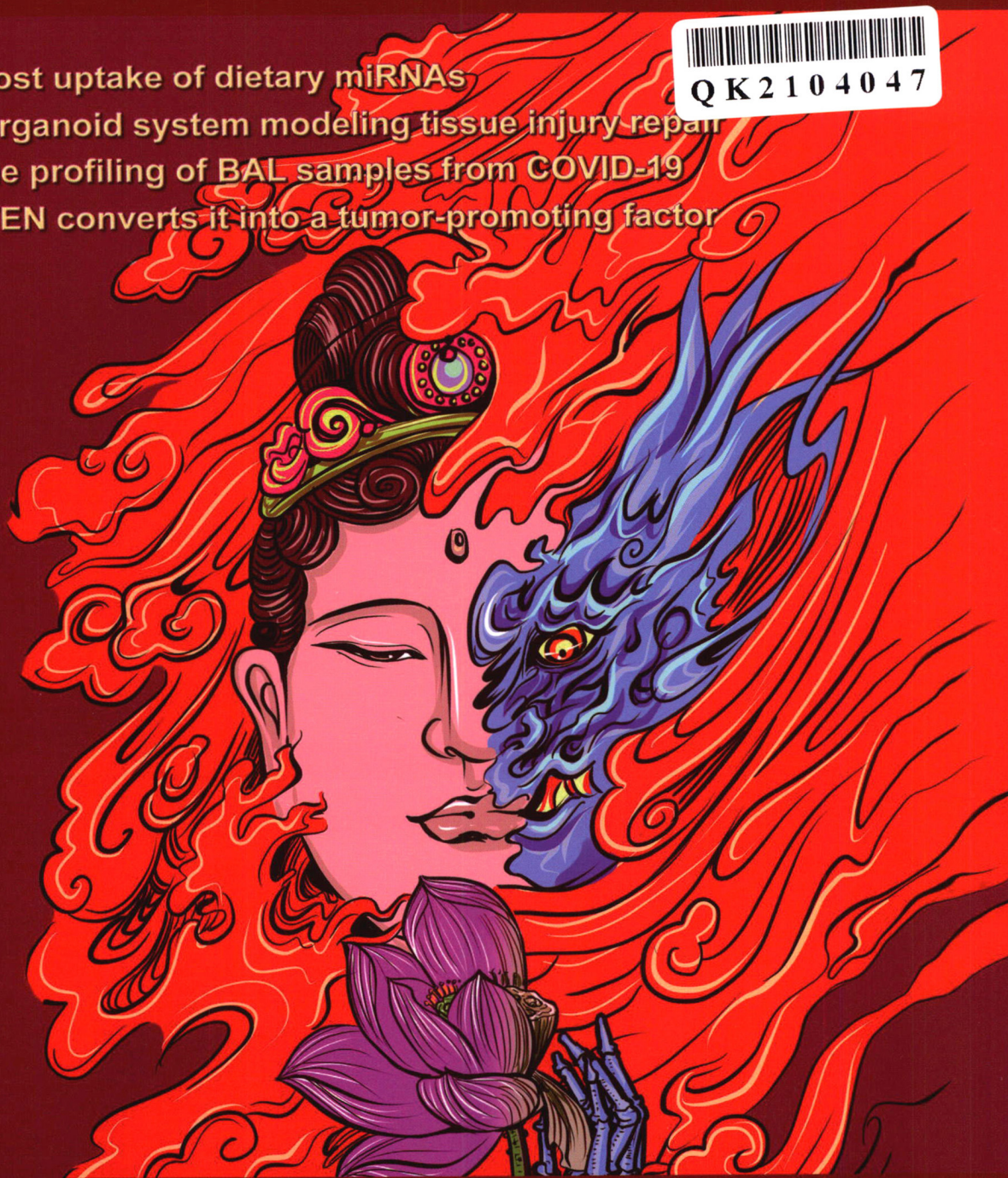
[www.nature.com/cr](http://www.nature.com/cr)  
[www.cell-research.com](http://www.cell-research.com)

**SIRT1 mediates host uptake of dietary miRNAs**

**A new intestinal organoid system modeling tissue injury repair**

**Single-cell immune profiling of BAL samples from COVID-19**

**Neddylation of PTEN converts it into a tumor-promoting factor**



ISSN 1001-0602



Center for Excellence in Molecular Cell Science  
Chinese Academy of Sciences

SPRINGER NATURE



(Founded in 1990)

Online submission via:  
<http://www.nature.com/cr>  
<http://www.cell-research.com>

Cell Research is published monthly by Nature Publishing Group (NPG) in partnership with Center for Excellence in Molecular Cell Science (CEMCS), Chinese Academy of Sciences (CAS) since 2006.

**Sponsored by:**  
Center for Excellence in Molecular Cell Science (CEMCS), CAS  
© 2021 CEMCS, CAS



**Affiliated with:**  
The Chinese Society for Cell Biology since August 2007



**Granted by:**  
Publishing Foundation of Chinese Academy of Sciences, National Natural Science Foundation of China, and China Association for Science and Technology



Supported by SPFCAS

This journal is a member of, and subscribes to the principles of, the Committee on Publication Ethics (COPE)  
[www.publicationethics.org](http://www.publicationethics.org)



SPRINGER NATURE

Coordinating Editor for this issue  
Jiajun Xu

## RESEARCH HIGHLIGHTS

### 243 Dalbavancin: novel candidate for COVID-19 treatment

Markus Hoffmann, Yeonhwa Jin, Stefan Pöhlmann

### 245 Gephyrin: a scaffold that builds a phase at the inhibitory postsynapses

Christian Hoffmann, Dragomir Milovanovic

## ARTICLES

### 247 SIDT1-dependent absorption in the stomach mediates host uptake of dietary and orally administered microRNAs **Open**

Qun Chen, Fan Zhang, Lei Dong, Huimin Wu, Jie Xu, Hanqin Li, Jin Wang, Zhen Zhou, Chunyan Liu, Yanbo Wang, Yuyan Liu, Liangsheng Lu, Chen Wang, Minghui Liu, Xi Chen, Cheng Wang, Chunni Zhang, Dangsheng Li, Ke Zen, Fangyu Wang, Qipeng Zhang, Chen-Yu Zhang

### 259 Establishment of intestinal organoid cultures modeling injury-associated epithelial regeneration **Open**

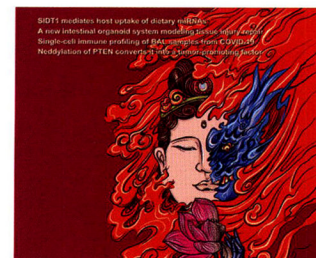
Molong Qu, Liang Xiong, Yulin Lyu, Xiannian Zhang, Jie Shen, Jingyang Guan, Peiyuan Chai, Zhongqing Lin, Boyao Nie, Cheng Li, Jun Xu, Hongkui Deng

### 272 Discriminating mild from critical COVID-19 by innate and adaptive immune single-cell profiling of bronchoalveolar lavages **Open**

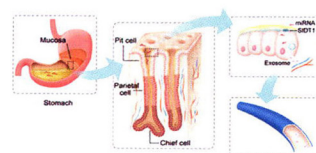
Els Wauters, Pierre Van Mol, Abhishek Dinkarnath Garg, Sander Jansen, Yannick Van Herck, Lore Vanderbeke, Ayse Bassez, Bram Boeckx, Bert Malengier-Devlies, Anna Timmerman, Thomas Van Brussel, Tina Van Buyten, Rogier Schepers, Elisabeth Heylen, Dieter Dauwe, Christophe Doods, Jan Gunst, Greet Hermans, Philippe Meersseman, Dries Testelmans, Jonas Yserbyt, Sabine Tejpar, Walter De Wever, Patrick Matthys, CONTAGIOUS collaborators, Johan Neyts, Joost Wauters, Junbin Qian, Diether Lambrechts

### 291 Neddylation of PTEN regulates its nuclear import and promotes tumor development

Ping Xie, Zhiqiang Peng, Yujiao Chen, Hongchang Li, Mengge Du, Yawen Tan, Xin Zhang, Zhe Lu, Chun-Ping Cui, Cui Hua Liu, Fuchu He, Lingqiang Zhang



**Cover:** Buddha or evil, depends on a blinding flash. Neddylation can switch PTEN from a tumor suppressor (Buddha) to a tumor promoter (evil). See page 291-311 by Ping Xie et al. for details.



A graphical model of the absorption and secretion of dietary miRNAs in the stomach. See page 247-258 by Qun Chen et al. for details.



**312 Gephyrin-mediated formation of inhibitory postsynaptic density sheet via phase separation**

Guanhua Bai, Yu Wang, Mingjie Zhang

**326 Single-cell patterning and axis characterization in the murine and human definitive endoderm**

Lin-Chen Li, Xin Wang, Zi-Ran Xu, Yan-Chun Wang, Ye Feng, Liu Yang, Wei-Lin Qiu, Li Yang, Xin-Xin Yu, Jun Gu, Cheng-Ran Xu

**345 Oncogenic AURKA-enhanced N<sup>6</sup>-methyladenosine modification increases DROSHA mRNA stability to transactivate STC1 in breast cancer stem-like cells**

Fei Peng, Jie Xu, Bai Cui, Qilan Liang, Sai Zeng, Bin He, Hong Zou, Manman Li, Huan Zhao, Yuting Meng, Jin Chen, Bing Liu, Shasha Lv, Peng Chu, Fan An, Zifeng Wang, Junxiu Huang, Yajing Zhan, Yuwei Liao, Jinxin Lu, Lingzhi Xu, Jin Zhang, Zhaolin Sun, Zhiguang Li, Fangjun Wang, Eric W.-F. Lam, Quentin Liu

## LETTERS TO THE EDITOR

**362 The oncogenomic function of androgen receptor in esophageal squamous cell carcinoma is directed by GATA3**

Furong Huang, Hongyan Chen, Xiaolin Zhu, Tongyang Gong, Xukun Li, William Hankey, Hongyan Wang, Zhong Chen, Qianben Wang, Zhihua Liu

**366 Structure of the mitochondrial TIM22 complex from yeast**

Yutong Zhang, Xiaomin Ou, Xuezheng Wang, Dongjie Sun, Xueyin Zhou, Xiaofei Wu, Qing Li, Long Li

**369 Cryo-EM structure of the human mitochondrial translocase TIM22 complex**

Liangbo Qi, Qiang Wang, Zeyuan Guan, Yan Wu, Cuicui Shen, Sixing Hong, Jianbo Cao, Xing Zhang, Chuangye Yan, Ping Yin

## CORRECTIONS

**373 Author Correction: Kinetics and mechanisms of mitotic inheritance of DNA methylation and their roles in aging-associated methylome deterioration**

Xuan Ming, Zhuqiang Zhang, Zhuoning Zou, Cong Lv, Qiang Dong, Qixiang He, Yangyang Yi, Yingfeng Li, Hailin Wang, Bing Zhu

**374 Author Correction: Neddylation of PTEN regulates its nuclear import and promotes tumor development**

Ping Xie, Zhiqiang Peng, Yujiao Chen, Hongchang Li, Mengge Du, Yawen Tan, Xin Zhang, Zhe Lu, Chun-Ping Cui, Cui Hua Liu, Fuchu He, Lingqiang Zhang

## ADVANCE ONLINE PUBLICATION

**Predicting dynamic cellular protein–RNA interactions by deep learning using in vivo RNA structures**  
**Open**

Lei Sun, Kui Xu, Wenze Huang, Yucheng T. Yang, Pan Li, Lei Tang, Tuanlin Xiong and Qiangfeng Cliff Zhang

**Structure of human RNA polymerase III elongation complex**

Liang Li, Zishuo Yu, Dan Zhao, Yulei Ren, Haifeng Hou and Yanhui Xu



# Cell Discovery

**Making publication fun for you**

*Cell Discovery* is an open access international journal that publishes results of high significance and broad interest in all areas of molecular and cell biology. The basic bar of acceptance is comparable to prestigious society journals in the respective field of the work. It is established in 2015 as a sister journal of *Cell Research*, a high-profile international journal with a current impact of 20.507. The new impact of *Cell Discovery* is 6.255.

## Authors benefit from:

- Open Access Publication – anyone can download and read your paper
- Wide exposure to a large global audience on nature.com
- Internationally renowned editors and editorial board
- Quality peer-review and fast publication
- Indexed in Scopus and PubMed Central (PMC)  
Science Citation Index Expanded (SciSearch®),  
Journal Citation Reports/Science Edition

## Featured articles

Initial whole-genome sequencing and analysis of the host genetic contribution to COVID-19 severity and susceptibility

*Cell Discov.* 2020 Nov 10;6(1):83. doi: 10.1038/s41421-020-00231-4.

The differential immune responses to COVID-19 in peripheral and lung revealed by single-cell RNA sequencing

*Cell Discov.* 2020 Oct 20;6:73. doi: 10.1038/s41421-020-00225-2.

Immune cell profiling of COVID-19 patients in the recovery stage by single-cell sequencing

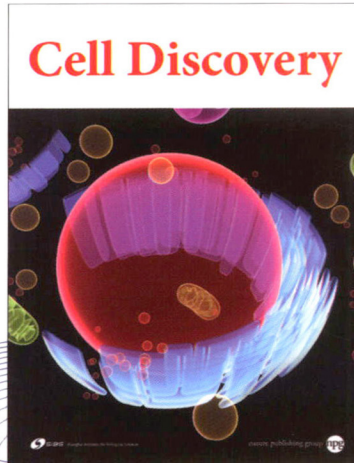
*Cell Discov.* 2020 May 4;6:31. doi: 10.1038/s41421-020-0168-9.

Phosphorylation of cGAS by CDK1 impairs self-DNA sensing in mitosis

*Cell Discov.* 2020 Apr 28;6:26. doi: 10.1038/s41421-020-0162-2.

Single-cell RNA sequencing reveals the heterogeneity of liver-resident immune cells in human

*Cell Discov.* 2020 Apr 28;6:22. doi: 10.1038/s41421-020-0157-z.



Editor-in-Chief: Dangsheng Li

# SUBMIT

Visit [www.nature.com/celldisc/](http://www.nature.com/celldisc/)  
to read the Published Papers and Submit Today!