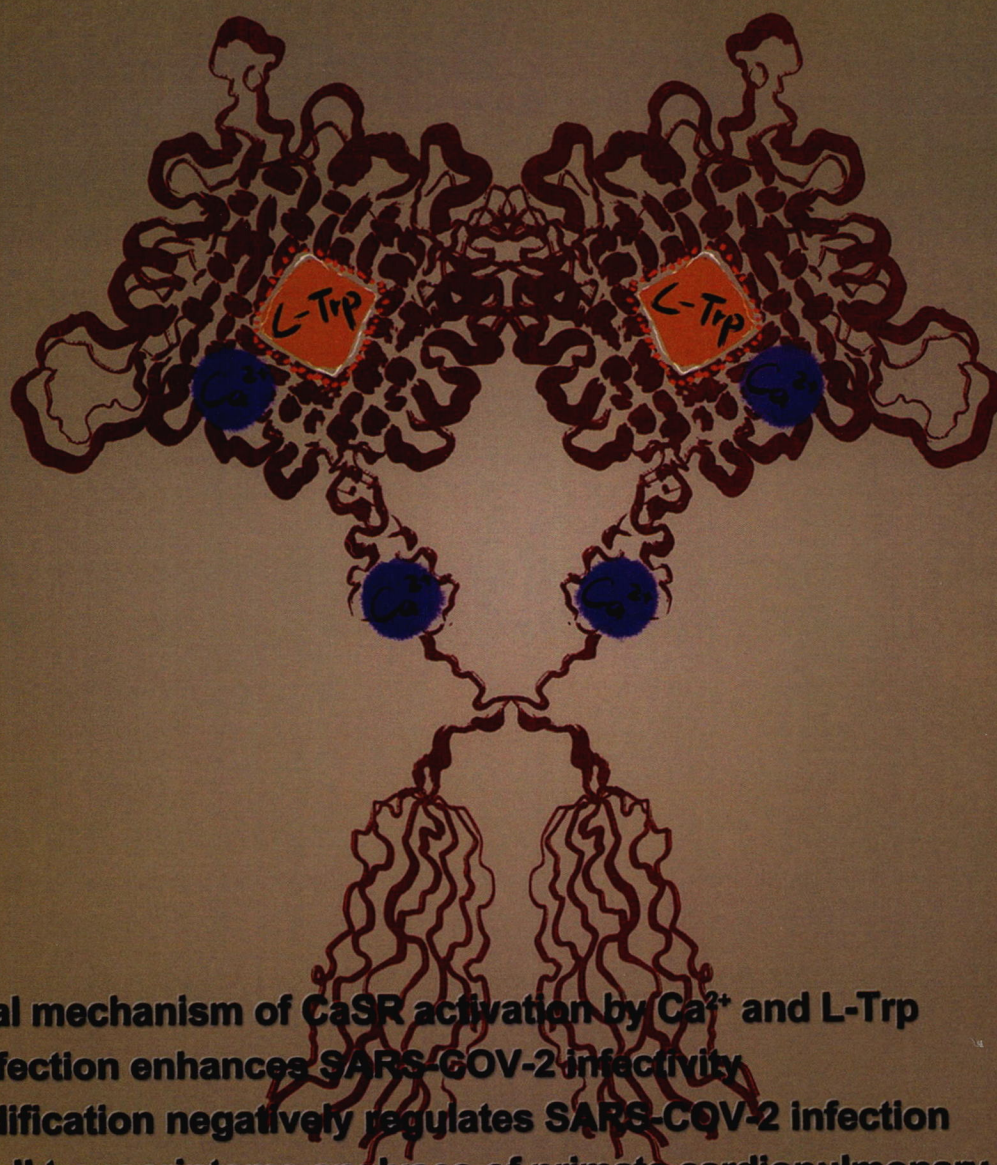


Cell Research



Volume 31 Number 4 April 2021

www.nature.com/cr
www.cell-research.com



Structural mechanism of CaSR activation by Ca^{2+} and L-Trp
IAV coinfection enhances SARS-COV-2 infectivity
m⁶A modification negatively regulates SARS-COV-2 infection
Single-cell transcriptome analyses of primate cardiopulmonary aging

ISSN 1001-0602



Center for Excellence in Molecular Cell Science
Chinese Academy of Sciences

SPRINGER NATURE

(Founded in 1990)

Online submission via:

<http://www.nature.com/cr>

<http://www.cell-research.com>

Cell Research is published monthly by Nature Publishing Group (NPG) in partnership with Center for Excellence in Molecular Cell Science (CEMCS), Chinese Academy of Sciences (CAS) since 2006.

Sponsored by:

Center for Excellence in Molecular Cell Science (CEMCS), CAS

© 2021 CEMCS, CAS



Affiliated with:

The Chinese Society for Cell Biology since August 2007



Granted by:

Publishing Foundation of Chinese Academy of Sciences, National Natural Science Foundation of China, and China Association for Science and Technology



Supported by SPFCAS

This journal is a member of, and subscribes to the principles of, the Committee on Publication Ethics (COPE) www.publicationethics.org



SPRINGER NATURE

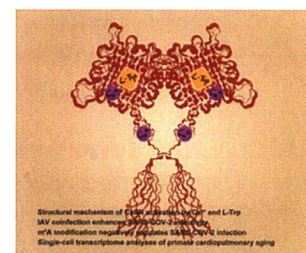
Coordinating Editor for this issue
Fangfang Hu

RESEARCH HIGHLIGHTS

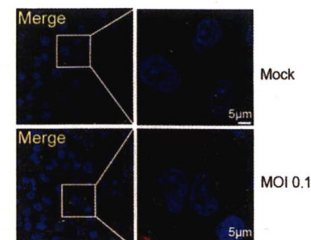
- 375 Remembering past infections: training exercise for gut microbes**
Samuel Philip Nobs, Eran Elinav
- 377 Young haematopoietic stem cells are picky eaters**
Nick van Gestel, David T. Scadden
- 379 TDP-43 triggers immune response via mitochondrial DNA release**
Sunny Kumar, Jean-Pierre Julien
- 381 Nerves on tr[ac]k to support pancreatic cancer metabolism**
Ruth A. White, Timothy C. Wang

ARTICLES

- 383 Structural mechanism of cooperative activation of the human calcium-sensing receptor by Ca^{2+} ions and L-tryptophan** *Open*
Shenglong Ling, Pan Shi, Sanling Liu, Xianyu Meng, Yingxin Zhou, Wenjing Sun, Shenghai Chang, Xing Zhang, Longhua Zhang, Chaowei Shi, Demeng Sun, Lei Liu, Changlin Tian
- 395 Coinfection with influenza A virus enhances SARS-CoV-2 infectivity**
Lei Bai, Yongliang Zhao, Jiazhen Dong, Simeng Liang, Ming Guo, Xinjin Liu, Xin Wang, Zhixiang Huang, Xiaoyi Sun, Zhen Zhang, Lianghui Dong, Qianyun Liu, Yucheng Zheng, Danping Niu, Min Xiang, Kun Song, Jiajie Ye, Wenchao Zheng, Zhidong Tang, Mingliang Tang, Yu Zhou, Chao Shen, Ming Dai, Li Zhou, Yu Chen, Huan Yan, Ke Lan, Ke Xu
- 404 The m⁶A methylome of SARS-CoV-2 in host cells** *Open*
Jun'e Liu, Yan-Peng Xu, Kai Li, Qing Ye, Hang-Yu Zhou, Hanxiao Sun, Xiaoyu Li, Liu Yu, Yong-Qiang Deng, Rui-Ting Li, Meng-Li Cheng, Bo He, Jia Zhou, Xiao-Feng Li, Aiping Wu, Chengqi Yi, Cheng-Feng Qin
- 415 Single-cell transcriptomic atlas of primate cardiopulmonary aging** *Open*
Shuai Ma, Shuhui Sun, Jiaming Li, Yanling Fan, Jing Qu, Liang Sun, Si Wang, Yiyuan Zhang, Shanshan Yang, Zumpeng Liu, Zeming Wu, Sheng Zhang, Qiaoran Wang, Aihua Zheng, Shuguang Duo, Yang Yu, Juan Carlos Izpisua Belmonte, Piu Chan, Qi Zhou, Moshi Song, Weiqi Zhang, Guang-Hui Liu



Cover: Paired Chinese knot, a symbol of unity and cooperation, represents the active state structure of human calcium-sensing receptor (CaSR), a dimeric class C GPCR responsible for maintaining Ca^{2+} homeostasis in the blood. Structural studies revealed that CaSR is cooperatively activated by calcium ions and L-Trp. See page 383-394 by Shenglong Ling et al. for details.



Intracellular ACE2 expression was triggered at 12 h post influenza A virus infection. See page 395-403 by Lei Bai et al. for details.

- 433 Ttm50 facilitates calpain activation by anchoring it to calcium stores and increasing its sensitivity to calcium**

Elsayed Metwally, Guoli Zhao, Qifu Wang, Yong Q. Zhang

- 450 LRP6 downregulation promotes cardiomyocyte proliferation and heart regeneration**

Yahan Wu, Liping Zhou, Hongyu Liu, Ran Duan, Huixing Zhou, Fulei Zhang, Xiaoyu He, Dongbo Lu, Ke Xiong, Maolin Xiong, Jinzhu Zhuang, Yi Liu, Li Li, Dandan Liang, Yi-Han Chen

- 463 Dissecting the epigenomic dynamics of human fetal germ cell development at single-cell resolution** **Open**

Li Li, Lin Li, Qingqing Li, Xixi Liu, Xinyi Ma, Jun Yong, Shuai Gao, Xinglong Wu, Yuan Wei, Xiaoye Wang, Wei Wang, Rong Li, Jie Yan, Xiaohui Zhu, Lu Wen, Jie Qiao, Liying Yan, Fuchou Tang

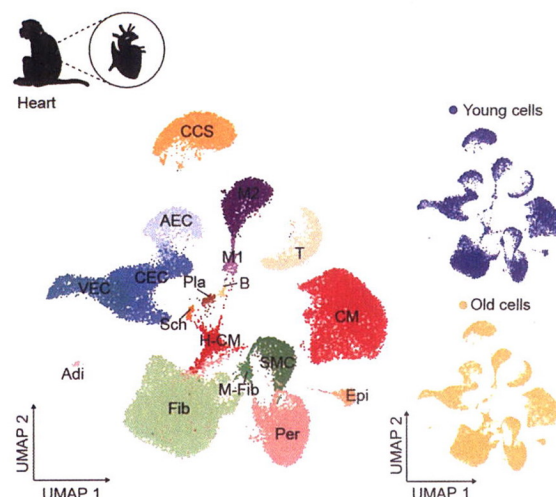
LETTERS TO THE EDITOR

- 478 Aldolase is a sensor for both low and high glucose, linking to AMPK and mTORC1** **Open**

Mengqi Li, Chen-Song Zhang, Jin-Wei Feng, Xiaoyan Wei, Cixiong Zhang, Changchuan Xie, Yaying Wu, Simon A. Hawley, Abdelmadjid Atrih, Douglas J. Lamont, Zhichao Wang, Hai-Long Piao, D. Grahame Hardie, Sheng-Cai Lin

- 482 Cryo-EM structures of the full-length human KCC2 and KCC3 cation-chloride cotransporters** **Open**

Ximin Chi, Xiaorong Li, Yun Chen, Yuanyuan Zhang, Qiang Su, Qiang Zhou



UMAP plots showing different cell types (left) and young and old cell distribution (right) in monkey heart. See page 415-432 by Shuai Ma et al. for details.

- 485 Overexpression of Kdr in adult endocardium induces endocardial neovascularization and improves heart function after myocardial infarction**

Zhen Jiang, Zhengkai Lu, Shan Kou, Teng Feng, Yuanxin Wei, Zibei Gao, Defang Deng, Jufeng Meng, Chao-Po Lin, Bin Zhou, Hui Zhang

CORRECTION

- 488 Author Correction: Threshold for neural tube defect risk by accumulated singleton loss-of-function variants**

Zhongzhong Chen, Yunping Lei, Yufang Zheng, Vanessa Aguiar-Pulido, M. Elizabeth Ross, Rui Peng, Li Jin, Ting Zhang, Richard H. Finnell, Hongyan Wang

ADVANCE ONLINE PUBLICATION

- Structure-based development of three- and four-antibody cocktails against SARS-CoV-2 via multiple mechanisms** **Open**

Yao Sun, Lei Wang, Rui Feng, Nan Wang, Yuxi Wang, Dandan Zhu, Xiaorui Xing, Peng Yang, Yanjun Zhang, Weimin Li, Xiangxi Wang

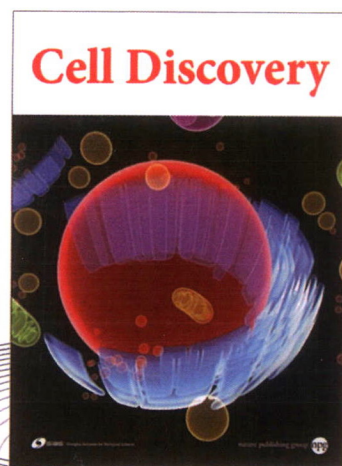
Cell Discovery

Making publication fun for you

Cell Discovery is an open access international journal that publishes results of high significance and broad interest in all areas of molecular and cell biology. The basic bar of acceptance is comparable to prestigious society journals in the respective field of the work. It is established in 2015 as a sister journal of *Cell Research*, a high-profile international journal with a current impact of 20.507. The new impact of *Cell Discovery* is 6.255.

Authors benefit from:

- Open Access Publication – anyone can download and read your paper
- Wide exposure to a large global audience on nature.com
- Internationally renowned editors and editorial board
- Quality peer-review and fast publication
- Indexed in Scopus and PubMed Central (PMC)
Science Citation Index Expanded (SciSearch®),
Journal Citation Reports/Science Edition



Editor-in-Chief: Dangsheng Li

Featured articles

Initial whole-genome sequencing and analysis of the host genetic contribution to COVID-19 severity and susceptibility

Cell Discov. 2020 Nov 10;6(1):83. doi: 10.1038/s41421-020-00231-4.

The differential immune responses to COVID-19 in peripheral and lung revealed by single-cell RNA sequencing

Cell Discov. 2020 Oct 20;6:73. doi: 10.1038/s41421-020-00225-2.

Immune cell profiling of COVID-19 patients in the recovery stage by single-cell sequencing

Cell Discov. 2020 May 4;6:31. doi: 10.1038/s41421-020-0168-9.

Phosphorylation of cGAS by CDK1 impairs self-DNA sensing in mitosis

Cell Discov. 2020 Apr 28;6:26. doi: 10.1038/s41421-020-0162-2.

Single-cell RNA sequencing reveals the heterogeneity of liver-resident immune cells in human

Cell Discov. 2020 Apr 28;6:22. doi: 10.1038/s41421-020-0157-z.

SUBMIT

Visit www.nature.com/celldisc/
to read the Published Papers and Submit Today!