

◎ 中文核心期刊

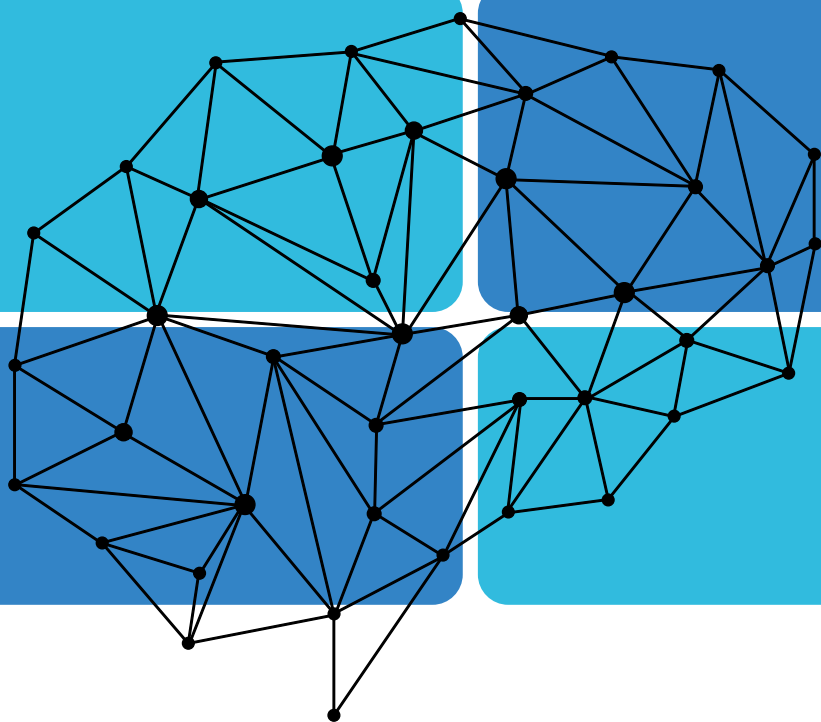
◎ 中国科技核心期刊 RCCSE中国核心学术期刊(A)

◎ 主办：陕西电子杂志社 陕西省电子技术研究所

Modern Electronics Technique

现代电子技术®

<http://www.xddz.com.cn>



ISSN 1004-373X



万方数据

2020

第43卷

Vol.43 No.04

04

目 次

电子与信息器件

- 电气设备实时敏感信息自动化监测系统设计李海瑜 (1)
- 一种应用FPGA的灰度投影法断纱检测平台设计孟立凡,高文学 (4)
- 基于汉明码及门锁检测电路的防辐射效应设计常 远,沈国红,荆 涛,路 立 (8)
- 远程血液冷链运输监测系统设计谭 洋,郭晓金,程 力 (11)
- 多通道表面肌电信号同步采样与处理研究陈 蕾,林明星,代成刚,吴筱坚 (17)
- 旋转倒立摆串级PID低通滤波控制系统的设计张小明,王坤坤,于纪言 (21)
- 基于FPGA的实时载波频率检测电路设计陈文艺,荣 幸,杨 辉 (25)
- 程控升降压DC/DC变换器设计王 玉,游志宇 (29)
- 基于FPGA和FLASH的多路数据存储技术吴嘉伟,魏志强,张会新 (34)
- 电子荧光内窥镜实时图像处理系统邱 鹏,叶 兵,马静云 (38)

计算机科学与应用

- 基于WiFi数据的实时高效定位分析系统设计韩 萍,王 浩,方 澄,牛勇钢,贾云飞 (43)
- 基于LabVIEW的智能家居多参数监控系统设计韩 剑,莫德清 (48)
- 基于密码学的网络多模态信息动态加密系统设计糜小夫 (51)
- 基于MVC模式的教学管理电子信息系统设计冉启武,皇金锋,董锋斌,蒋 军 (54)
- 探索性数据分析在LoRa通信SNR性能的研究房海峰,檀 蓉,韩院彬,赵继军 (58)
- 基于CQPSO-GRNN的ZigBee节点定位算法研究邹自明,李福敏,乔新新 (62)
- 基于颜色通道融合特征的现勘图像分类算法刘 颖,张倩楠,王富平,雷研博,公衍超,杨凡超 (67)
- 组合滤波EOH-SIFT特征和模糊推理实现的掌纹识别陶筱娇,卢 锦 (73)
- 基于旅客信任网络的航线选择行为预测冯 霞,张 晨,卢 敏 (78)
- 基于社区搜索模块排序算法的网页设计教学质量评估系统李素贞 (83)
- CDMA移动通信中话务统计软件的优化何 南,吴晓雪,谷 军 (87)
- 基于数字媒体DSP的远程网络视频监控系统设计刘勃宏 (90)
- 基于数据挖掘的计算机辅助课堂教学系统设计陈 刚,李英玉,吕 鑫 (94)
- 基于多元混合准则模糊算法的高校教育信息推荐系统设计李麟霞 (97)

激光与红外技术

- 宽频带地震仪数据采集及压缩传输的研究王巨龙,张怀柱,玄金鹏 (100)

- 增益平坦型掺铒光纤放大器研究 由旭家, 田小建 (104)
- 接触器红外热成像故障预测实验分析 王 军, 李 伟, 俞 跃, 周继雯, 叶 超 (108)
- 扫描式激光测径仪中电机转速波动对精度的影响及误差修正研究 段长超, 彭 松, 谭 骏, 方 辉 (112)

前沿交叉科学

- 基于视觉传达的多角色虚拟人物三维融合系统设计 梁志慧, 郑文锋 (117)
- 基于三维视觉的工业产品设计展示平台设计 苗维平 (120)
- 基于因子分析和神经网络信息风险评估系统设计 李晓婷, 包景岭, 孙建广, 汪 冀 (123)
- 基于改进支持向量机的运动视频内容分类算法研究 许淑贤 (127)
- 基于三维虚拟景观的建模和虚拟设计 康琳英, 朱文耀 (130)
- 基于数字虚拟技术的环境艺术设计研究 陈增辉 (134)
- 基于双流独立循环神经网络的人体动作识别 葛鹏花, 智 敏, 于 华, 郝 岩 (137)
- 基于模糊聚类的组合家具三维造型设计模型 杨丹丹 (142)
- 基于模式识别的机器人运行轨迹数据分类存储系统设计 刘 帅, 王敏珍, 刘 超 (145)
- 基于衰变三分扰动蜻蜓算法的医学图像配准 杜晓昕, 张剑飞, 王一萍, 金 梅, 梁 伟 (149)
- 基于数据挖掘算法的移动电子商务群体用户访问控制模型 李 艳 (153)
- 一种二阶构造设计模式的对象构造新方法 崔群超, 荆文芳 (157)
- 石化装置现场人员立体定位终端设计 朱 亮 (160)

人工智能

- 仿真假体视觉下神经网络算法的应用研究 赵 瑛, 李 琦, 王冬晖, 于爱萍, 谷 宇 (164)
- 基于Lévy飞行的自适应差分进化算法 呼忠权, 王洪斌 (167)
- 基于三维建模的室内景观设计系统设计 汤喜辉 (173)
- 基于人工智能的网络舆情大数据传播特征挖掘系统 罗 平, 武 斌 (176)
- 基于LBS云平台的微信小程序二维码区域定位系统设计 陆 霞 (180)
- 基于人工智能的钢琴编曲音色识别系统设计 全智倍 (183)

声 明

本刊已许可国内外相关数据库和中国知网在其系列数据库产品中以数字化方式复制、汇编、发行、信息网络传播本刊全文。该社著作权使用费与本刊稿酬一并支付(相关稿酬不再另行支付)。作者向本刊提交文章发表的行为即视为同意我社上述声明。

Contents

Design of automation monitoring system for real-time sensitive information of electrical equipment	LI Haiyu (1)
Design of FPGA-based broken yarn detection platform using gray projection algorithm	MENG Lifan, GAO Wenxue (4)
Design of radiation protection effect based on Hamming code and latch detection circuit	CHANG Yuan, SHEN Guohong, JING Tao, LU Li (8)
Design of remote blood cold chain transportation monitoring system	TAN Yang, GUO Xiaojin, CHENG Li (11)
Synchronous sampling and processing of multi-channel surface myoelectric signal	CHEN Lei, LIN Mingxing, DAI Chenggang, WU Xiaojian (17)
Design of cascade PID LPF control system for rotating inverted pendulum	ZHANG Xiaoming, WANG Kunkun, YU Jiyun (21)
Design of FPGA-based circuit for real-time carrier frequency detection	CHEN Wenyi, RONG Xing, YANG Hui (25)
Design of program-controlled buck-boost DC/DC converter	WANG Yu, YOU Zhiyu (29)
Multi-channel data storage technology based on FPGA and Flash	WU Jiawei, WEI Zhiqiang, ZHANG Huixin (34)
Real-time image processing system for electronic fluorescence endoscope	QIU Peng, YE Bing, MA Jingyun (38)
Design of real-time and efficient location analysis system based on WiFi data	HAN Ping, WANG Hao, FANG Cheng, NIU Yonggang, JIA Yunfei (43)
Design of LabVIEW-based multi-parameter monitoring system for smart home	HAN Jian, MO Deqing (48)
Design of cryptography-based dynamic encryption system for network multimodal information	MI Xiaofu (51)
Design of teaching management electronic information system based on MVC mode	RAN Qiwu, HUANG Jinfeng, DONG Fengbin, JIANG Jun (54)
Research on exploratory data analysis for SNR performance in LoRa communication	FANG Haifeng, TAN Rong, HAN Yuanbin, ZHAO Jijun (58)
Research on ZigBee node positioning algorithm based on CQPSO-GRNN	ZOU Ziming, LI Fumin, QIAO Xinxin (62)
Crime scene investigation image classification algorithm based on color channel fusion features	LIU Ying, ZHANG Qiannan, WANG Fuping, LEI Yanbo, GONG Yanchao, YANG Fanchao (67)
Palmprint recognition based on integrated filtering EOH-SIFT features and fuzzy reasoning	TAO Xiaojiao, LU Jin (73)
Prediction of route selection behavior based on passenger trust-network	FENG Xia, ZHANG Chen, LU Min (78)
Webpage design teaching quality assessment system based on ranking algorithms of community search modules	LI Suzhen (83)
Optimization of traffic statistic software in CDMA mobile communication	HE Nan, WU Xiaoxue, GU Jun (87)
Design of remote network video monitoring system based on digital media DSP	LIU Bohong (90)
Design of computer-aided classroom teaching system based on data mining	CHEN Gang, LI Yingyu, LÜ Xin (94)
Design on college education information recommendation system based on fuzzy algorithm of multivariate mixed criteria	LI Linxia (97)
Research on data acquisition, compression and transmission of broadband seismograph	WANG Julong, ZHANG Huaizhu, XUAN Jinpeng (100)
Research on erbium-doped fiber amplifier with gain flattening type	YOU Xujia, TIAN Xiaojian (104)
Experimental analysis for infrared thermal imaging fault prediction of contactor	WANG Jun, LI Wei, YU Yue, ZHOU Jiwen, YE Chao (108)

- Influence of motor speed fluctuation in laser scanning diameter measuring gauge on accuracy and its error correction
DUAN Changchao, PENG Song, TAN Jun, FANG Hui (112)
- Design of multi-role virtual character 3D fusion system based on visual communication
LIANG Zhihui, ZHENG Wenfeng (117)
- Design of industrial product design and display platform based on 3D visionMIAO Weiping (120)
- Design of information risk assessment system based on factor analysis and neural network
LI Xiaoting, BAO Jingling, SUN Jianguang, WANG Ji (123)
- Research on motion video content classification algorithm based on improved support vector machine
XU Shuxian (127)
- Virtual design and modeling based on 3D virtual landscape.....KANG Linying, ZHU Wenyao (130)
- Design of environmental art based on digital virtual technologyCHEN Zenghui (134)
- Human action recognition based on two-stream independently recurrent neural network
GE Penghua, ZHI Min, YU Hua, HAO Yan (137)
- 3D modeling design model of modular furniture based on fuzzy clusteringYANG Dandan (142)
- Design of robot moving trajectory data classification and storage system based on pattern recognition
LIU Shuai, WANG Minzhen, LIU Chao (145)
- Method of medical image registration based on dragonfly algorithm with decay and tripartite disturbances
DU Xiaoxin, ZHANG Jianfei, WANG Yiping, JIN Mei, LIANG Wei (149)
- Data mining algorithm based access control model for users of mobile e-commerce communityLI Yan (153)
- An object construction new method for second-order structural design pattern.....CUI Qunchao, JING Wenfang (157)
- Design of stereo localization terminal for field personnel in petrochemical deviceZHU Liang (160)
- Application of neural networks algorithm in artificial prosthesis vision
ZHAO Ying, LI Qi, WANG Donghui, YU Aiping, GU Yu (164)
- Adaptive differential evolution algorithm based on Lévy flight.....HU Zhongquan, WANG Hongbin (167)
- Design of interior landscape design system based on three-dimensional modelingTANG Xihui (173)
- AI-based propagation feature mining system for network public opinion big dataLUO Ping, WU Bin (176)
- Design of WeChat mini program two-dimensional code region positioning system based on LBS cloud platform
LU Xia (180)
- Design of piano arrangement timbre recognition system based on artificial intelligenceTONG Zhibei (183)

本刊主要荣誉

中文核心期刊
 中国科技核心期刊
 RCCSE 中国核心学术期刊(A)
 中国学术期刊影响因子年报统计源期刊
 中国新闻出版总署资料库收藏期刊
 中文科技期刊数据库全文收录期刊
 中国学术期刊(光盘版)期刊
 陕西省精品科技期刊
 中国期刊全文数据库收录期刊
 中国学术期刊综合评价数据库来源期刊
 中国科技论文统计与分析用刊
 美国《乌利希期刊指南》收录期刊

声明

1. 《现代电子技术》编辑部系陕西电子杂志社下辖《现代电子技术》杂志的唯一编辑、征稿部门,编辑部在社外无任何形式的组稿代理、外聘编辑等;

2. 作者投稿唯一通道为《现代电子技术》官方网站采编系统,且要求所有文章的通信作者为文章主要署名作者,不接受非署名作者投稿。