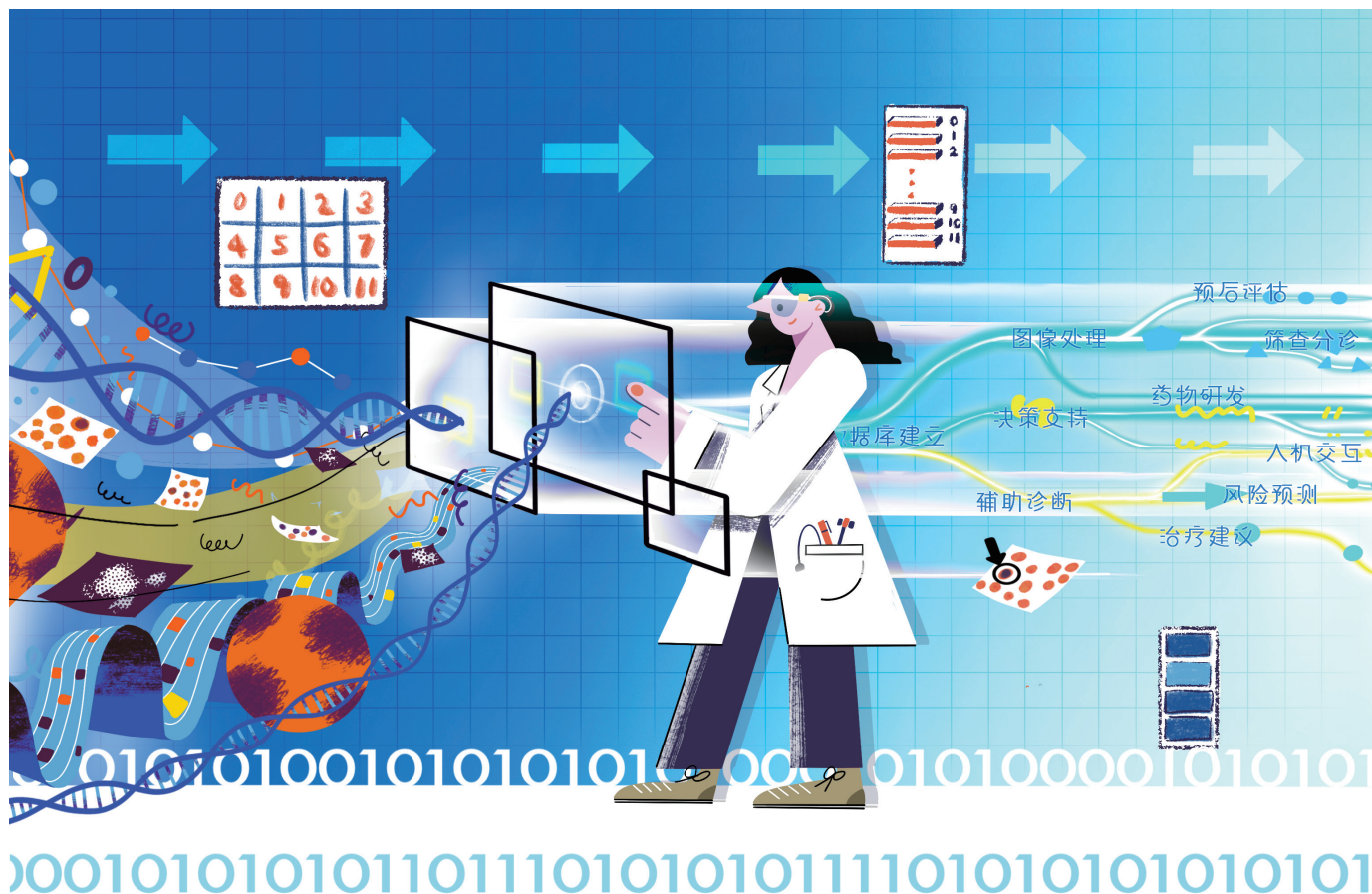


協和醫學



MEDICAL JOURNAL OF PEKING UNION MEDICAL COLLEGE HOSPITAL



北京協和醫院

PEKING UNION MEDICAL COLLEGE HOSPITAL

协和医学杂志

XIEHE YIXUE ZAZHI

双月刊 2010年7月创刊 第12卷 第5期 2021年9月30日出版



本刊微信公众号



过刊阅览

主管

国家卫生健康委员会

主办

中国医学科学院
100730 北京市东单三条9号
北京协和医院
100730 北京市帅府园1号

主编

赵玉沛

本期执行主编

金征宇

本期执行副主编

陈丽萌 陈有信 刘洁
孙昊 薛华丹 朱以诚

编辑部副主任(主持工作)

李娜

医学编辑

李玉乐 董哲

美术编辑

李政 戴申倩

出版

《协和医学杂志》编辑部
100730 北京市帅府园1号
电话: 010-69154261/4262
网址: <http://xhyzz.pumch.cn>
E-mail: mjpumch@126.com, medj@pumch.cn

发行

中国邮政集团有限公司北京市报刊
发行局
邮发代号: 2-719
北京协和科技开发有限责任公司
电话: 010 69156685
E-mail: yeziliren@126.com
中国国际图书贸易集团有限公司
代号: C9442

广告代理

北京协和科技开发有限责任公司

广告发布登记号

京东市监广登字 20170143 号

印刷

北京博海升彩色印刷有限公司

定价

每期 50 元, 全年 300 元

中国标准连续出版物号

ISSN 1674-9081

CN 11-5882/R

2021 年版权归中国医学科学院

北京协和医院所有

如有印装质量问题, 可向本刊编辑部
调换

刊名题词: 赵朴初

目次

述评

- 重视医学影像人工智能数据库的标准化建设 599
石镇维, 刘再毅

专家论坛

- 多模态深度学习及其在眼科人工智能的应用展望 602
李锡荣
人机交互技术在神经系统疾病辅助诊断中的应用: 现状与前景
..... 608
李洋, 汪柳萍, 黄进, 范向民, 田丰
医学大数据与人工智能标准体系: 现状、机遇与挑战 614
张知非, 杨郑鑫, 黄运有, 詹剑锋

观点

- 《心力衰竭通用定义和分类》将开启心力衰竭诊疗的标准化
进程 621
徐芬, 周洲

指南与共识

- 中国加速康复外科临床实践指南(2021)(一) 624
中华医学会外科学分会, 中华医学会麻醉学分会
中国加速康复外科临床实践指南(2021)(二) 632
中华医学会外科学分会, 中华医学会麻醉学分会
中国加速康复外科临床实践指南(2021)(三) 641
中华医学会外科学分会, 中华医学会麻醉学分会
中国加速康复外科临床实践指南(2021)(四) 650
中华医学会外科学分会, 中华医学会麻醉学分会
中国加速康复外科临床实践指南(2021)(五) 658
中华医学会外科学分会, 中华医学会麻醉学分会
常见红斑鳞屑性皮肤病的皮肤镜与组织病理学特征相关性
专家共识(2021) 666
中国医疗保健国际交流促进会皮肤科分会, 中国医疗保健
国际交流促进会华夏皮肤影像人工智能协作组, 中国医学
科学院北京协和医学院北京协和医院皮肤科
米托坦治疗肾上腺皮质癌专家共识(2021) 674
北京协和医院罕见病多学科协作组

标准与规范

- 糖尿病视网膜病变眼底彩照人工智能研究标准数据库的建立规范
..... 684

于伟泓, 张潇, 吴婵, 陈欢, 杨治坤, 贺峰, 张枝桥,
张碧磊, 巩迪, 王月麟, 杨景元, 李冰, 孙燕媛, 马亚静,
陆慧琴, 夏蔚, 周伟, 张东磊, 潘庆敏, 杨宁, 王淑娜,
孙晓蕾, 遇颖, 苏畅, 万博, 汪明启, 王敏, 陈有信

论 著

- 基于皮肤镜图像智能分析的早期蕈样肉芽肿诊断模型构建 689
刘兆睿, 张漪澜, 谢凤英, 刘 洁
- CT 影像组学模型预测膀胱癌术后 1 年复发的初步研究 698
张古沐阳, 许梨梨, 毛 丽, 李秀丽, 金征宇, 孙 昊
- 基于 T2 加权成像的影像组学特征和临床特征模型在早期宫颈鳞状细胞癌深间质浸润中的
诊断价值 705
任 静, 何泳蓝, 李 源, 曹 颖, 夏 晨, 向阳 , 薛华丹, 金征宇
- 基于 T2 加权成像及弥散加权成像的图像纹理分析预测宫颈鳞状细胞癌放化疗疗效的临床价值 ... 713
苏佰燕, 戚亚菲, 管 慧, 何泳蓝, 薛华丹, 金征宇
- 早/中孕期孕妇肠道菌群差异及其与妊娠期糖尿病的关系: 前瞻性队列研究 721
王 佩, 马良坤, 刘俊涛
- 示踪用盐酸米托蒽醌注射液用于甲状腺癌前哨淋巴结示踪的临床疗效、安全性及药代动力学
I 期试验 729
陈少博, 刘玮楠, 张圣洁, 孙 健, 杨 瑞, 王淑君, 陈 革

综 述

- 基于角膜共聚焦显微镜的神经纤维人工智能分析方法 736
吴 俊, 费思佳, 沈 博, 张瀚文, 黄剑锋, 潘 琦, 赵建春, 丁大勇
- 基于深度学习和组织病理图像的癌症分类研究进展 742
颜 锐, 陈丽萌, 李锦涛, 任 菲
- 人工智能在脑卒中神经影像中的应用 749
韩小伟, 李 茗, 张 冰
- 眼科远程医疗发展现状与前景 755
张 潇, 陈有信
- 人工智能在角膜相关疾病领域的应用研究 761
狄 宇, 李 莹
- 胰腺癌循环肿瘤细胞检测技术及临床应用前景 768
杨笑盈, 秦 骋, 赵邦博, 李天浩, 曹洪滔, 王维斌
- 开颅手术加速术后康复麻醉管理新进展 774
李 艺, 刘子嘉, 拉巴次仁, 申 乐

疑难病与罕见病专栏

- Gorham-Stout 综合征伴乳糜腹一例 780
王 强, 周 熹, 霍 力, 吴 晰

临床实践指南

- 2019 年期刊公开发表的中国临床实践指南文献调查与评价——资助与利益冲突 784
史乾灵, 王子君, 马艳芳, 王健健, 刘 辉, 罗旭飞, 杨 楠, 吕 萌, 刘云兰, 荀杨芹,
关泉林, 陈耀龙

援藏援疆专栏

- 西藏地区成人重症患者真菌检出情况及其影响因素分析 791
付建奎, 苏龙翔, 潘文君, 蔺国英, 柴文昭, 王小亭

肿瘤药物治疗进展

- 免疫治疗相关肝毒性的诊断与管理 798
华雨薇, 赵 林

教学与科研

- 临床医学 (八年制) 专业医学生甲状腺癌认知情况调查 807
聂永都, 刘芑昊, 林劲楷, 曹增涵, 徐协群

医史钩沉

- 1921—1951 年北京协和医院药剂科学术影响力 813
朱 珠, 张 波, 李乃适, 唐 彦, 梅 丹, 李大魁

MEDICAL JOURNAL OF PEKING UNION MEDICAL COLLEGE HOSPITAL

Bimonthly Established in July 2010 Volume 12, Number 5 September 30, 2021

Responsible Institution

National Health Commission of the
People's Republic of China

Sponsor

Chinese Academy of Medical
Sciences (CAMS)
9 Dong Dan San Tiao, Beijing 100730, China
Peking Union Medical College
Hospital (PUMCH)
1 Shuaifuyuan, Beijing 100730, China

Editor-in-Chief

ZHAO Yupeí

Managing Senior Editor

LI Na

Medical Editor

LI Yule DONG Zhe

Editing

Editorial Board of Medical
Journal of Peking Union
Medical College Hospital
1 Shuaifuyuan, Beijing 100730, China
Tel: 86-10-69154261/4262
Website: <http://xhyxz.pumch.cn>
E-mail: mjpumch@126.com, medj@pumch.cn

Publishing

Editorial Office of Medical
Journal of Peking Union
Medical College Hospital
1 Shuaifuyuan, Beijing 100730, China
Tel: 86-10-69154261/4262
Website: <http://xhyxz.pumch.cn>
E-mail: mjpumch@126.com, medj@pumch.cn

Overseas Distributor

China International Book
Trading Corporation

Printing

Beijing BOHS Color Printing Co., Ltd.

Mail-Order

Beijing Union Technology
Development Co., Ltd.
1 Shuaifuyuan, Beijing 100730, China
Tel: 86-10-69156685
E-mail: yeziliren@126.com

CSSN

ISSN 1674-9081

CN 11-5882/R

Copyright © 2021 by the Chinese
Academy of Medical Sciences &
Peking Union Medical College
Hospital

CONTENTS IN BRIEF

Editorial

- Attaching Importance to the Standardized Construction of Artificial Intelligence Database of Medical Imaging** 599
SHI Zhenwei, LIU Zaiyi

Specialist Forum

- Multi-modal Deep Learning and Its Applications in Ophthalmic Artificial Intelligence** 602
LI Xirong
- Application of Human-Computer Interaction Technology in Ancillary Diagnosis of Nervous System Diseases: Current Situation and Prospect** 608
LI Yang, WANG Liuping, HUANG Jin, FAN Xiangmin, TIAN Feng
- Big Medical Data and Medical AI Standards: Status Quo, Opportunities and Challenges** 614
ZHANG Zhifei, YANG Zhengxin, HUANG Yunyou, ZHAN Jianfeng

Opinion

- Universal Definition and Classification of Heart Failure Triggers the Standardization of Diagnosis and Treatment of Heart Failure** 621
XU Fen, ZHOU Zhou

Guideline and Consensus

- Clinical Practice Guidelines for ERAS in China (2021) (I)** 624
Chinese Society of Surgery, Chinese Society of Anesthesiology
- Clinical Practice Guidelines for ERAS in China (2021) (II)** 632
Chinese Society of Surgery, Chinese Society of Anesthesiology
- Clinical Practice Guidelines for ERAS in China (2021) (III)** 641
Chinese Society of Surgery, Chinese Society of Anesthesiology
- Clinical Practice Guidelines for ERAS in China (2021) (IV)** 650
Chinese Society of Surgery, Chinese Society of Anesthesiology
- Clinical Practice Guidelines for ERAS in China (2021) (V)** 658
Chinese Society of Surgery, Chinese Society of Anesthesiology
- Correlation Between the Dermoscopic Features and the Histopathological Features of Common Erythematous Diseases: the Consensus Statement of Chinese Experts (2021)** 666
Dermatology Branch of China International Exchange and Promoting Association for Medical and Health Care, Huaxia Skin Image and Artificial Intelligence Cooperation, China International Exchange and Promoting Association for Medical and Health Care, Department of Dermatology, Peking Union Medical College Hospital, Chinese Academy of Medical Sciences & Peking Union Medical College
- Consensus on the Treatment of Adrenocortical Carcinoma with Mitotane (2021)** 674
Multi-disciplinary Team for Rare Diseases, Peking Union Medical College Hospital

Standard and Specification

- Procedures of Establishing a Well-annotated Database of Color Fundus Photography of Diabetic Retinopathy for Artificial Intelligence Research** 684
YU Weihong, ZHANG Xiao, WU Chan, CHEN Huan, YANG Zhikun, HE Feng, ZHANG Zhiqiao, ZHANG Bilei, GONG Di, WANG Yuelin, YANG Jingyuan, LI Bing, SUN Yanyuan, MA Yajing, LU Huiqin, XIA Wei, ZHOU Wei, ZHANG Donglei, PAN Qingmin, YANG Ning, WANG Shuna, SUN Xiaolei, YU Ying, SU Chang, WAN Bo, WANG Mingqi, WANG Min, CHEN Youxin

Original Contributions

- Early Diagnosis Model of Mycosis Fungoides Based on Intelligent Analysis of Dermoscopic Images** 689
LIU Zhaorui, ZHANG Yilan, XIE Fengying, LIU Jie
- CT-based Radiomics to Predict Recurrence of Bladder Cancer after Resection in One Year: A Preliminary Study** 698
ZHANG Gumuyang, XU Lili, MAO Li, LI Xiuli, JIN Zhengyu, SUN Hao
- The Value of Model Based on Radiomics Features of T2-weighted Imaging and Clinical Feature in Diagnosing the Depth of Stromal Invasion of Cervical Squamous Cell Carcinoma** 705
REN Jing, HE Yonglan, LI Yuan, CAO Ying, XIA Chen, XIANG Yang, XUE Huadan, JIN Zhengyu
- Texture Analysis of Sequential Images of T2-weighted Imaging and Diffusion-weighted Imaging for Predicting the Efficacy of Chemoradiotherapy in Cervical Squamous Cell Carcinoma** 713
SU Baiyan, QI Yafei, GUAN Hui, HE Yonglan, XUE Huadan, JIN Zhengyu
- Difference in Gut Microbiota between the First and the Second Trimester of Pregnancy and the Association of Gut Microbiota with Gestational Diabetes Mellitus: A Prospective Cohort Study** 721
WANG Pei, MA Liangkun, LIU Juntao
- Clinical Efficacy, Safety and Pharmacokinetics of Tracing Injection of Mitoxantrone Hydrochloride for Tracing Sentinel Lymph Nodes in Thyroid Carcinoma: A Phase I Clinical Trial** 729
CHEN Shaobo, LIU Weinan, ZHANG Shengjie, SUN Jian, YANG Rui, WANG Shujun, CHEN Ge

Reviews

- Artificial Intelligence Analysis of Nerve Fibers Based on Corneal Confocal Microscopy** 736
WU Jun, FEI Sijia, SHEN Bo, ZHANG Hanwen, HUANG Jianfeng, PAN Qi, ZHAO Jianchun, DING Dayong
- Research Progress of Cancer Classification Based on Deep Learning and Histopathological Images** 742
YAN Rui, CHEN Limeng, LI Juntao, REN Fei
- Application of Artificial Intelligence in Neuroimaging of Stroke** 749
HAN Xiaowei, LI Ming, ZHANG Bing
- Current Situation and Prospect of Teleophthalmology** 755
ZHANG Xiao, CHEN Youxin
- The Application and Research Progress of Artificial Intelligence in Corneal Related Diseases** 761
DI Yu, LI Ying
- Detection Technology and Prospects of Clinical Application of Circulating Tumor Cells in Pancreatic Cancer** 768
YANG Xiaoying, QIN Cheng, ZHAO Bangbo, LI Tianhao, CAO Hongtao, WANG Weibin
- New Advances in Anesthesia Management of Enhanced Recovery After Surgery in Craniotomy** 774
LI Yi, LIU Zijia, LABA Ciren, SHEN Le

Complicated and Rare Disease

- A Case Report of Gorham-Stout Syndrome with Chyloperitoneum** 780
WANG Qiang, ZHOU Xi, HUO Li, WU Xi

Clinical Practice Guidelines

- Investigation and Evaluation of Chinese Clinical Practice Guidelines Published in Medical Journals in 2019: Funding and Conflicts of Interest** 784
SHI Qianling, WANG Zijun, MA Yanfang, WANG Jianjian, LIU Hui, LUO Xufei, YANG Nan, LYU Meng, LIU Yunlan, XUN Yangqin, GUAN Quanlin, CHEN Yaolong

Medical Supports to Tibet & Xinjiang

- Analysis of the Situation and Influencing Factors of Fungal Detection in Adult Patients with Severe Diseases in Tibet Region** 791
FU Jianlei, SU Longxiang, PAN Wenjun, LIN Guoying, CHAI Wenzhao, WANG Xiaoting

Drug Therapy for Tumors

- Diagnosis and Management of Immunotherapy-related Liver Toxicity** 798
HUA Yuwei, ZHAO Lin

Teaching and Research

- Investigation on Cognition of Thyroid Carcinoma Among Medical Students** 807
NIE Yongdu, LIU Penghao, LIN Jinkai, CAO Zenghan, XU Xiequn

History of Medicine

- Academic Influence of the Pharmacy Department of Peking Union Medical College Hospital from 1921 to 1951** 813
ZHU Zhu, ZHANG Bo, LI Naishi, TANG Yan, MEI Dan, LI Dakui