



全国中文核心期刊
中国科协优秀期刊

湖北省优秀期刊
EI 核心收录期刊

ISSN 1000-6915
CODEN YLGXF5

岩石力学与工程学报

CHINESE JOURNAL OF
ROCK MECHANICS AND ENGINEERING

第33卷 增刊2(总第291期)

Vol.33 Supp.2(Total No.291)



Supp.2
2014

ISSN 1000-6915



中国岩石力学与工程学会 主办
科学出版社 出版



岩石力学与工程学报

2014年8月15日 第33卷 增刊2(总第291期)

目次

第一部分：岩石力学理论与试验

温度与荷载作用下岩石损伤模型.....张慧梅, 雷利娜, 杨更社 (3391)

考虑分形特征的节理面渗流计算模型.....王刚, 黄娜, 蒋宇静, 李博, 吴学震, 张学朋 (3397)

水力压裂岩体损伤破裂折迭突变模型研究与应用.....赵万春, 王婷婷, 付晓飞, 官兵 (3406)

破碎带软岩流变力学试验与参数辨识研究.....张玉, 徐卫亚, 王伟, 邵建富, 顾锦健 (3412)

岩石抗压强度的尺寸效应及端部约束的离散元数值模拟.....孙超, 刘芳, 蒋明镜, 陈贺 (3421)

高应力下原煤三轴卸荷力学特性研究.....刘泉声, 刘恺德, 卢兴利, 朱杰兵 (3429)

页岩微观结构及岩石力学特征实验研究.....时贤, 程远方, 蒋恕, 蔡东升, 张涛 (3439)

加锚节理岩体流变模型及数值模拟.....林永生, 何吉, 陈胜宏 (3446)

岩石节理应力-渗流耦合试验系统研究进展.....肖维民, 夏才初, 邓荣贵 (3456)

不同频率循环荷载下石灰岩疲劳特性试验研究.....赵凯, 乔春生, 罗富荣, 郝志宏 (3466)

卸荷条件下含瓦斯煤力学特性试验研究.....徐佑林, 康红普, 张辉, 王维忠 (3476)

岩石结构面粗糙度系数 *JRC* 定量确定方法研究.....李化, 黄润秋 (3489)

同组软硬煤煤样声发射及分形特征研究.....高保彬, 李回贵, 李林, 王晓蕾, 于水军 (3498)

多场耦合煤层气开采物理模拟试验系统的研制和应用.....刘东, 许江, 尹光志, 王维忠, 彭守建, 梁永庆 (3505)

基于广义位势理论的本构模型的数值试验验证.....钟志辉, 杨光华, 傅旭东, 温勇, 张玉成 (3515)

基于核磁共振技术的大理岩卸荷损伤演化规律研究.....周科平, 胡振襄, 李杰林, 高峰, 王明球 (3523)

隧道-滑坡体系的预加固机制及模型试验研究.....吴红刚, 杨涛, 马惠民, 张红利 (3531)

Barton 标准剖面 *JRC* 与独立于离散间距的统计参数关系研究.....孙辅庭, 余成学, 万利台 (3539)

卸载条件下层状岩体力学特性研究.....熊良宵, 虞利军, 杨昌斌, 李天斌 (3545)

节理迹长与隙宽的相关性对裂隙岩体水力学特性的影响.....吴月秀, 刘泉声, 李金兰, 何军 (3555)

循环荷载作用下煤变形与能量演化规律试验研究.....许江, 李波波, 周婷, 刘东, 曹偲, 叶桂兵 (3563)

基于钻孔压水试验的岩层阻渗能力研究.....黄震, 姜振泉, 曹丁涛, 李廷 (3573)

基于掘进面应力和瓦斯浓度动态变化的煤与瓦斯突出预警试验研究.....姜福兴, 尹永明, 朱权洁, 王存文, 曲效成 (3581)

引汉济渭工程边坡岩体抗剪强度特性研究.....郭喜峰, 晏鄂川, 吴相超, 尹健民, 何沛田 (3589)

基于激光共聚焦扫描显微镜的岩爆试验碎片表面分形特征.....马艾阳, 伍法权, 沙鹏, 王定伟 (3595)

煤中吸附气体的渗流规律研究.....冯增朝, 郭红强, 李桂波, 赵静, 吕兆兴 (3601)

遇水-风干循环作用下泥岩断裂的微观机制研究.....杨建林, 王来贵, 李喜林, 赵国超 (3606)

锚固岩体蠕变特性的物理模拟实验研究.....辛亚军, 勾攀峰 (3613)

单轴拉伸作用下不等长裂纹相互影响的断裂力学分析.....席婧仪, 陈忠辉, 张伟 (3625)

基于沉积特征的层状盐岩界面抗剪强度特性研究.....张桂民, 李银平, 刘伟, 张光辉 (3631)

两向不等压圆形巷道弹性摄动解.....侯公羽, 李晶晶, 赵伟伟, 刘颖, 陈智超, 田乐 (3639)

凝结水对碳酸盐岩溶蚀实验及数值模拟分析.....张傲, 方云, 陈建平, 范子龙 (3648)

负温饱水红砂岩三轴压缩强度特性试验研究.....单仁亮, 杨昊, 郭志明, 刘校东, 宋立伟 (3657)

北山深部花岗岩在压缩条件下的破裂演化与强度特性.....赵星光, 马利科, 苏锐, 王驹 (3665)

责任编辑: 吴火珍 付少兰 刘素锦 陶婧 排版: 刘玉英 易开珍 龚倩

第二部分：岩土工程与技术

- 龙首矿围岩流变特性理论分析及现场监测.....王洪江,李公成,吴爱祥,仪海豹,孙伟,王晓宁,何建元(3676)
- 大断面通道近距离上穿盾构隧道引起的变形分析.....贺美德,刘军,乐贵平,张顶立,王梦恕(3682)
- 一次采全高综采工作面覆岩冒落带动态发育特征.....熊祖强,王晓蕾,刘成威,李回贵(3692)
- 双面岩质高陡边坡加速度高程放大效应的时频分析方法.....杨长卫,张建经,刘飞成(3699)
- 爆破震动作用下斜坡体的地震动分布及其动应力响应特征.....石玉成,卢育霞,何少林,孙军杰,刘兴旺,刘琨(3707)
- 抗滑桩计算的综合刚度与三参数法数值解.....邹盛堂,戴自航(3718)
- 预应力锚索砂浆包裹体20年夹层未凝现象及其成因初探.....任爱武,汪彦枢,樊海柱,贾志欣,王玉杰,姜昭群(3724)
- 考虑温度及水化时间效应的水泥浆液流变特性研究.....刘泉声,卢超波,刘滨,卢兴利(3730)
- 城市地铁电子雷管爆破降振技术试验研究.....杨仁树,车玉龙,孙强,高祥涛(3741)
- 高放废物地质处置库北山预选区新场岩体地应力场分布规律.....赵星光,王驹,马利科,苏锐,金远新,陈群策,安其美,秦向辉(3750)
- 深部采动断层异变的强制逆冲机制.....李铁,王金安,刘军(3760)
- 水力作用下缓倾顺层复合介质边坡滑移破坏机制分析.....夏开宗,陈从新,刘秀敏,周意超,程关文,宋娅芬(3766)
- 岩层结构运动演化数控机械模拟试验系统研制及应用.....郭惟嘉,李杨杨,范炜琳,朱学军,王海龙,孙熙震(3776)
- 川东缓倾红层中降雨诱发型滑坡机制研究.....张明,胡瑞林,殷跃平,吴瑞安(3783)
- 基于改进灰色-时序分析时变模型的边坡位移预测.....张正虎,袁孟科,邓建辉,薛守宁(3791)
- 高烈度地震区高边坡支挡结构振动台试验研究.....刘昌清,蒋楚生,梁瑶,李想(3798)
- 岩体渗透各向异性对地下水封油库围岩稳定性的影响.....宋琨,晏鄂川,高连通,梁佳佳(3803)
- 山区铁路沿线泥石流灾害预警研究.....李朝安,王良玮,廖凯,范荣(3810)
- 电力隧道先隧后井施工中简易井应用的若干问题研究.....莫海鸿,杨春山,陈俊生,鲍树峰(3817)
- 桩间复合结构土拱效应试验与受力机制研究.....梁瑶,蒋楚生,李庆海,李飞,赵晓彦(3825)
- 钻前工程竹筋加筋土工程特性试验研究.....张玲玲,文华,张志伟(3829)
- 雁门关铁路隧道挤压变形问题分析.....许再良,孙元春(3834)
- 幂律型流体的柱-半球形渗透注浆机制研究.....杨志全,侯克鹏,程涌,杨八九(3840)
- 基于煤层围岩波速结构探测的工作面冲击危险性预评价技术.....王书文,毛德兵,潘俊锋,刘少虹,蓝航(3847)
- 中空注浆锚索周边剪应力分布规律研究.....李桂臣,孙辉,张农,卫英豪,张磊(3856)
- 采动岩体能量释放及灾变机制研究.....薛东杰,周宏伟,钟江城,黄亚明(3865)
- 滑动面力学参数对滑坡稳定性影响研究——以重庆武隆鸡尾山滑坡为例.....葛云峰,唐辉明,熊承仁,王亮清,吴益平(3873)
- 沿软弱夹层滑动的地震滑坡分析.....邓检良,许强,古关润一(3885)
- 巨高巷道围岩稳定及控制.....许磊,吴焕凯,李博,肖同强(3891)
- 运营铁路隧道衬砌安全性模糊模式识别评价方法研究.....杨艳青,高永涛,贺少辉,齐法琳(3903)
- 浅埋暗挖法下穿既有盾构隧道的变形特性分析.....李倩倩,张顶立,房倩,李栋(3911)
- 在顶爆作用下锚杆轴力分布规律研究.....王光勇,顾金才,张向阳,单芙蓉,周建伟(3919)
- 玄武岩岩体围岩位移特征研究.....黄秋香,闫晶晶,汪家林,邓建辉(3924)
- 基于 UDEC 的岩质边坡开挖爆破节点拟静力稳定性计算方法.....郑允,陈从新,朱玺玺,潘正义,欧哲,周意超,夏天游(3932)
- 龙门石窟岩体裂隙防渗注浆机制及参数分析.....刘祥友,翟国林,方云,范子龙(3941)
- 缓慢卸载 P 波诱发岩体不连续断裂破坏的可能性研究.....朱哲明,刘凯,康骥鸣,张晓燕(3948)
- 地下水平盐岩储库顶板交界层面滑移破坏与强度破坏特性分析.....郝铁生,梁卫国,张传达(3956)
- 鄂西北片岩变形参数各向异性及水敏性研究.....王章琼,晏鄂川,黄祥嘉,王琪(3967)
- 基于突变理论的地下厂房围岩稳定性安全评价.....赵瑜,张建伟,院淑芳(3973)
- 基于三维激光扫描数据的边坡开挖质量评价方法研究.....胡超,周宜红,赵春菊,潘志国,冯诚诚(3979)
- 金川全尾砂-棒磨砂混合充填料胶砂强度与料浆流变特性研究.....杨志强,高谦,王永前,陈得信,把多恒(3985)
- 全长黏结式锚杆锚固段荷载传递机制非线性分析.....黄明华,周智,欧进萍(3992)
- 露天矿边坡微地震监测研究综述.....李健,吴顺川,高永涛,谢玉玲,季毛伟(3998)
- 青岛地区隧道开挖引起地表沉降偏态分析及预测.....袁长丰,袁子晋,刘世波,李国龙,李亮(4014)

土石混合体损伤开裂计算细观力学探讨	王宇, 李晓	(4020)
基于混凝土损伤模型的灌注桩水平承载性状分析	蔡忠祥, 刘陕南, 高承勇, 侯胜男	(4032)
浅埋红黏土隧洞围岩含水率迁移研究及地层结构反演分析	吕高, 李宁, 朱才辉, 陈莉静, 秦佳佳, 刘新星	(4041)
基于节理摩擦能的地下洞室岩体结构动力稳定性评价	王帅, 盛谦, 朱泽奇, 付晓东	(4049)
地形因子对坡脚型地震滑坡运动参数的影响研究	樊晓一, 田述军, 段晓冬, 张友谊	(4056)
盾构隧道管片施工期容许上浮量研究	叶俊能, 刘源, 陈仁朋, 汤旅军	(4067)
既有线下邻近大断面地铁双隧道暗挖施工对地表形变的影响	王东元, 曲慧红, 李文波	(4075)
近距离平行通过地裂缝的地铁隧道模拟试验研究	贺凯, 彭建兵, 黄强兵, 吴明	(4086)
非等距时间序列模型在隧道拱顶位移预测中的应用	何亚伯, 梁城	(4096)
强降雨特性对饱和-非饱和边坡失稳破坏的影响	张社荣, 谭尧升, 王超, 于茂	(4102)
基于弹塑性模型的微型抗滑桩破坏机制研究	辛建平, 郑颖人, 唐晓松	(4113)
基于矢量和-非连续变形分析的滑坡安全系数计算方法研究	付晓东, 盛谦, 张勇慧	(4122)
新安煤矿回风石门软岩巷道恒阻大变形耦合支护对策研究	孙晓明, 王冬, 杨军, 徐慧臣, 刘宗权, 陈峰	(4129)

第三部分：土工基础

固化土电阻率变化规律与经验模型	章定文, 曹智国, 刘松玉	(4139)
基于裂离比的粗粒土级配曲线预测模型	畅帅, 徐日庆	(4145)
复杂环境中基坑施工安全风险预警标准	顾雷雨, 黄宏伟, 陈伟, 龚固培, 王德法, 杨辉	(4153)
Eu(III)在膨润土-砂混合物中的迁移试验研究	周浪, 张虎元, 陈航, 闫铭	(4163)
石碑源饱和黄土地震液化机制探讨	王谦, 王峻, 王兰民, 王平, 钟秀梅	(4168)
PHC与CFG桩复合地基在高速铁路基底中处理效果试验对比	沈宇鹏, 毛远凤, 荆鹏, 程万慧, 田亚护	(4174)
真空预压-电渗法联合加固软黏土地基试验研究	王军, 张乐, 刘飞禹, 符洪涛	(4181)
层状地基中大直径端承桩的竖向振动特性研究	任青, 高战士, 吕洪勇	(4193)
基于GDS固结渗透试验参数的竖井地基固结非线性有限元分析	邓岳保, 谢康和, 李菲菲, 刘千斌	(4203)
砾石颗粒形状对砂砾土动剪切模量和阻尼比影响的试验研究	孙田, 陈国兴, 王炳辉, 李小军	(4211)
新近吹填淤泥地基真空固结排水系统现场研发	鲍树峰, 董志良, 莫海鸿, 陈平山	(4218)
各向异性颗粒材料双轴压缩试验的离散元数值模拟	童朝霞, 周敏, 张连卫, 姚仰平	(4227)
合肥石灰改良膨胀土的非饱和强度试验研究	汪明武, 秦帅, 李健, 徐鹏	(4233)
随机地震荷载作用下高速铁路黄土路基震陷试验分析	王峻, 王谦, 王兰民, 王平, 柴少峰	(4239)
改良粉质黏土公路路基的竹筋加固技术研究	雷挺, 文华, 张玲玲, 姚勇	(4246)
铅污染黏土微观结构与变形强度特性	陆海军, 廖朱玮, 汪琪, 赵颖, 陈威	(4252)
青藏铁路多年冻土地基输电塔热棒桩基稳定性试验研究	蒋代军, 王旭, 刘德仁, 夏琼	(4258)
地基土模型对土-结构相互作用体系地震响应影响的初步分析	王国波, 于艳丽, 蒋沧如, 何卫	(4264)
滨海相软土延拓邓肯-张模型的数值模拟研究	俞缙, 李天斌, 郑春婷, 蔡燕燕, 涂兵雄, 穆康	(4271)
砂土蠕变特性试验研究	杨奇, 冷伍明, 聂如松, 周文权, 朱文兵	(4282)
软岩深基坑预应力锚杆承载特性与滑移面确定试验研究	杨校辉, 朱彦鹏, 郭楠, 黄雪峰	(4287)
黄土场地剪切波速影响因素模糊灰关联分析研究	王平, 王强, 王峻, 王谦	(4299)
矩形深基础地基极限承载力的理论解	邵国建, 周旋, 胡丰	(4305)
混合型缓冲回填材料导热性能测试与预测研究	陈航, 张虎元, 郭永强, 闫铭, 陈晓宁	(4312)
一种粗粒土非线性剪胀模型的扩展及其验证	潘家军, 程展林, 饶锡保, 陈云, 徐晗	(4321)
高分子材料改性粉土力学特性试验研究及机制探讨	董金梅, 朱华, 边疆, 高洪梅	(4326)
粗粒土三维细观组构与本构关系研究	董启朋, 姚海林, 卢正, 詹永祥	(4334)
青藏工程走廊公路路基热影响数值分析	易鑫, 喻文兵	(4343)
主应力轴纯旋转条件下黏土弹塑性变形特性	严佳佳, 周建, 刘正义, 龚晓南	(4350)
静钻根植竹节桩在软土地基中的应用及其承载力计算	周佳锦, 龚晓南, 王奎华, 张日红, 严天龙	(4359)
南水北调高填方渠道沉降过程计算方法研究	张宇, 陈善雄, 余飞, 熊署丹, 戴张俊	(4367)
超大厚度 Q_2 黄土场地单桩承载力试验研究	朱彦鹏, 董芸秀, 包泽学, 马天忠, 来春景	(4375)
荆江大堤下伏饱和粉细砂最大动剪模量经验估算	江洎洳, 饶锡保, 张伟, 潘家军, 王占彬	(4384)

Chinese Journal of Rock Mechanics and Engineering

Vol. 33, Supp.2 (Total No. 291) Aug. 15, 2014

CONTENTS

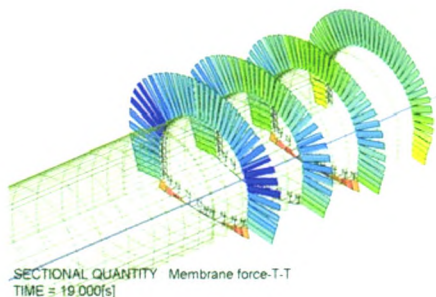
Damage Model of Rock under Temperature and Load	ZHANG Huimei, LEI Lina, YANG Gengshe	(3391)
Seepage Calculation Model for Rough Joint Surface Considering Fractal Characteristics	WANG Gang, HUANG Na, JIANG Yujing, LI Bo, WU Xuezheng, ZHANG Xuepeng	(3397)
Study of Damage Tensor Folding Mutation Model for Fracturing Rock Mass and Its Application	ZHAO Wanchun, WANG Tingting, FU Xiaofei, GUAN Bing	(3406)
Study of Rheological Tests and Its Parameters Identification of Soft Rock in Fractured Belt	ZHANG Yu, XU Weiya, WANG Wei, SHAO Jianfu, GU Jinjian	(3412)
Size Effect of Compression Strength and End Constraint of Rocks by Distinct Element Simulation	SUN Chao, LIU Fang, JIANG Mingjing, CHEN He	(3421)
Study of Mechanical Properties of Raw Coal under High Stress with Triaxial Unloading	LIU Quansheng, LIU Kaide, LU Xingli, ZHU Jiebing	(3429)
Experimental Study of Microstructure and Rock Properties of Shale Samples	SHI Xian, CHENG Yuanfang, JIANG Shu, CAI Dongsheng, ZHANG Tao	(3439)
Rheological Model and Numerical Simulation of Jointed Rock Masses Reinforced by Passive and Fully-grouted Bolt	LIN Yongsheng, HE Ji, CHEN Shenghong	(3446)
Advances in Development of Coupled Stress-flow Test System for Rock Joints	XIAO Weimin, XIA Caichu, DENG Ronggui	(3456)
Experimental Study of Fatigue Characteristics of Limestone Samples Subjected to Uniaxial Cyclic Loading with Different Frequencies	ZHAO Kai, QIAO Chunsheng, LUO Furong, HAO Zhihong	(3466)
Experimental Study of Mechanical Properties of Coal Containing Gas under Unloading Conditions	XU Youlin, KANG Hongpu, ZHANG Hui, WANG Weizhong	(3476)
Method of Quantitative Determination of Joint Roughness Coefficient	LI Hua, HUANG Runqiu	(3489)
Study of Acoustic Emission and Fractal Characteristics of Soft and Hard Coal Samples with Same Group	GAO Baobin, LI Huigui, LI Lin, WANG Xiaolei, YU Shuijun	(3498)
Development and Application of Multi-field Coupling Test System for Coal-bed Methane(CBM) Exploitation	LIU Dong, XU Jiang, YIN Guangzhi, WANG Weizhong, PENG Shoujian, LIANG Yongqing	(3505)
Numerical Test Verification of Constitutive Model Based on the Generalized Potential Theory	ZHONG Zhihui, YANG Guanghua, FU Xudong, WEN Yong, ZHANG Yucheng	(3515)
Study of Marble Damage Evolution Laws under Unloading Conditions Based on Nuclear Magnetic Resonance Technique	ZHOU Keping, HU Zhenxiang, LI Jieli, GAO Feng, WANG Mingqiu	(3523)
Research of Pre-reinforcement Mechanism and Model Test of Tunnel-landslide System	WU Honggang, YANG Tao, MA Huimin, ZHANG Hongli	(3531)
Research on Relationship between JRC of Barton's Standard Profiles and Statistic Parameters Independent of Sampling Interval	SUN Futing, SHE Chengxue, WAN Litai	(3539)
Research on Mechanical Characteristics of Interlayered Rock Mass under Unloading Condition	XIONG Liangxiao, YU Lijun, YANG Changbin, LI Tianbin	(3545)
Effect of Correlation between Joint Trace and Aperture on Hydro-mechanical Behavior of Fractured Rock Mass	WU Yuexiu, LIU Quansheng, LI Jinlan, HE Jun	(3555)
Experimental Study of Deformation and Energy Evolution Law of Coal under Cyclic Loading	XU Jiang, LI Bobo, ZHOU Ting, LIU Dong, CAO Jie, YE Guibing	(3563)
Study of Impermeability of Rock Stratum Based on Water Injection Test	HUANG Zhen, JIANG Zhenquan, CAO Dingtao, LI Ting	(3573)
Experimental Study of Precaution Technology of Heading Face Coal and Gas Outburst Based on Dynamic Changes of Stress and Methane Concentration	JIANG Fuxing, YIN Yongming, ZHU Quanjie, WANG Cunwen, QU Xiaocheng	(3581)
Research on Shear Strength Characteristics of Slope Rock Mass on Project of Water Diversion from Han to Wei River Project	GUO Xifeng, YAN Echuan, WU Xiangchao, YIN Jianmin, HE Peitian	(3589)
Fractal Characteristic of Fragment Surface from Rock Burst Test Based on Confocal Laser Scanning Microscope	MA Aiyang, WU Faquan, SHA Peng, WANG Dingwei	(3595)
Study of Adsorbed Gas Seepage Law in Coal	FENG Zengchao, GUO Hongqiang, LI Guibo, ZHAO Jing, LU Zhaoxing	(3601)
Research on Micro-fracture Mechanism of Mudstone after Wet-dry Cycles	YANG Jianlin, WANG Laigui, LI Xilin, ZHAO Guochao	(3606)
Study on Physical Simulation Experiment for Anchorage Rock Creep Characteristics	XIN Yajun, GOU Panfeng	(3613)
Fracture Mechanics Analysis of Unequal Cracks Interaction under Uniaxial Tension	XI Jingyi, CHEN Zhonghui, ZHANG Wei	(3625)
Study of Shear Strength Properties of Interfaces in Bedded Salt Formations Based on Sedimentary Characteristics	ZHANG Guimin, LI Yiping, LIU Wei, ZHANG Guanghui	(3631)
Perturbation Solutions for Elasto-plastic Problems of Circular Tunnel under Unequal Compression	HOU Gongyu, LI Jingjing, ZHAO Weiwei, LIU Ying, CHEN Zhichao, TIAN Le	(3639)
Dissolution Experiment and Numerical Simulation Analysis for Condensation Water on Carbonate Rocks	ZHANG Ao, FANG Yun, CHEN Jianping, FAN Zilong	(3648)
Experimental Study of Strength Characters of Saturated Red Sandstone on Negative Temperature under Triaxial Compression	SHAN Renliang, YANG Hao, GUO Zhiming, LIU Xiaodong, SONG Liwei	(3657)
Fracture Evolution and Strength Characteristics of Beishan Deep Granite under Compression Conditions	ZHAO Xingguang, MA Like, SU Rui, WANG Ju	(3665)
Theoretical Analysis for Rheological Characteristics of Surrounding Rock and On-site Monitoring in Longshou Mine	WANG Hongjiang, LI Gongcheng, WU Aixiang, YI Haibao, SUN Wei, WANG Xiaoning, HE Jianyuan	(3676)
Deformation Analysis for Shield Tunnel Upper Crossing by Close Range Large Section Passageway	HE Meide, LIU Jun, LE Guiping, ZHANG Dingli, WANG Mengshu	(3682)
Dynamic Development Characteristics of Caving Zone Overburden Strata in Fully-mechanized Mining Stope under One-pass Mining	XIONG Zuqiang, WANG Xiaolei, LIU Chengwei, LI Huigui	(3692)
Time-frequency Analysis Method of Amplification Effect of Acceleration of High and Steep Hill with Two-side Rock Slopes	YANG Changwei, ZHANG Jianjing, LIU Feicheng	(3699)
Distribution Characteristics of Ground Motion and Dynamic Stress Response of Valley Slopes under Blasting Loading	SHI Yucheng, LU Yuxia, HE Shaolin, SUN Junjie, LIU Xingwang, LIU Kun	(3707)
Numerical Solutions of Composite Stiffness and Tri-parameter Method for Calculation of Anti-slide Piles	ZOU Shengtang, DAI Zihang	(3718)

A Phenomenon of Anchorage Grout Interlayer without Solidification in Twenty Years and Its Reasons Analysis	REN Aiwu, WANG Yanshu, FAN Haizhu, JIA Zhixin, WANG Yujie, JIANG Zhaoqun	(3724)
Research on Rheological Behavior for Cement Grout Considering Temperature and Hydration Time Effects	LIU Quansheng, LU Chaobo, LIU Bin, LU Xingli	(3730)
Experimental Study of Decreasing Blasting Vibration Technology with Digital Detonator in Urban Subway	YANG Renshu, CHE Yulong, SUN Qiang, GAO Xiangtao	(3741)
Distribution Characteristics of Geostress Field in Xinchang Rock Block of Candidate Beishan Area for High Level Radioactive Waste Repository in China	ZHAO Xingguang, WANG Ju, MA Like, SU Rui, JIN Yuanxin, CHEN Qunce, AN Qimei, QIN Xianghui	(3750)
Forced Thrust Mechanism of Fault Mutation in Deep Mining	LI Tie, WANG Jin'an, LIU Jun	(3760)
Analysis of Sliding Failure Mechanism of Gently Inclined Bedding Compound Rock Mass Slope under Hydraulic Pressure	XIA Kaizong, CHEN Congxin, LIU Xiumin, ZHOU Yichao, CHEN Guanwen, SONG Yafen	(3766)
Research and Manufacture of Numerical Control Mechanical Simulation Testing System for Movement Evolution of Strata Structure and Its Application	GUO Weijia, LI Yangyang, FAN Weilin, ZHU Xuejun, WANG Hailong, SUN Xizhen	(3776)
Study of Mechanism of Landslide Induced by Rainfall in Gently Inclined Red Stratum in East Sichuan Basin	ZHANG Ming, HU Ruilin, YIN Yueping, WU Ruian	(3783)
Displacement Prediction of Slope Based on Improved Grey-time Series Time-varying Model	ZHANG Zhenghu, YUAN Mengke, DENG Jianhui, XUE Shouming	(3791)
Study of Shaking Table Test for High Slope Retaining Structure on Highly Seismic Region	LIU Changqing, JIANG Chusheng, LIANG Yao, LI Xiang	(3798)
Influence of Anisotropic Permeability of Rockmass on Stability of Underground Oil Storage Caverns	SONG Kun, YAN Echuan, GAO Liantong, LIANG Jiajia	(3803)
Study of Early Warning Mechanism of Debris Flow along Railway Line in Mountainous Areas	LI Chaoan, WANG Liangwei, LIAO Kai, FAN Rong	(3810)
Several Issues on Simply-constructed Well of Electric Tunnel when Tunnels Followed by Well Excavation	MO Haihong, YANG Chunshan, CHEN Junsheng, BAO Shufeng	(3817)
Analysis of Stress Mechanism of Pile Composite Structure Based on Soil Arch Test	LIANG Yao, JIANG Chusheng, LI Qinghai, LI Fei, ZHAO Xiaoyan	(3825)
Application Research on Bamboo of Subgrade in Preliminary Engineering for Drilling	ZHANG Lingling, WEN Hua, ZHANG Zhiwei	(3829)
Tunneling in Squeezing Ground Conditions: with a Case Study of Yanmenguan Railway Tunnel	XU Zailiang, SUN Yuanchun	(3834)
Study of Column-hemispherical Penetration Grouting Mechanism Based on Power-law Fluid	YANG Zhiquan, HOU Kepeng, CHENG Yong, YANG Bajiu	(3840)
Rockburst Hazard Pre-evaluation Technology Based on Wave Velocity Structure Detection of Coal Bed Surrounding Rock	WANG Shuwen, MAO Debing, PAN Junfeng, LIU Shaohong, LANhang	(3847)
An Investigation into Shear Stress Distribution around Hollow Grouting Anchor Cables	LI Guichen, SUN Hui, ZHANG Nong, WEI Yinghao, ZHANG Lei	(3856)
Mining-induced Release of Energy from Rock and Mechanism on Catastrophic Failure	XUE Dongjie, ZHOU Hongwei, ZHONG Jiangcheng, HUANG Yaming	(3865)
Effect of Sliding Plane Mechanical Parameters on Landslide Stability—a Case Study of Jiweishan Rockslide in Wulong, Chongqing	GE Yunfeng, TANG Huiming, XIONG Chengren, WANG Liangqing, WU Yiping	(3873)
Evaluation of Earthquake Slope Failure along a Weak Layer	DENG Jianliang, XU Qiang, KOSEKI Junichi	(3885)
Stability and Control of Surrounding Rock in Ultra-high Roadway	XU Lei, WU Huankai, LI Bo, XIAO Tongqiang	(3891)
Safety Evaluation of Railway Tunnel Lining by Fuzzy Pattern Recognition	YANG Yanqing, GAO Yongtao, HE Shaohui, QI Falin	(3903)
Study of Deformation Characteristics of Tunnels Traversing Adjacently under Shield Tunnels by Shallow Tunneling Method	LI Qianqian, ZHANG Dingli, FANG Qian, LI Dong	(3911)
Research on Axial Force Distribution of Rock Bolts under Top Explosion	WANG Guangyong, GU Jincui, ZHANG Xiangyang, SHAN Furong, ZHOU Jianwei	(3919)
Displacement Characteristics of Basalt Surrounding Rock Mass	HUANG Qiuxiang, YAN Jingjing, WANG Jialin, DENG Jianhui	(3924)
Node Quasi-static Stability Analysis of Rock Slope under Excavation Blasting Based on UDEC	ZHENG Yun, CHEN Congxin, ZHU Xixi, PAN Zhengyi, OU Zhe, ZHOU Yichao, XIA Tianyou	(3932)
Impermeable Grouting Mechanism and Parameter Analysis of Fracture Rock in Longmen Grottoes	LIU Xiangyou, ZHAI Guolin, FANG Yun, FAN Zilong	(3941)
Study of Slowly Unloading P-waves Causing Discrete Fracture Mechanism	ZHU Zheming, LIU Kai, KANG Jiming, ZHANG Xiaoyan	(3948)
Analysis of Slippage and Fracture Characteristic on Roof Interface of Underground Horizontal Salt Caverns	HAO Tiesheng, LIANG Weiguo, ZHANG Chuanda	(3956)
Anisotropic and Water Sensitivity Properties Study of Schist Deformation Parameters in Northwest of Hubei Province	WANG Zhangqiong, YAN Echuan, HUANG Xiangjia, WANG Qi	(3967)
Safety Evaluation for Stability of Underground Powerhouse Surrounding Rock Based on Catastrophe Theory	ZHAO Yu, ZHANG Jianwei, YUAN Shufang	(3973)
Slope Excavation Quality Evaluation Based on Three-dimensional Laser Scan Data	HU Chao, ZHOU Yihong, ZHAO Chunju, PAN Zhiguo, FENG Chengcheng	(3979)
Research on Filling Body Strength and Rheological Properties of Mixed Filling Mortar with Unclassified Tailings and Rod Milling Sand in Jinchuan Mine	YANG Zhiqiang, GAO Qian, WANG Yongqian, CHEN Dexin, BA Duoheng	(3985)
Nonlinear Analysis on Load Transfer Mechanism of Wholly Grouted Anchor Rod along Anchoring Section	HUANG Minghua, ZHOU Zhi, OU Jinping	(3992)
Review of Slope Micro-seismic Monitoring in Open-pit Mine	LI Jian, WU Shunchuan, GAO Yongtao, XIE Yuling, JI Maowei	(3998)
Skewness Analysis and Forecasting of Surface Subsidence Caused by Tunnel Excavation in Qingdao	YUAN Changfeng, YUAN Zijin, LIU Shibo, LI Guolong, LI Liang	(4014)
Research on Damage Cracking for Rock and Soil Aggregate Using Calculation Meso-mechanics	WANG Yu, LI Xiao	(4020)
Analysis of Lateral Response of Bored Piles Based on Concrete Damaged Plasticity Model	CAI Zhongxiang, LIU Shannan, GAO Chengyong, HOU Shengnan	(4032)
Study of Moisture Content Migration of Red Clay and Stratigraphic Structure Inversion Analysis in Shallow Buried Tunnel	LU Gao, LI Ning, ZHU Caihui, CHEN Lijing, QIN Jiajia, LIU Xinxing	(4041)
Dynamic Stability Evaluation for Rock Structure around Underground Cavern Based on Frictional Energy on Joints	WANG Shuai, SHENG Qian, ZHU Zeqi, FU Xiaodong	(4049)
Study of Topography Factors Influence on Motion Parameters for Seismic Slope-toe Landslides	FAN Xiaoyi, TIAN Shujun, DUAN Xiaodong, ZHANG Youyi	(4056)

Study of the Permissible Value of Upward Floating for Segment in Shield Tunnel Construction	YE Junneng, LIU Yuan, CHEN Renpeng, TANG Lujun	(4067)
Issues Affecting Ground Subsidence Induced by Covered Excavation for Large Cross-sectional Twin Tunnel under Existing Structures	WANG Dongyuan, QU Huihong, LI Wenbo	(4075)
Simulation Test of Metro Tunnel Parallels Ground Fissure with Short Distance	HE kai, PENG Jianbing, HUANG Qiangbing, WU Ming	(4086)
A Non-equidistant Time Series Model and Its Application in Tunnel Vault Crown Displacement Prediction	HE Yabo, LIANG Cheng	(4096)
Influence of Heavy Rainfall Characteristics on Saturated-unsaturated Slope Failure	ZHANG Sherong, TAN Yaosheng, WANG Chao, YU Mao	(4102)
Research on Failure Mechanism of Anti-sliding Micropiles Based on Elastoplastic Model	XIN Jianping, ZHENG Yingren, TANG Xiaosong	(4113)
Research on Safety Factor Computation of Landslide Based on Vector Sum-discontinuous Deformation Analysis Method	FU Xiaodong, SHENG Qian, ZHANG Yonghui	(4122)
Research on Countermeasure of Constant Resistance and Large Deformation Coupling Support of Return Air Course Soft Rock Roadway in Xin'an Coal Mine	SUN Xiaoming, WANG Dong, YANG Jun, XU Huichen, LIU Zongquan, CHEN Feng	(4129)
Characteristics and an Experiential Model of Electrical Resistivity of Stabilized Soils	ZHANG Dingwen, CAO Zhiguo, LIU Songyu	(4139)
Forecasting Model of Grain Size Grading Curves of Coarse-grained Materials Based on Discarding Ratio	CHANG Shuai, XU Riqing	(4145)
Safety Risk Early-warning Standard of Foundation Pit in Complex Environment during Excavating	GU Leiyu, HUANG Hongwei, CHEN Wei, GONG Gupei, WANG Defa, YANG Hui	(4153)
Laboratory Research on Migration of Eu(III) in Compacted GMZ Bentonite-sand Mixtures	ZHOU Lang, ZHANG Huyuan, CHEN Hang, YAN Ming	(4163)
Discussion on Mechanism of Seismic Liquefaction of Saturation Loess in Shibe Tableland, Guyuan City	WANG Qian, WANG Jun, WANG Lanmin, WANG Ping, ZHONG Xiumei	(4168)
Experimental Effect Contrast between PHC and CFG Pile-raft Composite Foundation in High Speed Railway Base Treatment	SHEN Yupeng, MAO Yuanfeng, JING Peng, CHENG Wanhui, TIAN Yahu	(4174)
Experimental Study of Vacuum Preloading Combined Reinforcement with Electro-osmosis in Soft Clay Ground	WANG Jun, ZHANG Le, LIU Feiyu, FU Hongtao	(4181)
Vertical Vibration Characteristics of Large-diameter End-bearing Pile in Layered Soil	REN Qing, GAO Zhanshi, LU Hongyong	(4193)
Nonlinear Finite Element Analysis of Consolidation for Vertical Drained Ground with Parameters Determined from GDS Consolidation Permeability Tests	DENG Yuebao, XIE Kanghe, LI Feifei, LIU Ganbin	(4203)
Experimental Research of Effect of Granule Shape on Shear Modulus and Damping Ratio of Gravel	SUN Tian, CHEN Guoxing, WANG Binghui, LI Xiaojun	(4211)
Field Research on Drainage System of Vacuum Preloading Technology for Fresh Hydraulic Reclamation Silt	BAO Shufeng, DONG Zhiliang, MO Haihong, CHEN Pingshan	(4218)
Numerical Modelling of Biaxial Compression Tests for Granular Materials with Inherent Anisotropy Using DEM	TONG Zhaoxia, ZHOU Min, ZHANG Lianwei, YAO Yangping	(4227)
Strength of Unsaturated Lime-treated Expansive Clay in Hefei	WANG Mingwu, QIN Shuai, LI Jian, XU Peng	(4233)
Laboratory Analysis of Seismic Subsidence of Loess Subgrade of High-speed Railway under Random Seismic Loading	WANG Jun, WANG Qian, WANG Lanmin, WANG Ping, CHAI Shaofeng	(4239)
Bamboo Reinforcement Technology in Improved Silty Clay Road Subgrade	LEI Ting, WEN Hua, ZHANG Lingling, YAO Yong	(4246)
Microstructure and Deformation Properties of Polluted Clay by Pb ²⁺ Chemical Solution	LU Haijun, LIAO Zhuwei, WANG Qi, ZHAO Ying, CHEN Wei	(4252)
Experimental Study of Stability of Piled Foundation with Thermosyphons of Power Transmission Tower along Qinghai—Tibet Railway in Permafrost Regions	JIANG Daijun, WANG Xu, LIU Deren, XIA Qiong	(4258)
Preliminary Analysis of Influence of Soil Models on Seismic Response of Soil-structure Interaction System	WANG Guobo, YU Yanli, JIANG Cangru, HE Wei	(4264)
Numerical Simulation Research on Prolongation Duncan-Chang Model for Seashore Soft Soil	YU Jin, LI Tianbin, ZHENG Chunting, CAI Yanyan, TU Bingxiong, MU Kang	(4271)
Laboratory Test Study of Creep Behavior of Sandy	YANG Qi, LENG Wuming, NIE Rusong, ZHOU Wenquan, ZHU Wenbing	(4282)
Experimental Research on Bearing Behavior of Prestressed Anchor and Determination of Slip Surface in Deep Excavation of Weak Rock	YANG Xiaohui, ZHU Yanpeng, GUO Nan, HUANG Xuefeng	(4287)
Research on Loess Site's Shear Wave Velocity Influencing Factor Based on Fuzzy-gray Relational Analysis	WANG Ping, WANG Qiang, WANG Jun, WANG Qian	(4299)
Theoretical Solution of Ultimate Bearing Capacity of Deep Rectangle Foundation	SHAO Guojian, ZHOU Xuan, HU Feng	(4305)
Measurement and Prediction of Thermal Properties of Bentonite-sand Mixtures as Buffer Backfilling Materials for High Level Radioactive Waste	CHEN Hang, ZHANG Huyuan, GUO Yongqiang, YAN Ming, CHEN Xiaoning	(4312)
A Nonlinear Dilatancy Model's Extension and Validation for Coarsed-grained Soils	PAN Jiajun, CHENG Zhanlin, RAO Xibao, CHEN Yun, XU Han	(4321)
Experimental Research on Mechanics Characteristics and Mechanism of Silty Soil Modified by Polymer Material	DONG Jinmei, ZHU Hua, BIAN Jiang, GAO Hongmei	(4326)
Study of Microfabric and Constitutive Relation of Granular Material	DONG Qipeng, YAO Hailin, LU Zheng, ZHAN Yongxiang	(4334)
Numerical Analysis for Roadbed Heat Influence in Qinghai—Tibet Engineering Corridor	YI Xin, YU Wenbing	(4343)
Elasto-plastic Deformation Behavior of Intact Clay Subjected to Principal Stress Rotation	YAN Jiajia, ZHOU Jian, LIU Zhengyi, GONG Xiaonan	(4350)
Application of Static Drill Rooted Precast Nodular Pile in Soft Soil Foundation and Calculation for Bearing Capacity	ZHOU Jiajin, GONG Xiaonan, WANG Kuihua, ZHANG Rihong, YAN Tianlong	(4359)
Calculation Method Study of Settlement Process of High Filling Channels in South-to-north Water Diversion Project	ZHANG Yu, CHEN Shanxiong, YU Fei, XIONG Shudan, DAI Zhangjun	(4367)
Experimental Study of Bearing Capacity of Single Pile in Large Thickness Q ₂ Loess Ground	ZHU Yanpeng, DONG Yunxiu, BAO Zexue, MA Tianzhong, LAI Chunjing	(4375)
Empirical Estimates of Maximum Dynamic Shear Modulus of Saturated Fine Sand in Jingjiang Levees	JIANG Jiwei, RAO Xibao, ZHANG Wei, PAN Jiajun, WANG Zhanbin	(4384)

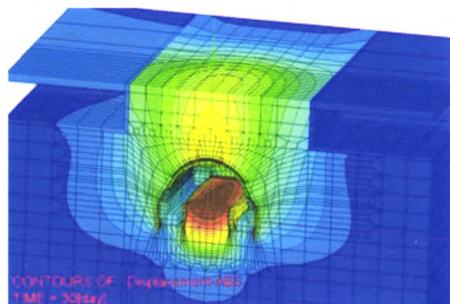
Editors: WU Huozhen FU Shaolan LIU Sujin TAO Jing
Typists: LIU Yuying YI Kaizhen GONG Qian

三维岩土有限元分析软件 Z_SOIL.PC V2013



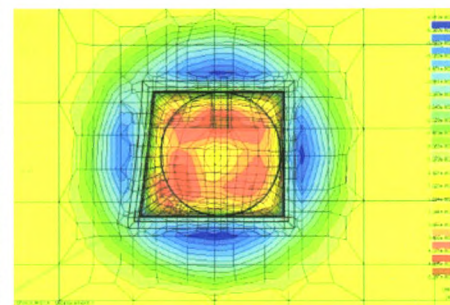
功能简介

- 大变形计算
- 应力应变分析
- 稳定性分析(强度折减法或其他方法)
- 动力时程分析
- 饱和 - 非饱和渗流分析(瞬态、稳态流)
- 流固耦合和其他耦合分析
- 蠕变分析
- 热量迁移和水分迁移(扩散)分析
- 对解决桩 - 土 - 基础共同作用问题进行了专门优化
- 参数分析
- 自动计算初始应力场和稳定渗流场
- 使用释放、加载函数模拟施工工况



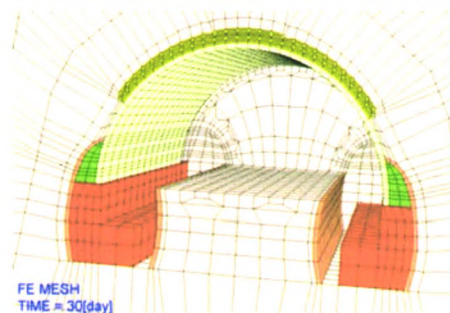
软件介绍

- 瑞士联邦理工学院 T. Zimmermann 教授 1981 年主持开发, 30 年不断改进
- 64 位版本, 支持并行计算和海量内存, 最多可处理数百万个自由度
- 功能强大, 可以分析所有的岩土工程问题
- 全功能单模块程序设计, 节约用户购置成本
- 出色的结构仿真功能, 相比专业的结构有限元分析软件也毫不逊色
- 基于 Windows 图形界面, 建模简便、计算高效、结果丰富
- 支持 ANSYS 或其他商业软件生成的网格和 DXF 格式文件导入
- 全球 2000 以上正版用户认可+24 h 开发团队直接技术支持



本构模型

- Mohr-Coulomb 模型
- Drucker-Prager-Cap 盖帽模型
- Duncan-Chang 模型
- Modified Cam-clay 模型
- HSS 小应变硬化土模型
- ECP-Hujeux 模型
- Multi-laminate 成层介质模型
- Hoek-Brown Smooth 模型
- Mentrey-Willam 混凝土软化模型
- 其他本构模型
- 用户自定义本构模型



单元库

- 桁架单元
- 线性和非线性梁单元
- 壳单元
- 膜单元
- 土工织物单元
- 钢筋和锚杆单元
- 无限介质单元
- 摩擦接触面单元
- Seepage 单元
- 桩单元和桩 - 土接触面单元
- 其他单元

购买软件即可获赠超强DELL工作站

专业版 ¥16.80 万元

教育版 ¥ 5.00 万元

中国总代理:

上海分元土木工程科技有限公司

地址: 上海市赤峰路 67 号同济大学

电话: 021 - 65984546

传真: 021 - 55036239

GeoFem

科技园2 号楼 119 室, 200092

手机: 15801983135

业精于专 止于至善

公司网站: www.geofem.com.cn

电子邮箱: sh_geofem@hotmail.com

国际标准连续出版物号
中国标准统一连续出版物号

ISSN 1000 - 6915
CN 42 - 1397/O3

广告经营
许可证

鄂工商广字 4200004000186 定价 180.00元