



ISSN 1003-6245
CN 13-1068/R

医学动物防制

YIXUE

DONGWU

FANGZHI

2021年5月 第37卷 第5期

May. 2021 Vol. 37 No.5

中国民主促进会河北省委员会 主管
中国民主促进会河北省委员会 主办

JMPC

JOURNAL OF MEDICAL PEST CONTROL

中国科技论文统计源期刊
(中国科技核心期刊)
中国生物医学核心期刊
中国期刊全文数据库期刊
中国核心期刊(遴选)数据库来源期刊



ISSN 1003-6245



9 771003 624210

0.5>

中华预防医学会系列杂志
SERIAL JOURNAL OF CHINA PREVENTIVE MEDICINE ASSOCIATION

万方数据

5

2021

医学动物防制

YIXUE DONGWU FANGZHI

月刊 1984年7月创刊 第37卷 第5期 2021年5月25日出版

主管

中国民主促进会河北省委员会
050051,石家庄市桥西区新华西路236号

主办

中国民主促进会河北省委员会
050051,石家庄市桥西区新华西路236号

编辑

医学动物防制编辑委员会

出版

医学动物防制杂志社
050011,石家庄市休门街3号滨江优谷
大厦A1商务办公楼0937号

电话:(0311)80661018

QQ:1400423224

微信:17778208446

投稿网站:www.yxdwz.com
yxdz.cbpt.net

E-mail:1400423224@qq.com

总编

段利国

编辑部主任

王玉霞

印刷

石家庄昌焯印刷有限公司

国内发行

河北报刊发行局
邮发代号:18-335

国外总发行

中国国际图书贸易集团有限公司
发行代号:M8250

邮购

医学动物防制杂志社编辑部

定价

每期10.00元,全年120.00元

中国标准连续出版物号

ISSN 1003-6245
CN 13-1068/R

2021年版权归医学动物防制杂志社

本刊刊出的所有文章不代表中华预防医学会和本刊编委会的观点,除非特别声明
如有印装质量问题,请向本刊编辑部调换

目次

论著

- 绵阳市结核杆菌耐药性突变检测结果分析 乔刚,温浩瑄,周良君,等(409)
- 数字化预防接种门诊系统的应用与展望 庞龙龙,杨威,杜国明,等(413)
- 艾滋病合并中枢神经系统病变临床特点分析 柳晓金,张珣,黄敬华,等(418)
- 河南省2019年脊髓灰质炎实验室的运转与评价 杨建辉,张璐,吕宛玉,等(421)
- 血吸虫病防控中信息化查螺技术应用及数据交互分析 李洋,宋秀兰,王浩,等(425)
- 西宁地区1283份WB检测HIV-1抗体阳性标本蛋白免疫印迹带型分析 张志芳,许宁,赵旭芳,等(430)
- 一起鼠伤寒沙门菌食物中毒的病原学检测与溯源分析 徐兰,钱惠芬,吴鹏程,等(434)
- 恙虫病“积分诊断量表”和病原学检查的临床诊断准确性比较 雷飞飞,赵琴,钟炎平,等(438)
- 张家港市水痘发病与季节气象因素相关性分析 邱海岩,沈艳,邵海枫,等(442)
- 广州市某艺术高校新生艾滋病知信行现状调查 陈月宜,杨燕君,梁穗,等(446)
- 内江市2015-2019年人群中食源性疾病流行特征和重要致病因子感染情况分析 罗月,应俊强,薛春洪,等(450)
- 梅毒血清固定发病人群Treg细胞、sCTLA-4和TP-IgM表达情况与梅毒血清固定的关系 肖蓉蓉,孙建斌,严宏,等(454)

综述

- 人间布鲁菌病研究进展 吕梦晗,张哲林,石树君,等(457)
- 无人机在高海拔地区鼠疫防控领域中的应用要点 王文龙,徐守彪,马龙,等(460)

不明原因发热伴肝脏肿大临床诊断思维 蔡美和,杨军杰,蔡美奎,等(463)

实验研究

ICR 小鼠神经干细胞的诱导分化及鉴定 孙孟军,郭建美,周更苏,等(467)

一种改进的微量凝集试验检测布鲁氏菌病抗体 马丽,赵志军,李积权,等(471)

2009 - 2018 年平顶山市手足口病病原学构成分析 李宗瑾,李艳艳,张俊杰,等(474)

邯郸峰峰矿区手足口病合并细菌感染患儿病原菌分布与耐药性分析 赵睿,袁昆,张跃栋,等(478)

两种不同前处理方法测定工作场所中锰、锌、镉的比较研究 何玉玲,陈泓秀,廖青,等(482)

调查研究

基于三种时间序列模型对广州市肾综合征出血热发病率的预测比较研究 祁娟,陈守义,陈海燕,等(485)

应用 TOPSIS 法对北京市大兴区 2017 - 2019 年传染病报告情况综合评价 高艳青,刘海博,刘晓萌,等(490)

医院洁净手术部空气消毒质量与感染风险分析 李晓宁,刘远,王大虎,等(494)

2017 - 2019 年张家港市饮用水中氟化物检测结果分析及健康风险评价 陈祝军,吴梅,秦园,等(499)

2015 - 2019 年巴彦淖尔市杭锦后旗人间布鲁菌病流行特征分析 狄震,耿纯梅,刘建国,等(502)

曲靖市某三甲医院 210 例非吸毒感染丙型肝炎病毒性肝炎病例流行病学特征分析 陈昆锐,叶蕊,施媛,等(505)

芜湖地区新生儿疾病患者血清弓形虫抗体调查 朱志伟,方芳,赵金红,等(509)

本刊实行网站在线投稿 网址: www. yxdwz. com yxdz. cbpt. net

如有疑问请与管理员信箱联系 1400423224@ qq. com

期刊基本参数 CN 13-1068/R * 1984 * m * A4 * 102 * zh * P * ¥10.00 * 2000 * (27) * 2021-05

责任编辑:段利国

JOURNAL OF MEDICAL PEST CONTROL

YIXUE DONGWU FANGZHI

Monthly Established in July, 1984 Volume 37 Number 5 May 25, 2021

Responsible Institution

China Association for Promoting Democracy,
Hebei Province Committee

Sponsor

China Association for Promoting Democracy,
Hebei Province Committee

Editing

Editorial Board of Journal of Medical Pest
Control

Publishing

Editorial Board of Journal of Medical Pest
Control

No. 3 Xiumen Street, Shijiazhuang

Tel: (0311) 80661018

QQ: 1400423224

WeChat: 17778208446

E-mail: 1400423224@qq.com

www.yxdwz.com

Editor-in-Chief

DUAN Li-guo (段利国)

Managing Director

WANG Yu-xia (王玉霞)

Printing

Shijiazhuang Changfeng Printing Co., Ltd

Domestic Distributor

Hebei Press Distribution Bureau

Code No. 18-335

Overseas Distributor

China International Book Trading Corporation

Code No. M8250

Fixed Price

10.00 yuan per issue

120.00 yuan per year

CSSN

ISSN 1003-6245

CN 13-1068/R

Copyright 2021 by the Journal of Medical Pest Control

All articles do not represent the views of the Chinese Preventive Medicine Association and the editorial board of Journal of Medical Pest Control, unless otherwise stated

CONTENTS IN BRIEF

Original Articles

- Analysis of drug resistance mutation of *Mycobacterium tuberculosis* in Mianyang
..... QIAO Gang, WENG Hao-xuan, ZHOU Liang-jun, et al (409)
- Application and prospect of digital vaccination clinic system
..... PANG Long-long, YANG Wei, DU Guo-ming, et al (413)
- Clinical analysis on cases of AIDS complicated with central nervous system
disorders
..... LIU Xiao-jin, ZHANG Xun, HUANG Jing-hua, et al (418)
- Running status and evaluation of the polio laboratory in Henan Province in
2019 YANG Jian-hui, ZHANG Lu, LYU Wan-yu, et al (421)
- Application of informationalized snail-searching technology and
interaction analysis of data
..... LI Yang, SONG Xiu-lan, WANG Hao, et al (425)
- Analysis on western blot banding patterns of positive samples of HIV-1
antibodies from 1 283 cases of WB tests in Xining
..... ZHANG Zhi-fang, XU Ning, ZHAO Xu-fang, et al (430)
- Etiologic test and traceability analysis by *Salmonella typhimurium*: a food
poisoning incident
..... XU Lan, QIAN Hui-fen, WU Peng-cheng, et al (434)
- Comparison of Clinical Diagnostic Value of the Recommended Scoring System
and Etiological Examination in the Diagnosis of tsutsugamushi disease ...
..... LEI Fei-fei, ZHAO Qin, ZHONG Yan-ping, et al (438)
- Correlation analysis on seasonal and meteorological factors and chickenpox
incidence grouped by seasons in Zhangjiagang
..... QIU Hai-yan, SHEN Yan, SHAO Hai-feng, et al (442)
- Survey on the current situation of AIDS knowledge, attitude and behavior of
first-grade students of an art university in Guangzhou
..... CHEN Yue-yi, YANG Yan-jun, LIANG Sui, et al (446)
- Analysis on the epidemic characteristics and important pathogenic factor
infection of food-borne diseases in Neijiang City from 2015 to 2019
..... LUO Yue, YING Jun-qiang, XUE Chun-hong, et al (450)
- Relations between Treg cells, sCTLA-4, TP-IgM expressions and syphilis
serum fixation
..... XIAO Rong-rong, SUN Jian-bin, YAN Hong, et al (454)

Literature Review

- Epidemiology, pathogenesis and diagnosis of brucellosis LYU Meng - han, ZHANG Zhe - lin, SHI Shu - jun, et al(457)
- Key points of UAV application in plague prevention and control in high altitude area WANG Wen - long, XU Shou - biao, MA Long, et al(460)
- Clinical diagnosis thinking of patients with fever of unknown origin accompanied by hepatomegaly CAI Mei - he, YANG Jun - jie, CAI Mei - kui, et al(463)

Experimental Research

- Induced differentiation and identification of neural stem cells in ICR mice SUN Meng - jun, GUO Jian - mei, ZHOU Geng - su, et al(467)
- Detection of antibody by improved tube agglutination assay for brucellosis MA Li, ZHAO Zhi - jun, LI Ji - quan, et al(471)
- Analysis on etiological components of hand - foot - mouth disease in Pingdingshan from 2009 to 2018 LI Zong - jin, LI Yan - yan, ZHANG Jun - jie, et al(474)
- Analysis about the distribution and drug resistance of pathogenic bacteria in children with hand - foot - mouth disease in Fengfeng coal mine area, Handan ZHAO Rui, YUAN Kun, ZHANG Yue - dong, et al(478)
- Comparative study on the determination of manganese, zinc and cadmium in workplace by two different pretreatment methods HE Yu - ling, CHEN Hong - xiu, LIAO Qing, et al(482)

Investigative Research

- A comparative prediction study on the incidence of hemorrhagic fever with renal syndrome in Guangzhou based on three time series models QI Juan, CHEN Shou - yi, CHEN Hai - yan, et al(485)
- TOPSIS method applied in comprehensive evaluation on infectious diseases reporting quality in Daxing, Beijing from 2017 to 2019 GAO Yan - qing, LIU Hai - bo, LIU Xiao - meng, et al(490)
- Analysis on air disinfection quality and infection risk of hospital clean operation department LI Xiao - ning, LIU Yuan, WANG Da - hu, et al(494)
- Health risk assessment of fluoride in drinking water in Zhangjiagang City from 2017 to 2019 CHEN Zhu - jun, WU Mei, QIN Yuan, et al(499)
- Epidemiological analysis on human brucellosis from 2015 to 2019 in Hangjinhou Banner, Bayannaer City DI Zhen, GENG Chun - mei, LIU Jian - guo, et al(502)
- Analysis on epidemiological characteristics of 210 cases with non - drug taking infection complicated with viral Hepatitis C in an AAA first - class hospital in Qujing CHEN Kun - rui, YE Rui, SHI Yuan, et al(505)
- Research on antibodies of *Toxoplasma gondii* in serums among patients with newborn infant disease in Wuhu area ZHU Zhi - wei, FANG Fang, ZHAO Jin - hong, et al(509)

责任编辑 段利国

ICR 小鼠神经干细胞的诱导分化及鉴定

(内文见 467 页)

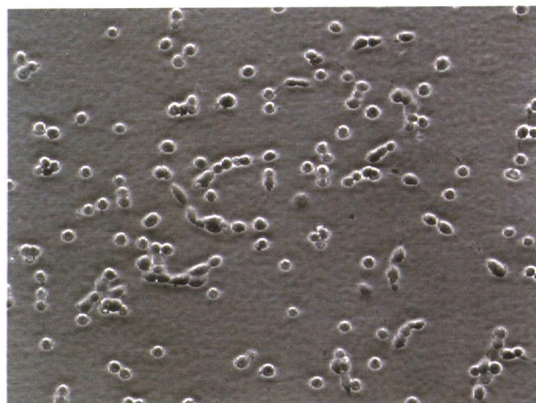


图1 消化后的单个神经干细胞(×200)

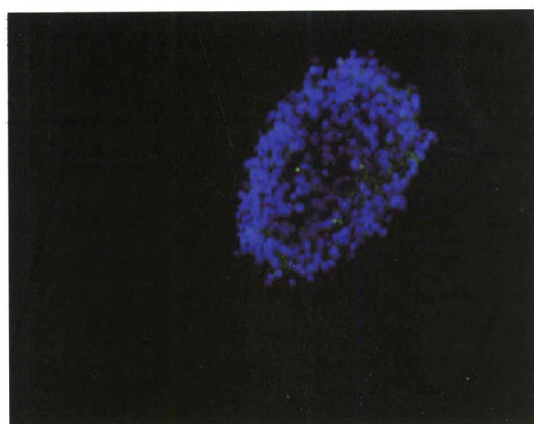


图5 神经球内微管蛋白 2 阳性细胞免疫荧光染色结果(免疫荧光染色, ×200)

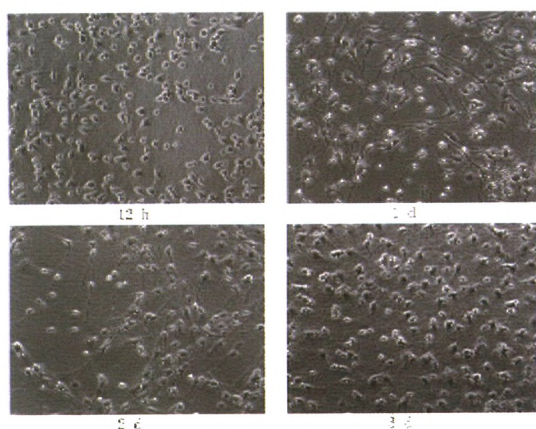


图2 不同时间点诱导分化的神经细胞(×200)

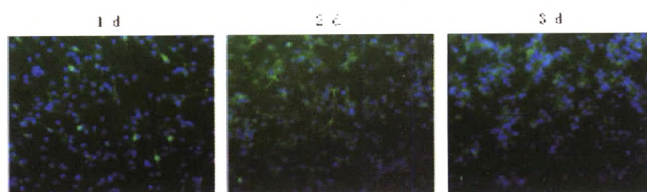


图6 不同时间点免疫荧光标记神经干细胞诱导分化后的微管蛋白 2 阳性细胞(免疫荧光染色, ×200)

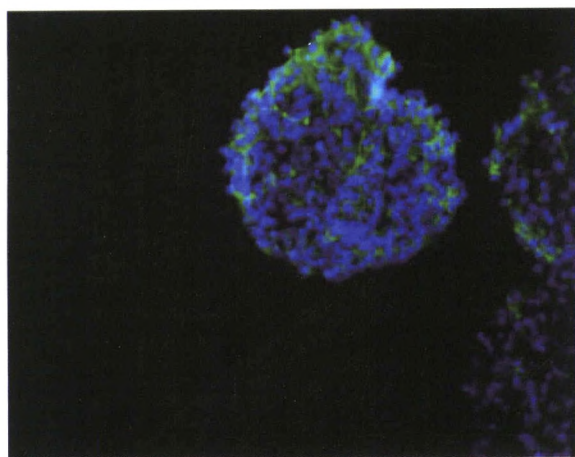


图3 神经球内巢蛋白阳性细胞免疫荧光染色结果(免疫荧光染色, ×200)

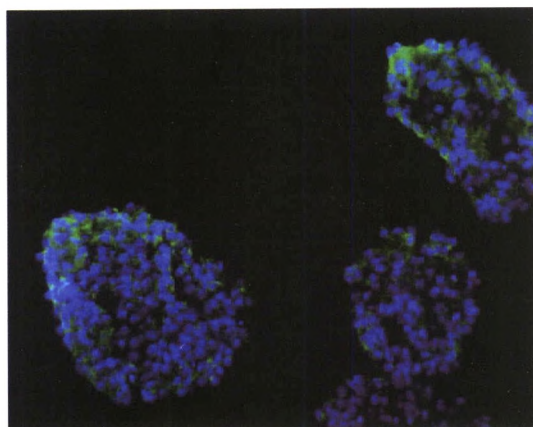


图7 神经球中胶质纤维酸性蛋白阳性细胞免疫荧光染色结果(免疫荧光染色, ×200)

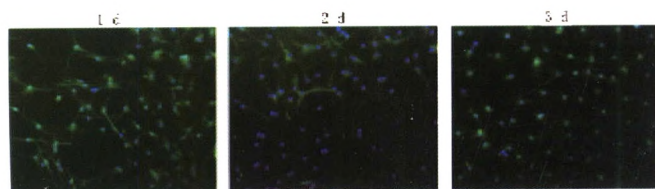


图4 不同时间点神经干细胞诱导分化后的巢蛋白阳性细胞免疫荧光染色结果(免疫荧光染色, ×200)

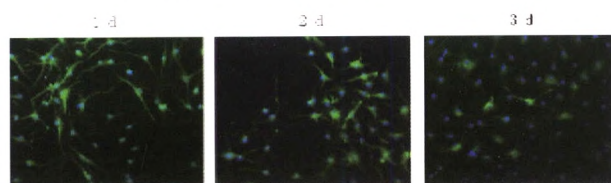


图8 不同时间点神经干细胞诱导分化后的胶质纤维酸性蛋白阳性细胞免疫荧光染色结果(免疫荧光染色, ×200)