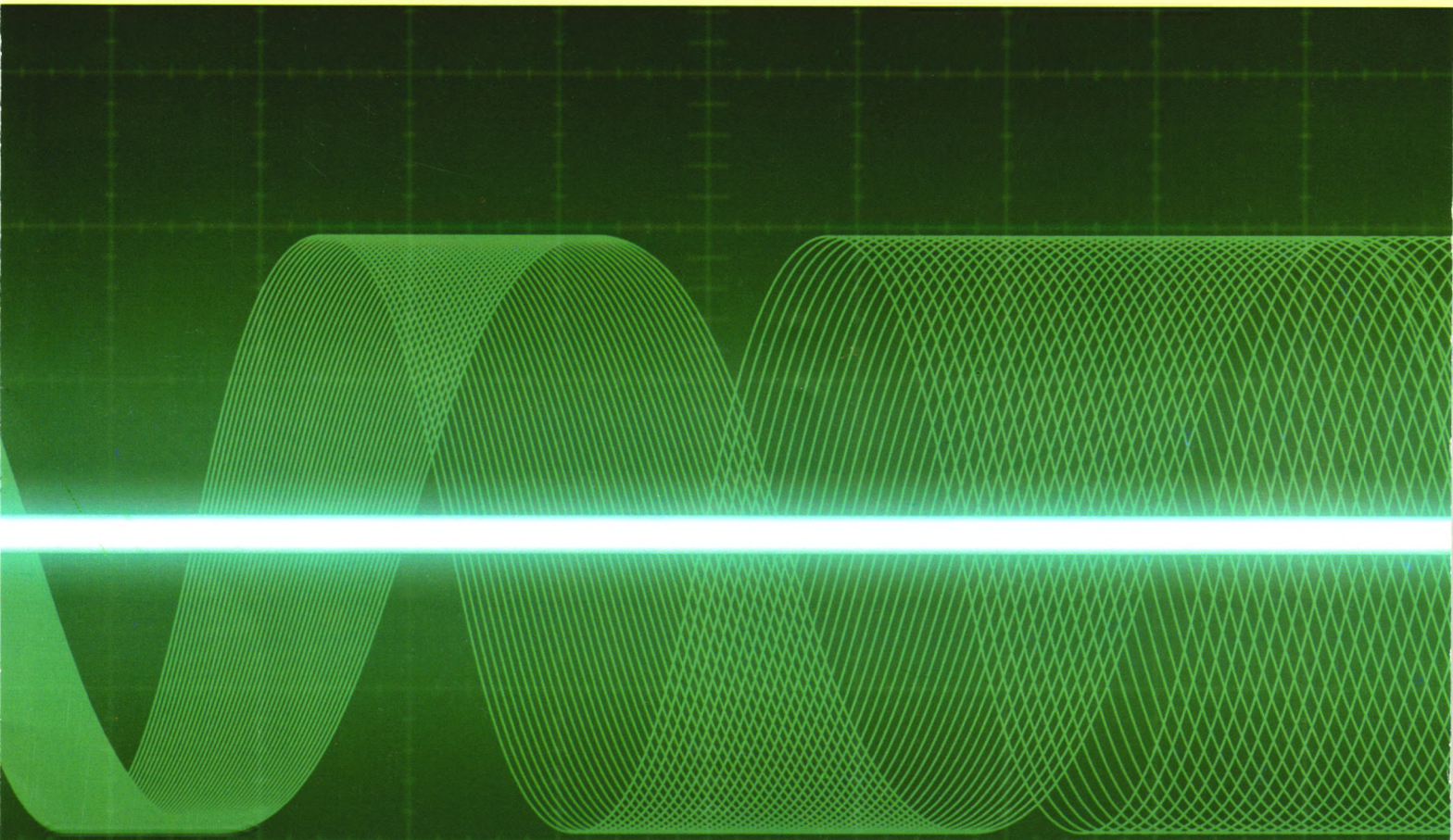


ISSN 1000-3835  
CN 31-1316/TU

# 振动与冲击

JOURNAL OF VIBRATION AND SHOCK



ZHENDONG YU CHONGJI

半月刊 | 第33卷 | **11**/2014

ISSN 1000-3835



9 771000 383141

万方数据

中国振动工程学会  
上海交通大学 主办  
上海市振动工程学会

# 目 次

一种基于小波包样本熵和流形学习的故障特征提取模型 ..... 向 丹, 葛 爽 (1)

砌体强度对自建民居抗震性能的影响分析 ..... 俞瑞芳, 谢志强, 彭凌云, 等 (6)

柱壳结构抗冲击性能能量纲分析与数值模拟研究 ..... 赵 凯, 高光发, 王肖钧 (12)

大型液压离心振动台的耦合特性分析 ..... 罗中宝, 杨志东, 丛大成, 等 (17)

似 P 范数特征值分解高分辨率声源定位识别方法研究 ..... 刘月婵, 何元安, 商德江, 等 (26)

近距空爆下复合抗爆舱壁变形破坏模式试验研究 ..... 张成亮, 朱 锡, 侯海量, 等 (33)

爆破地震波能量分布研究 ..... 徐振洋, 杨 军, 陈占扬, 等 (38)

离心泵蜗壳内非定常流动特性 ..... 王松林, 谭 磊, 王玉川 (43)

冲击载荷作用下岩石 I 型裂纹动态断裂试验研究 ..... 宋义敏, 杨小彬, 金 璐, 等 (49)

基于轴承故障信号特征的自适应冲击字典匹配追踪方法及应用 ..... 崔玲丽, 王 婧, 郭 娜, 等 (54)

汽轮机可倾瓦颤振引发低频振荡问题研究 ..... 张 楚, 高庆水, 邓小文 (61)

气流偏角对不同形状复合材料壁板热颤振特性的影响 ..... 高 扬, 杨智春, 谷迎松 (65)

考虑氯离子腐蚀作用的近海桥梁结构全寿命抗震性能评价 ..... 李 超, 李宏男 (70)

基于结构整体损伤指标的钢框架地震易损性研究 ..... 徐 强, 郑山锁, 韩言召, 等 (78)

数值重构研究重力坝动力模型试验可靠性 ..... 王铭明, 陈健云, 范书立 (83)

基于角域四阶累积量切片谱的柴油机连杆轴承故障特征提取 ..... 沈 虹, 赵红东, 梅检民, 等 (90)

某型火箭炮多形态耦合发射动力学建模与仿真分析 ..... 冯 勇, 徐振钦 (95)

随机失谐周期压电 Timoshenko 梁的波动局部化研究 ..... 丁 兰, 尹 涛, 朱宏平 (100)

CFST 边框内藏桁架高剪力墙抗震试验与有限元分析 ..... 杨亚彬, 曹万林 (107)

粘滞阻尼减震结构最优极点配置与随机振动分析 ..... 杜永峰, 李春锋, 李 慧 (114)

基于排列熵和 VPMCD 的滚动轴承故障诊断方法 ..... 程军圣, 马兴伟, 杨 宇 (119)

考虑火灾全过程的钢管混凝土平面框架受力性能分析·····	王景玄, 王文达 (124)
含间隙曲柄滑块系统动力响应的随机性分析·····	赵 宽, 陈建军, 曹鸿钧, 等 (130)
加速度对涡轮增压器球轴承-转子系统动力学特性的影响·····	黄 若, 张威力, 姜雅力, 等 (136)
汽车发动机启动声品质评价与分析·····	徐中明, 夏小均, 贺岩松, 等 (142)
三维耦合 Timoshenko 梁功率流主动控制研究 ·····	王有懿, 赵 阳, 马文来 (148)
基于自适应响应面法的输电塔线体系腐蚀疲劳可靠度研究 ·····	张春涛, 范文亮, 鲁 黎, 等 (155)
人字齿轮减速器振动噪声影响因素仿真分析研究·····	张金梅, 刘 更, 周建星, 等 (161)
基于奇异值分解和相关峭度的滚动轴承故障诊断方法研究 ·····	张永祥, 王孝霖, 张 帅, 等 (167)
冲击荷载作用下混凝土缺陷模型细观损伤演化定量分析·····	覃 源, 柴军瑞, 党发宁 (172)
敷设手性覆盖层加筋梁低频振动和声辐射特性·····	朱大巍, 黄修长, 华宏星, 等 (178)
一种混凝土泵车臂架多姿态固有频率的数值算法·····	张赵威, 吴运新, 任 武 (184)
铁路钢-混凝土结合梁动力系数试验研究及参数分析 ·····	李运生, 李 帅, 张彦玲 (189)
新型准零刚度隔振系统的设计与研究·····	孟令帅, 孙景工, 牛 福, 等 (195)
填充墙 MTMD 耗能钢框架结构振动台试验研究·····	袁 康, 何明胜, 李英民 (200)
一种准零刚度隔振器的特性分析与实验研究 ·····	徐道临, 张月英, 周加喜, 等 (208)



## 本期广告索引

### 彩色广告

- 封二 Brüel & Kjær 中国
- 封三 德维创中国有限公司
- 封四 米勒贝姆振动与声学系统(北京)有限公司
- 前插1 杭州亿恒科技有限公司
- 前插2 杭州腾振科技有限公司
- 前插3 长沙鹏翔电子科技有限公司
- 前插4 比利时 LMS 北京代表处

### 单色、彩色广告

- 后插1 武汉优泰电子技术有限公司
- 后插2 南京安正软件工程有限公司
- 后插3 南京安正软件工程有限公司
- 后插4 北京东方振动和噪声技术研究所
- 后插5 扬州英迈克测控技术有限公司
- 后插6 上海君协光电科技发展有限公司
- 后插7 上海君协光电科技发展有限公司

# CONTENTS

- A model of fault feature extraction based on wavelet packet sample entropy and manifold learning  
 ..... XIANG Dan, GE Shuang (1)
- Effect of masonry strength on aseismic performance of self-built dwellings  
 ..... YU Rui-fang, XIE Zhi-qiang, PENG Ling-yun, et al (6)
- Dimensional analysis and numerical simulation for impact-resistance performance of cylindrical shell structures  
 ..... ZHAO Kai, GAO Guang-fa, WANG Xiao-jun (12)
- Coupling characteristic analysis of a large hydraulic centrifugal shaker  
 ..... LUO Zhong-bao, YANG Zhi-dong, CONG Da-cheng, et al (17)
- High-resolution locating and identification method of sound sources based on  $L_p$  norm eigenvalue decomposition  
 ..... LIU Yue-chan, HE Yuan-an, SHANG De-jiang, et al (26)
- Model tests for deformation and destruction modes of a blast-resistant bulkhead under near distance explosion  
 ..... ZHANG Cheng-liang, ZHU Xi, HOU Hai-liang, et al (33)
- Blasting seismic waves energy distribution based on EEMD ..... XU Zhen-yang, YANG Jun, CHEN Zhan-yang, et al (38)
- Characteristics of unsteady flow in a centrifugal pump volute ..... WANG Song-lin, TAN Lei, WANG Yu-chuan (43)
- Dynamic fracture test for rock I-type crack under impact load ... SONG Yi-min, YANG Xiao-bin, JIN Lu, et al (49)
- Bearing fault diagnosis based on self-adaptive impulse dictionary matching pursuit  
 ..... CUI Ling-li, WANG Jing, WU Na, et al (54)
- Subsynchronous vibration caused by pad fluttering of turbine tilting-pad bearings  
 ..... ZHANG Chu, GAO Qing-shui, DENG Xiao-wen (61)
- Effects of flow yaw angle on thermal flutter characteristics of composite panels with different shapes  
 ..... GAO Yang, YANG Zhi-chun, GU Ying-song (65)
- Life-cycle aseismic performance evaluation of offshore bridge structures considering chloride ions corrosion effect  
 ..... LI Chao, LI Hong-Nan (70)
- Steel frame seismic vulnerability based on a global structural damage index  
 ..... XU Qiang, ZHENG Shan-suo, HAN Yan-zhao, et al (78)
- Reliability of dynamic model test using numerical reconstruction for a gravity dam  
 ..... WANG Ming-ming, CHEN Jian-yun, FAN Shu-li (83)
- Fault feature extraction of connecting rod bearings of a diesel engine based on angle domain fourth-order cumulant  
 slice spectrum ..... SHEN Hong, ZHAO Hong-dong, MEI Jian-min, et al (90)
- Launch dynamic modeling and simulation analysis of a multi-rocket launch system With rigid-flexible coupled and rigid  
 body-liquid coupled methods ..... FENG Yong, XU Zhen-qin (95)
- Wave localization in a randomly disordered periodic piezoelectric Timoshenko beam  
 ..... DING Lan, YIN Tao, ZHU Hong-ping (100)
- Seismic Testing and Finite Element Analysis of Shear Wall with CFST Columns and Concealed Trusses  
 ..... YANG Ya-bin, CAO Wan-lin (107)

- 
- Optimal pole disposal and random vibration analysis of structures with supplemental viscous damping  
..... DU Yong-feng, LI Chun-feng, LI Hui (114)
- Rolling bearing fault diagnosis method based on permutation entropy and VPMCD  
..... CHENG Jun-sheng, MA Xing-wei, YANG Yu (119)
- Mechanical behavior analysis of a planar frame with concrete-filled steel tubular columns exposed to overall stage fire  
..... WANG Jing-xuan, WANG Wen-da (124)
- Randomness analysis of dynamic responses of a slider-crank system with clearances  
..... ZHAO Kuan, CHEN Jian-jun, CAO Hong-jun, et al (130)
- Influences of acceleration on dynamic characteristics of a turbocharger's ball bearing-rotor system  
..... HUANG Ruo, ZHANG Wei-li, JIANG Ya-li, et al (136)
- Analysis and evaluation of car engine starting sound quality ..... XU Zhong-ming, XIA Xiao-jun, HE Yan-song, et al (142)
- Active control of power flow in a three dimensional coupled Timoshenko beam  
..... WANG You-yi, ZHAO Yang, MA Wen-lai (148)
- Corrosion fatigue reliability analysis of a transmission tower-line coupled system with adaptive response surface method  
..... ZHANG Chun-tao, FAN Wen-liang, LU Li, et al (155)
- Simulation analysis of influencing factors on vibration and noise of a herringbone gear speed-reducer  
..... ZHANG Jin-mei, LIU Geng, ZHOU Jian-xing, et al (161)
- Rolling element bearing fault diagnosis based on singular value decomposition and correlated kurtosis  
..... ZHANG Yong-xiang, WANG Xiao-lin, ZHANG Shuai, et al (167)
- Quantitative analysis for mesoscopic damage evolution of a concrete model containing defects under impact load  
..... QIN Yuan, CHAI Jun-rui, DANG Fa-ning (172)
- Vibration and acoustic radiation characteristics of a stiffened beam with a chiral covering layer  
..... ZHU Da-wei, HUANG Xiu-chang, HUA Hong-xing, et al (178)
- A numerical algorithm for mobile concrete truck boom's natural frequencies in multi-posture  
..... ZHANG Zhao-wei, WU Yun-xin, REN Wu (184)
- Tests and parametric analysis for dynamic factor of railway steel-concrete composite beams  
..... LI Yun-sheng, LI Shuai, ZHANG Yan-ling (189)
- Design and Analysis of a novel quasi-zero stiffness vibration isolation system  
..... MENG Ling-shuai, SUN Jing-gong, NIU Fu, et al (195)
- Shaking table tests for energy-dissipation steel frame structures with infilled wall MTMD  
..... YUAN Kang, HE Ming-sheng, LI Ying-min (200)
- Characteristic analysis and experimental investigation for a vibration isolator with quasi-zero stiffness  
..... XU Dao-lin, ZHANG Yue-ying, ZHOU Jia-xi, et al (208)
- 

## **JOURNAL OF VIBRATION AND SHOCK**

**Vol. 33 No. 11 JUNE 2014**

**Editorial Office: 1954 Huashan Rd. Shanghai, 200030, China**

**Issuer Abroad: China National Publishing Industry Trading Corporation**

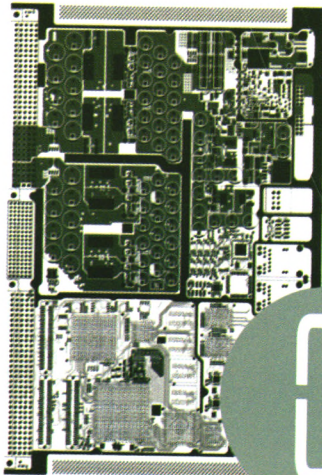
**( Post-Office Box No. 728, Beijing, China )**

---

INTRODUCING

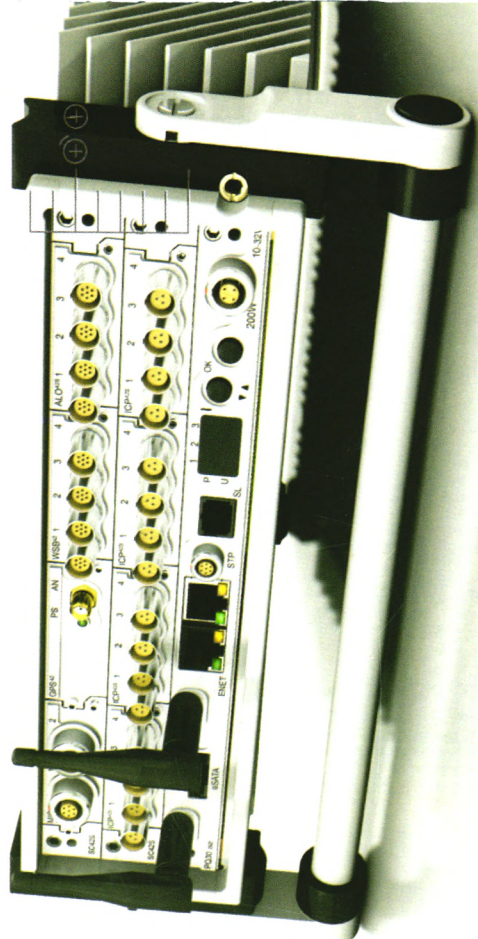
THE NEW GENERATION OF PAK HARDWARE CONTROLLERS

HIGHER CHANNELS AND SAMPLING RATES | STANDALONE SYSTEMS ADDRESSING SIMPLE APPLICATIONS | NEW WAYS OF WORKING



G2

THINK  
STORE  
CONNECT



二代控制系统性能

- ◎ 更强的核心处理器，更高缓存，支持更多通道、更高采样率的数据采集
- ◎ 更高的以太网数据传输速率
- ◎ 本地数据存储功能（eSATA），脱离笔记本媒介
- ◎ WLAN（IEEE 802.11n）技术，提供更稳定、更高速率的无线数据传输
- ◎ 更有效、更安静的系统供电

MÜLLER-BBM  
VibroAkustik Systeme

米勒贝姆振动与声学系统（北京）有限公司  
北京市西城区裕民路18号 北环中心1002室  
电话：010-51285118，传真：010-82251626

E-mail: info@MuellerBBM-vas.cn  
www.MuellerBBM-vas.cn  
www.MuellerBBM-vas.com

