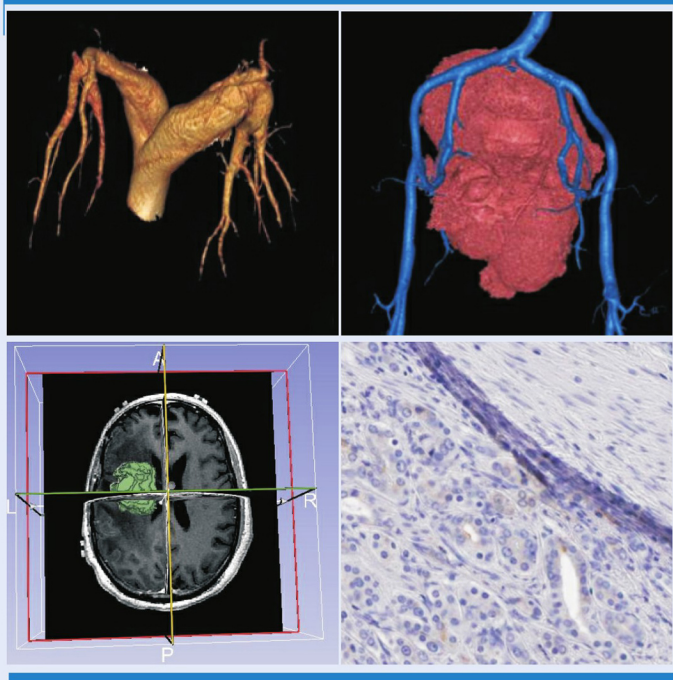


中国CT和MRI杂志[®]

ZHONGGUO CT HE MRI ZAZHI

CHINESE JOURNAL OF CT AND MRI



- 4 全脑灌注CTP联合头颈CTA诊断早期AIS的价值观察*
- 21 三种不同强化亚型幕上胶质母细胞瘤影像学表现*
- 32 自发性脑出血患者CT征象预测血肿增大的临床价值*
- 56 不同年龄段小儿支原体肺炎CT影像特征分析*
- 66 MSCT与X线诊断患者气胸的价值观察*
- 91 能谱CT成像在评估肝细胞癌微血管侵犯中的价值*
- 117 凶险性前置胎盘MRI表现及诊断意义
- 145 DR及DTS在寰枢关节半脱位诊断及分型中的……
- 164 系统性红斑狼疮并发症状性骨梗死的MRI表现*
- 170 阿尔茨海默病患者嗅觉相关磁共振研究进展*
- 187 腹膜后多发平滑肌瘤并玻璃样变性1例报告



万方数据

ISSN 1672-5131



CHINESE JOURNAL OF CT AND MRI
JAN. 2024 VOL.22 第一期
总第一百七十一期

主 管

中华人民共和国教育部

主 办

北京大学深圳临床医学院

北京大学第一医院

协 办

深圳市医信文化投资有限公司

深圳会慧门诊部

编 辑

中国CT和MRI杂志编辑委员会

名誉总编辑

韩金祥 滕皋军

总编辑

王成林

执行总编辑

王俊卿

副总编辑

卢光明 王振常 程敬亮 贾文霄

余永强 王毅翔 陈芸 刘刚

社 长

王成林

副社长

周增希

出 版

中国CT和MRI杂志社

518026, 深圳市福田区金田路4018号安联大厦B区5楼

电话: (0755) 83695203; 13510331556

传真: (0755) 83695203

E-mail: ctMRI@vip.163.com

网站: <http://www.diagnoschina.com>

广告代理

深圳市医信文化投资有限公司

518026, 深圳市福田区金田路4018号安联大厦B区5楼

电话: (0755) 83695203; 13510331556

传真: (0755) 83695203

广告经营许可证

440300200009

印 刷

深圳市冠杰包装印刷有限公司

发 行

国内: 深圳报刊发行局

国外: 中国国际图书贸易总公司

(北京399信箱, 100044) 代号C8175

发行范围

国内外发行

订 购

全国各地邮电局

邮发代号: 46-276

邮 购

中国CT和MRI杂志社出版发行部

电话: (0755) 83695203

传真: (0755) 83695203

E-mail: ctMRI@vip.163.com

定 价

每期20元, 全年240元

国内统一连续出版物号

ISSN 1672-5131

CN 44-1592/R

版权归中国CT和MRI杂志社所有

除非特别声明, 本刊刊出的所有文章不代表

中国CT和MRI杂志社和本刊编委会的观点

本刊如有印装质量问题, 请向中国CT和MRI

杂志社出版发行部调换

目 次

论著·头颈部

NODDI用于不同亚型帕金森患者脑微结构的定量研究*

..... 唐 斌, 贾文霄, 丁 爽, 等 (1)

全脑灌注CTP联合头颈CTA诊断早期AIS的价值观察*

..... 段 森, 陈大有, 郭泽春, 等 (4)

脑静脉窦血栓形成患者临床及MRI/MRV特征与抗凝治疗预后的相关性分析*

..... 叶 伟, 张 超 (7)

基于磁共振 3D-T₁WI评估肺癌化疗患者脑形态学改变的研究*

..... 陈文倩, 韩小伟, 荣 萍, 等 (11)

低剂量双源CTP评估急性缺血性脑卒中患者脑组织灌注缺损的价值及对血管内再通治疗的指
导意义* 周 戈, 李培华, 杨才能, 等 (15)

老年认知功能障碍与高尿酸血症及脑灰质结构改变的关系研究*

..... 王 晓, 杨 牧, 余雯晴, 等 (18)

三种不同强化亚型幕上胶质母细胞瘤影像学表现*

..... 陈鹏宇, 刘亚东, 于 静, 等 (21)

IDH1突变型胶质母细胞瘤磁共振纹理特征的研究*

..... 王汝佳, 孙静华, 侯玉微, 等 (23)

DCE-MRI、IVIM-DWI、MRS技术在脑胶质瘤术后复发与假性进展鉴别诊断中的应用价值*

..... 杜竑兵, 张福州, 徐 彬 (25)

3D-DSA与Dyna-CT在颅内支架置入术中的临床应用研究*

..... 周新华, 陈良义, 翁磊华, 等 (28)

经CT扫描探讨正常喉的活动度的研究* 梁 健, 申 静, 李 雯, 等 (31)

自发性脑出血患者CT征象预测血肿增大的临床价值*

..... 马 鹏, 冯 森, 李冬冬, 等 (35)

鼻咽癌颅底骨转移瘤SPECT/CT影像特征变化及诊断价值分析*

..... 官荣光, 雷生红, 钟钰玲, 等 (38)

鼻丘气房形态特征及额窦口参数在慢性额窦炎中的相关性研究

..... 李文意, 余文发 (41)

鼻咽癌患者¹⁸F-FDG PET/CT代谢参数与临床病理特征的关系及对局部复发的预测价值*

..... 刘炎富, 陆菊青, 林 霄, 等 (45)

术前常规MRI+颈椎矢状面参数预测神经根型颈椎病术后病情转归价值及对手术治疗指导意义
分析* 吴 迪, 季雨晴, 秦绪沛 (49)

论著·胸部

大型方舱医院Omicron变异株普通型COVID-19患者CT征象分析

..... 余 美, 屈晓艳, 岳 翠, 等 (53)

不同年龄段小儿支原体肺炎CT影像特征分析* 钟学兰, 张 超 (56)

¹⁸F-FDG PET/CT影像组学对肺腺癌KRAS突变的预测价值 于 丽, 朱璇璇, 魏 宁 (59)

基于能谱CT低流速低对比剂在肺动脉CTA图像质量的研究*

..... 周大伟, 赵英明, 李欣欣, 等 (63)

MSCT与X线诊断患者气胸的价值观察* 李宏荣, 谢晶美, 王永宏 (66)

双低剂量肺动脉血管造影(CTPA)成像技术在诊断肺动脉栓塞的可行性研究

..... 汪劭川, 曾一红, 孙政文, 等 (68)

基于CT平扫影像组学特征在预测胸腺上皮性肿瘤WHO简化病理分型中的价值

..... 陈 杰, 洪 悦, 王 艳 (71)

校对编辑 孙晓晴 姚丽娜 谢诗婷 韩敏求 排版编辑 黄 莹 张鸿燊

CT血管造影联合血清尿素、胱抑素C、甘油三酯葡萄糖乘积指数对冠心病患者冠脉狭窄程度的诊断价值和斑块性质的关系*

.....	陈 娇, 明贤芳, 吴永波 (74)
心房颤动患者导管消融术不同管电流CT扫描方案对患者辐射剂量影响研究*	海洪勃, 朴成浩, 于冬梅, 等 (78)
三种不同指数模型对乳腺良恶性病变鉴别诊断效能的比较: 一项基于多b值MUSE-DWI的研究	袁晓凡, 李海歌, 朱建国, 等 (81)
采用B1-corrected variable-flip-angle (VFA) 的定量动态增强MRI在乳腺良恶性病变的研究	蒋 辉, 曲金荣, 宋 颖, 等 (85)
联合ADC组学标签和激素受体预测乳腺癌新辅助化疗病理完全化解*	李小苑, 杨志企, 陈湘光, 等 (88)

论著·腹部

能谱CT成像在评估肝细胞癌微血管侵犯中的价值*	李大铭, 张玉婷, 马小梅 (91)
AFP阴性肝硬化肝癌MRI与CEUS表现及诊断价值分析*	潘家琦, 李 强, 马献武, 等 (94)
探讨术前基于MRI纹理及影像融合模型预测肝癌微血管侵犯*	薛明团, 贾丽琴, 杜建波, 等 (97)
IVIM联合DKI成像技术在肝纤维化分级中的应用价值*	郭 景, 孙 勇, 杨 敏, 等 (100)
IVIM-DWI及多层螺旋CT与肝细胞肝癌微血管侵犯的相关性分析*	何崇保, 庞 勇, 唐 煌 (103)
肾乏脂型血管平滑肌脂肪瘤与非透明细胞肾癌的CT鉴别诊断*	林丽丹, 胡雅诺, 邱思凡, 等 (107)
多层螺旋CT动态增强扫描在宫颈癌淋巴结转移的诊断价值及漏诊的原因分析	李洋洋 (110)
磁共振联合血清KMT2D检测在膀胱癌诊断中的临床意义	朱丽娜, 魏翔宇, 耿 坚 (114)
凶险性前置胎盘MRI表现及诊断意义	张 澍, 王春延, 忽 平 (117)
基于多参数磁共振放射组学预测临床显著性前列腺癌	沈茜樱, 顾红梅 (120)
¹⁸ F-FDG PET/CT显像联合PSMA检测对前列腺癌诊断的应用价值	徐 飞, 彭向前, 徐天才, 等 (124)
探讨CT联合HFUS对小儿肠套叠的诊断研究*	田 慧, 李成龙, 李钱程, 等 (127)
术前应用Philips CT成像特征预测胃肠道间质瘤高ki-67增殖指数的研究*	贾 浩, 范志刚, 朱 彬, 等 (130)
下段直肠癌直肠系膜筋膜受累CT影像表现及其与术后局部复发的相关性研究*	邵楠楠, 王立峰, 张原理, 等 (133)
磁共振弥散加权成像ADC值联合血清肿瘤标志物对结肠癌患者术后复发转移的预测价值*	徐锰超, 谢玉玺, 邵元伟 (137)
感兴趣区范围对MRI影像组学模型预测ICC分化程度的影响*	王 晴, 马喜娟, 钱贤灵, 等 (141)

论著·骨骼肌肉

DR及DTS在寰枢关节半脱位诊断及分型中的价值研究*	曾 桔, 陈君蓉, 李向阳 (145)
绝经后女性急性骨质疏松性骨折与腰部椎旁肌肉CT定量的相关性*	李雨蒙, 朱文玲, 谢智雯, 等 (149)
3.0T MRI对双膝关节骨性关节炎伴内侧半月板突出的应用价值研究*	王欧成, 鲁新宇, 张刘璐, 等 (152)
低剂量双能量CT及MRI诊断前交叉韧带损伤的价值观察*	唐传姬, 陈思敏, 李 亮, 等 (155)
基于表观扩散系数影像组学对围绝经期女性骨质疏松诊断的初步探讨*	罗 艳, 陶敏芳 (158)
能谱CT物质分离技术对膝关节骨性关节炎髌下脂肪垫物质的相关性研究*	张 敏, 谭 辉, 樊秋菊, 等 (162)
系统性红斑狼疮并发症状性骨梗死的MRI表现*	张淑娴, 安玉美, 沈婷婷, 等 (164)
MSCT定量参数对骨巨细胞瘤定性的诊断价值及与临床预后的关系*	武 粟, 王仁贵 (167)

综述与观点

阿尔茨海默病患者嗅觉相关磁共振研究进展*	朱雅静, 陆加明, 张 鑫, 等 (170)
心脏CT血管造影在左心耳封堵术后随访中的研究进展*	李天宇, 崔明锐, 张 继 (173)
磁共振及超声瞬时弹性成像对代谢相关脂肪性肝病定量评估的研究进展*	王妙艳, 朱立红, 华晨辰, 等 (176)
TACE联合射频消融术后肝癌残留或复发的影像学研究进展*	朱 楠, 张甜甜, 周春泽 (179)

短篇

儿童多中心浆细胞型Castleman病1例报告	黄科峰, 金文义, 周 怡, 等 (182)
以钙化表现为主腹膜后脂肪肉瘤影像学表现及文献复习	冷媛媛, 黄燕涛, 吕敏丽, 等 (183)
CT及MRI诊断盆腔巨大神经鞘瘤1例报告	曾盛熊, 王 磊, 李 勇 (185)
腹膜后多发平滑肌瘤并玻璃样变性1例报告	周 刚, 杨 丽, 黄水仙, 等 (187)

*表示基金文章

自2020年10月起, 本刊正式启用线上采编系统, 作者在线投稿步骤如下: (1) 登录网址www.diagnoschina.com, 点击“投稿”; (2) 填写注册信息, 获取用户名及密码; (3) 登录并查看投稿须知、论文模版及版权, 根据指引进行投稿。

Responsible Institution

Ministry of Education, the People's Republic of China

Sponsor

Peking University Shenzhen Clinic Medical College
First Medical College of Peking University

Co-organizers

Shenzhen Yixin Culture Investment Co.,Ltd.
Shenzhen Huihui Clinic

Editing

Editorial Department of Chinese Journal of CT and MRI

Honorary Chief Editor

Han Jinxiang(韩金祥) Teng Gaojun(滕皋军)

Editor-in-chief

Wang Chenglin(王成林)

Executive Editor

Wang Junqing(王俊卿)

Deputy Editor-in-chief

Lu Guangming(卢光明) Wang Zhenchang(王振常)
Cheng Jingliang(程敬亮) Jia Wenxiao(贾文霄)
Yu Yongqiang(余永强) Wang Yixiang(王毅翔)
Chen Yun(陈芸) Liu Gang(刘刚)

President

Wang Chenglin(王成林)

The Vice President

Zhou Zengxi(周增希)

Publishing

Editorial Department of Chinese Journal of CT and MRI
5th Floor, Area B, Allianz Building, 4018 Jintian Road,
Futian District, Shenzhen 518026
Tel: (0755)83695203
Fax: (0755)83695203
E-mail: ctmri@vip.163.com
Website: http://www.diagnoschina.com

Printing

Guanjie Packaging Printing Co., Ltd, Shenzhen
Overseas Distributor
China International Book Trading Corporation
P.O.Box399, Beijing, China Code No.C8175

Mail-Order

Publishing & Circulation Section, Publishing House
Editorial Department of Chinese Journal of CT and MRI
Tel: (0755)83695203; 13510331556
Fax: (0755)83695203
E-mail: ctmri@vip.163.com

CSSN

ISSN 1672-5131
CN 44-1592/R

Copyright Notice

All articles published represent the opinions of the authors, do not reflect the official policy of the editorial department of Chinese Journal of CT and MRI & the editorial board, unless this is clearly specified

Tips

Articles for magnetic resonance studies group of radiological society of China's professional journals

CONTENTS

HEAD AND NECK IMAGING

- Quantitative Study of NODDI in the Subtle Structure of Brain in Patients with Different Subtypes of Parkinson's Disease*TANG Bin, JIA Wen-xiao, DING Shuang, et al.(1)
Value of Whole Brain CTP Combined with Head and Neck CTA in the Diagnosis of Early AIS*DUAN Miao, CHEN Da-you, GUO Ze-chun, et al.(4)
The Correlation Analysis of Clinical and MRI/MRV Characteristics with Anticoagulant Therapy Prognosis in Patients with Cerebral Venous Sinus Thrombosis*YE Wei, ZHANG Chao.(7)
Evaluation of Brain Morphologic Changes in Lung Cancer Patients after Chemotherapy Based on MRI 3D-T₁WI*CHEN Wen-qian, HAN Xiao-wei, RONG Ping, et al.(11)
The Value of Low-dose Dual-source CTP in Assessing Perfusion Deficits in Brain Tissue of Patients with Acute Ischemic Stroke and Its Guidance for Endovascular Recanalization Therapy*ZHOU Ge, LI Pei-hua, YANG Cai-neng, et al.(15)
Study on the Relationship between Cognitive Dysfunction and Hyperuricemia and Structural Changes of Gray Matter in the Elderly*WANG Xiao, YANG Mu, YU Wen-qing, et al.(18)
Imaging Features of Three Different Enhancement Subtypes of Supratentorial Glioblastoma*CHEN Peng-yu, LIU Ya-dong, YU Jing, et al.(21)
Textural Features on Magnetic Resonance Imaging in IDH1 Mutant Glioblastoma*WANG Ru-jia, SUN Jing-hua, HOU Yu-wei, et al.(23)
Application value of DCE-MRI, IVIM-DWI and MRS in the Differential Diagnosis of Postoperative Recurrence and Pseudoprogression of Glioma*DU Hong-bing, ZHANG Fu-zhou, XU Bin.(25)
Clinical Application of 3D-DSA and Dyna-CT in Intracranial Stent Placement*ZHOU Xin-hua, CHEN Liang-yi, WENG Lei-hua, et al.(28)
Study of Normal Laryngeal Mobility by CT Scanning*LIANG Jian, SHEN Jing, LI Wen, et al.(31)
Clinical Value of CT Signs on Predicting Hematoma Enlargement in Patients with Spontaneous Intracerebral Hemorrhage*MA Peng, FENG Sen, LI Dong-dong, et al.(35)
Analysis of the Changes in SPECT/CT Imaging Features and Diagnostic Value of Skull Base Bone Metastasis in Nasopharyngeal Carcinoma*GUAN Rong-guang, LEI Sheng-hong, ZHONG Yu-ling, et al.(38)
Study on the Correlation between Morphological Characteristics of the Agger Nasi Cell and Frontal Sinus Orifice Parameters in Chronic Frontal SinusitisLI Wen-yi, YU Wen-fa.(41)
Relationship between ¹⁸F-FDG PET/CT Metabolic Parameters and Clinicopathological Features in Patients with Nasopharyngeal Carcinoma and Their Predictive Value for Local Recurrence*LIU Yan-fu, LU Ju-qing, LIN Xiao, et al.(45)
Preoperative Conventional MRI+ Cervical Sagittal Plane Parameters in Predicting the Prognosis of Cervical Radiculopathy after Surgery and Analysis of Its Guiding Significance for Surgical Treatment*WU Di, JI Yu-qing, QIN Xu-pei.(49)

CHEST IMAGING

- CT Features of Omicron Variant Moderate COVID-19 Patients in Large Square HospitalYU Mei, QU Xiao-yan, YUE Cui, et al.(53)
Characteristics of CT images of Mycoplasma Pneumonia in Children at Different Age Groups*ZHONG Xue-lan, ZHANG Chao.(56)
Predictive Value of ¹⁸F-FDG PET/CT Imaging for KRAS Mutation in Lung AdenocarcinomaYU Li, ZHU Xuan-xuan, WEI Ning.(59)
Study on the Image Quality of Low Flow Rate and Low Contrast Agent in the Pulmonary Artery Based on Energy Spectrum CT*ZHOU Da-wei, ZHAO Ying-ming, LI Xin-xin, et al.(63)
Value of MSCT and X-ray in the Diagnosis of Pneumothorax*LI Hong-rong, XIE Jing-Mei, WANG Yong-hong.(66)
Feasibility Study of Double Low Dose Pulmonary Angiography (CTPA) Imaging in Diagnosis of Pulmonary EmbolismWANG Shao-chuan, ZENG Yi-hong, SUN Zheng-wen, et al.(68)
Value of Simplified Pathological Classification of Thymus Epithelial Tumors Based on Plain CT Imaging FeaturesCHEN Jie, HONG Yue, WANG Yan.(71)
The Diagnostic Value of CT Angiography Combine with Serum Urea, Cystatin C, and Triglyceride Glucose Product Index in the Degree Of Coronary Artery Stenosis and the Relationship between Plaque Properties in Patients with Coronary Heart Disease*CHEN Jiao, MING Xian-fang, WU Yong-bo.(74)
Study on the influence of Different Tube Current CT Scanning Protocols on Radiation Dose in Patients with Atrial Fibrillation*HAI Hong-bo, PIAO Cheng-hao, YU Dong-mei, et al.(78)
Comparison of the Diagnostic Efficacy of Three Different Exponential Models in Discriminating Malignant from Benign Breast Lesions: A Study Based on Multi-b-value MUSE-DWIYUAN Xiao-fan, LI Hai-ge, ZHU Jian-guo, et al.(81)

BI Corrected Variable Flip Angle (VFA) Sequence and Quantitative Dynamic Enhanced MRI in Benign and Malignant Breast LesionsJIANG Hui, QU Jin-rong, SONG Ying, et al.(85)
 Combined Apparent Diffusion Coefficient Maps Radiomics Signature and Hormone Receptors Predict Pathological Complete Response of Neoadjuvant Chemotherapy in Breast Cancer*LI Xiao-yuan, YANG Zhi-qi, CHEN Xiang-guang, et al.(88)

ABDOMEN IMAGING

Value of Energy Spectrum CT Imaging in Evaluating Microvascular Invasion of Hepatocellular Carcinoma*LI Da-ming, ZHANG Yu-ting, MA Xiao-mei.(91)
 MRI and CEUS Findings and Diagnostic Value of Negative AFP Hepatocellular Carcinoma*PAN Jia-qi, LI Qiang, MA Xian-wu, et al.(94)
 To Investigate the Prediction of Microvascular Invasion of Liver Cancer Based on MRI Texture and Image Fusion Model*XUE Ming-tuan, JIA Li-qin, DU Jian-bo, et al.(97)
 The Application Value of IVIM Combined with DKI Imaging Technology in Liver Fibrosis Staging*GUO Jing, SUN Yong, YANG Min, et al.(100)
 Correlation Analysis of IVIM-DWI and Multilayer Spiral CT with Microvascular Invasion in Hepatocellular Hepatocellular Carcinoma*HE Chong-bao, PANG Yong, TANG Huang.(103)
 CT Differential Diagnosis of Fat-Poor Renal Angiomyolipoma and Non-clear Cell Renal Cell Carcinoma*LIN Li-dan, HU Ya-nuo, QIU Si-fan, et al.(107)
 Diagnostic Value of Dynamic Enhanced Multi-slice Spiral CT in Lymph Node Metastasis of Cervical Cancer and Analysis of the Causes of Missed DiagnosisLI Yang-yang.(110)
 Clinical Significance of Magnetic Resonance Combined with Serum KMT2D Detection in the Diagnosis of Bladder CancerZHU Li-na, WEI Xiang-yu, GENG Jian.(114)
 MRI Manifestations and Diagnosis Significance of Pernicious Placenta PreviaZHANG Shu, WANG Chun-yan, HU Ping.(117)
 Models Based on Multiple-parameters Magnetic Resonance Imaging Radiomics to Predict Prostate Cancer of Clinically SignificantSHEN Xi-ying, GU Hong-mei.(120)
 Application Value of ¹⁸F-FDG PET/CT Imaging Combined with PSMA Detection in the Diagnosis of Prostate CancerXU Fei, PENG Xiang-qian, XU Tian-cai, et al.(124)
 Analysis of CT Combined with High-frequency Ultrasound in Diagnosis and Reduction of Intussusception in Children*TIAN Hui, LI Cheng-long, LI Qian-cheng, et al.(127)
 Application Value of Preoperative CT Features in Predicting High Ki-67 Proliferation Index of Gastrointestinal Stromal Tumors*JIA Hao, FAN Zhi-gang, ZHU Bin, et al.(130)
 Value of 1.5T MRI Multi-parameter Imaging in Evaluating the Curative Effect of HIFU and Determining Prognosis in Uterine Fibroid*SHAO Nan-nan, WANG Li-feng, ZHANG Yuan-li, et al.(133)
 Predictive Value of MR Diffusion-weighted Imaging ADC Values Combined with Serum Tumor Markers for Postoperative Recurrence and Metastasis in Patients with Colorectal Cancer*XU Meng-chao, XIE Yu-xi, SHAO Yuan-wei.(137)
 The Impact of the Region of Interest on the Prediction of the Degree of ICC Differentiation in MRI Radiomics Models*WANG Qing, MA Xi-juan, QIAN Xian-ling, et al.(141)

MUSCULOSKELETAL IMAGING

The Value of DR and DTS in the Diagnosis and Classification of Atlantoaxial Subluxation*ZENG Ju, CHEN Jun-rong, LI Xiang-yang.(145)
 Correlation between CT Measurement Parameters of Lumbar Paravertebral Muscles in Postmenopausal Acute Osteoporotic Spinal Compression Fractures*LI Yu-meng, ZHU Wen-ling, XIE Zhi-wen, et al.(149)
 Study of the Value Of 3.0T Magnetic Resonance Imaging in Bilateral Osteoarthritis Of the Knee with Medial Meniscal Protrusion*WANG Ou-cheng, LU Xin-yu, ZHANG Liu-lu, et al.(152)
 Diagnostic Value of Low-dose Dual-energy CT and MRI in Anterior Cruciate Ligament Injury*TANG Chuan-ji, CHEN Si-min, LI Liang, et al.(155)
 A Preliminary Study on the Diagnosis of Osteoporosis in Peri-menopausal Women Based on Apparent Diffusion Coefficient Imaging*LUO Yan, TAO Min-fang.(158)
 Characterization of Infrapatellar Fat Pad in the Keen Osteoarthritis Patients Using Dual-energy Spectral CT Imaging*ZHANG Min, TAN Hui, FAN Qiu-Ju, et al.(162)
 MRI Study of the Symptomatic Bone Infarction with Systemic Lupus Erythematosus*ZHANG Shu-xian, AN Yu-mei, SHEN Ting-ting, et al.(164)
 Diagnostic Value of Quantitative MSCT Parameters for the Characterization of Giant Cell Tumor of Bone and the Relationship with Clinical Prognosis*WU Su, WANG Ren-gui.(167)

REVIEWS AND PERSPECTIVES

Advancements in Olfactory Related Magnetic Resonance Imaging in Patients with Alzheimer's Disease*ZHU Ya-jing, LU Jia-ming, ZHANG Xin, et al.(170)
 Research Progress of CT Cardiac Angiography in Follow-up after Left Atrial Appendage Closure*LI Tian-yu, CUI Ming-rui, ZHANG Ji.(173)
 Research Progress of Magnetic Resonance and Ultrasound Transient Elastography in the Quantitative Assessment of Metabolic-Related Fatty Liver Disease*WANG Miao-yan, ZHU Li-hong, HUA Chen-chen, et al.(176)
 Progress of Imaging Assessment in Residual or Recurrent Lesions after Transcatheter Arterial Chemoembolization Combined with Radiofrequency Ablation*ZHU Nan, ZHANG Tian-tian, ZHOU Chun-ze.(179)

CASE REPORTS

Multicentric Plasma Cell Type Castleman's Disease in A Child: A Case ReportHUANG Ke-feng, JIN Wen-yi, ZHOU Yi, et al.(182)
 Imaging Findings and Literature Review of Retroperitoneal Liposarcoma Mainly Characterized by CalcificationLENG Yuan-yuan, HUANG Yan-tao, LV Min-li, et al.(183)
 CT and MRI Diagnosis of Pelvic Giant Schwannoma: A Case ReportZENG Sheng-xiong, WANG Lei, LI Yong.(185)
 Multiple Retroperitoneal Leiomyoma with Vitreous Degeneration: One Case ReportZHOU Gang, YANG Li, HUANG Shui-xian, et al.(187)

"*" represents the fund article

Since October 2020, the editorial office officially launched the online procurement and editing system. The authors' online investment steps are as follow: (1) to visit www.diagnochina.com and click. (2) Fill in the registration information and obtain the user name and password. (3) Login and check the submission instructions, template and copyright, and submit your paper according to the guidelines.



中国科技核心期刊

(中国科技论文统计源期刊)

收录证书

CERTIFICATE OF SOURCE JOURNAL

FOR CHINESE SCIENTIFIC AND TECHNICAL PAPERS AND CITATIONS

中国CT和MRI杂志

经过多项学术指标综合评定及同行专家
评议推荐，贵刊被收录为“中国科技核心期
刊”（中国科技论文统计源期刊）。

特颁发此证书。



中国科学技术信息研究所
Institute of Scientific and Technical Information of China

北京复兴路 15 号 100038 www.istic.ac.cn

2023年9月

证书编号: 2022-G546-1216
有效期至: 2024年12月

万方数据

