



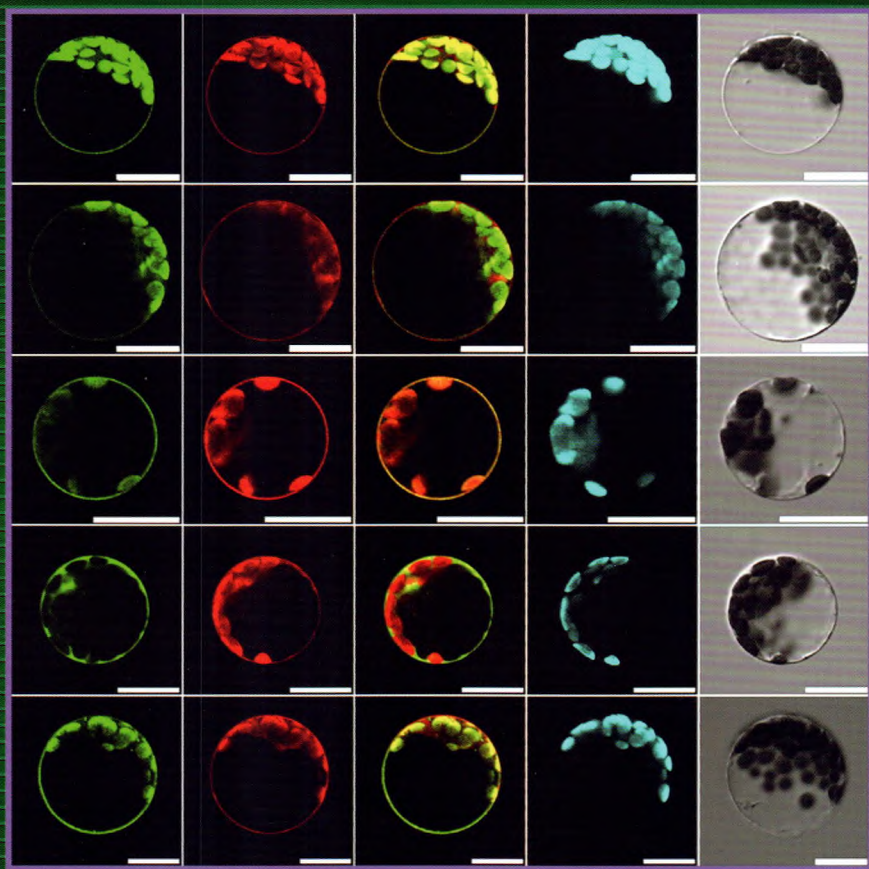
全国中文核心期刊  
CSCD 核心库期刊

ISSN 1007-4333  
CODEN ZNDXAA



# 中国农业大学学报

**JOURNAL OF CHINA  
AGRICULTURAL  
UNIVERSITY**



拟南芥类受体蛋白激酶的激酶域信号传导强度研究  
DOI:10.11841/j.issn.1007-4333.2017.12.05

Vol. 22 No. **12** 2017

# 目 次

气候变化对河北低平原冬小麦需水量及水分生态适应性的影响  
..... 杜玲 徐长春 尹小刚 逄晋松 陈阜(1)

氮肥对糜子籽粒灌浆期农田小气候及产量的调控效应  
..... 宫香伟 韩浩坤 张大众 李境 王孟 薛志和 高小丽 杨璞 冯佰利(10)

施氮时期对糜子产量和氮素利用效率的影响  
..... 王君杰 曹晓宁 王海岗 陈凌 刘思辰 田翔 秦慧彬 杨光宗 乔治军(20)

不同种植方式对糜子干物质积累及产量的影响  
..... 宋艳丽 张东旗 赵涛 王睿豪 黄贵斌 梁鸡保 高小丽(26)

拟南芥类受体蛋白激酶的激酶域信号传导强度研究  
..... 李叶 廖丽丽 许婷 张怀渝 郭晋雅(35)

菊花侧枝形成与调控研究进展 ..... 温超 刘美娟 施敬恬 马男 赵梁军(45)

芍药内外花瓣发育形成相关基因片段的生物信息学及组织表达分析  
..... 吴彦庆 汤寓涵 赵大球 陶俊(53)

枸杞苯丙氨酸解氨酶基因的克隆与表达分析 ..... 乔枫 耿贵工 张丽 金兰 陈志(64)

延边州水资源生态足迹与承载力动态研究 ..... 赵静 王颖 赵春子 金明姬(74)

塔里木盆地北缘绿洲不同土地利用方式土壤有机碳、无机碳变化及其土壤影响因子  
..... 贡璐 罗艳 解丽娜(83)

梅花鹿 Ghrelin 全长 cDNA 克隆及其序列分析  
..... 张曼 金鑫 田巧珍 刘骄 王云鹤 杨银凤(95)

不同 NFC/NDF 水平饲粮对肉公犍牛生长性能和屠宰性能的影响  
..... 李岚捷 王安思 廉红霞 付彤 王之宝 刁其玉 屠焰 成述儒(101)

抗菌抗病毒杂合肽 M-L 发酵液的抑菌谱及生物稳定性研究  
..... 胡庆勇 卫旭彪 张璐璐 斯大勇 张日俊(110)

烹调方式对菠菜、芥蓝中维生素 C、维生素 K <sub>1</sub> 和类胡萝卜素的影响 .....	兰晓芳 王璐 范志红(117)
通风方式对厨余垃圾堆肥 H <sub>2</sub> S 和 NH <sub>3</sub> 排放的影响 .....	张红玉 王桂琴 顾军 李国学(124)
基于四旋翼无人机快速获取大田植株图像的方法及其应用 .....	李晓鹏 胡鹏程 徐照丽 晋艳 杨宇虹 郑邦友 段涛 郭焱(131)
集条残膜打包机压包成型系统设计.....	赫鹏亮 纪超 郑炫 赵岩(138)
苦荞麦非热脱壳机试验研制.....	朱新华 范维果 李泽 郭文川(146)
基于三维点云的苹果树冠层光照分布模型研究 .....	廖崑 郑立华 李民赞 孙红 杨玮(156)
政策性农业保险对农业生产水平影响效应的实证研究 ——基于全国 31 个省份面板数据分位数回归 .....	代宁 陶建平(163)
海峡两岸水产品对东盟市场出口增长的影响因素及合作对策 .....	郑思宁 黄祖辉 郑逸芳(174)
生物质能秸秆回收物流成本分析及测算.....	张茜 李洋 王磊明(185)
超市认证可追溯食品经营意愿影响因素的实证分析.....	陈雨生 张瑛 李中东(194)
我国油菜产业现状、发展困境及建议 .....	刘成 黄杰 冷博峰 冯中朝 李俊鹏(203)
基于知识图谱和 PSR 框架的北京区域土壤重金属研究现状分析 .....	祁豪荣 孙强强 刘明 孙丹峰(211)

(卷终)

## CONTENTS

- Impact of climate change on crop evapotranspiration and water ecological adaptability of winter wheat in Hebei lowland plain ..... *DU Ling, XU Changchun, YIN Xiaogang, TI Jinsong, CHEN Fu* (1)
- Effects of nitrogen fertilizers on the field microclimate and yield of broomcorn millet at grain filling stage ..... *GONG Xiangwei, HAN Haokun, ZHANG Dazhong, LI Jing, WANG Meng, XUE Zhihe, GAO Xiaoli, YANG Pu, FENG Baili* (10)
- Effects of nitrogen application stage on the yield and nitrogen use efficiency of broomcorn millet ..... *WANG Junjie, CHAO Xiaoning, WANG Haigang, CHEN Ling, LIU Sichen, TIAN Xiang, QIN Huibin, YANG Guangzong, QIAO Zhijun* (20)
- Effects of different planting patterns on the dry matter accumulation and yield of broomcorn millet ..... *SONG Yanli, ZHANG Dongqi, ZHAO Tao, WANG Ruihao, HUANG Guibin, LIANG Jibao, GAO Xiaoli* (26)
- Different kinase domains of *Arabidopsis* receptor like protein kinases generate various signaling output profile ..... *LI Ye, LIAO Lili, XU Ting, ZHANG Huaiyu, GUO Jinya* (35)
- Research progress on the formation and regulation of shoot branching in chrysanthemum ..... *WEN Chao, LIU Meijuan, SHI Jingtian, MA Nan, ZHAO Liangjun* (45)
- Bioinformatics and tissue expression analysis of genes affecting the formation and development of inner/outer petal in *Paeonia lactiflora* ..... *WU Yanqing, TANG Yuhan, ZHAO Daqiu, TAO Jun* (53)
- Molecular cloning and expression patterns of *LcPAL* from *Lycium chinense* ..... *QIAO Feng, GENG Guigong, ZHANG Li, JIN Lan, CHEN Zhi* (64)
- Dynamic research on the ecological footprint and load-carrying capacity of water resources in Yanbian area ..... *ZHAO Jing, WANG Ying, ZHAO Chunzi, JIN Mingji* (74)
- Changes in SOC and SIC concentration with land uses and their soil influencing factors in northern marginal zones of Tarim Basin ..... *GONG Lu, LUO Yan, XIE Lina* (83)
- Full-length cDNA sequences cloning and analysis of Ghrel in *Cervus nippon* ..... *ZHANG Man, JIN Xin, TIAN Qiaozhen, LIU Jiao, WANG Yunhe, YANG Yin-feng* (95)
- Effects of diets with different NFC/NDF levels on the growth performance and slaughter performance of meat calves ..... *LI Lanjie, WANG Ansi, LIAN Hongxia, FU Tong, WANG Zhibao, DIAO Qiyu, TU Yan, CHENG Shuru* (101)
- Antibacterial spectrum and stability of the fermentation broth of hybrid antimicrobial and antiviral peptide M-L ..... *HU Qingyong, WEI Xubiao, ZHANG Lulu, SI Dayong, ZHANG Rijun* (110)

- Effects of different cooking methods on ascorbic acid, vitamin K<sub>1</sub> and carotenoid in spinach and Chinese kale ..... LAN Xiaofang, WANG Lu, FAN Zhihong (117)
- Effect of ventilation mode on H<sub>2</sub>S and NH<sub>3</sub> emissions during kitchen waste composting ..... ZHANG Hongyu, WANG Guiqin, GU Jun, LI Guoxue (124)
- Method for rapidly acquiring images of field-grown crops using a quad-rotor UAV and its application ..... LI Xiaopeng, HU Pengcheng, XU Zhaoli, JIN Yan, YANG Yuhong, ZHENG Bangyou, DUAN Tao, GUO Yan (131)
- Design of a compression molding system for residual plastic film strip baler ..... HE Pengliang, JI Chao, ZHENG Xuan, ZHAO Yan (138)
- Test and development of an non-thermal tartary buckwheat huller ..... ZHU Xinhua, FAN Weiguo, LI Ze, GUO Wenchuan (146)
- Canopy light distribution modeling for apple trees based on the 3D point cloud ..... LIAO Wei, ZHENG Lihua, LI Minzan, SUN Hong, YANG Wei (156)
- An empirical study on the effect of policy-supported agricultural insurance on agricultural production: Based on quantile regression of panel data of 31 provinces in China ..... DAI Ning, TAO Jianping (163)
- Analysis of effectors on aquatic product exportation change from Chinese mainland and Taiwan area to ASEAN and the cooperative game ..... ZHENG Sining, HUANG Zuhui, ZHENG Yifang (174)
- Analysis and calculation of the recycling logistics cost of biomass straw ..... ZHANG Xi, LI Yang, WANG Leiming (185)
- An empirical analysis on the factors affecting supermarkets' operating intention of certified traceability food ..... CHEN Yusheng, ZHANG Ying, LI Zhongdong (194)
- Current situation, development difficulties and suggestions of Chinese rape industry ..... LIU Cheng, HUANG Jie, LENG Bofeng, FENG Zhongchao, LI Junpeng (203)
- The current status of the soil heavy metals research in Beijing based on mapping knowledge domain and PSR framework ..... QI Haorong, SUN Qiangqiang, LIU Ming, SUN Danfeng (211)

(Volume end)

中国农业大学学报  
Zhongguo Nongye Daxue Xuebao

(月刊, 1996年创刊)

第22卷 第12期 2017年12月 (卷终)

主管单位 中华人民共和国教育部  
主办单位 中国农业大学  
主 编 李保国  
副 主 编 袁文业  
编辑出版 《中国农业大学学报》编辑部  
100193 北京海淀区圆明园西路2号  
010-6273 2619

印 刷 北京科信印刷有限公司  
国内发行 《中国农业大学学报》编辑部  
国外发行 中国国际图书贸易总公司  
(北京399信箱)

JOURNAL OF CHINA  
AGRICULTURAL UNIVERSITY

(Monthly, Started in 1996)

Vol. 22 No. 12 Dec. 2017 (The end)

**Responsible Institution** Ministry of Education of P. R. C.  
**Sponsored by** China Agricultural University  
**Editor-in-chief** LI Baoguo  
**Edited, Published and Distributed by** Editorial Board of  
Journal of China Agricultural University  
**Address** No. 2 Yuanmingyuan Xilu, Beijing 100193, China  
**Abroad Distributed by** China International Book  
Trading Corporation, P. O. Box 399, Beijing, China  
**Telephone** +86-10-6273 2619  
**E-mail** xuebao@cau.edu.cn  
**http://zgnydxxb.ijournals.cn/ch/index.aspx**

刊号 ISSN 1007 - 4333  
CN 11 - 3837/S

国内定价 30.00元/期  
360.00元/年

ISSN 1007-4333



9 771007 433177