

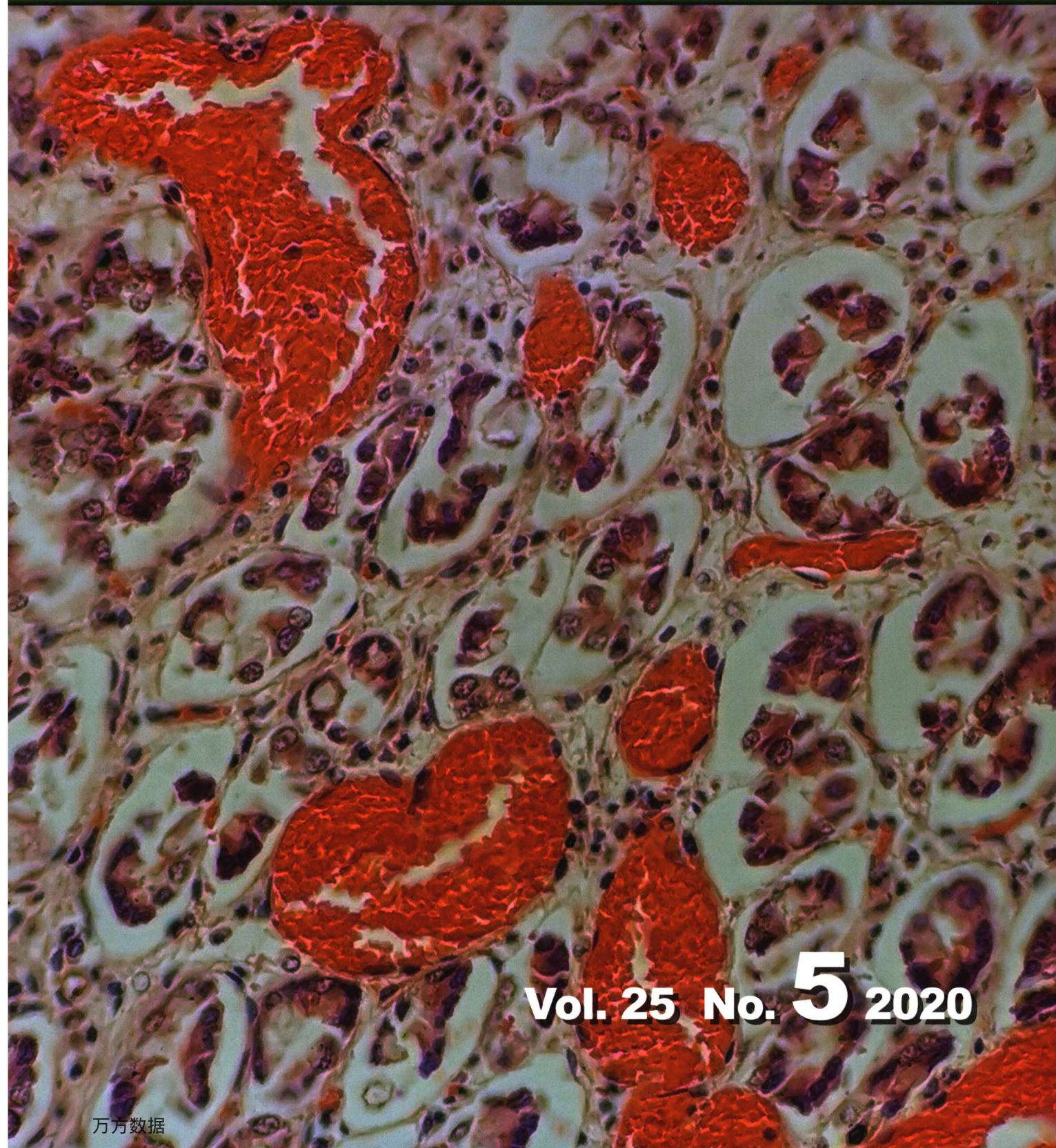


全国中文核心期刊
CSCD核心库期刊

ISSN **QK2022100**
CODEN ZNDXAA

中国农业大学学报

JOURNAL OF CHINA AGRICULTURAL UNIVERSITY



Vol. 25 No. **5** 2020

目 次

免耕与秸秆还田对中国农田固碳和作物产量的影响	张雄智 李帅帅 刘冰洋 张云 Ahmad Latif Virk 王兴 赵鑫 张海林(1)
木薯不同品种朱砂叶螨抗性与其叶片内含物的关系	韦婉玲 罗兴录 潘晓璐 吴美艳 刘珊廷 樊吴静(13)
中国畜禽粪便管理政策现状和前景述评	何思洋 李蒙 傅童成 包维卿 刘梦莹 谢光辉(22)
有机肥施用量和树龄差异对苹果园土壤真菌群落的影响	柴小粉 杨雅菲 张杰 韩振海 许雪峰 张新忠 吴婷 王忆(38)
果园秸秆覆盖机抛土轮设计与试验	臧家俊 朱新华 徐少杰(47)
甘薯块根贮藏期间细胞壁成分及降解酶活性变化	曹如霞 徐舒 李玲 陈玲玲 陆国权(59)
不同氮水平下毛华菊形态性状的差异分析	张秋玲 杨秀珍 戴思兰 邱丹丹 董南希 李清清(70)
不同蛋白质水平代乳粉对牦犊牛体重及血清生化指标的影响	鲍宇红 宋天增 冯柯 张卫兵 参木友(78)
一例湖羊纤维素性肺炎的病理组织学观察	张桦 魏勇 王利(86)
基于高光谱成像技术的羊肉新鲜度预测	张珏 田海清 王轲 张丽娜 于洋(94)
粗毛纤孔菌总三萜的纯化及对胆酸盐结合能力分析	刘爽爽 刘东超 孙凡越 李德海 王占斌(104)
基于现货实时平衡的新能源微电网调峰激励机制	马喜平 沈渭程 杨臣 杜松怀 苏娟 赵凤展 董彦君(114)
接种外源微生物对堆肥中重金属铜锌铅形态变化的影响	郝丽娜 常瑞雪 李彦明 汪杰 陈清 赵恒宇(122)

红壤和潮土添加不同生物质炭后等温吸附磷酸盐的变化	朱晓亚 王翔翼 赵小蓉 林启美 李贵桐(130)
基于生态安全的空间冲突测度与影响因素研究	
——以昆明市为例	陈士梅 艾东 付野(141)
基于渠系输水模拟与土壤水量平衡模拟的两级渠系优化配水模型	
.....	潘琦 夏爽 郭珊珊 单宝英 郭萍(151)
资源型城市城镇化发展对我国城镇化水平的贡献性	吴静 白中科 曹银贵 张雷(163)
城镇化会加剧化肥面源污染吗	
——基于门槛效应与空间溢出的双重视角	栾健 韩一军(174)
贸易引力、社会环境与中国羊毛进口贸易效率	
——基于随机前沿引力模型的分析	刘琮 肖海峰(187)
基于能值分析京郊蔬菜不同生产经营方式的生态经济可持续性评价	
.....	赵琳琪 陈源泉(198)
价格与替代效应对农业生产中化肥施用的影响	
——以玉米和圆白菜为例	尹峻 党敬淇 孙小霞(209)

CONTENTS

- Effects of no-till and residue retention on carbon sequestration and yield in China
..... ZHANG Xiongzhi, LI Shuaishuai, LIU Bingyang, ZHANG Yun,
Ahmad Latif Virk, WANG Xing, ZHAO Xin, ZHANG Hailin(1)
- Relationship between resistances of different cassava varieties to *Tetranychus cinnabarinus*
and their leaves content WEI Wanling, LUO Xinglu, PAN Xiaolu,
WU Meiyang, LIU Shanting, FAN Wujing(13)
- An overview of current situation and prospects on livestock excrement management
policies in China HE Siyang, LI Meng, FU Tongcheng,
BAO Weiqing, LIU Mengying, XIE Guanghui(22)
- Soil fungal community in apple orchards relative to manure application and cultivation history
..... CHAI Xiaofen, YANG Yafei, ZHANG Jie, HAN Zhenhai,
XU Xuefeng, ZHANG Xinzhong, WU Ting, WANG Yi(38)
- Design and test of soil throwing wheel of orchard straw mulching machine
..... ZANG Jiajun, ZHU Xinhua, XU Shaojie(47)
- Changes of cell wall components and degradation enzyme activity in sweetpotato storage roots
during storage CAO Ruxia, XU Shu, LI Ling, CHEN Lingling, LU Guoquan(59)
- Difference analysis of morphological traits of *Chrysanthemum vestitum* under different
nitrogen levels ZHANG Qiuling, YANG Xiuzhen, DAI Silan, QIU Dandan,
DONG Nanxi, LI Qingqing(70)
- Effects of different protein levels of milk replacer on the body weight and serum
biochemical indexes of yak calves BAO Yuhong, SONG Tianzeng, FENG Ke,
ZHANG Weibing, Canmuyou(78)
- Histopathological observation of fibrinous pneumonia in Hu sheep
..... ZHANG Hua, WEI Yong, WANG Li(86)
- Nondestructive detection of lamb freshness based on hyperspectral imaging technology
..... ZHANG Jue, TIAN Haiqing, WANG Ke, ZHANG Lina, YU Yang(94)
- Purification of total triterpenoids from *Inonotus hispidus* and analysis on bile salt binding ability
..... LIU Shuangshuang, LIU Dongchao, SUN Fanyue, LI Dehai, WANG Zhanbin(104)

- Peak shaving incentive mechanism of new energy microgrid based on spot real-time balance
 *MA Xiping, SHEN Weicheng, YANG Chen, DU Songhuai, SU Juan, ZHAO Fengzhan, DONG Yanjun*(114)
- Effects of exogenous inoculums on the fractions variation of heavy metals copper, zinc and lead in compost *HAO Lina, CHANG Ruixue, LI Yanming, WANG Jie, CHEN Qing, ZHAO Hengyu*(122)
- Changes in isothermal phosphate adsorption in red soils and alluvial soils added with different biochars *ZHU Xiaoya, WANG Xiangyi, ZHAO Xiaorong, LIN Qimei, LI Guitong*(130)
- Spatial conflict measurement and influencing factors based on ecological security:
 A case study of Kunming City *CHEN Shimei, AI Dong, FU Ye*(141)
- Irrigation water optimal allocation for two-level canals based on canal water transfer simulation and soil water balance simulation
 *PAN Qi, XIA Shuang, GUO Shanshan, SHAN Baoying, GUO Ping*(151)
- Contribution of resource-based city urbanization to China's urbanization
 *WU Jing, BAI Zhongke, CAO Yingui, ZHANG Lei*(163)
- Does urbanization intensify chemical fertilizer non-point source pollution:
 Based on threshold effects and spatial spillovers *LUAN Jian, HAN Yijun*(174)
- Trade attraction, social environment and efficiency of China's wool import trade:
 Analysis based on stochastic frontier gravitation model
 *LIU Qiong, XIAO Haifeng*(187)
- Sustainability evaluation of different production and management patterns of vegetables in Beijing suburbs based on energy and economic analysis
 *ZHAO Linqi, CHEN Yuanquan*(198)
- Effect of price and substitution on fertilizer use in agricultural production:
 An empirical analysis of corn and cabbage
 *YIN Jun, DANG Jingqi, SUN Xiaoxia*(209)

官方网站



中国农业大学学报
Zhongguo Nongye Daxue Xuebao

(月刊, 1996年创刊)

第25卷 第5期 2020年5月

主管单位 中华人民共和国教育部

主办单位 中国农业大学

主 编 李保国

副 主 编 袁文业

编辑出版 《中国农业大学学报》编辑部
100193 北京海淀区圆明园西路2号
010-6273 2619

印 刷 北京科信印刷有限公司

国内发行 《中国农业大学学报》编辑部

国外发行 中国国际图书贸易总公司
(北京399信箱)

JOURNAL OF CHINA
AGRICULTURAL UNIVERSITY

(Monthly, Started in 1996)

Vol. 25 No. 5 May 2020

Responsible Institution Ministry of Education of P. R. C.

Sponsored by China Agricultural University

Editor-in-chief LI Baoguo

Edited, Published and Distributed by Editorial Board of
Journal of China Agricultural University

Address No. 2 Yuanmingyuan Xilu, Beijing 100193, China

Abroad Distributed by China International Book

Trading Corporation, P. O. Box 399, Beijing, China

Telephone +86-10-6273 2619

E-mail xuebao@cau.edu.cn **http:** //zgnydxxb.ijournals.cn

刊号 ISSN 1007 - 4333
CN 11 - 3837/S

国内定价 30.00元/期
360.00元/年

ISSN 1007-4333



9 771007 433207