

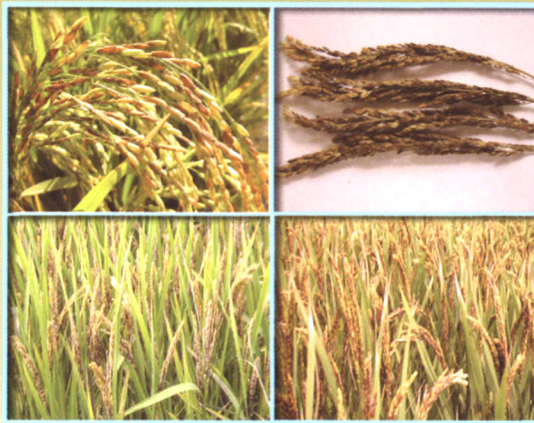


ISSN 1001-7216  
CODEN ZSKHBX

2012年5月 第26卷 第3期 Vol. 26 No. 3

# 中国水稻科学

CHINESE JOURNAL OF RICE SCIENCE



中国水稻研究所 主办

水稻生物学国家重点实验室 协办

Sponsored by the China National Rice Research Institute  
in cooperation with the State Key Laboratory of Rice Biology



万方数据

## 目次

### 研究报告

- 水稻光敏色素相互作用因子基因 *OsPIL1* 的表达模式及其在光信号传导中作用的初步分析 255  
梁卫红 李莉 彭威风 刘婧 杨慧 谢先芝
- 水稻(脱氧)胞苷酸脱氨酶基因的表达特性分析 261  
王学军 康厚祥 刘忠松 王国梁
- 养分胁迫对水稻籽粒灌浆充实影响的蛋白质组学研究 267  
邵彩虹 钱银飞 唐秀英 刘光荣 谢金水 彭春瑞 邱才飞
- 低氮胁迫下水稻剑叶转录因子表达变化 275  
赵明辉 马殿荣 王嘉宇 徐海 唐亮 陈温福
- 基于3种遗传统计模型对粳稻米质性状的 QTL 分析 283  
刘强明 江建华 牛付安 赫英俊 洪德林
- 超级杂交稻协优 9308 重组自交系主茎叶片数的动态 QTL 分析 291  
戴高兴 杨占烈 邓国富 张迎信 王会民 翟荣荣 曹立勇 程式华
- 水稻淡褐斑叶突变体 *lbs1* 的遗传分析与基因定位 297  
李保华 杨杨 施勇烽 林璐 陈洁 黄奇娜 魏彦林 Hei LEUNG 吴建利
- 超级稻花后强、弱勢粒淀粉合成相关酶活性和激素含量变化及其与籽粒灌浆的关系 302  
付景 徐云姬 陈露 袁莉民 王志琴 杨建昌
- 抛秧立苗对水稻光合特性和物质生产的影响 311  
郭保卫 张洪程 张春华 陈厚存 许轲 周兴涛 张军 陈京都 魏海燕 戴其根  
霍中洋 朱聪聪 邢琳 黄幸福
- 增氧对水稻根系生长与氮代谢的影响 320  
徐春梅 王丹英 陈松 陈丽萍 章秀福
- 高原粳稻抗倒性与农艺性状及亲本抗倒性的关系 325  
丁明亮 苏振喜 邹苗 朱振华 袁平荣 陈于敏 刘慰华 陆树刚 戴陆园
- 不同氮素吸收类型粳稻品种吸氮能力的差异及原因分析 331  
于小凤 王坚纲 李进前 王熠 袁秋梅 仲军 陈琛 田昊 张燕 黄建晔 王余龙 董桂春
- 水稻穗腐病原分离、鉴定及生物学特性 341  
黄世文 王玲 刘连盟 刘恩勇 侯恩庆 肖丹凤 范钰岚

### 研究简报

- 两个环境下糙米和精米蛋白质含量的 QTL 分析 351  
杨亚春 倪大虎 宋丰顺 李莉 冯光 李泽福 杨剑波
- 稻曲病菌休眠与非休眠厚垣孢子胞壁多糖结构与组分 356  
王娜 任佐华 邓林伟 陈娟芳 刘二明
- 亚致死剂量吡虫啉和吡蚜酮对褐飞虱生物适合度的影响 361  
刘淑华 杨保军 刘双 丁志平 刘译文 唐健

### 综述

- 水稻吸收、运输锌及其籽粒富集锌的机制 365  
虞银江 廖海兵 陈文荣 田生科 杨肖娥
- 水稻抽穗期遗传与分子调控机理研究进展 373  
胡时开 苏岩 叶卫军 郭龙彪

# CHINESE JOURNAL OF RICE SCIENCE (Bimonthly)

Volume 26, Number 3, May 2012

http://www.ricesci.cn; E-mail: cjrs@263.net

## CONTENTS

### Research Papers

Expression Patterns of <i>OsPIL11</i> , a Phytochrome-interacting Factor in Rice, and Preliminary Analysis of Its Roles in Light Signal Transduction	255
LIANG Wei-hong, LI Li, PENG Wei-feng, LIU Jing, YANG Hui, XIE Xian-zhi	
Expression Analysis of Genes Encoding Deoxycytidine/Cytidine Deaminases in Rice	261
WANG Xue-jun, KANG Hou-xiang, LIU Zhong-song, WANG Guo-liang	
Proteomics Analysis of Nutrient Deficiency Effect on Rice Grain Filling	267
SHAO Cai-hong, QIAN Yin-fei, TANG Xiu-ying, LIU Guang-rong, XIE Jin-shui, PENG Chun-rui, QIU Cai-fei	
Expression of Transcription Factors of Rice Flag Leaf under Low Nitrogen Stress	275
ZHAO Ming-hui, MA Dian-rong, WANG Jia-yu, XU Hai, TANG Liang, CHEN Wen-fu	
QTL Analysis for Seven Quality Traits of japonica Rice Based on Three Genetic Statistical Models	283
LIU Qiang-ming, JIANG Jian-hua, NIU Fu-an, HE Ying-jun, HONG De-lin	
QTL Analysis for Leaf Number on Main Stem in RILs of Super Hybrid Rice Xieyou 9308	291
DAI Gao-xing, YANG Zhan-lie, DENG Guo-fu, ZHANG Ying-xin, WANG Hui-min, ZHAI Rong-rong, CAO Li-yong, CHENG Shi-hua	
Genetic Analysis and Gene Mapping of a Light Brown Spotted Leaf Mutant in Rice	297
FENG Bao-hua, YANG Yang, SHI Yong-feng, LIN Lu, CHEN Jie, HUANG Qi-na, WEI Yan-lin, HEI LEUNG, WU Jian-li	
Post-anthesis Changes in Activities of Enzymes Related to Starch Synthesis and Contents of Hormones in Superior and Inferior Spikelets and Their Relation with Grain Filling of Super Rice	302
FU Jing, XU Yun-ji, CHEN Lu, YUAN Li-min, WANG Zhi-qin, YANG Jian-chang	
Effect of Seedling Standing and Establishment on Photosynthetic Characteristics and Matter Production of Broadcasted Rice	311
GUO Bao-wei, ZHANG Hong-cheng, ZHANG Chun-hua, CHEN Hou-cun, XU Ke, ZHOU Xing-tao, ZHANG Jun, CHEN Jing-du, WEI Hai-yan, DAI Qi-gen, HUO Zhong-yang, ZHU Cong-cong, XING Lin, HUANG Xing-fu	
Effect of Aeration on Root Growth and Nitrogen Metabolism in Rice	320
XU Chun-mei, WANG Dan-ying, CHEN Song, CHEN Li-ping, ZHANG Xiu-fu	
Relationship Between Lodging Resistance and Either Agronomic Traits or Parents' Lodging Resistance in Plateau japonica Rice	325
DING Ming-liang, SU Zhen-xi, ZOU Qian, ZHU Zhen-hua, YUAN Ping-rong, CHEN Yu-min, LIU Wei-hua, LU Shu-gang, DAI Lu-yuan	
Difference in Nitrogen Absorption Ability and Its Reason in Conventional japonica Rice Cultivars with Different Nitrogen Uptake Efficiencies	331
YU Xiao-feng, WANG Jian-gang, LI Jin-qian, WANG Yi, YUAN Qiu-mei, ZHONG Jun, CHEN Chen, TIAN Hao, ZHANG Yan, HUANG Jian-ye, WANG Yu-long, DONG Gui-chun	
Isolation, Identification and Biological Characters of Pathogens of Rice Spikelet Rot Disease	341
HUANG Shi-wen, WANG Ling, LIU Lian-meng, LIU En-yong, HOU En-qing, XIAO Dan-feng, FAN Zeng-lan	
<b>Short Communications</b>	
Identification of QTL for Protein Content in Brown and Milled Rice in Two Environments	351
YANG Ya-chun, NI Da-hu, SONG Feng-shun, LI Li, FENG Guang, LI Ze-fu, YANG Jian-bo	
Structure and Composition of Polysaccharide from Chlamyospore Wall in <i>Ustiloginoidea virescens</i>	356
WANG Na, REN Zuo-hua, DENG Lin-wei, CHEN Juan-fang, LIU Er-ming	
Effects of Sublethal Dose of Imidacloprid and Pymetrozine on Relative Biological Fitness of Brown Planthopper, <i>Nilaparvata lugens</i>	361
LIU Shu-hua, YANG Bao-jun, LIU Shuang, DING Zhi-ping, LIU Ze-wen, TANG Jian	
<b>Reviews</b>	
Mechanism of Zn Uptake, Translocation in Rice Plant and Zn-enrichment in Rice Grain	365
YU Yin-jiang, LIAO Hai-bing, CHEN Wen-rong, TIAN Sheng-ke, YANG Xiao-e	
Advances in Genetic Analysis and Molecular Regulation Mechanism of Heading Date in Rice ( <i>Oryza sativa</i> L.)	373
HU Shi-kai, SU Yan, YE Wei-jun, GUO Long-biao	

CN 33-1146/S

邮发代号:32-94

国外代号:Q6533

定 20.00元(全年 120.00元)