

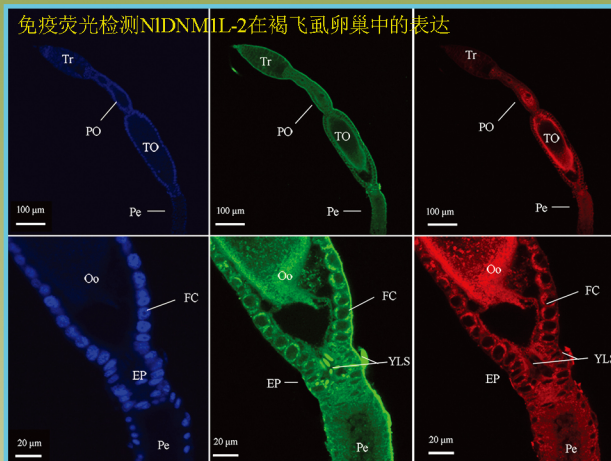


ISSN 1001-7216
CODEN ZSKHBX

2017年7月 第31卷 第4期 Vol. 31 No.4

中国水稻科学

CHINESE JOURNAL OF RICE SCIENCE



中国水稻研究所 主办

水稻生物学国家重点实验室 协办

Sponsored by the China National Rice Research Institute
in Cooperation with the State Key Laboratory of Rice Biology

ISSN 1001-7216



9 771001-721133

万方数据

目 次

研究报告

- 水稻抗稻瘟病突变体 *lmm326* 的鉴定与调控通路初步分析 335
徐婷婷 余宁 张迎信 毕真真 吴玮勋 曹永润 王备芳 张越 轩丹丹 陈代波 占小登 程式华
曹立勇
- 褐飞虱两个 *dynammin-1-like* 基因的克隆、多克隆抗体制备及表达定位 345
赵晨星 俞叶微 许益鹏 俞晓平
- 水稻白条纹突变体 *st13* 的表型分析及基因定位 355
孙立亭 林添资 王云龙 牛梅 胡婷婷 刘世家 王益华 万建民
- 基于重测序的染色体片段代换系定位水稻抽穗期 QTL 364
王军 朱金燕 陶亚军 周勇 范方军 李文奇 王芳权 仲维功 杨杰 梁国华
- 聚合水稻温敏核不育基因和反温敏核不育基因创制永久核不育系 371
江建华 倪金龙 吴爽 王德正
- 干湿交替灌溉对抗旱性不同水稻品种产量的影响及其生理原因分析 379
卞金龙 蒋玉兰 刘艳阳 冯咏芳 刘贺 夏仕明 刘立军
- 氮素穗肥运筹对两个杂交中籼稻叶片形态、光合生产及产量的影响 391
秦俭 杨志远 孙永健 徐徽 吕腾飞 代邹 郑家奎 蒋开锋 马均
- 淮北地区氮高效高产型粳稻品种群体生长特征研究 400
梁健 赵晨 韩超 任红茹 陈梦云 张洪程 霍中洋
- 水稻苗期根系铵钾离子吸收的交互作用研究 409
燕金香 李福明 褚光 徐春梅 陈松 章秀福 王丹英
- 脲酶抑制剂与硝化抑制剂对稻田土壤氮素转化的影响 417
张文学 杨成春 王少先 孙刚 刘增兵 李祖章 刘光荣
- 镉胁迫对不同水稻品种种子萌发特性的影响 425
孙亚莉 刘红梅 徐庆国
- 水稻干尖线虫的环介导恒温扩增技术(LAMP)快速检测方法 432
白宗师 秦萌 赵立荣 韩玉春 王东伟 徐春玲 谢辉
- 超级早稻中早 39 稻瘟病抗性的系谱分析 441
梁燕 季芝娟 曾宇翔 张翠真 吴晗霖 杨长登

CHINESE JOURNAL OF RICE SCIENCE(Bimonthly)

Volume 31, Number 4, July 2017

<http://www.ricesci.cn>; E-mail: cjrs@263.net

CONTENTS

Research Papers

- Identification of Rice Blast Resistance Mutant *Imm326* and Preliminary Analysis of Its Regulatory Pathway 335
XU Tingting, YU Ning, ZHANG Yingxin, BI Zhenzhen, WU Weixun, CAO Yongrun, WANG Beifang,
ZHANG Yue, XUAN Dandan, CHEN Daibo, ZHAN Xiaodeng, CHENG Shihua, CAO Liyong
- Gene Cloning, Polyclonal Antibody Preparation and Expression Localization of Two *dynammin-1-like* Genes from 345
Nilaparvata lugens (Hemiptera: Delphacidae)
ZHAO Chenxing, YU Yewei, XU Yipeng, YU Xiaoping
- Phenotypic Analysis and Gene Mapping of a White Stripe Mutant *st13* in Rice 355
SUN Liting, LIN Tianzi, WANG Yunlong, NIU Mei, HU Tingting, LIU Shijia, WANG Yihua,
WAN Jianmin
- Mapping of QTLs for Heading Date Using Whole-genome Re-sequenced Chromosome Segment Substitution 364
Lines in Rice
WANG Jun, ZHU Jinyan, TAO Yajun, ZHOU Yong, FAN Fangjun, LI Wenqi, WANG Fangquan,
ZHONG Weigong, YANG Jie, LIANG Guohua
- Development of Permanent Genic Male Sterile Line by Pyramiding Thermo-sensitive Genic Male Sterile Genes 371
and Reverse Temperature Induced Genic Male Sterile Genes in Rice (*Oryza sativa* L.)
JIANG Jianhua, NI Jinlong, WU Shuang, WANG Dezheng
- Effects of Alternate Wetting and Drying Irrigation on Grain Yield in Rice Cultivars with Different Drought 379
Resistance and Its Physiological Mechanism
BIAN Jinlong, JIANG Yulan, LIU Yanyang, FENG Yongfang, LIU He, XIA Shiming, LIU Lijun
- Effects of Nitrogen Topdressing for Panicle Initiation on Leaf Morphology, Photosynthetic Production and Grain 391
Yield of Two Middle-season Hybrid Rice Cultivars
QIN Jian, YANG Zhiyuan, SUN Yongjian, XU Hui, LÜ Tengfei, DAI Zou, ZHENG Jiakui,
JIANG Kaifeng, MA Jun
- Characteristics of Population Growth in *japonica* Rice Varieties with High Nitrogen Use Efficiency and High Yield 400
in Huaibei Area
LIANG Jian, ZHAO Chen, HAN Chao, REN Hongru, CHEN Mengyun, ZHANG Hongchen,
HUO Zhongyang
- Study on the Interaction Between Ammonium and Potassium Absorption in Rice Roots at the Seedling Stage 409
YAN Jinxiang, LI Fuming, CHU Guang, XU Chunmei, CHEN Song, ZHANG Xiufu, WANG Danying
- Effects of Urease Inhibitor and Nitrification Inhibitor on Nitrogen Transformation in Paddy Soil 417
ZHANG Wenxue, YANG Chengchun, WANG Shaoxian, SUN Gang, LIU Zengbing, LI Zuzhang,
LIU Guangrong
- Effects of Cadmium Stress on Rice Seed Germination Characteristics 425
SUN Yali, LIU Hongmei, XU Qingguo
- Loop-mediated Isothermal Amplification Assay for Rapid Diagnosis of *Aphelenchoides besseyi* 432
BAI Zongshi, QIN Meng, ZHAO Lirong, HAN Yuchun, WANG Dongwei, XU Chunling, XIE Hui
- Genealogical Analysis of Resistance to *Magnaporthe oryzae* in Super Early Rice Zhongzao 39 441
LIANG Yan, JI Zhijuan, ZENG Yuxiang, ZHANG Cuizhen, WU Hanlin, YANG Changdeng