

ISSN 1005-4847

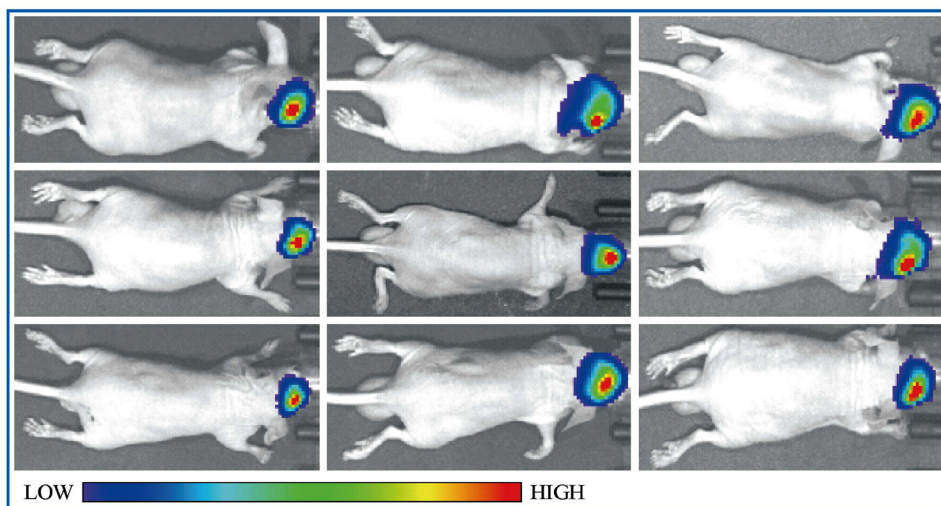
CN 11-2986/Q

ACTA LABORATORIUM  
ANIMALIS SCIENTIA SINICA

# 中国实验动物学报

ZHONGGUO SHIYAN DONGWU XUEBAO

第31卷 第6期 / Vol.31 No.6



刘喜红: miR-328-3p-Akt/mTOR轴在雷公藤甲素抑制脑胶质瘤细胞生长中的作用及机制研究

主办单位:

中国实验动物学会

中国医学科学院医学实验动物研究所

数据库收录:

中国科学引文数据库CSCD

中文核心期刊要目总览(北大图书馆)

中国科技论文统计源期刊

世界卫生组织西太平洋地区医学索引

中国核心期刊(遴选)数据库

中国学术期刊综合评价数据库

中国生物医学文献数据库

万方数据资源系统中国数字化期刊群

ISSN 1005-4847



万方数据

2023

6

# 中国实验动物学报

ACTA LABORATORIUM ANIMALIS SCIENTIA SINICA

月刊 1993年6月创刊

第31卷 第6期 2023年6月30日出版

## 目次

### 研究报告

- miR-328-3p-Akt/mTOR轴在雷公藤甲素抑制脑胶质瘤细胞生长中的作用及机制研究 ..... 刘喜红,杜晓丹,范孟杨,徐柳清,赵培源(697)
- 多种认知障碍的危险因素对高血压大鼠脑组织病理形态和铁含量的影响 ..... 畅苏瑞,刘剑刚,文嘉钰,李浩,董国菊,刘春秋,石玉娇(706)
- 姜黄素联合单胺氧化酶A抑制剂氯吉灵对肺癌细胞增殖的影响 ..... 王荟荟,郭晨博,谭邓旭,张延英,汪永锋,师长宏(715)
- 2型糖尿病气阴两虚证大鼠尿液代谢组学研究 ..... 邱华明,李子祥,金源卿,吴曙光(722)
- 绝经后脂质代谢紊乱诱导小鼠抑郁症状的形成\* ..... 沈皓天,姜俊杰,晁滢,洪敏,郑劫,卞慧敏(733)
- 大鼠肥胖抑郁模型建立及肠道菌群多样性的性别差异研究\* ..... 徐磊,罗小泉,瞿萍,钟毅,张鸿,曾宪保,杨玉艳,刘志勇,洪滔(743)
- 妊娠期高血压疾病对早产大鼠甲状腺形态及功能的影响 ..... 何月,孙毛毛,吴聪榕,于永慧(756)
- 白藜芦醇对大鼠运动性肝损伤的保护作用 ..... 胡戈,马欣雨,秦菲,曹建民,董丽,周海涛,华冰(763)
- 阿片 $\mu$ 受体阻滞剂对习得性无助小鼠运动能力及抑郁、焦虑样行为的影响\* ..... 刘国军,刘阳春,刘志强(770)
- 基于动物模型的药物筛选数据库的建立 ..... 吴玥,王珏,冯婷婷,李依桐,薛婧,郭建国,向志光,何君,王凯,张阳,李璐,高虹,魏强,孔琪(778)

### 研究进展

- 动脉粥样硬化小鼠模型应用进展 ..... 李浩,张琪(787)
- 啮齿类动物情绪传染的研究进展 ..... 刘昊,李文静,王馨媛,王晨琪,吴亚轩,肖洪玲(795)

奖励性操作条件反射实验在学习记忆研究中的应用 .....  
..... 张亦文,姚彩虹,孙欣然,陈善广,刘新民,姜宁(802)

慢性应激诱导动物抑郁样行为机制研究进展\* ..... 陈亚婷,雷梦珠,张波,李传玉(811)

犬咬合力测试方法研究进展 ..... 方伟,陈方园,郑吉龙,叶柳彤,牛承义(820)

皮瓣缺血再灌注损伤大鼠模型的构建及其运用进展 ..... 黄亚伟,徐停伟,张浩(827)

\* 抑郁与行为的机制研究

广告 ..... (封二、内插)

**主管**  
中国科学技术协会

**主办**  
中国实验动物学会  
中国医学科学院医学实验动物研究所

**主编**  
秦川

**编辑**  
《中国实验动物学报》编辑部

**出版**  
《中国实验动物学报》编辑部

**发行**  
《中国实验动物学报》编辑部  
100021,北京市朝阳区潘家园南里5号  
电话:010-67779337  
传真:010-67770690  
E-mail:bjb@cnilas.org  
<http://zgsydw.cnjournals.com/sydwbybjyx/ch/index.aspx>

**本期执行主编** 代解杰  
**本期专题组织** 苑杰  
**本期责任编辑** 陈慧 董令赢

**照排**  
同方知网(北京)技术有限公司

**印刷**  
北京博海升彩色印刷有限公司

**邮发代号**  
2-748

**广告发布登记**  
京朝工商广登字 20170142 号

**定价**  
每期 50.00 元,全年 600.00 元

**中国标准连续出版物号**  
ISSN 1005-4847  
CN 11-2986/Q

**2023 年版权归中国实验动物学会所有**  
本刊已入万方数据网络和中国学术期刊(光盘版)电子杂志、中文生物医学期刊全文数据库、中国实验动物信息网和中国实验动物学会网站等网络文献数据库,如不同意自己论文入网,请在来稿中声明。编辑部支付的稿酬已包含上述网站著作权使用费。  
本刊电子版出版发行合作伙伴:中邮阅读网;[www.183read.com](http://www.183read.com)

期刊基本参数:CN11-2986/Q \* 1993 \* m \* A4 \* 140 \* zh \* P \* ¥ 50.00 \* 1000 \* 16 \* 2023-06

## CONTENTS

- Role and mechanism of miR-328-3p-Akt/mTOR axis in the inhibition of glioma cell growth by triptolide .....  
..... *LIU Xihong, DU Xiaodan, FAN Mengyang, XU Liuqing, ZHAO Peiyuan*(697)
- Risk factors of cognitive impairment influence histopathological morphology and iron content in hypertensive rats  
..... *CHANG Surui, LIU Jiangang, WEN Jiayu, LI Hao, DONG Guoju, LIU Chunqiu, SHI Yujiao*(706)
- Effect of curcumin combined with monoamine oxidase inhibitor clorgyline on lung cancer cell proliferation .....  
... *WANG Huihui, GUO Chenbo, TAN Dengxu, ZHANG Yanying, WANG Yongfeng, SHI Changhong*(715)
- Urine metabonomics in type 2 diabetes rats with qi yin deficiency syndrome .....  
..... *QIU Huaming, LI Zixiang, JIN Yuanqing, WU Shuguang*(722)
- Postmenopausal lipid metabolism disorder induces depressive symptoms in mice .....  
..... *SHEN Haotian, JIANG Junjie, CHAO Ying, HONG Min, ZHENG Jie, BIAN Huimin*(733)
- Establishment of an obesity depression model in rats and study of sex differences in gut flora diversity .....  
..... *XU Lei, LUO Xiaoquan,*  
*QU Ping, ZHONG Yi, ZHANG Hong, ZENG Xianbao, YANG Yuyan, LIU Zhiyong, HONG Tao*(743)
- Effect of hypertensive disorder complicating pregnancy on thyroid morphology and function in preterm rats .....  
..... *HE Yue, SUN Maomao, WU Congrong, YU Yonghui*(756)
- Protective effect of resveratrol on exercise-induced liver injury in rats .....  
..... *HU Ge, MA Xinyu, QIN Fei, CAO Jianmin, DONG Li, ZHOU Haitao, HUA Bing*(763)
- Effects of  $\mu$  opioid receptor blockers on motor ability and depressive and anxiety-like behavior in learned helplessness mice .....  
..... *LIU Guojun, LIU Yangchun, LIU Zhiqiang*(770)
- Construction of a drug screening database based on animal models .....  
..... *WU Yue, WANG Jue, FENG Tingting, LI Yitong, XUE Jing, GUO Jianguo,*

*XIANG Zhiguang, HE Jun, WANG Kai, ZHANG Yang, LI Lu, GAO Hong, WEI Qiang, KONG Qi*(778)

Progress in the application of arteriosclerosis mouse models ..... *LI Hao, ZHANG Qi*(787)

Research progress on rodent emotional contagion .....  
..... *LIU Hao, LI Wenjing, WANG Xinai, WANG Chenqi, WU Yaxuan, XIAO Hongling*(795)

Overview on the application of reward-directed operant conditioning method in the study of learning and memory  
..... *ZHANG Yiwen, YAO Caihong, SUN Xinran, CHEN Shanguang, LIU Xinmin, JIANG Ning*(802)

Research progress on mechanisms underlying chronic-stress-induced depressive-like behavior in animals .....  
..... *CHEN Yating, LEI Mengzhu, ZHANG Bo, LI Chuanyu*(811)

Research progress on methods of bite force testing in canine .....  
..... *FANG Wei, CHEN Fangyuan, ZHENG Jilong, YE Liutong, NIU Chengyi*(820)

Research progress on skin flap models of ischemia-reperfusion injury in rats .....  
..... *HUANG Yawei, XU Tingwei, ZHANG Hao*(827)

---

**Responsible Institution**

China Association for Science and Technology

**Sponsor**

Chinese Association for Laboratory Animal Sciences  
Institute of Laboratory Animal Sciences,  
Chinese Academy of Medical Sciences

**Editor-in-Chief**

QIN Chuan(秦川)

**Editing**

Editorial Office of Acta Laboratorium Animalis Scientia Sinica

**Publishing**

Editorial Office of Acta Laboratorium Animalis Scientia Sinica

**Distributor**

Editorial Office of Acta Laboratorium Animalis Scientia Sinica  
5 Pan Jia Yuan Nan Li, Chaoyang District, Beijing 100021  
Tel: 010-67779337  
Fax: 010-67770690  
E-mail: bjb@cnilas.org  
<http://zgsydw.cnjournals.com/sydwbyjyx/ch/index.aspx>

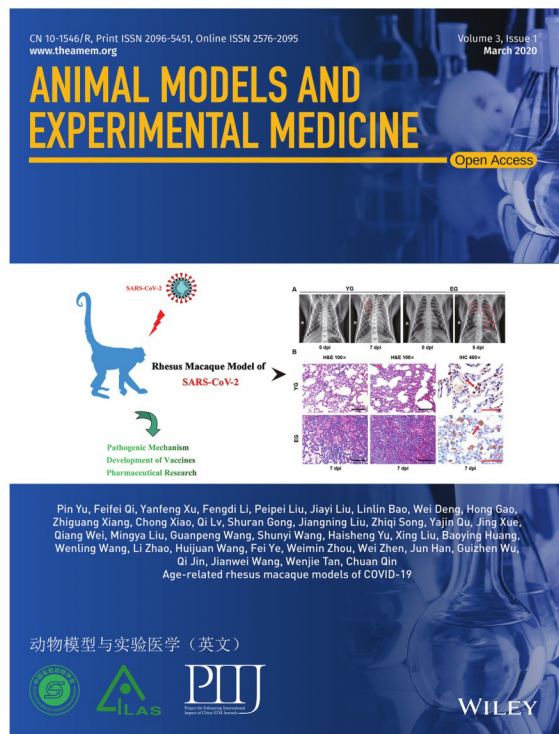
**CSSN**

ISSN 1005-4847  
CN 11-2986/Q

**Copyright 2023 by the Chinese Association for Laboratory Animal Sciences**

# Animal Models and Experimental Medicine

## Call for Papers



### The *AMEM* will publish:

- Reviews
- Commentaries
- Original Research Articles
- Short Communications
- Guidelines and Consensus
- Research Highlights
- Meeting Reports
- Technical Notes
- AFLAS Focus
- Laboratory Animal Welfare and Ethics
- Letters to the Editor

To submit a manuscript to **AMEM**, please visit:  
<https://onlinelibrary.wiley.com/journal/25762095>